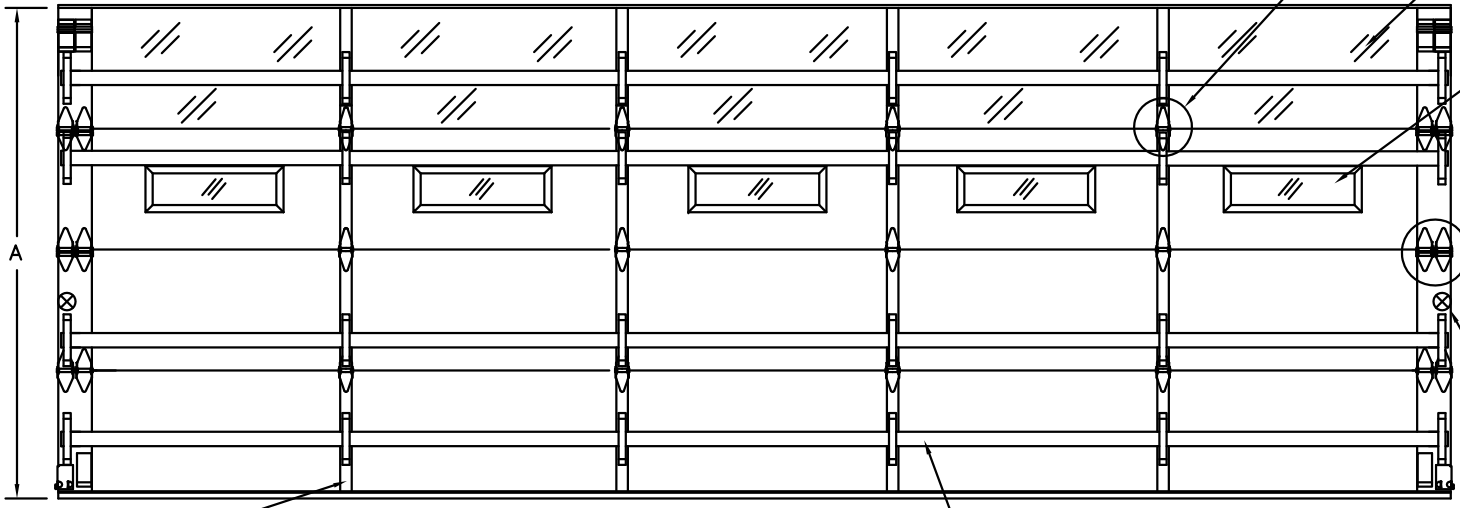
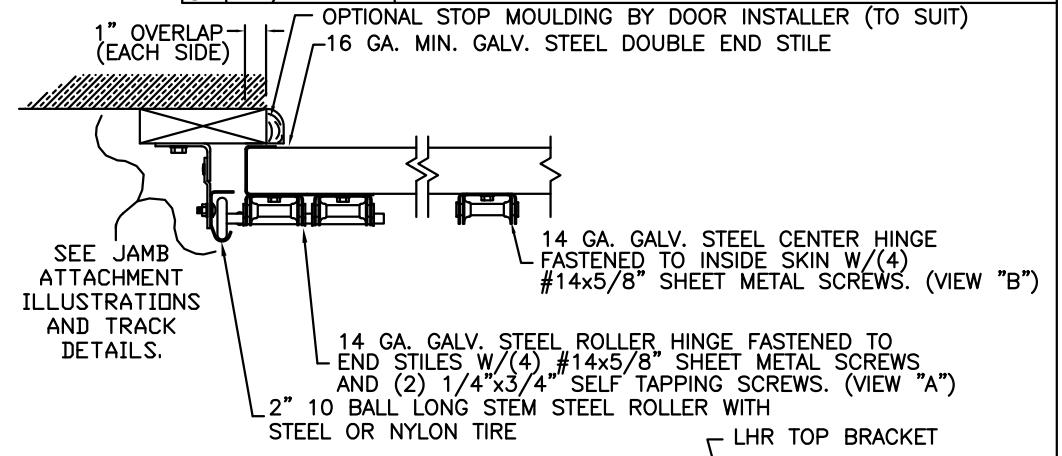


CLOPAY MODEL 3200 (24 GA MIN EXT SKIN) HOLMES MODEL 240, 240G (24 GA MIN EXT SKIN)
 CLOPAY MODEL 3220 (20 GA MIN EXT SKIN)

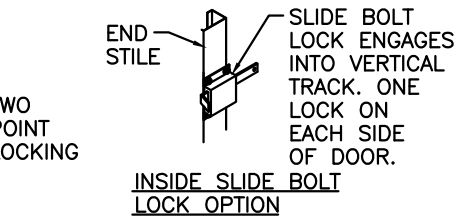
REV	DATE	DESCRIPTION
5	8/2005	ADDED M/N 240 (WAS ON D/N 102074)
6	11/2005	ADDED ROLLER OPTION
7	11/2008	REVISED JAMB ATTACHMENTS.
8	02/2012	UPDATED WINDCODE CHART



OPTIONAL ALUMINUM FULL VISION WINDOW LITE SECTIONS AVAILABLE (1/8" DSB, 1/8" ACRYLIC, 1/4" WIRE, 1/2" INSUL.). FULL VISION SECTIONS TO HAVE SAME REINFORCEMENT AS OTHER SECTIONS.
 OPTIONAL 24" x 8" DSB GLASS, INSULATED GLASS OR ACRYLIC WINDOW LITES.
 OPTIONAL ACRYLIC IS PLASKOLITE OPTIX, AN APPROVED CC2 PLASTIC IN COMPLIANCE WITH IBC/FBC 2606.

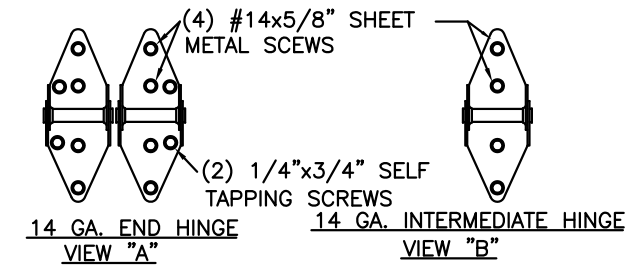


(1) 20 GA. x 2" GALV. STEEL BACKER PLATE AT EACH INTERMEDIATE HINGE LOCATION. BACKER PLATE ATTACHED WITH DOUBLE SIDED ACRYLIC ADHESIVE TO BACK OF DOOR.
 MAX. DOOR WIDTH 20'-2"
 ONE 6" C-CHANNEL PER SECTION



NOTE: DOUBLE TRACK LOW HEADROOM, HI-LIFT TRACK, FOLLOW-THE-ROOF TRACK, AND VERTICAL LIFT TRACK ARE AVAILABLE OPTIONS. 3" TRACK ALSO AVAILABLE.

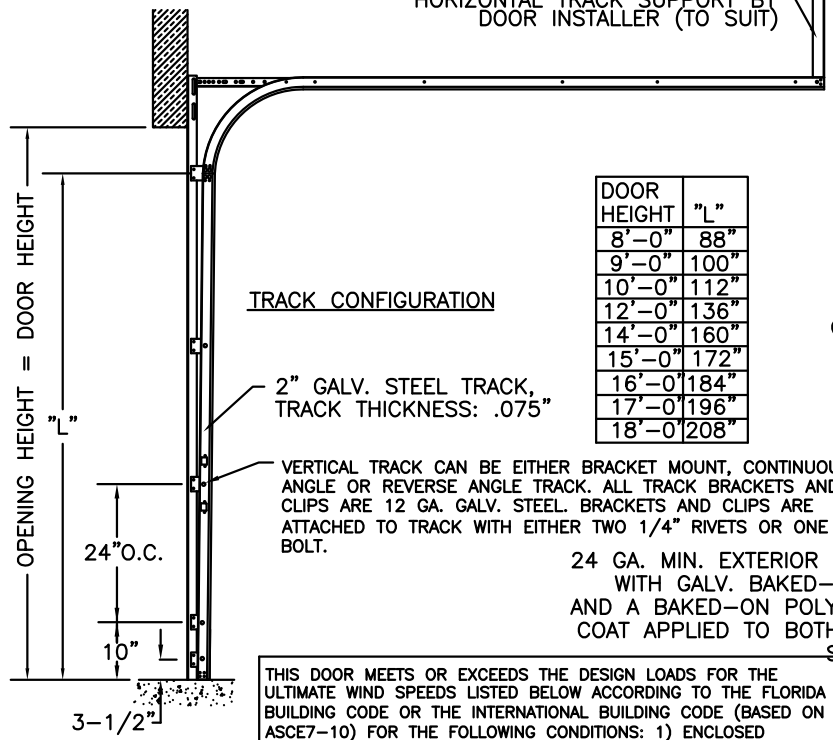
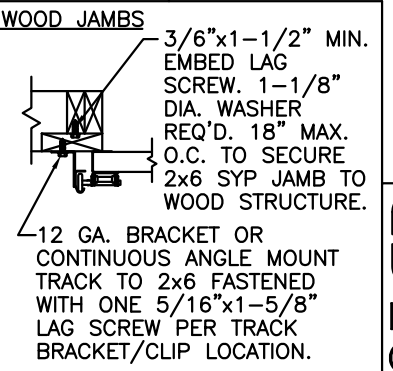
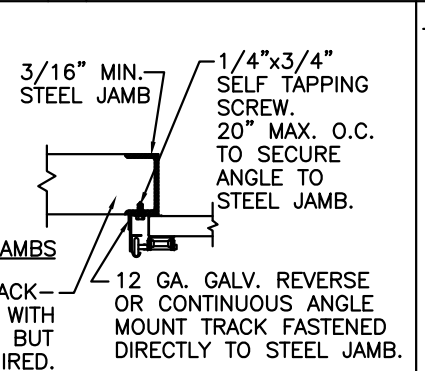
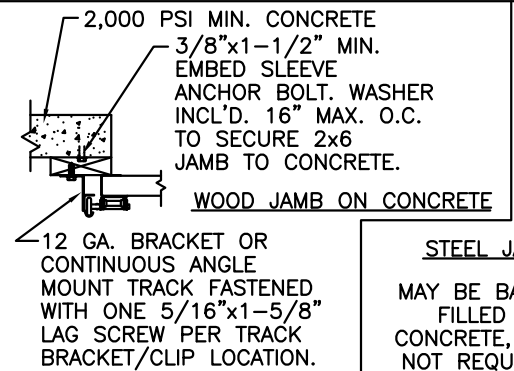
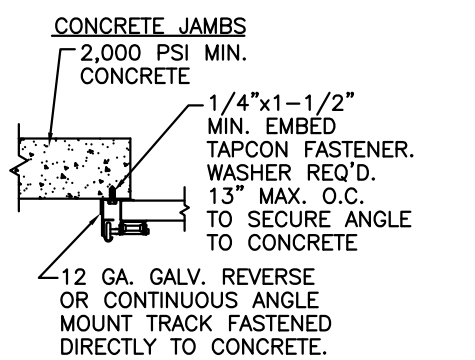
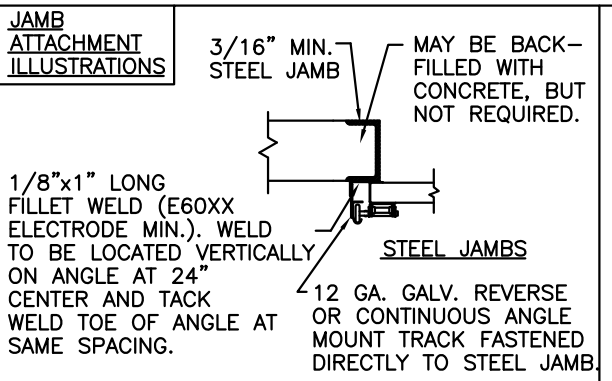
HORIZONTAL TRACK SUPPORT BY DOOR INSTALLER (TO SUIT)



DOOR HEIGHT 'A'	NUMBER OF SECTIONS
UP TO 8'-0"	4
8'-3" THRU 10'-0"	5
10'-3" THRU 12'-0"	6
12'-3" THRU 14'-0"	7
14'-3" THRU 16'-0"	8
16'-3" THRU 18'-0"	9

DOOR WIDTH	# OF BACKER PLATES	# OF STRAPS
16'-4" THRU 20'-2"	4	6

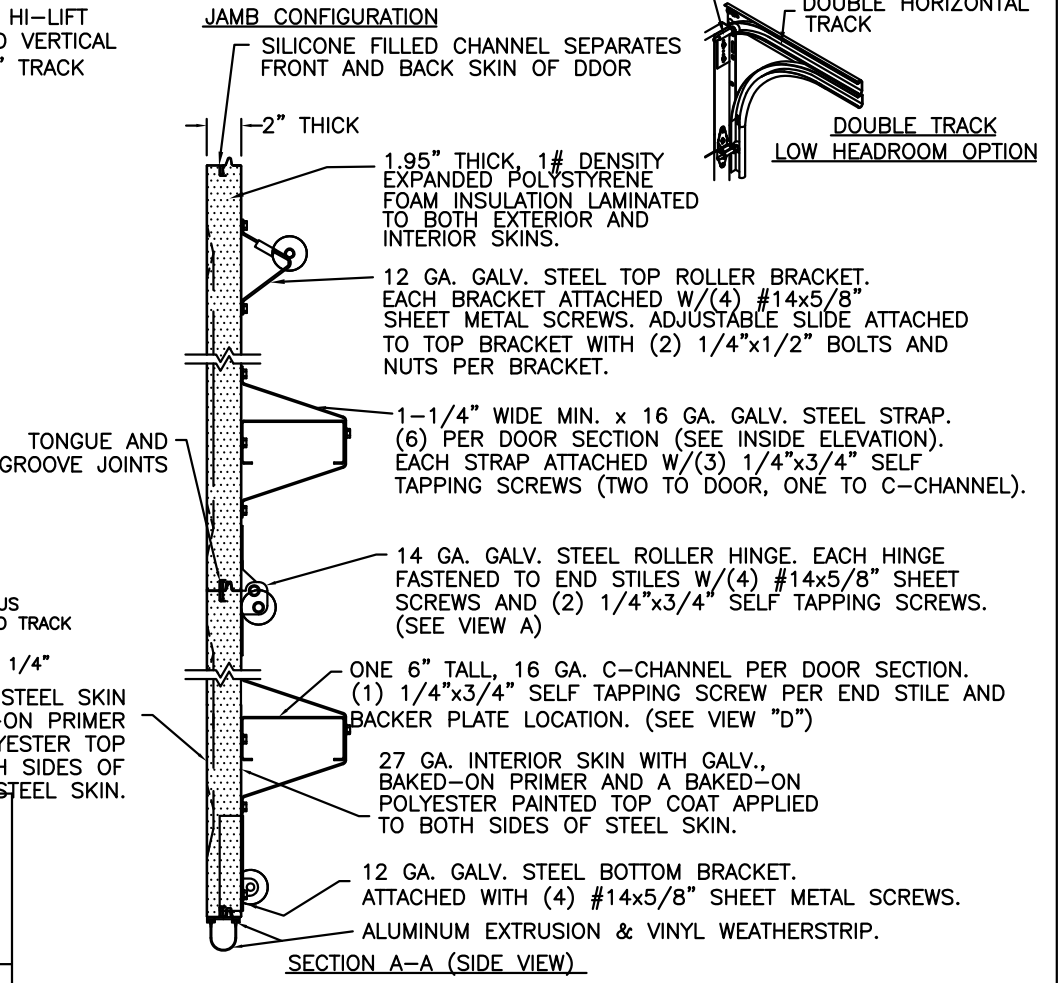
NOTE: THE DESIGN OF THE SUPPORTING STRUCTURAL ELEMENTS ARE THE RESPONSIBILITY OF THE PROFESSIONAL OF RECORD FOR THE BUILDING OR STRUCTURE AND IN ACCORDANCE WITH CURRENT BUILDING CODES FOR THE LOADS LISTED ON THIS DRAWING.



DOOR HEIGHT	"L"
8'-0"	88"
9'-0"	100"
10'-0"	112"
12'-0"	136"
14'-0"	160"
15'-0"	172"
16'-0"	184"
17'-0"	196"
18'-0"	208"

THIS DOOR MEETS OR EXCEEDS THE DESIGN LOADS FOR THE ULTIMATE WIND SPEEDS LISTED BELOW ACCORDING TO THE FLORIDA BUILDING CODE OR THE INTERNATIONAL BUILDING CODE (BASED ON ASCE7-10) FOR THE FOLLOWING CONDITIONS: 1) ENCLOSED BUILDING, 2) DOOR HAS 2' OF WIDTH IN BUILDING'S END ZONE, 3) ANY ROOF SLOPE, AND 4) TESTING IN ACCORDANCE WITH ANSI/DASMA 108. SITE-SPECIFIC CALCULATIONS BY A QUALIFIED DESIGN PROFESSIONAL MAY DIFFER.

ULTIMATE WIND SPEED (MPH)	130	140	145	150	165
EXPOSURE CATEGORY	B, C, D	B, C, D	B, C	B, C	B
MEAN ROOF HEIGHT	25'	15'	25'	15'	30'



THE OPTIONAL GLAZING SHOWN ON THIS DRAWING MEETS THE WIND LOAD REQUIREMENTS OF THE FLORIDA BUILDING CODE OR INTERNATIONAL BUILDING CODE BUT DOES NOT MEET THE IMPACT RESISTANT REQUIREMENT FOR WINDBORNE DEBRIS REGIONS (REF. CHAPTER 16 FBC/IBC)

DESIGN ENGINEER: MARK WESTERFIELD, P.E.
 FLORIDA P.E. #48495
 DESIGN LOADS: +25.0, -28.0 PSF
 TEST LOADS: +37.5, -42.0 PSF



CLOPAY BUILDING PRODUCTS COMPANY
 8585 DUKE BLVD.
 MASON, OH 45040
 (513) 770-4800

Clopay Corporation All Rights Reserved.

MANUFACTURING PRODUCT CODE:
 MPC: C-DSIE-1F447
 DATE: 9/12/96
 DRAWN BY: MWW
 CHECKED BY:

CLOPAY WINDLOAD RATING: W4
 MAX. SIZE: 20'-2" X 18'-0"
 DESCRIPTION: COMM 2" EPS: +25/-28 PSF
 DRAWING NUMBER: B 101682