

MODELS AVAILABLE (CLOPAY/ HOLMES/ IDEAL)
 MODELS 524, 520/ 224/ C4ST, C0ST
 INSULATED MODELS 524S, 520S, 524V/ 224S/ C4SS, C0SS, C4SV

MAX 8'-2" WIDE 18'-0" HIGH

REVISIONS

REV. NO.	ZONE:	DATE:	ECN NO.	APPVD:	DESCRIPTION
07	D4	10/2003	-	-	UPDATE JAMB ATTACHMENT INFO.
08	-	05/2005	-	-	UPDATE CODE REF., SPECIFIED OPTIONAL ACRYLIC.
09	-	08/2005	-	-	REVISED STRUT DESCRIPTION
10	-	10/2005	-	-	ADDED ROLLER OPTION
11	-	11/2008	-	-	ADDED MPC; UPDATED JAMB ATTACHMENT.
12	-	02/2012	-	-	UPDATED WINDCODE CHART

DOOR HEIGHT 'A'	NUMBER OF SECTIONS
UP TO 8'-0"	4
8'-3" THRU 10'-0"	5
10'-3" THRU 12'-0"	6
12'-3" THRU 14'-0"	7
14'-3" THRU 16'-0"	8
16'-3" THRU 18'-0"	9

HORIZONTAL TRACK END HANGER BRACKET (SUPPLIED BY DOOR INSTALLER) CLOSES ROLLER CHANNEL. INTERMEDIATE HANGER REQUIRED FOR DOORS IF HORIZONTAL TRACK DEFLECTION EXCEEDS 1/240TH OF THE DOOR HEIGHT

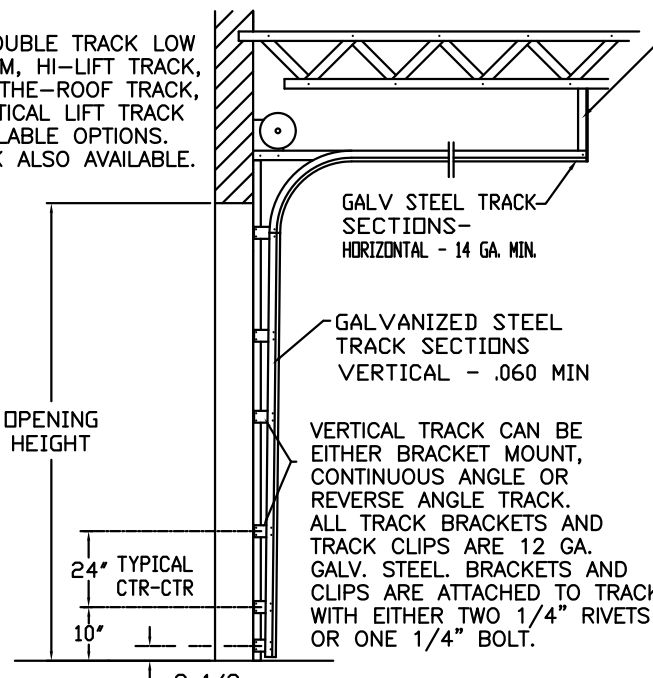
NOTE: DOUBLE TRACK LOW HEADROOM, HI-LIFT TRACK, FOLLOW-THE-ROOF TRACK, AND VERTICAL LIFT TRACK ARE AVAILABLE OPTIONS. 3" TRACK ALSO AVAILABLE.

THIS DOOR MEETS OR EXCEEDS THE DESIGN LOADS FOR THE ULTIMATE WIND SPEEDS LISTED BELOW ACCORDING TO THE FLORIDA BUILDING CODE OR THE INTERNATIONAL BUILDING CODE (BASED ON ASCE7-10) FOR THE FOLLOWING CONDITIONS: 1) ENCLOSED BUILDING, 2) DOOR HAS 2' OF WIDTH IN BUILDING'S END ZONE, 3) ANY ROOF SLOPE, AND 4) TESTING IN ACCORDANCE WITH ANSI/DASMA 108. SITE-SPECIFIC CALCULATIONS BY A QUALIFIED DESIGN PROFESSIONAL MAY DIFFER.

THE OPTIONAL GLAZING SHOWN ON THIS DRAWING MEETS THE WIND LOAD REQUIREMENTS OF THE FLORIDA BUILDING CODE OR INTERNATIONAL BUILDING CODE BUT DOES NOT MEET THE IMPACT RESISTANT REQUIREMENT FOR WINDBORNE DEBRIS REGIONS (REF. CHAPTER 16 FBC/IBC)

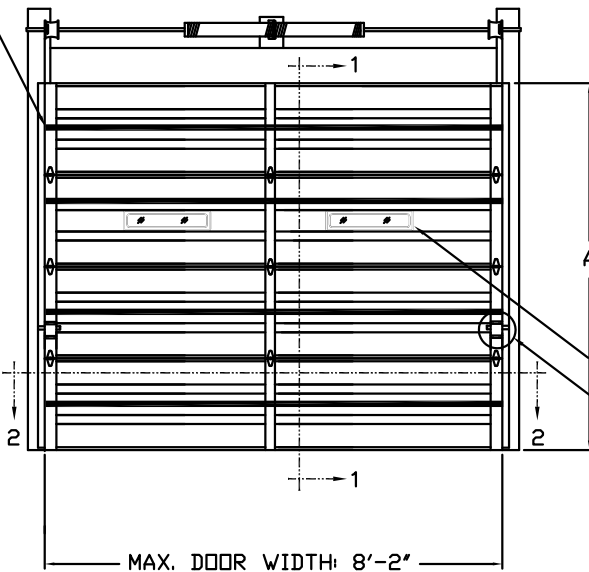
ULTIMATE WIND SPEED (MPH)	130	135	140	150	165
EXPOSURE CATEGORY	B, C, D	B, C, D	B, C	B, C	B
MEAN ROOF HEIGHT	25'	15'	25'	15'	30'

SECTIONS ARE 1-7/8" THK PANELS ROLL FORMED OF .019" MIN. HOT DIPPED GALVANIZING, ROLL FORMED STEEL.



SIDE ELEVATION STANDARD-LIFT TRACK DETAILS

2-1/4" x 20 GA. GALV. STEEL U-BAR. ONE U-BAR PER DOOR SECTION U-BARS ATTACHED AT EACH STILE LOCATION WITH (2) 1/4" x 3/4" SELF-TAPPING SCREWS



OPTIONAL INSULATION (SEE MODEL EXPLANATION)

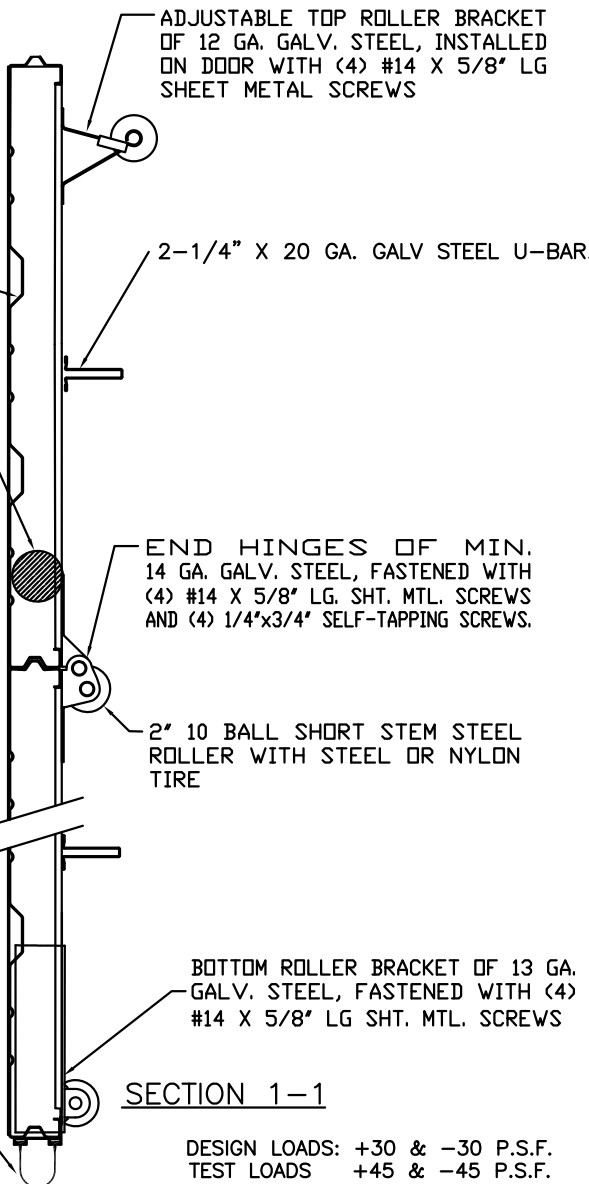
OPTIONAL ALUMINUM FULL VISION WINDOW LITE SECTIONS AVAILABLE (1/8" DSB, 1/8" ACRYLIC, OR 1/4" WIRE) FULL VISION SECTIONS TO HAVE 2" X 2" X 1/8" L-ANGLE HORIZONTAL REINFORCEMENT. L-ANGLES ATTACHED TO THE REINFORCING RIB WITH (2) 1/4"-20 X 5/8" HEX HEAD BOLTS AND NUTS AT EVERY HINGE LOCATION.

OPTIONAL 24" x 6" POLYPROPYLENE SCREW TOGETHER FRAME TYPE DSB OR 1/8" ACRYLIC WINDOW LITES AVAILABLE.

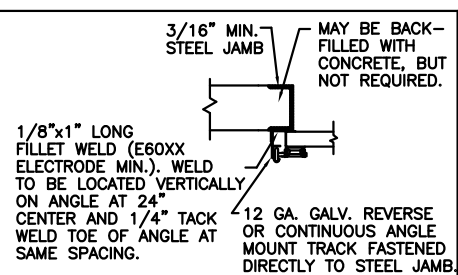
TWO POINT LOCKING REQ'D

OPTIONAL ACRYLIC IS PLASKOLITE OPTIX, AN APPROVED CC2 PLASTIC IN COMPLIANCE WITH IBC/FBC 2606.

BOTTOM SECTION REINFORCED WITH TEMPERED ALUMINUM EXTRUSION WITH INTEGRAL RETAINER FOR FLEXIBLE VINYL ASTRAGAL

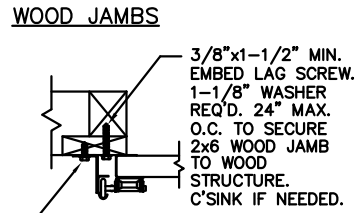


SECTION 2-2



WELDED

STEEL JAMBS



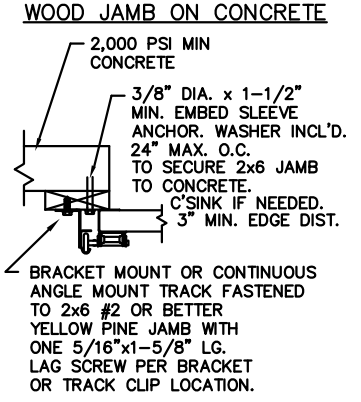
WOOD JAMBS

THE DESIGN OF THE SUPPORTING STRUCTURAL ELEMENTS IS THE RESPONSIBILITY OF THE BUILDING ENGINEER OR ARCHITECT OF RECORD.

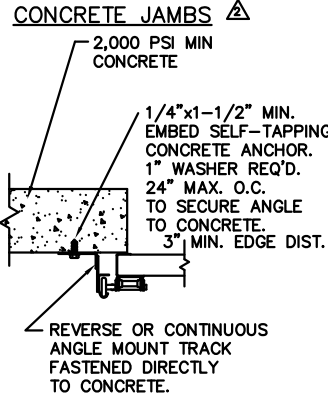
MARK WESTERFIELD, P.E.
 FLORIDA P.E. #48495, NC P.E. #23832,
 TEXAS P.E. #91513

DESIGN LOADS: +30 & -30 P.S.F.
 TEST LOADS +45 & -45 P.S.F.

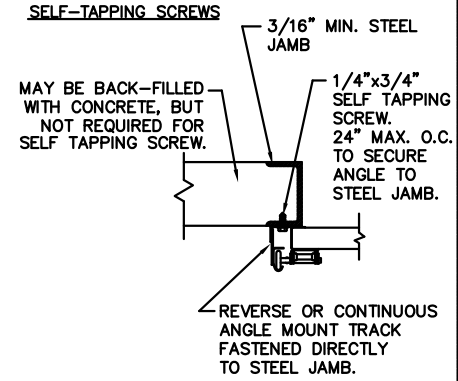
MANUFACTURING PRODUCT CODE:
 MPC: C-PAN-1E448



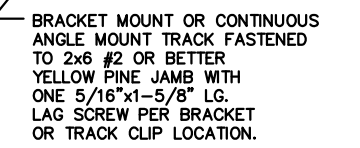
WOOD JAMB ON CONCRETE



CONCRETE JAMBS



SELF-TAPPING SCREWS



BRACKET MOUNT OR CONTINUOUS ANGLE MOUNT TRACK FASTENED TO 2x6 #2 OR BETTER YELLOW PINE JAMB WITH ONE 5/16"x1-5/8" LG. LAG SCREW PER BRACKET OR TRACK CLIP LOCATION.

CLOPAY CORP.
 ALL RIGHTS RESERVED.

Unless Stated Otherwise TOLERANCES are
 .0 = ±.031
 .00 = ±.015
 .000 = ±.005
 .0000 = ±.001
 Degrees = ±1/2"

Clopay
 Building Products Company

8585 Duke Boulevard
 Mason, OH 45040 USA
 Tel. No. 513-770-4800
 Fax No. 513-770-4853

WINDLOAD RATING
 W5

DESCRIPTION: COMMERCIAL RIBBED DOOR, 8' 2" WIDTH, +/- 30 PSF DESIGN LOAD

DRAWN BY: RJK DATE: 4/19/99 SCALE: NOTED DWG. SIZE B
 CHECKED BY: MWW DATE: 4/99 SHEET 1 OF 1

DWG. NO.: 101874