

NOTE: DOUBLE TRACK LOW HEADROOM, HI-LIFT TRACK, FOLLOW-THE-ROOF TRACK, AND VERTICAL LIFT TRACK ARE AVAILABLE OPTIONS. 3" TRACK ALSO AVAILABLE.

MAX 10'-2" WIDE X 18'-0" HIGH

MODELS AVAILABLE (CLOPAY/ HOLMES/ IDEAL)
 MODELS 524, 520/ 224/ C4ST, COST
 INSULATED MODELS 524S, 520S, 524V/ 224S/ C4SS, COSS, C4SV

REVISIONS

REV. NO.	ZONE:	DATE:	ECN NO.	APPVD:	DESCRIPTION
06	C2	02/2003	-	-	REVISED FULL VISION REINFORCEMENT & ATTACHMENT
07	D4	10/2003	-	-	UPDATE JAMB ATTACHMENT INFO.
08	-	05/2005	-	-	UPDATE CODE REF., SPECIFIED OPTIONAL ACRYLIC.
09	-	10/2005	-	-	ADDED ROLLER OPTION
10	-	11/2008	-	-	ADDED MPC; UPDATED JAMB ATTACHMENT.
11	-	02/2012	-	-	UPDATED WINDCODE CHART

HORIZONTAL TRACK END HANGER BRACKET (SUPPLIED BY DOOR INSTALLER) CLOSES ROLLER CHANNEL. INTERMEDIATE HANGER REQUIRED FOR DOORS IF HORIZONTAL TRACK DEFLECTION EXCEEDS 1/240TH OF THE DOOR HEIGHT

THIS DOOR MEETS OR EXCEEDS THE DESIGN LOADS FOR THE ULTIMATE WIND SPEEDS LISTED BELOW ACCORDING TO THE FLORIDA BUILDING CODE OR THE INTERNATIONAL BUILDING CODE (BASED ON ASCE7-10) FOR THE FOLLOWING CONDITIONS: 1) ENCLOSED BUILDING, 2) DOOR HAS 2' OF WIDTH IN BUILDING'S END ZONE, 3) ANY ROOF SLOPE, AND 4) TESTING IN ACCORDANCE WITH ANSI/DASMA 108. SITE-SPECIFIC CALCULATIONS BY A QUALIFIED DESIGN PROFESSIONAL MAY DIFFER.

ULTIMATE WIND SPEED (MPH)	130	140	145	150	170
EXPOSURE CATEGORY	B, C, D	B, C, D	B, C	B, C	B
MEAN ROOF HEIGHT	25'	15'	25'	15'	30'

THE OPTIONAL GLAZING SHOWN ON THIS DRAWING MEETS THE WIND LOAD REQUIREMENTS OF THE FLORIDA BUILDING CODE OR INTERNATIONAL BUILDING CODE BUT DOES NOT MEET THE IMPACT RESISTANT REQUIREMENT FOR WINDBORNE DEBRIS REGIONS (REF. CHAPTER 16 FBC/IBC)

DOOR HEIGHT 'A'	NUMBER OF SECTIONS
UP TO 8'-0"	4
8'-3" THRU 10'-0"	5
10'-3" THRU 12'-0"	6
12'-3" THRU 14'-0"	7
14'-3" THRU 16'-0"	8
16'-3" THRU 18'-0"	9

DOOR WIDTH	NUMBER OF CENTER STILES
UP TO 9'-2"	1
9'-3" THRU 10'-2"	2

OPTIONAL ALUMINUM FULL VISION WINDOW LITE SECTIONS AVAILABLE (1/8" DSB, 1/8" ACRYLIC, OR 1/4" WIRE) FULL VISION SECTIONS TO HAVE 2" X 2" X 1/8" L-ANGLE HORIZONTAL REINFORCEMENT. L-ANGLES ATTACHED TO THE REINFORCING RIB WITH (2) 1/4"-20 X 5/8" HEX HEAD BOLTS AND NUTS AT EVERY HINGE LOCATION.

SECTIONS ARE 1-7/8" THK PANELS ROLL FORMED OF .022" MIN. HOT DIPPED GALVANIZING, ROLL FORMED STEEL.

ADJUSTABLE TOP ROLLER BRACKET OF 12 GA. GALV. STEEL, INSTALLED ON DOOR WITH (4) #14 X 5/8" LG SHEET METAL SCREWS

3" X 20 GA. GALV STEEL U-BAR.

OPTIONAL INSULATION (SEE MODEL EXPLANATION)

OPTIONAL ACRYLIC IS PLASKOLITE OPTIX, AN APPROVED CC2 PLASTIC IN COMPLIANCE WITH IBC/FBC 2606.

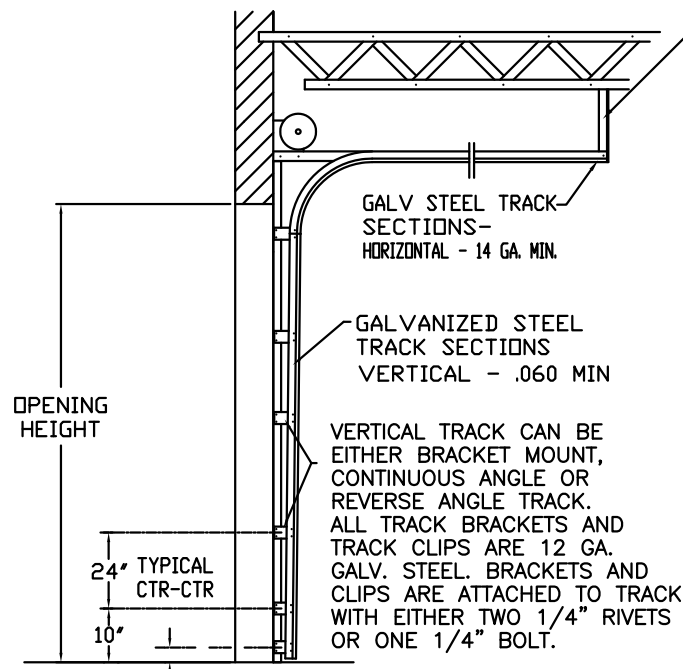
OPTIONAL 24" x 6" POLYPROPYLENE SCREW TOGETHER FRAME TYPE DSB OR 1/8" ACRYLIC WINDOW LITES AVAILABLE.

END ROLLER HINGES OF MIN. 14 GA. GALV. STEEL, FASTENED WITH (4) #14 X 5/8" LG. SHT. MTL. SCREWS AND (4) 1/4"x3/4" SELF-TAPPING SCREWS.

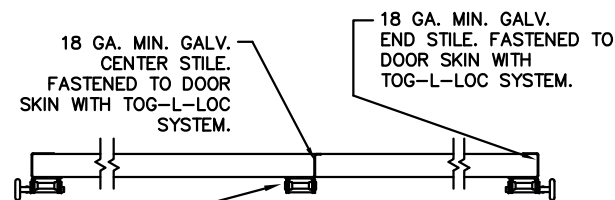
2" 10 BALL SHORT STEM STEEL ROLLER WITH STEEL OR NYLON TIRE

BOTTOM ROLLER BRACKET OF 13 GA. GALV. STEEL, FASTENED WITH (4) #14 X 5/8" LG SHT. MTL. SCREWS

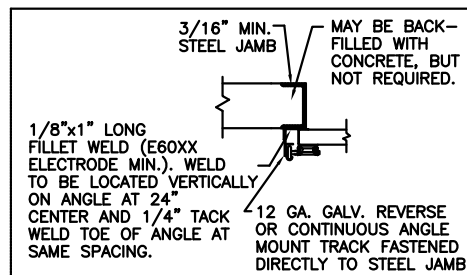
DESIGN LOADS: +30 & -30 P.S.F.
 TEST LOADS +45 & -45 P.S.F.



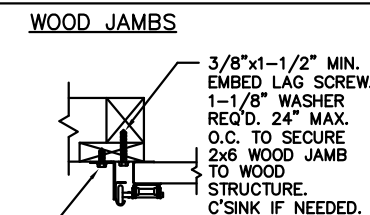
SIDE ELEVATION STANDARD-LIFT TRACK DETAILS



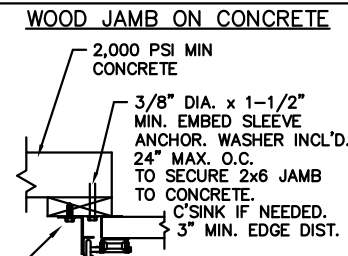
SECTION 2-2



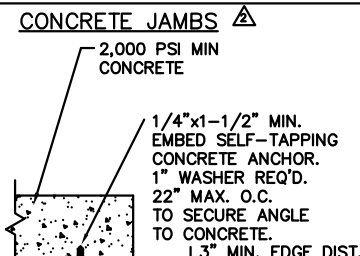
WELDED STEEL JAMBS



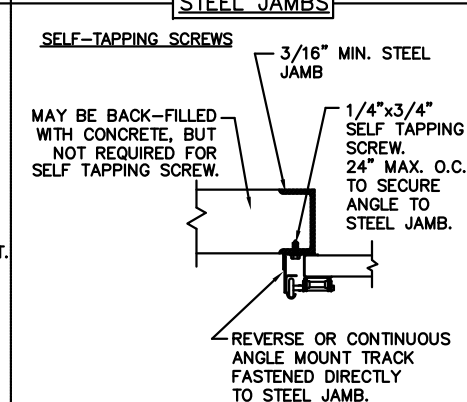
WOOD JAMBS



WOOD JAMB ON CONCRETE



CONCRETE JAMBS



SELF-TAPPING SCREWS STEEL JAMBS

BRACKET MOUNT OR CONTINUOUS ANGLE MOUNT TRACK FASTENED TO 2x6 #2 OR BETTER YELLOW PINE JAMB WITH ONE 5/16"x1-5/8" LG. LAG SCREW PER BRACKET OR TRACK CLIP LOCATION.

REVERSE OR CONTINUOUS ANGLE MOUNT TRACK FASTENED DIRECTLY TO CONCRETE.

MAY BE BACK-FILLED WITH CONCRETE, BUT NOT REQUIRED FOR SELF TAPPING SCREW.

REVERSE OR CONTINUOUS ANGLE MOUNT TRACK FASTENED DIRECTLY TO STEEL JAMB.

BRACKET MOUNT OR CONTINUOUS ANGLE MOUNT TRACK FASTENED TO 2x6 #2 OR BETTER YELLOW PINE JAMB WITH ONE 5/16"x1-5/8" LG. LAG SCREW PER BRACKET OR TRACK CLIP LOCATION.

THE DESIGN OF THE SUPPORTING STRUCTURAL ELEMENTS IS THE RESPONSIBILITY OF THE BUILDING ENGINEER OR ARCHITECT OF RECORD.

MARK WESTERFIELD, P.E.
 FLORIDA P.E. #48495, NC P.E. #23832,
 TEXAS P.E. #91513

Unless Stated Otherwise TOLERANCES are

- .0 = ±.031
- .00 = ±.015
- .000 = ±.005
- .0000 = ±.001
- Degrees = ±1/2'

Unless Stated Otherwise DIMENSIONS ARE IN INCHES.

CLOPAY CORP.
 ALL RIGHTS RESERVED.



SECTION 1-1

BOTTOM SECTION REINFORCED WITH TEMPERED ALUMINUM EXTRUSION WITH INTEGRAL RETAINER FOR FLEXIBLE VINYL ASTRAGAL

MANUFACTURING PRODUCT CODE:
 MPC: C-PAN-1E448

WINDLOAD RATING
 W5

Clopay
 Building Products Company
 8585 Duke Boulevard
 Mason, OH 45040 USA
 Tel. No. 513-770-4800
 Fax No. 513-770-4853

DESCRIPTION: COMMERCIAL RIBBED DOOR, +/- 30 PSF DESIGN LOAD			
DRAWN BY: RJK	DATE: 4/19/99	SCALE: NOTED	DWG. SIZE B
CHECKED BY: MWW	DATE: 4/99	SHEET 1 OF 1	
DWG. NO.: 101875			