

MODELS AVAILABLE (CLOPAY/ HOLMES/ IDEAL)
 MODELS 524, 520/ 224/ C4ST, COST
 INSULATED MODELS 524S, 520S, 524V/ 224S/ C4SS, COSS, C4SV

MAX 20'-2" WIDE X 18'-0" HIGH

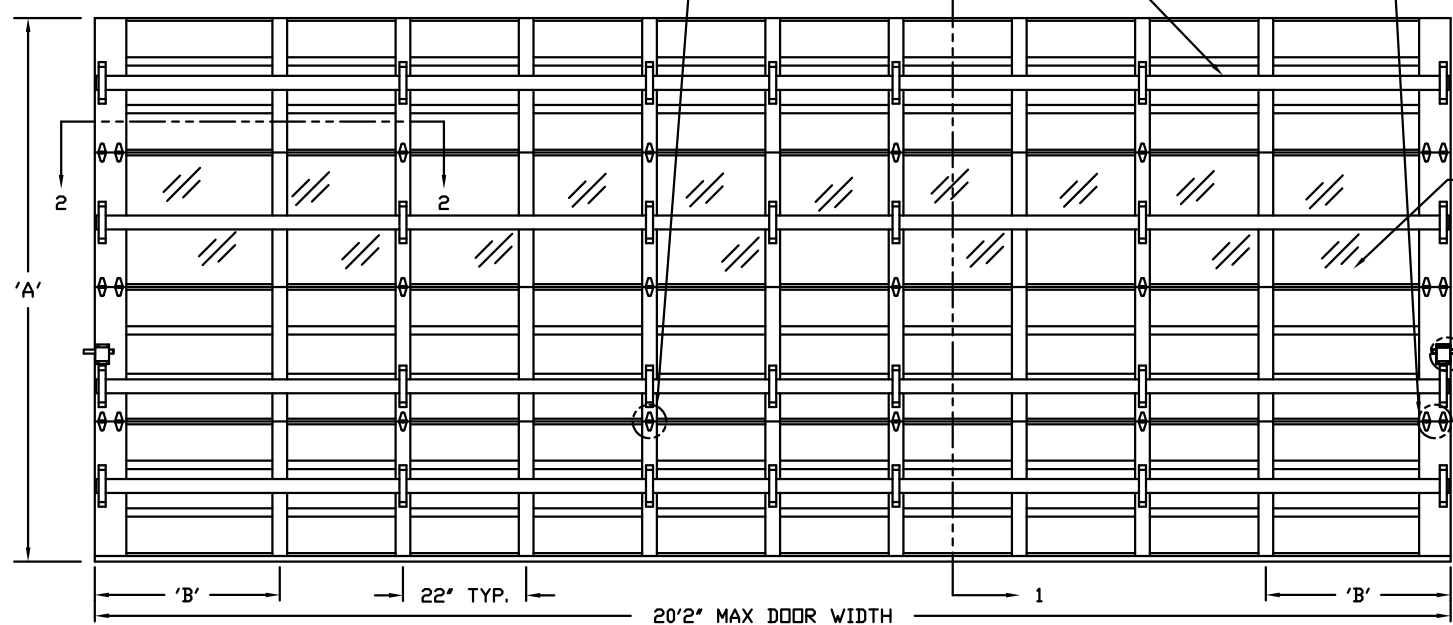
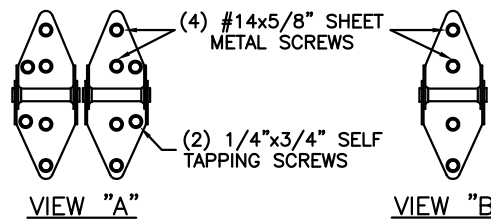
THIS DOOR MEETS OR EXCEEDS THE DESIGN LOADS FOR THE ULTIMATE WIND SPEEDS LISTED BELOW ACCORDING TO THE FLORIDA BUILDING CODE OR THE INTERNATIONAL BUILDING CODE (BASED ON ASCE7-10) FOR THE FOLLOWING CONDITIONS: 1) ENCLOSED BUILDING, 2) DOOR HAS 2' OF WIDTH IN BUILDING'S END ZONE, 3) ANY ROOF SLOPE, AND 4) TESTING IN ACCORDANCE WITH ANSI/DASMA 108. SITE-SPECIFIC CALCULATIONS BY A QUALIFIED DESIGN PROFESSIONAL MAY DIFFER.

ULTIMATE WIND SPEED (MPH)	125	130	135	145	160
EXPOSURE CATEGORY	B, C, D	B, C, D	B, C	B, C	B
MEAN ROOF HEIGHT	25'	15'	25'	15'	30'

THE OPTIONAL GLAZING SHOWN ON THIS DRAWING MEETS THE WIND LOAD REQUIREMENTS OF THE FLORIDA BUILDING CODE OR INTERNATIONAL BUILDING CODE BUT DOES NOT MEET THE IMPACT RESISTANT REQUIREMENT FOR WINDBORNE DEBRIS REGIONS (FBC / IBC CHAPTER 16).

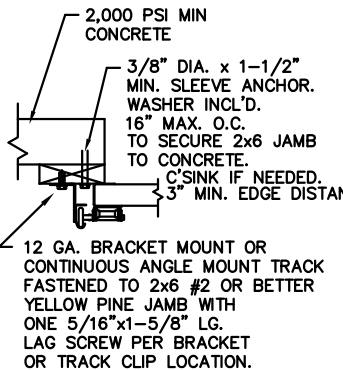
DOOR HEIGHT 'A'	NUMBER OF SECTIONS
UP TO 8'-0"	4
8'-3" THRU 10'-0"	5
10'-3" THRU 12'-0"	6
12'-3" THRU 14'-0"	7
14'-3" THRU 16'-0"	8
16'-3" THRU 18'-0"	9

DOOR WIDTH	NUMBER OF CENTER STILES	NUMBER OF C-CHANNEL STRAPS
16'-3" THRU 16'-6"	7	6
16'-7" THRU 20'-2"	9	7

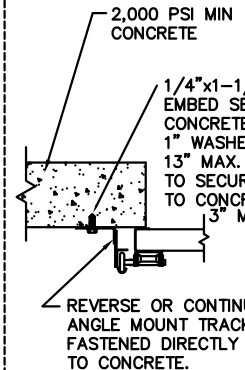


ANCHOR NOTE: FIRST (BOTTOM) ANCHOR STARTING AT NO MORE THAN HALF OF THE MAXIMUM ON-CENTER DISTANCE. HIGHEST ANCHOR INSTALLED AT LEAST AS HIGH AS THE DOOR OPENING.

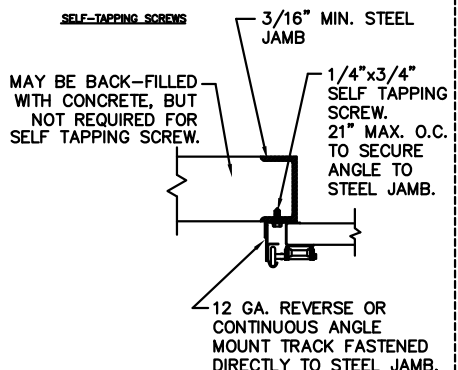
WOOD JAMB ON CONCRETE



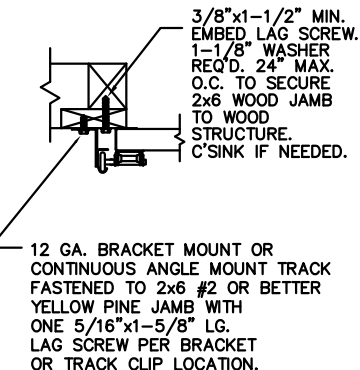
CONCRETE JAMBS



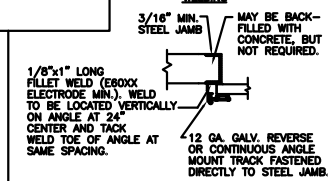
STEEL JAMBS



WOOD JAMBS



STEEL JAMBS

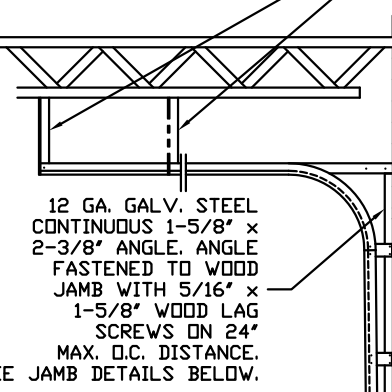


CLOPAY CORP. ALL RIGHTS RESERVED.
 Third Angle Projection

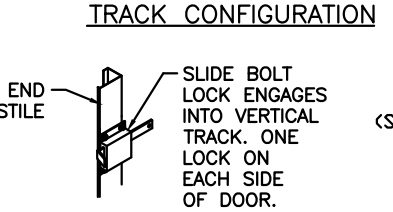
Unless Stated Otherwise TOLERANCES are
 .0 = ±.031
 .00 = ±.015
 .000 = ±.005
 .0000 = ±.001
 Degrees = ±1/2"
 Unless Stated Otherwise DIMENSIONS ARE IN INCHES.

REVISIONS					
REV. NO.	ZONE:	DATE:	ECN NO.	APPVD:	DESCRIPTION
05	D3	07/2004	ER1058R1	-	REVISED END STILE FROM (2) PC TO (1) PC
06	-	05/2005	-	-	UPDATED CODE REF.
07	-	10/2005	-	-	ADDED ROLLER OPTION
08	-	11/2008	-	-	ADDED MPC, FULL-VISION OPTION.
09	-	02/2012	-	-	UPDATED WINDCODE CHART

THE DESIGN OF THE SUPPORTING STRUCTURAL ELEMENTS IS THE RESPONSIBILITY OF THE BUILDING ENGINEER OR ARCHITECT OF RECORD.



VERTICAL TRACK TO BE EITHER, CONTINUOUS ANGLE, OR REVERSE ANGLE TRACK. ALL TRACK CLIPS ARE 12 GA. GALV. STEEL. CLIPS ARE ATTACHED TO TRACK WITH EITHER TWO 1/4" RIVETS OR ONE 1/4" BOLT.



INSIDE SLIDE BOLT LOCK OPTION

DOOR HEIGHT	"L"
8'-0"	88"
9'-0"	100"
10'-0"	112"
12'-0"	136"
14'-0"	160"
15'-0"	172"
16'-0"	184"
17'-0"	194"
18'-0"	204"

24" D.C.
 10"
 3-1/2"

SECTIONS ARE 1-7/8" THK PANELS ROLL FORMED OF 24GA. MIN. HOT DIPPED GALVANIZING, ROLL FORMED STEEL.

DESIGN LOADS: +25 & -25 P.S.F.
 TEST LOADS +37.5 & -37.5 P.S.F.

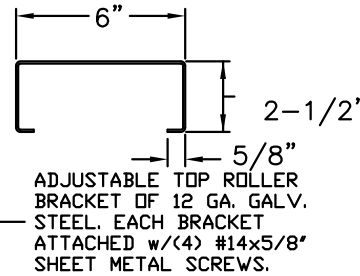
CLOPAY Building Products Company
 8585 Duke Boulevard
 Mason, OH 45040 USA
 Tel. No. 513-770-4800
 Fax No. 513-770-4853

MANUFACTURING PRODUCT CODE: MPC: C-PAN-1E448

CLOPAY WINDLOAD RATING
 W4
 DESCRIPTION: COMMERCIAL RIBBED DOOR, +/- 25 PSF DESIGN LOAD
 DRAWN BY: JJM DATE: 3/28/00 SCALE: NTS DWG. SIZE B
 CHECKED BY: MWW DATE: 3/00 SHEET 1 OF 1
 DWG. NO.: 102126 VER: IBC

HORIZONTAL TRACK END HANGER BRACKET (SUPPLIED BY DOOR INSTALLER) CLOSES ROLLER CHANNEL. INTERMEDIATE HANGER REQ'D FOR DOORS IF HORIZONTAL TRACK DEFLECTION EXCEEDS 1/240TH OF DOOR HEIGHT.
 NOTE: DOUBLE TRACK LOW HEADROOM, HI-LIFT TRACK, FOLLOW-THE-ROOF TRACK, AND VERTICAL LIFT TRACK ARE AVAILABLE OPTIONS. 3" TRACK ALSO AVAILABLE.

VIEW "C"
 6" TALL C-CHANNEL
 16 GA. GALV. STEEL
 MIN YIELD STRENGTH 50KSI



ADJUSTABLE TOP ROLLER BRACKET OF 12 GA. GALV. STEEL. EACH BRACKET ATTACHED W/(4) #14x5/8" SHEET METAL SCREWS.

1-1/4" WIDE x 16 GA. GALV. STEEL STRAP. EACH STRAP ATTACHED W/(3) 1/4"x3/4" SELF TAPPING SCREWS (TWO SCREWS TO DOOR SECTION, ONE SCREW TO C-CHANNEL).

(1) 6"x16 GA. C-CHANNEL PER DOOR SECTION.
 (1) 1/4"x3/4" SELF TAPPING SCREW PER STILE LOCATION. (SEE VIEW "C")

ROLLER (CENTER) HINGES OF 14 GA. GALV. STEEL. EACH FASTENED TO END STILES W/(4) #14x5/8" SHEET METAL SCREWS AND W/(2) 1/4"x3/4" SELF TAPPING SCREWS.

ROLLER (END) HINGE OF 14 GA. GALV. STEEL. EACH FASTENED TO END STILES W/(4) #14x5/8" SHEET METAL SCREWS AND W/(2) 1/4"x3/4" SELF TAPPING SCREWS.

BOTTOM ROLLER BRACKET OF 12 GA. GALV. STEEL FASTENED W/(4) #14x5/8" SHEET METAL SCREWS

ALUMINUM EXTRUSION AND VINYL WEATHERSTRIP

SECTION 1 - 1

MARK WESTERFIELD, P.E.
 FLORIDA P.E. #48495,
 NC P.E. #23832, TEXAS P.E. #91513