

NOTE: DOUBLE TRACK LOW HEADROOM, HI-LIFT TRACK, FOLLOW-THE-ROOF TRACK, AND VERTICAL LIFT TRACK ARE AVAILABLE OPTIONS. 3" TRACK ALSO AVAILABLE.

THE DESIGN OF THE SUPPORTING STRUCTURAL ELEMENTS IS THE RESPONSIBILITY OF THE BUILDING ENGINEER OR ARCHITECT OF RECORD.

MODELS AVAILABLE (CLOPAY/ HOLMES/ IDEAL)  
 MODELS 524, 520/ 224/ C4ST, C0ST  
 INSULATED MODELS 524S, 520S, 524V/ 224S/ C4SS, C0SS, C4SV

MAX. 12'-2" WIDE X 18'-0" HIGH

REVISIONS

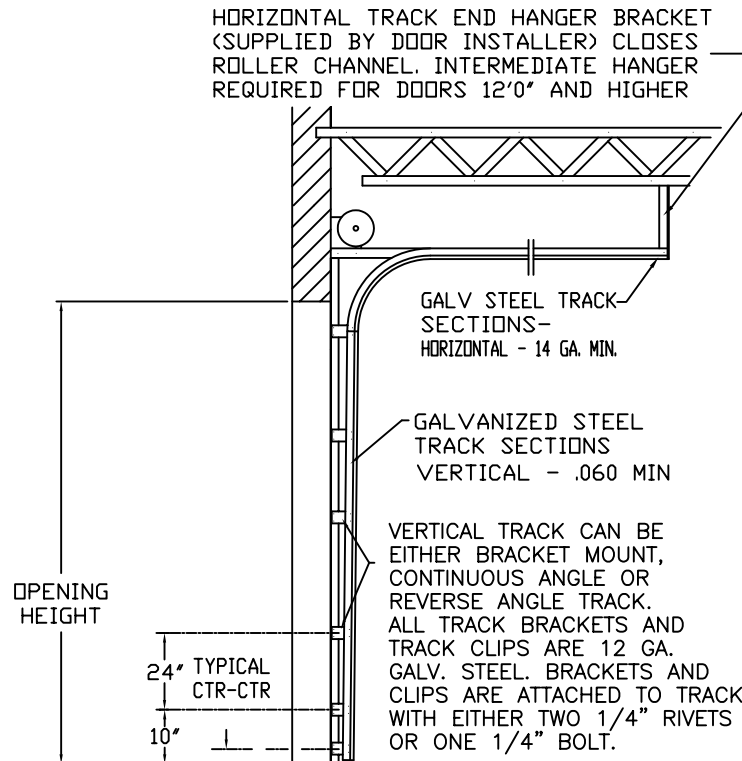
REV. NO.	ZONE:	DATE:	ECN NO.	APPVD:	DESCRIPTION
3	D4	10/2003	-	-	UPDATE JAMB ATTACHMENT INFO.
4	-	05/2005	-	-	UPDATE CODE REF., SPECIFIED OPTIONAL ACRYLIC.
5	-	09/2005	-	-	CLARIFIED END STILE FINISH; ADDED ROLLER OPTION & FV SECTION
6	C3	06/2007	-	-	CLARIFIED U-BAR TABLE
7	-	11/2008	-	-	ADDED MPC AND WELDED JAMB ATTACH. DETAIL.
8	-	02/2012	-	-	UPDATED WINDCODE CHART

THE OPTIONAL GLAZING SHOWN ON THIS DRAWING MEETS THE WIND LOAD REQUIREMENTS OF THE FLORIDA BUILDING CODE OR INTERNATIONAL BUILDING CODE BUT DOES NOT MEET THE IMPACT RESISTANT REQUIREMENT FOR WINDBORNE DEBRIS REGIONS (REF. CHAPTER 16 FBC/IBC)

3" X 20 GA. GALV STEEL U-BAR. TWO U-BARS ON EVERY SECTION

SECTIONS ARE 1-7/8" THK PANELS ROLL FORMED OF .022" MIN. HOT DIPPED GALVANIZING, ROLL FORMED STEEL.

ADJUSTABLE TOP ROLLER BRACKET OF 12 GA. GALV. STEEL, INSTALLED ON DOOR WITH (4) #14 X 5/8" LG SHEET METAL SCREWS



THIS DOOR MEETS OR EXCEEDS THE DESIGN LOADS FOR THE ULTIMATE WIND SPEEDS LISTED BELOW ACCORDING TO THE FLORIDA BUILDING CODE OR THE INTERNATIONAL BUILDING CODE (BASED ON ASCE7-10) FOR THE FOLLOWING CONDITIONS: 1) ENCLOSED BUILDING, 2) DOOR HAS 2' OF WIDTH IN BUILDING'S END ZONE, 3) ANY ROOF SLOPE, AND 4) TESTING IN ACCORDANCE WITH ANSI/DASMA 108. SITE-SPECIFIC CALCULATIONS BY A QUALIFIED DESIGN PROFESSIONAL MAY DIFFER.

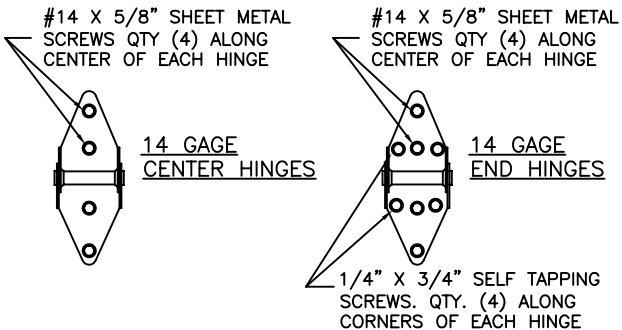
ULTIMATE WIND SPEED (MPH)	160	165	175	185	200
EXPOSURE CATEGORY	B, C, D	B, C, D	B, C	B, C	B
MEAN ROOF HEIGHT	25'	15'	25'	15'	30'

OPTIONAL ALUMINUM FULL VISION WINDOW LITE SECTIONS AVAILABLE (1/8" DSB, 1/8" ACRYLIC, 1/4" WIRE, 1/2" INSUL.). FULL VISION SECTIONS TO HAVE SAME REINFORCEMENT AS OTHER SECTIONS. OPTIONAL ACRYLIC IS PLASKOLITE OPTIX, AN APPROVED CC2 PLASTIC IN COMPLIANCE WITH IBC/FBC 2606.

3" x 20 GA. GALV. STEEL U-BARS ARRANGED WITH 2 BARS PER SECTION U-BARS ATTACHED AT EACH STILE LOCATION WITH (2) 1/4" x 3/4" SELF-TAPPING SCREWS

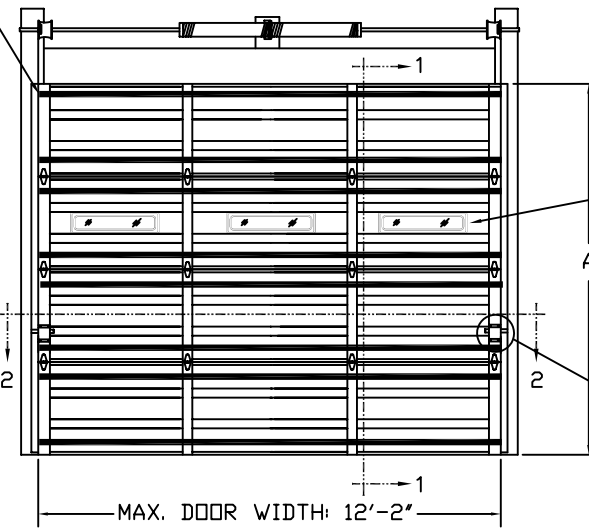
OPTIONAL INSULATION (SEE MODEL EXPLANATION)

INTERMEDIATE ROLLER HINGES OF MIN. 14 GA. GALV. STEEL, FASTENED WITH (4) #14 X 5/8" LG. SHT. MTL. SCREWS AND (4) 1/4"x3/4" SELF-TAPPING SCREWS.



18 GA. MIN. GALV. CENTER STILE. FASTENED TO DOOR SKIN WITH TOG-L-LOC SYSTEM.

18 GA. MIN. GALV. OR PAINTED END STILE. FASTENED TO DOOR SKIN WITH TOG-L-LOC SYSTEM.



SECTION 1 - 1

2" 10 BALL SHORT STEM STEEL ROLLER WITH STEEL OR NYLON TIRE

BOTTOM ROLLER BRACKET OF 13 GA. GALV. STEEL, FASTENED WITH (4) #14 X 5/8" LG SHT. MTL. SCREWS

BOTTOM SECTION REINFORCED WITH TEMPERED ALUMINUM EXTRUSION WITH INTEGRAL RETAINER FOR FLEXIBLE VINYL ASTRAGAL

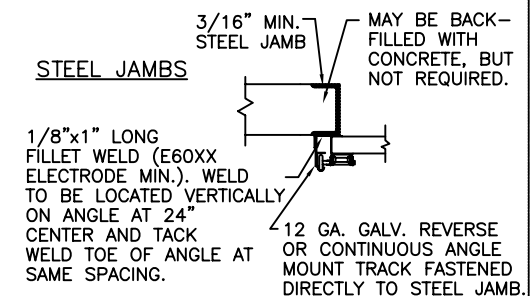
DESIGN LOADS: +37 & -42 P.S.F.  
 TEST LOADS +55 & -63 P.S.F.

MARK WESTERFIELD, P.E.  
 FLORIDA P.E. #48495, NC P.E. #23832,  
 TEXAS P.E. #91513

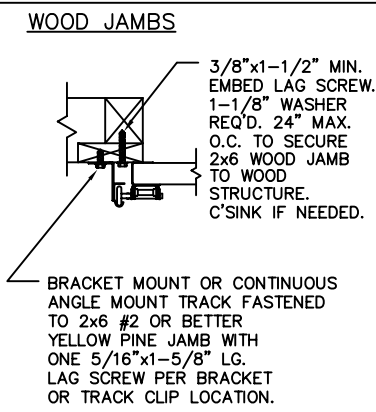
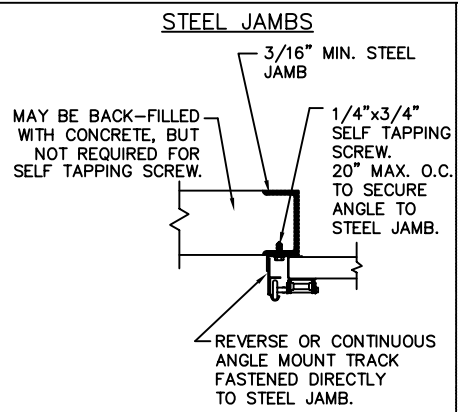
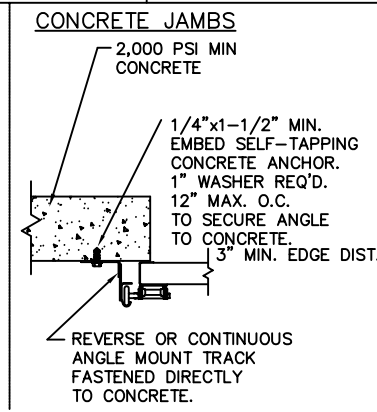
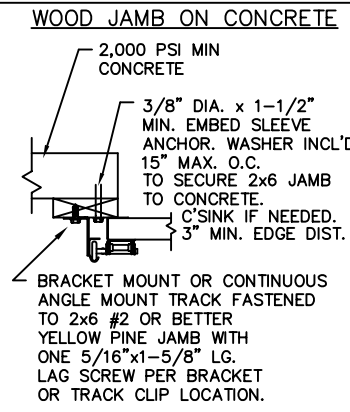
MANUFACTURING PRODUCT CODE:  
 MPC: C-PAN-1E448

TABLE 1

DOOR HEIGHT	TOTAL U-BARS REQUIRED
4'3" TO 6'0"	6
6'3" TO 8'0"	8
8'3" TO 10'0"	10
10'3" TO 12'0"	12
12'3" TO 14'0"	14
14'3" TO 16'0"	16
16'3" TO 18'0"	18



ANCHOR NOTE: FIRST (BOTTOM) ANCHOR STARTING AT NO MORE THAN HALF OF THE MAXIMUM ON-CENTER DISTANCE. HIGHEST ANCHOR INSTALLED AT LEAST AS HIGH AS THE DOOR OPENING.



Unless Stated Otherwise TOLERANCES are  
 .0 = ±.031  
 .00 = ±.015  
 .000 = ±.005  
 .0000 = ±.001  
 Degrees = ±1/2"

**Clopay** Building Products Company  
 8585 Duke Boulevard  
 Mason, OH 45040 USA  
 Tel. No. 513-770-4800  
 Fax No. 513-770-4853

WINDLOAD RATING  
 W6

CLOPAY CORP.  
 ALL RIGHTS RESERVED.

Third Angle Projection

DESCRIPTION: COMMERCIAL RIBBED DOOR

DRAWN BY: RJK DATE: 10/15/01 SCALE: NOTED DWG. B

CHECKED BY: MWW DATE: 10/01 SHEET 1 OF 1 SIZE B

DWG. NO.: 102446