

NOTE: DOUBLE TRACK LOW HEADROOM, HI-LIFT TRACK, FOLLOW-THE-ROOF TRACK AND VERTICAL LIFT TRACK ARE AVAILABLE OPTIONS. 3" TRACK ALSO AVAILABLE.

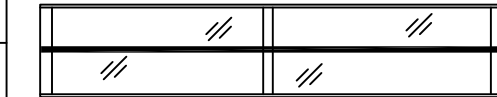
MAX. 14'-2" WIDE X 18'-0" HIGH

REVISIONS

REV. NO.	ZONE:	DATE:	ECN- NO.	APPVD:	DESCRIPTION
05	B4	07/30/04	ER1018R3	-	REVISED END STILE FROM (2) PC TO (1) PC
06	-	05/18/05	-	-	UPDATED CODE REF., SPECIFIED OPTIONAL ACRYLIC.
07	-	10/26/05	-	-	ADDED ROLLER OPTION & FV SECTION
08	-	11/2008	-	-	ADDED MPC; UPDATED JAMB ATTACHMENTS.
09	-	02/2012	-	-	UPDATED WINDCODE CHART

MODELS AVAILABLE (CLOPAY/ HOLMES/ IDEAL)  
 MODELS 524, 520/ 224/ C4ST, COST  
 INSULATED MODELS 524S, 520S, 524V/ 224S/ C4SS, COSS, C4SV

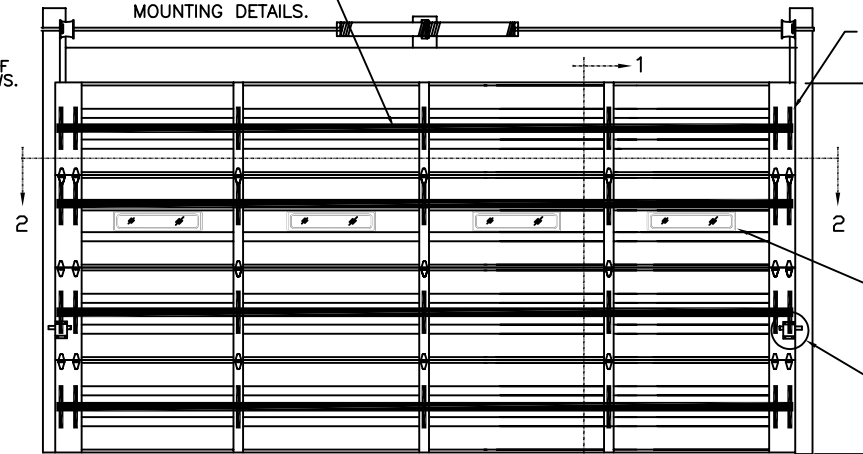
DOOR HEIGHT 'A'	NUMBER OF SECTIONS
UP TO 8'-0"	4
8'-3" THRU 10'-0"	5
10'-3" THRU 12'-0"	6
12'-3" THRU 14'-0"	7
14'-3" THRU 16'-0"	8
16'-3" THRU 18'-0"	9



OPTIONAL ALUMINUM FULL VISION WINDOW LITE SECTIONS AVAILABLE (1/8" DSB, 1/8" ACRYLIC, 1/4" WIRE, 1/2" INSUL.). FULL VISION SECTIONS TO HAVE SAME REINFORCEMENT AS OTHER SECTIONS. OPTIONAL ACRYLIC IS PLASKOLITE OPTIX, AN APPROVED CC2 PLASTIC IN COMPLIANCE WITH IBC/FBC 2606.

DOOR WIDTH	NUMBER OF CENTER STILES	NUMBER OF C-CHANNEL STRAPS
12'-3" THRU 13'-2"	2	6
13'-3" THRU 14'-2"	3	7

4" x 14 GA. C-CHANNEL. ONE C-CHANNEL PER SECTION. SEE SECTION 1-1 FOR MOUNTING DETAILS.



DOUBLE END STILES

OPTIONAL ACRYLIC IS PLASKOLITE OPTIX, AN APPROVED CC2 PLASTIC IN COMPLIANCE WITH IBC/FBC 2606.

OPTIONAL 24" x 6" POLYPROPYLENE SCREW TOGETHER FRAME TYPE DSB OR 1/8" ACRYLIC WINDOW LITES.

TWO POINT LOCKING REQ'D

MAX. DOOR WIDTH: 14'-2"

THE OPTIONAL GLAZING SHOWN ON THIS DRAWING MEETS THE WIND LOAD REQUIREMENTS OF THE FLORIDA BUILDING CODE OR INTERNATIONAL BUILDING CODE BUT DOES NOT MEET THE IMPACT RESISTANT REQUIREMENT FOR WINDBORNE DEBRIS REGIONS (REF. CHAPTER 16 FBC/IBC)

THIS DOOR MEETS OR EXCEEDS THE DESIGN LOADS FOR THE ULTIMATE WIND SPEEDS LISTED BELOW ACCORDING TO THE FLORIDA BUILDING CODE OR THE INTERNATIONAL BUILDING CODE (BASED ON ASCE7-10) FOR THE FOLLOWING CONDITIONS: 1) ENCLOSED BUILDING, 2) DOOR HAS 2' OF WIDTH IN BUILDING'S END ZONE, 3) ANY ROOF SLOPE, AND 4) TESTING IN ACCORDANCE WITH ANSI/DASMA 108. SITE-SPECIFIC CALCULATIONS BY A QUALIFIED DESIGN PROFESSIONAL MAY DIFFER.

ULTIMATE WIND SPEED (MPH)	155	160	170	180	195
EXPOSURE CATEGORY	B, C, D	B, C, D	B, C	B, C	B
MEAN ROOF HEIGHT	25'	15'	25'	15'	30'

ANCHOR NOTE: FIRST (BOTTOM) ANCHOR STARTING AT NO MORE THAN HALF OF THE MAXIMUM ON-CENTER DISTANCE. HIGHEST ANCHOR INSTALLED AT LEAST AS HIGH AS THE DOOR OPENING.

BOTTOM SECTION REINFORCED WITH TEMPERED ALUMINUM EXTRUSION WITH INTEGRAL RETAINER FOR FLEXIBLE VINYL ASTRAGAL

MARK WESTERFIELD, P.E.  
 FLORIDA P.E. #48495, NC P.E. #23832,  
 TEXAS P.E. #91513

SECTION 1 - 1

MANUFACTURING PRODUCT CODE:  
 MPC: C-PAN-1E448

Unless Stated Otherwise TOLERANCES are

.0	= ±.031
.00	= ±.015
.000	= ±.005
.0000	= ±.001
Degrees	= ±1/2'

Unless Stated Otherwise DIMENSIONS ARE IN INCHES.

**Clopay**  
 Building Products Company  
 8585 Duke Boulevard  
 Mason, OH 45040 USA  
 Tel. No. 513-770-4800  
 Fax No. 513-770-4853

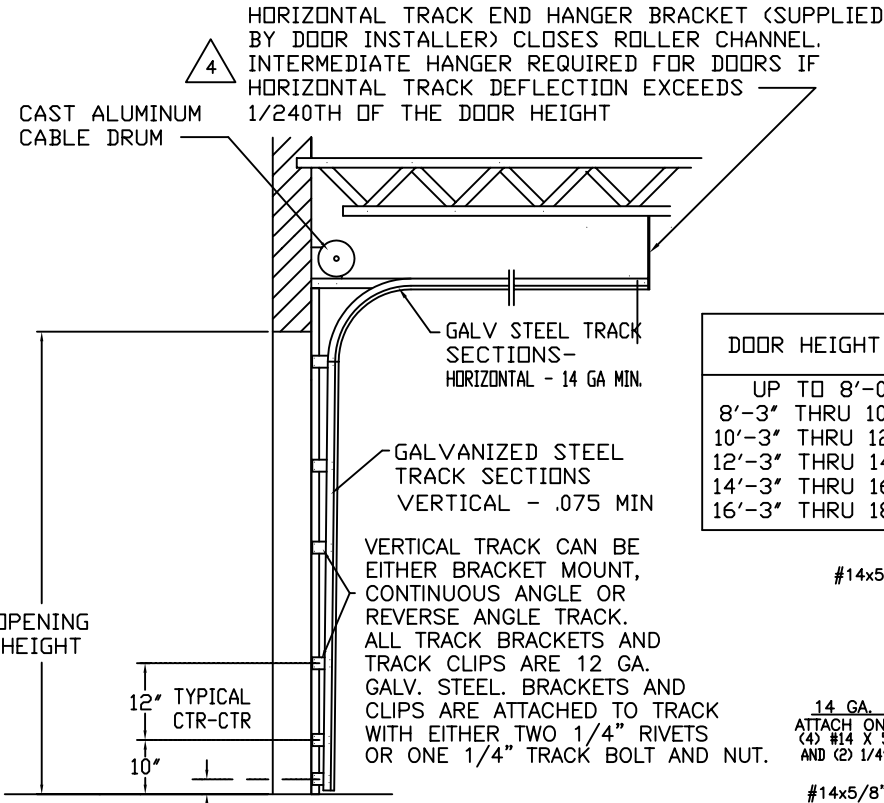
WINDLOAD RATING  
 W6

DESCRIPTION: COMMERCIAL RIBBED DOOR, +37/ -38 PSF DESIGN LOAD

DRAWN BY: DAS DATE: 5/13/02 SCALE: NONE DWG. B

CHECKED BY: MWW DATE: 5/02 SHEET 1 OF 1 SIZE B

DWG. NO.: 102585 VER: IBC

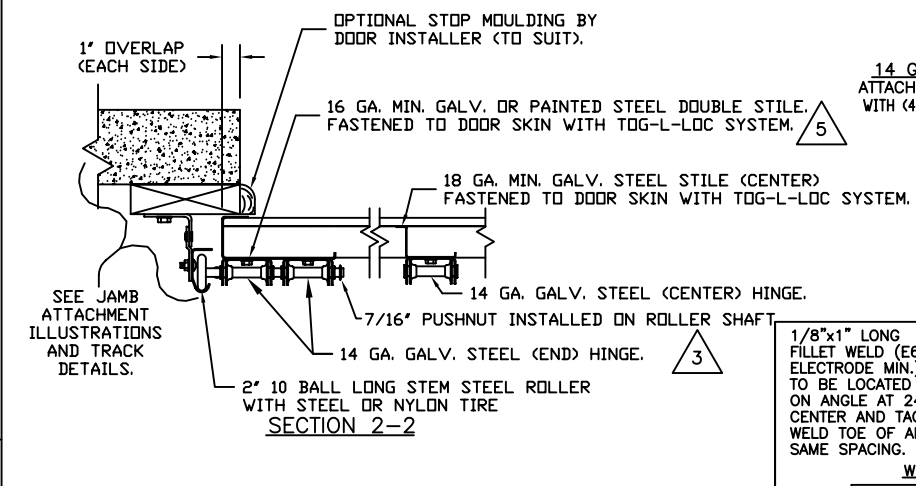


HORIZONTAL TRACK END HANGER BRACKET (SUPPLIED BY DOOR INSTALLER) CLOSES ROLLER CHANNEL. INTERMEDIATE HANGER REQUIRED FOR DOORS IF HORIZONTAL TRACK DEFLECTION EXCEEDS 1/240TH OF THE DOOR HEIGHT

GALV. STEEL TRACK SECTIONS- HORIZONTAL - 14 GA MIN.  
 GALVANIZED STEEL TRACK SECTIONS VERTICAL - .075 MIN

VERTICAL TRACK CAN BE EITHER BRACKET MOUNT, CONTINUOUS ANGLE OR REVERSE ANGLE TRACK. ALL TRACK BRACKETS AND TRACK CLIPS ARE 12 GA. GALV. STEEL. BRACKETS AND CLIPS ARE ATTACHED TO TRACK WITH EITHER TWO 1/4" RIVETS OR ONE 1/4" TRACK BOLT AND NUT.

STANDARD-LIFT TRACK DETAILS



OPTIONAL STOP MOULDING BY DOOR INSTALLER (TO SUIT).

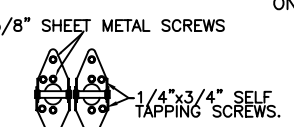
16 GA. MIN. GALV. OR PAINTED STEEL DOUBLE STILE. FASTENED TO DOOR SKIN WITH TGG-L-LOC SYSTEM.

18 GA. MIN. GALV. STEEL STILE (CENTER) FASTENED TO DOOR SKIN WITH TGG-L-LOC SYSTEM.

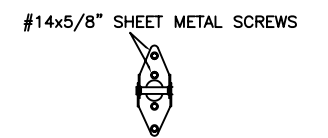
14 GA. GALV. STEEL (CENTER) HINGE.

14 GA. GALV. STEEL (END) HINGE.

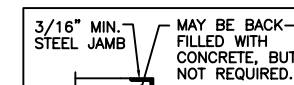
2" 10 BALL LONG STEM STEEL ROLLER WITH STEEL OR NYLON TIRE SECTION 2-2



14 GA. DOUBLE END HINGES ATTACH ON EACH HINGE AS SHOWN (4) #14 X 5/8" LG. SHT. MTL. SCREWS AND (2) 1/4"x3/4" SELF-TAPPING SCREWS.



14 GA. INTERMEDIATE HINGE ATTACH ON EACH HINGE AS SHOWN WITH (4) 1/4" X 5/8" SHEET METAL SCREWS

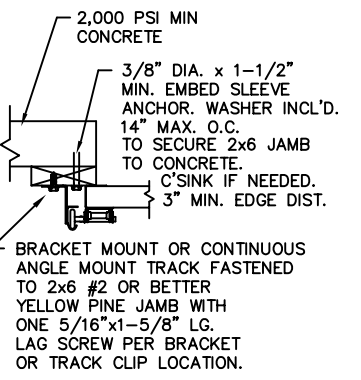


3/16" MIN. STEEL JAMB MAY BE BACK-FILLED WITH CONCRETE, BUT NOT REQUIRED.

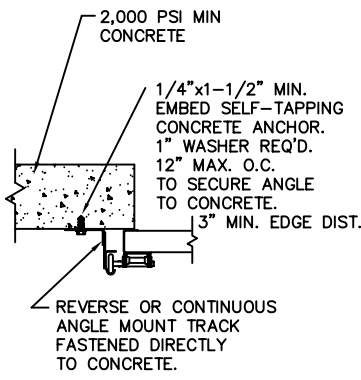
1/8"x1" LONG FILLET WELD (E60XX ELECTRODE MIN.). WELD TO BE LOCATED VERTICALLY ON ANGLE AT 24° CENTER AND TACK WELD TOE OF ANGLE AT SAME SPACING.

12 GA. GALV. REVERSE OR CONTINUOUS ANGLE MOUNT TRACK FASTENED DIRECTLY TO STEEL JAMB.

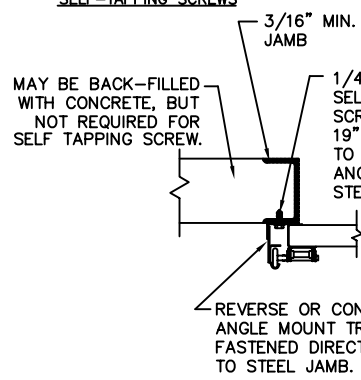
WOOD JAMB ON CONCRETE



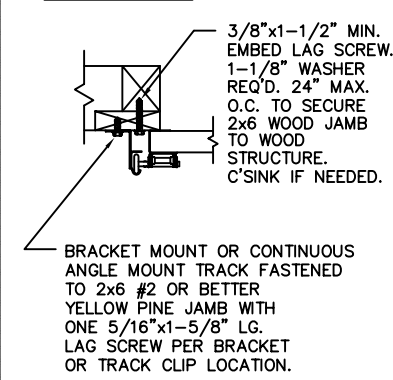
CONCRETE JAMBS



STEEL JAMBS



WOOD JAMBS



THE DESIGN OF THE SUPPORTING STRUCTURAL ELEMENTS IS THE RESPONSIBILITY OF THE BUILDING ENGINEER OR ARCHITECT OF RECORD.

CLOPAY CORP. ALL RIGHTS RESERVED.

Third Angle Projection