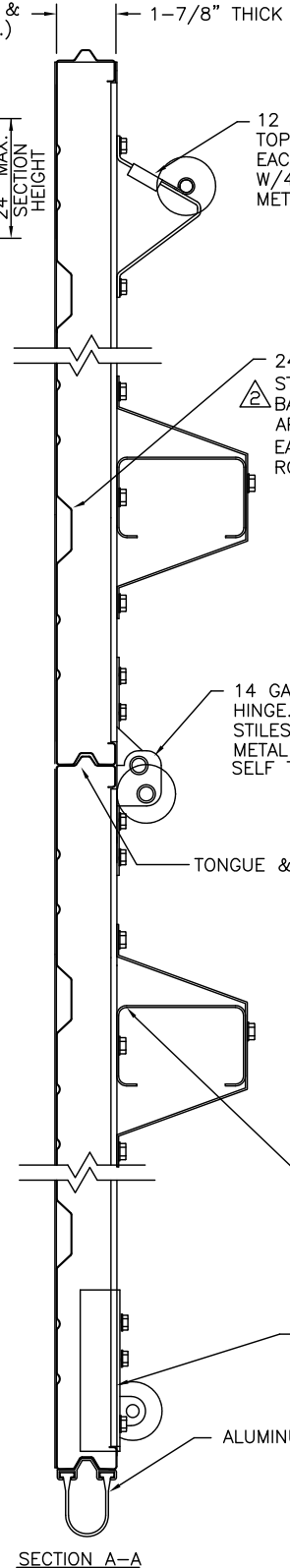
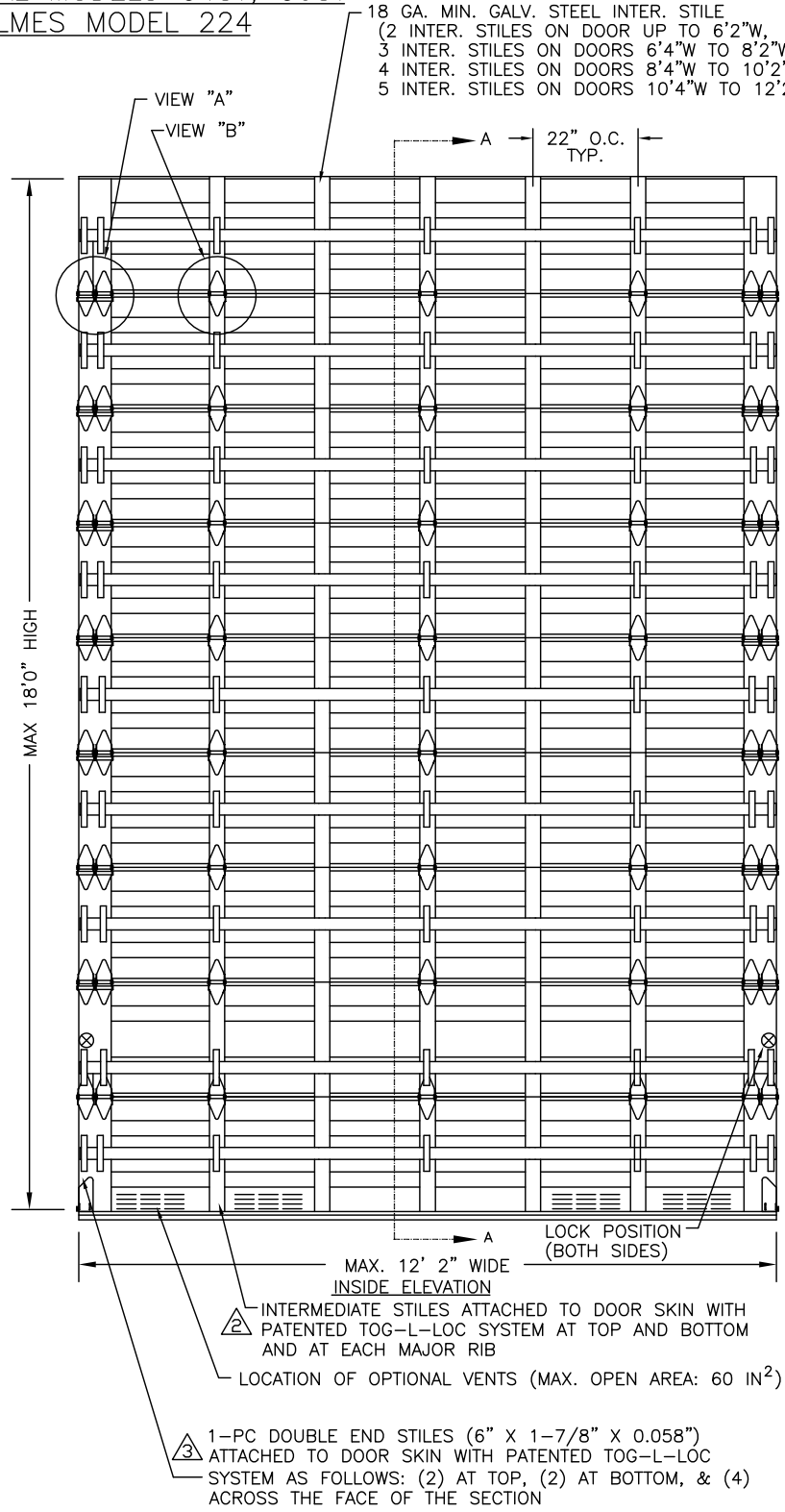


CLOPAY MODELS 524, 520
 IDEAL MODELS C4ST, C0ST
 HOLMES MODEL 224

MODELS 520, C0ST: 20 GA STEEL SKIN
 MODELS 524, C4ST, 224: 24 GA STEEL SKIN

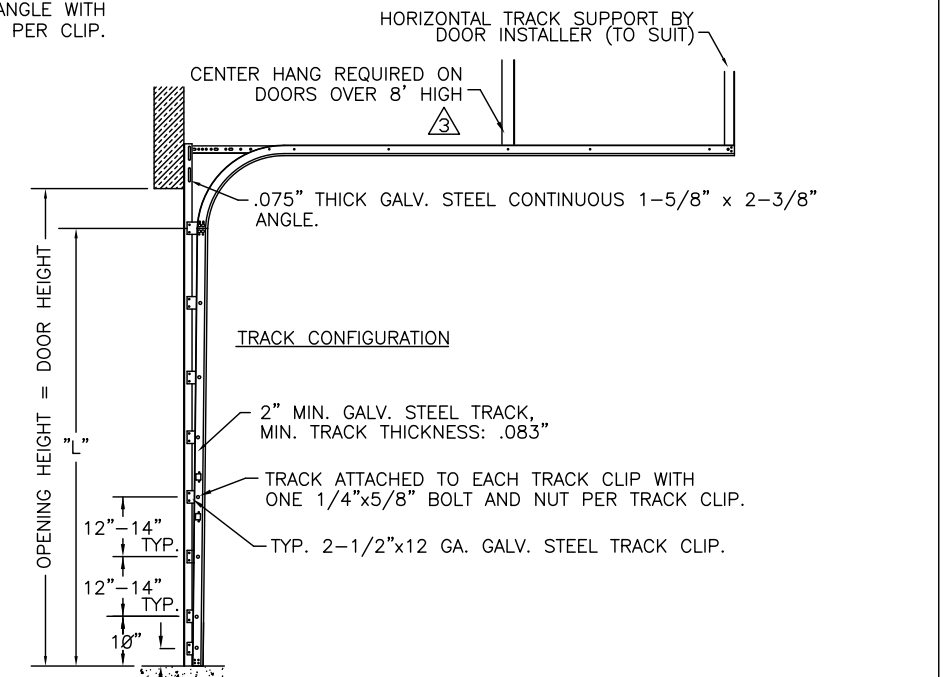
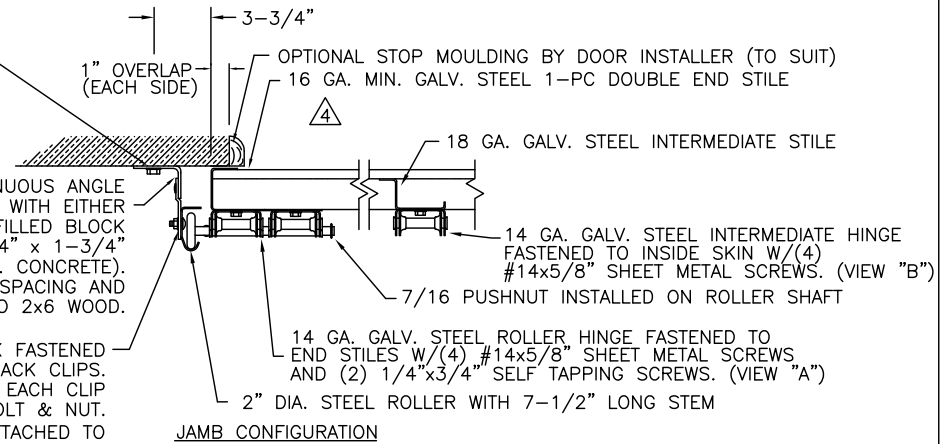
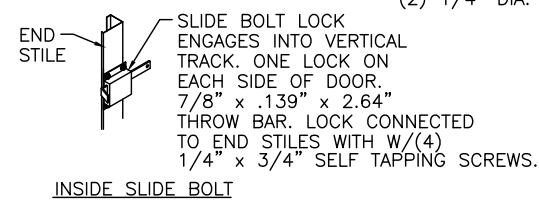
REV	DATE	DESCRIPTION
1	4/2003	MISC. EDITORIAL REVISIONS
2	2/2005	REMOVED RIVET FROM INTER. STILE; SKIN MIN YIELD WAS 42.8 KSI; WAS 2-PC DES
3	7/2005	UPDATED PER M-D COMMENTS
4	9/2005	CORRECTED 'JAMB CONFIGURATION' TO PROPERLY SHOW 1-PC DES
5	1/2012	AFFIRMED COMPLIANCE WITH 2010 FBC



CONTINUOUS ANGLE ATTACHED CAN BE ATTACHED DIRECTLY TO 2x6 SYP (#2 OR BETTER) WOOD JAMBS WITH 5/16x1-5/8" LAG SCREWS. LAG SCREWS POSITIONED AT SAME LOCATIONS AS TRACK CLIPS (I.E. LOCATED AT 3-1/2", 10", THEN 12" TO 14" ON-CENTER THEREAFTER). WOOD JAMBS MOUNTED TO SUPPORTING STRUCTURE WITH WEJ-IT SLEEVE ANCHORS OR ITW TAPCON SCREWS AS SHOWN BELOW.

.100" THICK GALV. STEEL CONTINUOUS ANGLE TRACK FASTENED TO VERTICAL JAMBS WITH EITHER 3/8" x 2-1/2" WEJ-IT SLEEVE ANCHORS (GROUT-FILLED BLOCK OR 3,000 PSI MIN. CONCRETE) OR 1/4" x 1-3/4" EMBED ITW TAPCON SCREWS (3,000 PSI MIN. CONCRETE). SEE NOTE BELOW FOR ANCHOR SPACING AND FOR INSTALLING ANCHORS THROUGH OR INTO 2x6 WOOD.

2" GALV. STEEL TRACK FASTENED TO 12 GA. GALV. STEEL TRACK CLIPS. TRACK ATTACHED TO EACH CLIP WITH ONE 1/4"x5/8" BOLT & NUT. EACH TRACK CLIP ATTACHED TO CONTINUOUS ANGLE WITH (2) 1/4" DIA. RIVETS PER CLIP.

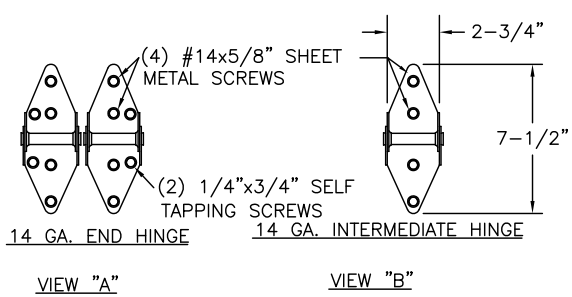


DESIGN LOADS: +50.0 PSF & -56.0 PSF

NOTE: 2x6 WOOD JAMBS ARE NOT REQUIRED, HOWEVER, IF DESIRED ON CONCRETE OR BLOCK WALLS, SLEEVE ANCHORS OR TAPCONS SHOULD BE INCREASED IN LENGTH BY 1-1/2" AND INSTALLED DIRECTLY THROUGH THE ANGLE AND 2x6 WOOD JAMBS INTO THE CONCRETE OR BLOCK WALLS. ANCHORS CAN BE (BUT NOT REQUIRED TO BE) COUNTERSUNK TO PROVIDE A FLUSH MOUNTING SURFACE. CONTINUOUS ANGLE TRACK CAN BE ANCHORED DIRECTLY TO GROUT REINFORCED BLOCK WALL OR 3,000 PSI MIN. CONCRETE COLUMN.

BLOCK CELLS SHALL BE FILLED WITH CONCRETE AND REINFORCED WITH CONTINUOUS #5 BAR EXTENDING INTO THE FOOTING AND INTO TIE BEAMS. ANCHORS CAN BE 3/8" x 2-1/2" WEJ-IT SLEEVE ANCHORS (GROUT-FILLED BLOCK OR 3,000 PSI MIN. CONCRETE WITH 3-3/4" MIN. EDGE DISTANCE) OR 1/4" x 1-3/4" EMBED ITW TAPCONS 3,000 PSI MIN. CONCRETE). ANCHORS POSITIONED AT SAME LOCATIONS AS TRACK CLIPS (I.E. ANCHORS LOCATED STARTING FROM BOTTOM AT 3-1/2", 10", THEN 12" TO 14" ON-CENTER THEREAFTER).

THIS PRODUCT CONFORMS TO THE REQUIREMENTS OF THE 2007 AND 2010 FBC.



DESIGN ENGINEER
 MARK W. WESTERFIELD, P.E.
 MECHANICAL ENGINEERING
 FLORIDA REGISTRATION No. 48495

THE SUPPORTING STRUCTURAL ELEMENTS ARE TO BE DESIGNED BY THE BUILDING ARCHITECT OR ENGINEER OF RECORD FOR THE LOADS SHOWN ON THIS DRAWING.



CLOPAY BUILDING PRODUCTS COMPANY
 8585 DUKE BLVD.
 MASON, OH 45040
 (513) 770 - 4800

SCALE:	WINDLOAD RATING	MAXIMUM DOOR SIZE:
DATE: 11/13/02	W8	12'2"W x 18'0"H
DRAWN BY: RJK	DESCRIPTION:	
CHECKED BY: MWW	M/N 524/520/C4ST/C0ST/224	
	DRAWING NUMBER:	REV:
	B 102645	MD 5