

16'-2" WIDE (MAX) X 18'-0" HIGH (MAX)

24GA EXTERIOR SKIN

NON-INSULATED MODELS:  
 MODELS: CLOPAY - 524W1  
 HOLMES - 224W1  
 IDEAL - C4STW1  
 VINYL BACKED INSULATION MODELS:  
 MODELS: CLOPAY - 524WV1  
 IDEAL - C4SVW1  
 STEEL BACKED INSULATED MODELS:  
 MODELS: CLOPAY - 524SW1  
 HOLMES - 224SW1  
 IDEAL - C4SSW1

20GA EXTERIOR SKIN (RIBBED DOORS)

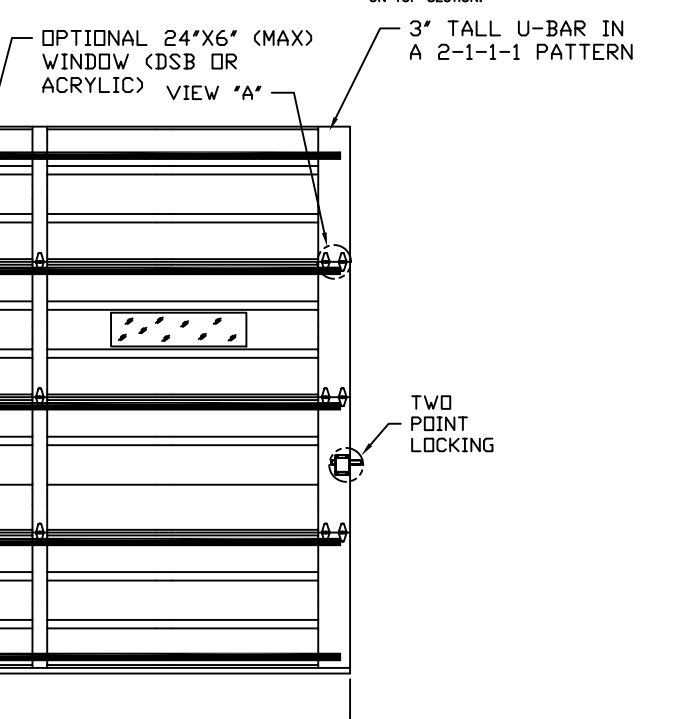
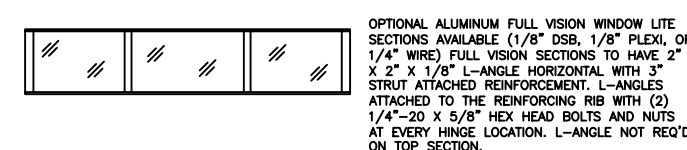
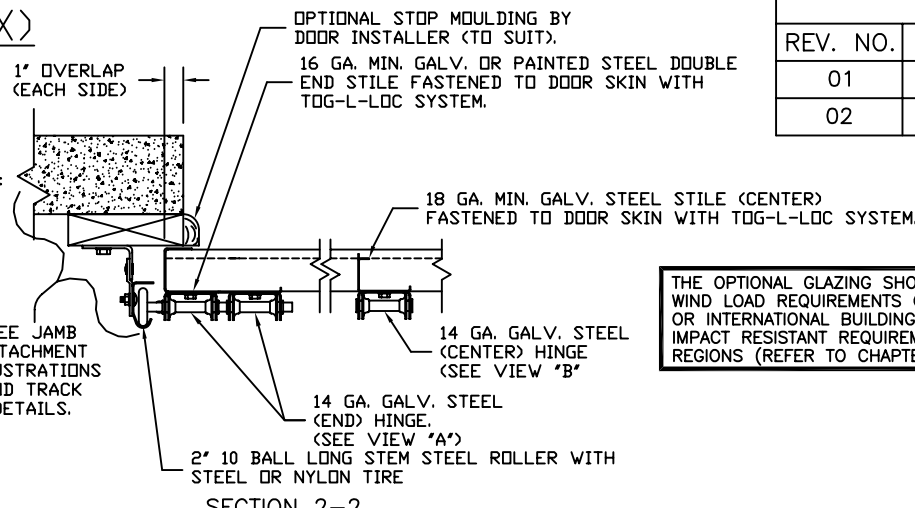
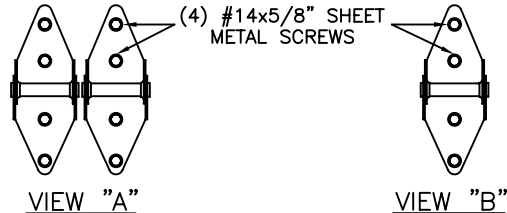
NON-INSULATED MODELS:  
 MODELS: CLOPAY - 520W1  
 IDEAL - C0STW1  
 STEEL BACKED INSULATED MODELS:  
 MODELS: CLOPAY - 520SW1  
 IDEAL - C0SSW1

20GA EXTERIOR SKIN (FLUSH DOORS)

NON-INSULATED MODELS:  
 MODELS: IDEAL - C1STW1  
 STEEL BACKED INSULATED MODELS:  
 MODELS: IDEAL - C1SSW1

NOTE: ALL STEEL BACKED INSULATED DOORS COME WITH EITHER 31GA OR 24GA STEEL BACKER

| DOOR HEIGHT 'A'    | NUMBER OF SECTIONS |
|--------------------|--------------------|
| 8'-0"              | 4                  |
| 8'-3" THRU 10'-0"  | 5                  |
| 10'-3" THRU 12'-0" | 6                  |
| 12'-3" THRU 14'-0" | 7                  |
| 14'-3" THRU 16'-0" | 8                  |
| 16'-3" THRU 18'-0" | 9                  |

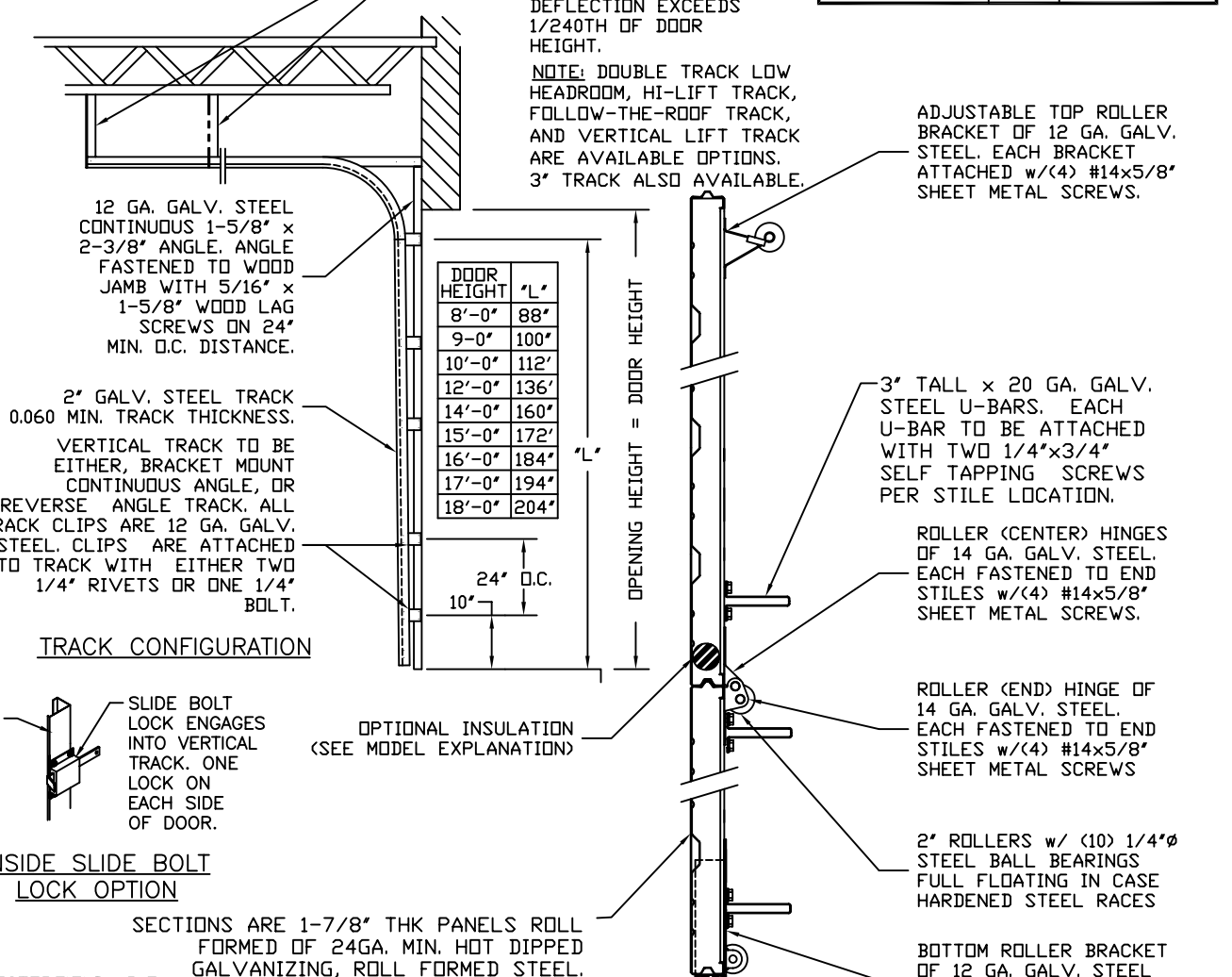


| REVISIONS |       |          |         |        |                                |
|-----------|-------|----------|---------|--------|--------------------------------|
| REV. NO.  | ZONE: | DATE:    | ECN NO. | APPVD: | DESCRIPTION                    |
| 01        | -     | 12/19/07 | ER1165  | SH     | ADDED IDEAL M/N'S              |
| 02        | -     | 01/31/08 | -       | SH     | CHANGED TRACK BRACKET LOCATION |

THE OPTIONAL GLAZING SHOWN ON THIS DRAWING MEETS THE WIND LOAD REQUIREMENTS OF THE FLORIDA BUILDING CODE OR INTERNATIONAL BUILDING CODE BUT DOES NOT MEET THE IMPACT RESISTANT REQUIREMENT FOR WINDBORNE DEBRIS REGIONS (REFER TO CHAPTER 16 FBC / IBC).

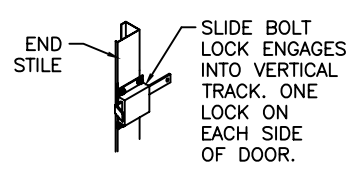
THIS DOOR MEETS OR EXCEEDS THE DESIGN LOADS FOR THE WIND SPEEDS LISTED BELOW ACCORDING TO THE INTERNATIONAL BUILDING CODE FOR THE FOLLOWING CONDITIONS: 1) ENCLOSED BUILDING, 2) DOOR HAS 2' OF WIDTH IN BUILDING'S END ZONE, 3) IMPORTANCE FACTOR OF 1.0, 4) ANY ROOF SLOPE, AND 5) 50% SAFETY FACTOR.

|                  |      |
|------------------|------|
| WIND SPEED (MPH) | 90   |
| EXPOSURE LEVEL   | B    |
| MEAN ROOF HEIGHT | ≤30' |

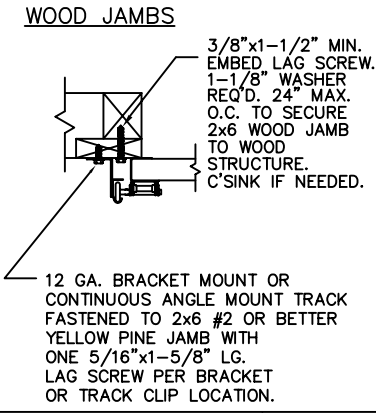
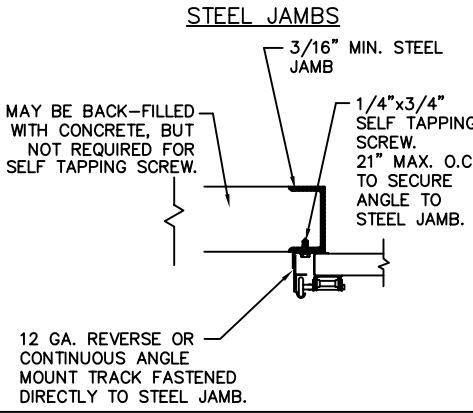
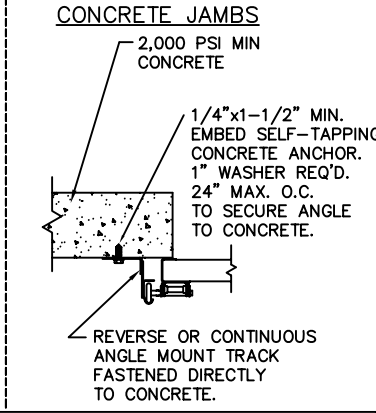
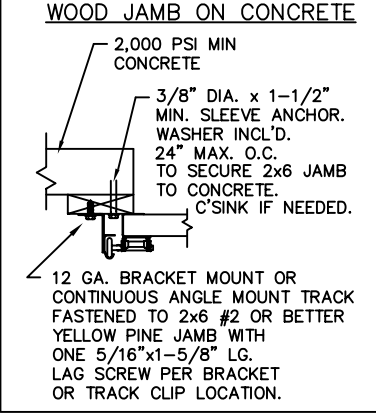


| DOOR HEIGHT 'L' | 'L'  |
|-----------------|------|
| 8'-0"           | 88"  |
| 9'-0"           | 100" |
| 10'-0"          | 112" |
| 12'-0"          | 136" |
| 14'-0"          | 160" |
| 15'-0"          | 172" |
| 16'-0"          | 184" |
| 17'-0"          | 194" |
| 18'-0"          | 204" |

TRACK CONFIGURATION



ANCHOR NOTE: FIRST (BOTTOM) ANCHOR STARTING AT NO MORE THAN HALF OF THE MAXIMUM ON-CENTER DISTANCE. HIGHEST ANCHOR INSTALLED AT LEAST AS HIGH AS THE DOOR OPENING.



MARK WESTERFIELD, P.E.  
 FLORIDA P.E. #48495,  
 NC P.E. #23832, TEXAS P.E. #91513

THE DESIGN OF THE SUPPORTING STRUCTURAL ELEMENTS IS THE RESPONSIBILITY OF THE BUILDING ENGINEER OR ARCHITECT OF RECORD.

Unless Stated Otherwise TOLERANCES are

|         |         |
|---------|---------|
| .0      | = ±.031 |
| .00     | = ±.015 |
| .000    | = ±.005 |
| .0000   | = ±.001 |
| Degrees | = ±1/2° |

Third Angle Projection

Unless Stated Otherwise DIMENSIONS ARE IN INCHES.

DESIGN LOADS: +13.5 & -13.5 P.S.F.  
 TEST LOADS +20 & -20 P.S.F.

PART NO.: N/A

CLOPAY WINDLOAD RATING  
**W1**

DESCRIPTION: COMMERCIAL RIBBED DOOR, +/- 13.5 PSF DESIGN LOAD

DRAWN BY: JJT DATE: 06/22/07 SCALE: NTS DWG. B  
 CHECKED BY: SH DATE: 06/23/07 SHEET 1 OF 1

DWG. NO.: 103056