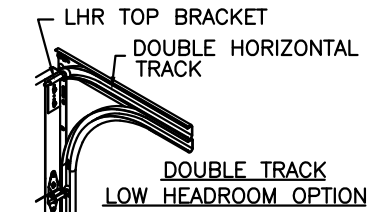
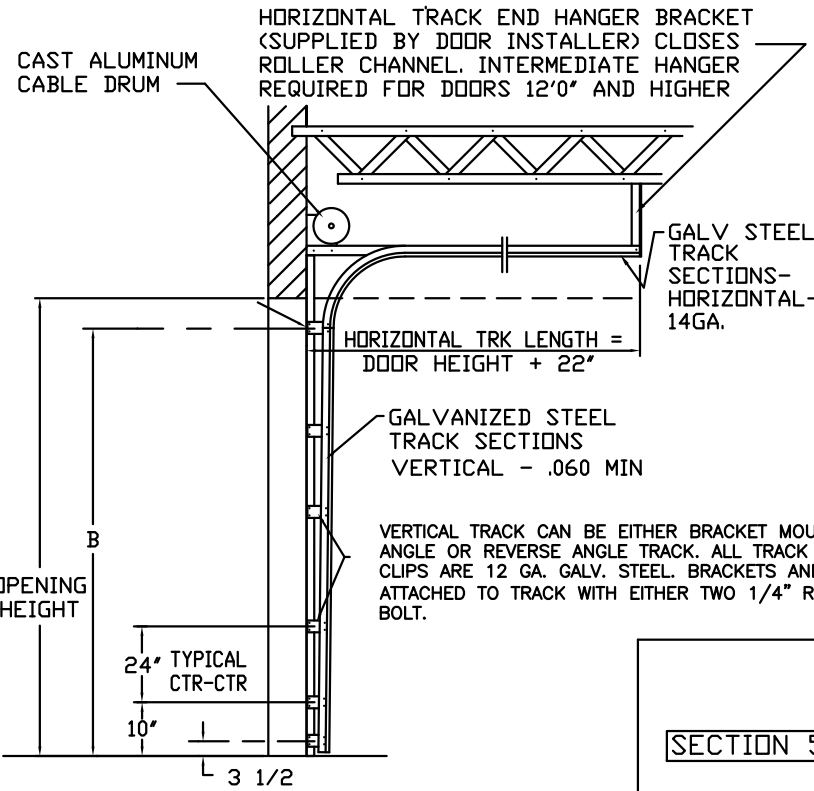


CLOPAY MODEL 902, 903 / IDEAL MODEL C2AL, C3AL MAX 12'-2" WIDE 18' HIGH

THE OPTIONAL GLAZING SHOWN ON THIS DRAWING MEETS THE WIND LOAD REQUIREMENTS OF THE FLORIDA BUILDING CODE OR INTERNATIONAL BUILDING CODE BUT DOES NOT MEET THE IMPACT RESISTANT REQUIREMENT FOR WINDBORNE DEBRIS REGIONS (REFER TO CHAPTER 16 FBC / IBC).

REV	DATE	DESCRIPTION
01	01/24/05	REVISED BRANDING OF MODELS
02	7/2005	UPDATED CODE REF.
03	10/2005	ADDED ROLLER OPTION
04	11/2008	REVISED JAMB ATTACHMENT AND VERT. TRACK; ADDED MPC.
05	02/2012	UPDATED WINDCODE CHART



MODEL IS MADE OF 6063-T5 ALUMINUM EXTRUSIONS.

WALL THICKNESS:

TOP & BOTTOM RAILS .075

INTER. TOP & BOTTOM RAILS .075

TOP HAS .1 x 1.875" FIN

INTER. TOP RAIL CAP .040

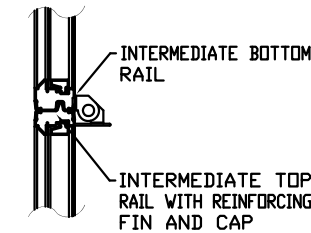
SINGLE & DOUBLE END STILES .075

CENTER STILES .062

HEIGHT 'A'	NUMBER OF SECTIONS	NUMBER OF 2 x 2 x 1/8 ALUM ANGLES
UP TO 8-0	4	5
8-3 THRU 10-0	5	6
10-3 THRU 12-0	6	7
12-3 THRU 14-0	7	8
14-3 THRU 16-0	8	9
16-3 THRU 18-0	9	10

NOTE: DOUBLE TRACK LOW HEADROOM, HI-LIFT TRACK, FOLLOW-THE-ROOF TRACK, AND VERTICAL LIFT TRACK ARE AVAILABLE OPTIONS. 3" TRACK ALSO AVAILABLE.

END STILES FASTENED TO RAILS WITH FULL LENGTH 5/16" ALUMINUM RODS AND FLANGE NUTS



SECTION 2 - 2

CENTER STILES FASTENED TO RAILS WITH FULL LENGTH 5/16" ALUMINUM RODS AND FLANGE NUTS



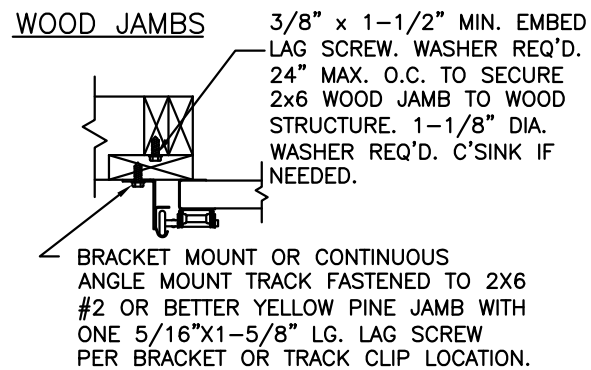
COR-LOVLY CENTER HINGE OF 16 GA. GALV. STEEL, ATTACHED TO INTER. BOTTOM RAIL WITH (2) #14 x 5/8" SHT MTL SCREWS AND TO INTER. TOP RAIL WITH (2) 1/4" - 20 x 1/2" HEX HEAD MACHINE SCREWS & NUTS

ADJUSTABLE TOP ROLLER BRACKET OF 12 GA. GALV. STEEL FASTENED WITH (4) #14 x 5/8" SHT MTL SCREWS

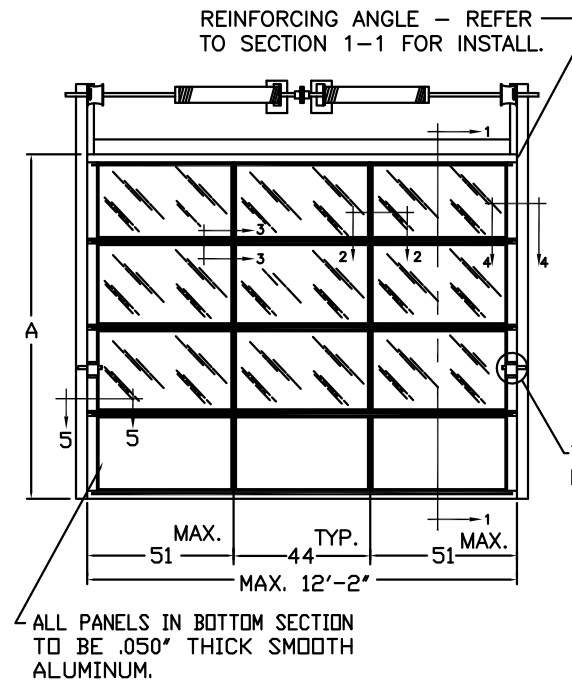
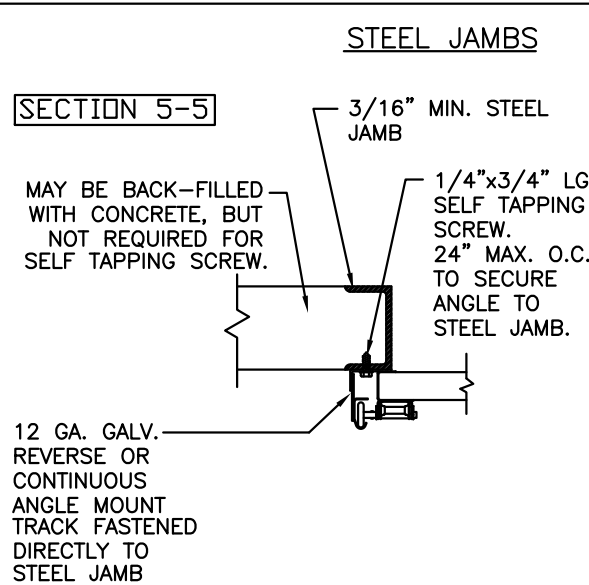
THIS DOOR MEETS OR EXCEEDS THE DESIGN LOADS FOR THE ULTIMATE WIND SPEEDS LISTED BELOW ACCORDING TO THE FLORIDA BUILDING CODE OR THE INTERNATIONAL BUILDING CODE (BASED ON ASCE7-10) FOR THE FOLLOWING CONDITIONS: 1) ENCLOSED BUILDING, 2) DOOR HAS 2' OF WIDTH IN BUILDING'S END ZONE, 3) ANY ROOF SLOPE, AND 4) TESTING IN ACCORDANCE WITH ANSI/DASMA 108. SITE-SPECIFIC CALCULATIONS BY A QUALIFIED DESIGN PROFESSIONAL MAY DIFFER.

ULTIMATE WIND SPEED (MPH)	140	145	150	160	175
EXPOSURE CATEGORY	B, C, D	B, C, D	B, C	B, C	B
MEAN ROOF HEIGHT	25'	15'	25'	15'	30'

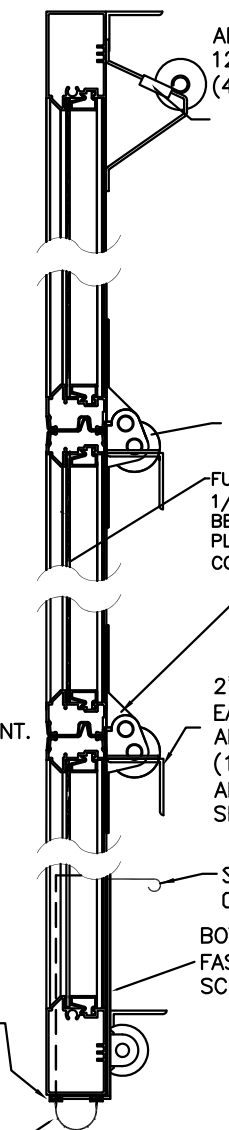
SIDE ELEVATION STANDARD-LIFT TRACK DETAILS



SECTION 5-5

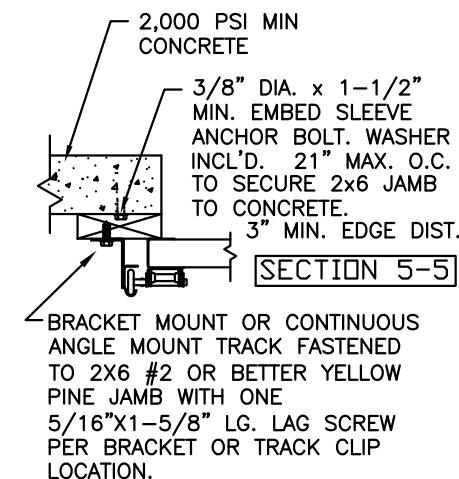


SECTION 1 - 1

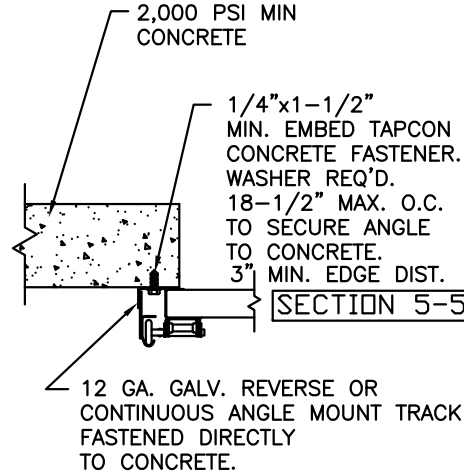


DESIGN LOADS: +32.0 P.S.F. & -32.0 P.S.F.
TEST LOADS: +48.0 P.S.F. & -48.0 P.S.F.

WOOD JAMB ON CONCRETE



CONCRETE JAMBS

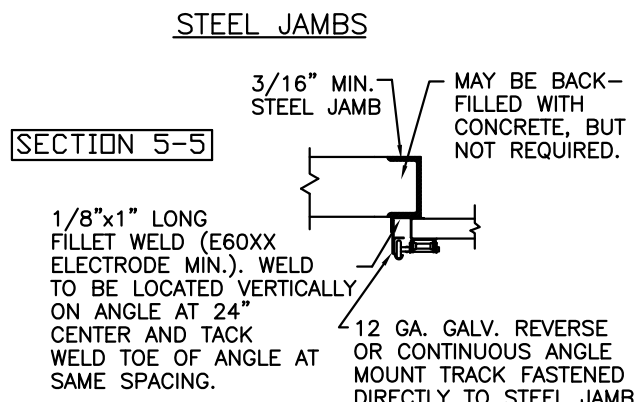


BOTTOM SECTION REINFORCED WITH A TEMPERED ALUMINUM EXTRUSION WITH INTEGRAL RETAINER FOR FLEXIBLE VINYL ASTRAGAL.

ASTRAGAL TO BE 3 1/2" FLEXIBLE VINYL WITH RIBS

DESIGN ENGINEER: MARK WESTERFIELD, P.E.
FLORIDA P.E. #48495, NC P.E. #23832, TEXAS P.E. #91513

THE DESIGN OF THE SUPPORTING STRUCTURAL ELEMENTS IS THE RESPONSIBILITY OF THE BUILDING ENGINEER OR ARCHITECT OF RECORD.



CLOPAY BUILDING PRODUCTS COMPANY
8585 DUKE BLVD.
MASON, OH 45040
(513) 770-4800
CLOPAY CORP.
ALL RIGHTS RESERVED.

MANUFACTURING PRODUCT CODE: MPC: C-AL-1F499	WINDLOAD RATING W5	MANUFACTURED / PURCHASED MAN.
DATE: 1-17-92	DESCRIPTION: M/N 902 DES LOAD +/-32 PSF	
DRAWN BY: LEG	D	DRAWING NUMBER: 103275
CHECKED BY:		VER: IBC