

STANDARD-LIFT TRACK DETAILS

MAX 14'-2" WIDE X 18'-0" HIGH

MODELS AVAILABLE (CLOPAY/ HOLMES/ IDEAL)  
MODELS 524W8, 520W8, 224W8, C4STW8, COSTW8

REVISIONS

REV. NO.	ZONE:	DATE:	ECN NO.	APPVD:	DESCRIPTION
01	-	5/2005	-	-	CODE REFERENCE CHANGES
02	-	12/2008	-	-	ADDED MPC.
03	-	08/2012	-	-	REVISED FOR TDI

NOTE: DOUBLE TRACK HEADROOM, HI-LIFT TRACK, FOLLOW-THE-ROOF TRACK, AND VERTICAL LIFT TRACK ARE AVAILABLE OPTIONS. 3" TRACK ALSO AVAILABLE.

HORIZONTAL TRACK END HANGER BRACKET SUPPLIED BY DOOR INSTALLER

TRACK CONFIGURATION ABOVE THE DOOR OPENING DOES NOT AFFECT THE WIND LOAD RATING.

GALV STEEL TRACK SECTIONS - HORIZONTAL - 14 GA MIN.

1' OVERLAP (EACH SIDE)

OPTIONAL STOP MOULDING BY DOOR INSTALLER (TO SUIT).

16 GA. MIN. GALV. STEEL END STILE FASTENED TO DOOR SKIN WITH TOG-L-LOC SYSTEM AT TOP, BOTTOM AND CENTER.

18 GA. MIN. GALV. STEEL INTERMEDIATE STILE FASTENED TO DOOR SKIN WITH TOG-L-LOC SYSTEM AT TOP, BOTTOM AND EACH MAJOR RIB.

SOUTHERN YELLOW PINE JAMB BY OTHERS

14 GA. GALV. STEEL INTERMEDIATE HINGE. (SEE VIEW 'B')

7/16" PUSHNUT INSTALLED ON ROLLER SHAFT

14 GA. GALV. STEEL (END) HINGE. (SEE VIEW 'A')

ONE 5/16" x 1-5/8" LAG SCREW SPACED AT THE SAME DISTANCES AS THE TRACK BOLTS (I.E. 3-1/2", 10", AND EVERY 12" ALSO TWO LAG SCREWS LOCATED ABOVE VERTICAL/HORIZONTAL TRACK JUNCTION.

2" LONG STEM ROLLERS FEATURE (10) 1/4" DIA. STEEL BALL BEARINGS FULL FLOADING IN CASE HARDENED STEEL RACES

SECTION 2 - 2

SECTION 1 - 1

SECTIONS ARE 1-7/8" THK PANELS ROLL FORMED OF .022" MIN. HOT DIPPED G-40 GALVANIZING, ROLL FORMED STEEL.

THIS DOOR MEETS THE REQUIREMENTS OF THE LARGE MISSILE IMPACT AND CYCLIC TESTING.

THIS DOOR MEETS OR EXCEEDS THE DESIGN LOADS FOR THE WIND SPEEDS LISTED BELOW ACCORDING TO THE FLORIDA BLDG. CODE OR IBC (ASCE7) FOR THE FOLLOWING CONDITIONS: 1) ENCLOSED BUILDING, 2) DOOR HAS 2' OF WIDTH IN BUILDING'S END ZONE, 3) IMPORTANCE FACTOR OF 1.0, 4) ROOF SLOPE LESS THAN 10°, AND 5) 50% SAFETY FACTOR.

WIND SPEED (MPH)	≤ 150
EXPOSURE LEVEL	B or C
MEAN ROOF HEIGHT	30'

3" TALL x 20 GA. GALV. STEEL U-BAR. MIN YIELD STRENGTH 50KSI. ATTACHED ONE AT THE TOP OF EACH SECTION EACH U-BAR ATTACHED WITH (2) 1/4"x3/4" SELF TAPPING SCREWS PER STILE LOCATION.

ADJUSTABLE TOP ROLLER BRACKET OF 12 GA. GALV. STEEL, INSTALLED ON DOOR WITH (4) #14 X 5/8" LG SHEET METAL SCREWS

ONE 4" 14 GA. C-CHANNEL PER DOOR SECTION. (1) 1/4" X 3/4" SELF TAPPING SCREW PER STILE. (SEE VIEW "D")

1-1/4" WIDE X 16 GA. GALV. STRAP. (9) PER DOOR SECTION. EACH STRAP ATTACHED WITH (3) 1/4" X 3/4" SELF TAPPING SCREWS. TWO SCREWS TO DOOR, ONE SCREW TO C-CHANNEL.

END HINGE. SEE DETAILS AT VIEW "A".

DOUBLE END STILE

TONGUE & GROOVE JOINT

MIN. TWO POINT LOCKING REQ'D. EACH SLIDE LOCK ATTACHED WITH (2) 1/4"x3/4" STS.

VIEW "D"  
4" TALL C-CHANNEL  
14 GA. GALV. STEEL  
MIN YIELD STRENGTH 50KSI

BOTTOM ROLLER BRACKET OF 13 GA. MIN. GALV. STEEL, FASTENED WITH (4) #14 X 5/8" LG SHT. MTL. SCREWS

BOTTOM SECTION REINFORCED WITH TEMPERED ALUMINUM EXTRUSION WITH INTEGRAL RETAINER FOR FLEXIBLE VINYL ASTRAGAL

DESIGN LOADS: +50 & -56 P.S.F.  
TEST LOADS: +75 & -84 P.S.F.

MARK WESTERFIELD, P.E.  
FLORIDA P.E. No. 48495,  
NC P.E. #23832, TEXAS P.E. #91513

MANUFACTURING PRODUCT CODE:  
MPC: C-PAN-1E448

Unless Stated Otherwise TOLERANCES are  
.0 = ±.031  
.00 = ±.015  
.000 = ±.005  
.0000 = ±.001  
Degrees = ± 1/2"

THE DESIGN OF THE SUPPORTING STRUCTURAL ELEMENTS IS THE RESPONSIBILITY OF THE BUILDING ENGINEER OR ARCHITECT OF RECORD.

Unless Stated Otherwise DIMENSIONS ARE IN INCHES.

**Glopay**  
Building Products Company

8585 Duke Boulevard  
Mason, OH 45040 USA  
Tel. No. 513-770-4800  
Fax No. 513-770-4853

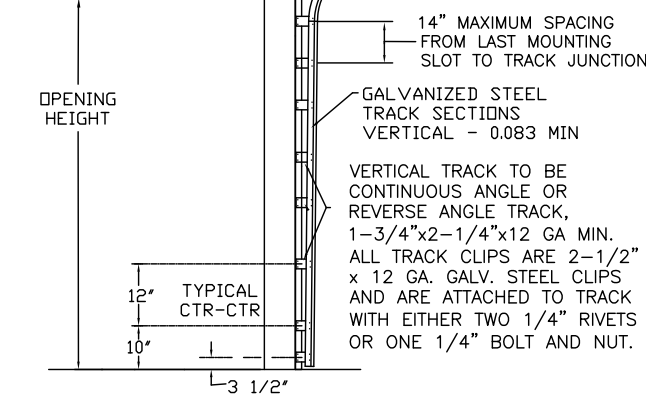
WINDLOAD RATING  
W8

DESCRIPTION: COMMERCIAL RIBBED DOOR, +50/-56 PSF DESIGN LOAD

DRAWN BY: BFA DATE: 09/27/04 SCALE: N/A DWG. SIZE B

CHECKED BY: MWW DATE: 11/02/04 SHEET 1 OF 1

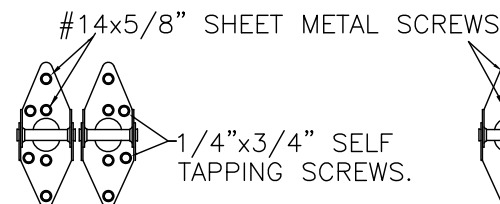
DWG. NO.: 103288 VER: IBC



AVAILABLE IN 3" TAPERED REVERSE ANGLE TRACK. TRACK BOLT AND LAG SCREW SPACING 3-1/2", 10" AND EVERY 12" AS NOTED ABOVE.

DOOR HEIGHT 'A'	NUMBER OF SECTIONS
8'-0"	4
8'-3" THRU 10'-0"	5
10'-3" THRU 12'-0"	6
12'-3" THRU 14'-0"	7
14'-3" THRU 16'-0"	8
16'-3" THRU 18'-0"	9

MAX. SECTION HEIGHT: 24"



VIEW "A"

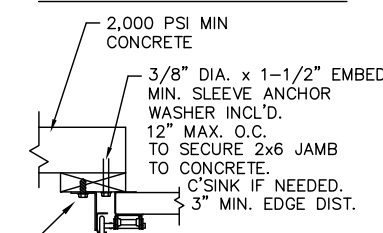
14 GA. DOUBLE END HINGES  
ATTACH ON EACH HINGE AS SHOWN:  
(4) #14 X 5/8" LG. SHT. MTL. SCREWS AND  
(2) 1/4"x3/4" SELF-TAPPING SCREWS.

VIEW "B"

14 GA. INTERMEDIATE HINGE  
ATTACH ON EACH HINGE AS SHOWN:  
(4) 1/4" X 5/8" SHEET METAL SCREWS

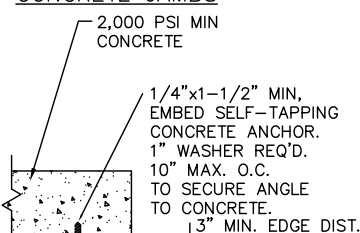
ANCHOR NOTE: FIRST (BOTTOM) ANCHOR STARTING AT NO MORE THAN HALF OF THE MAXIMUM ON-CENTER DISTANCE. HIGHEST ANCHOR INSTALLED AT LEAST AS HIGH AS THE DOOR OPENING.

WOOD JAMB ON CONCRETE



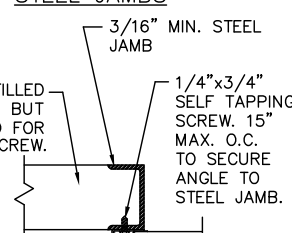
BRACKET MOUNT OR CONTINUOUS ANGLE MOUNT TRACK FASTENED TO 2x6 #2 OR BETTER YELLOW PINE JAMB WITH ONE 5/16"x1-5/8" LG. LAG SCREW PER BRACKET OR TRACK CLIP LOCATION.

CONCRETE JAMBS



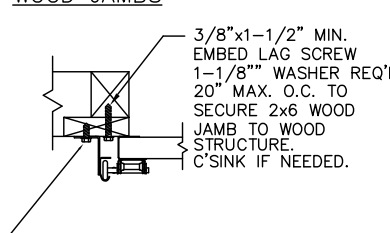
REVERSE OR CONTINUOUS ANGLE MOUNT TRACK FASTENED DIRECTLY TO CONCRETE.

STEEL JAMBS



REVERSE OR CONTINUOUS ANGLE MOUNT TRACK FASTENED DIRECTLY TO STEEL JAMB.

WOOD JAMBS

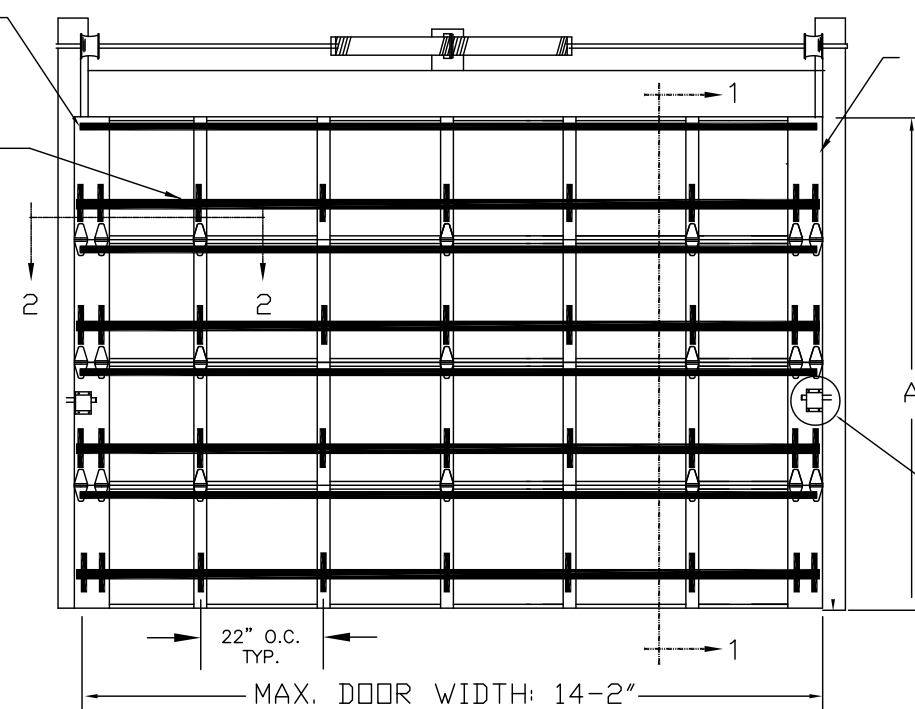


BRACKET MOUNT OR CONTINUOUS ANGLE MOUNT TRACK FASTENED TO 2x6 #2 OR BETTER YELLOW PINE JAMB WITH ONE 5/16"x1-5/8" LG. LAG SCREW PER BRACKET OR TRACK CLIP LOCATION.

U-BAR. SEE SECTION 1-1 FOR MOUNTING DETAILS AND SPECIFICATION.

C-CHANNEL. SEE SECTION 1-1 FOR MOUNTING DETAILS AND SPECIFICATIONS.

MAJOR RIBS NOT SHOWN FOR CLARITY



22" O.C. TYP.

MAX. DOOR WIDTH: 14'-2"