

4

3

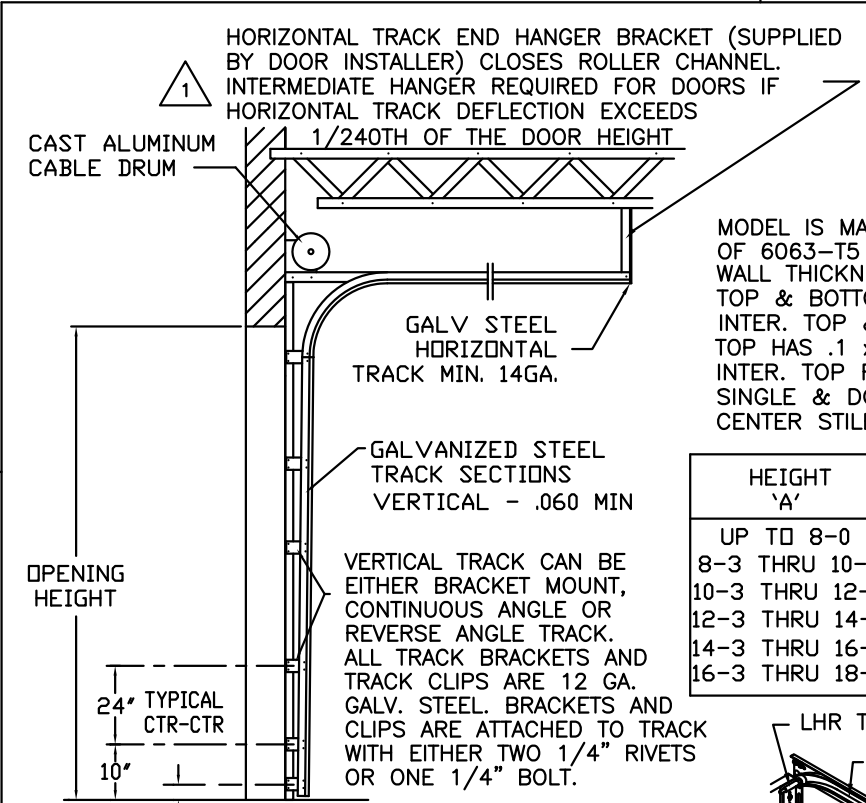
2

1

MODEL 902 AND C2AL
MAX 16'-2" WIDE X 18'-0" HIGH

REVISIONS					
REV. NO.	ZONE:	DATE:	ECN NO.	APPVD:	DESCRIPTION
01	-	11/2008	-	-	ADDED MPC; UPDATED JAMP ATTACHMENT.
02	-	02/2012	-	-	UPDATED WINDCODE CHART

THE OPTIONAL GLAZING SHOWN ON THIS DRAWING MEETS THE WIND LOAD REQUIREMENTS OF THE FLORIDA BUILDING CODE OR INTERNATIONAL BUILDING CODE BUT DOES NOT MEET THE IMPACT RESISTANT REQUIREMENT FOR WINDBORNE DEBRIS REGIONS (FBC SECT. 1606.1.4; IBC SECT. 1609.1.4).

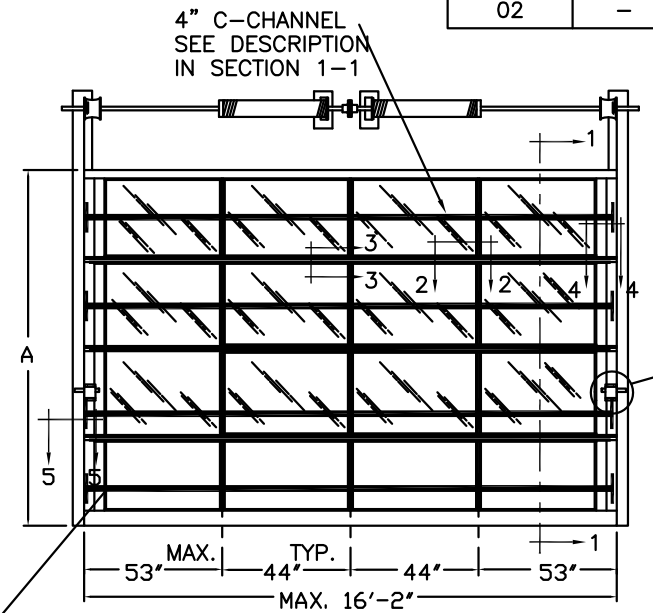


MODEL IS MADE OF 6063-T5 ALUMINUM EXTRUSIONS.

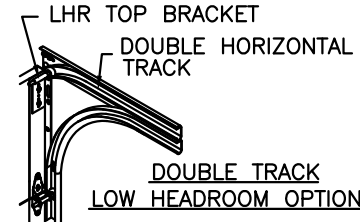
WALL THICKNESS:

TOP & BOTTOM RAILS	.075
INTER. TOP & BOTTOM RAILS	.075
TOP HAS .1 x 1.875" FIN	
INTER. TOP RAIL CAP	.040
SINGLE & DOUBLE END STILES	.075
CENTER STILES	.062

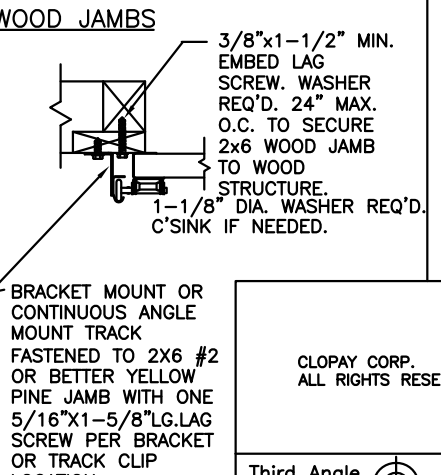
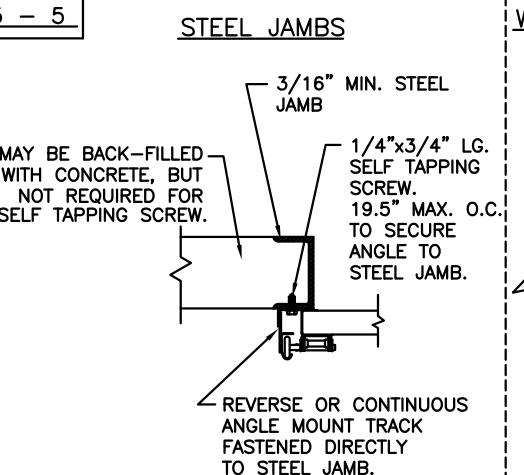
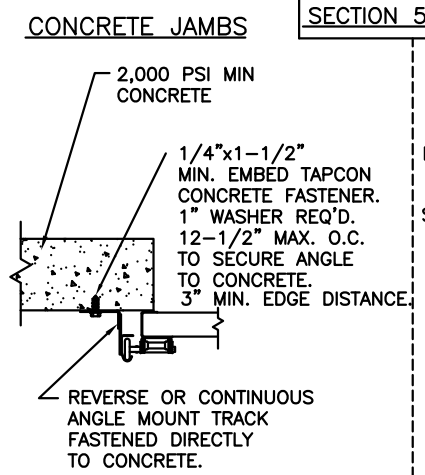
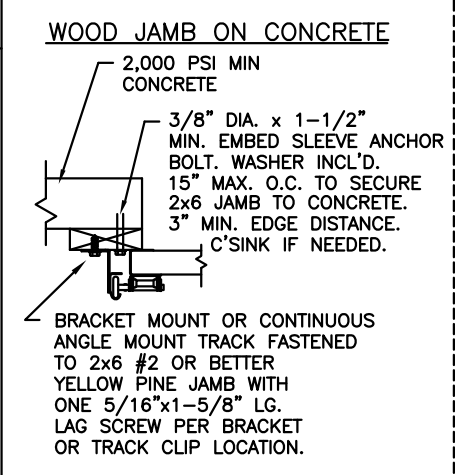
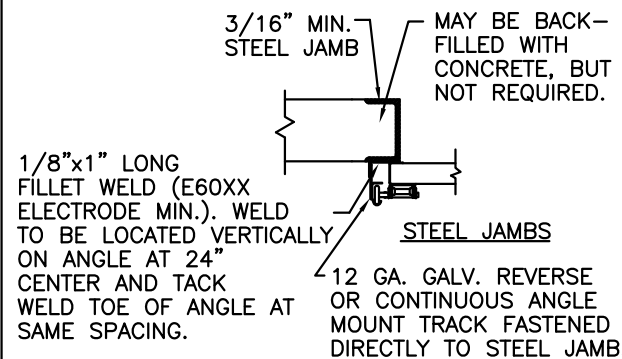
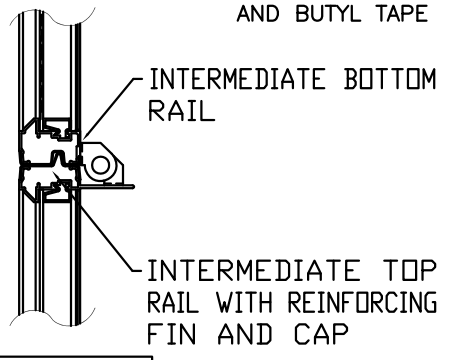
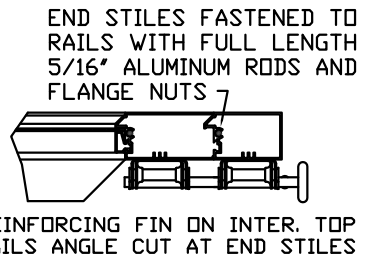
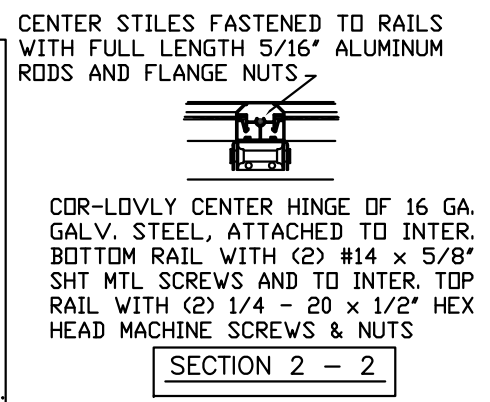
HEIGHT 'A'	NUMBER OF SECTIONS	NUMBER OF 4" 16 GAGE C-CHANNEL
UP TO 8-0	4	4
8-3 THRU 10-0	5	5
10-3 THRU 12-0	6	6
12-3 THRU 14-0	7	7
14-3 THRU 16-0	8	8
16-3 THRU 18-0	9	9



SIDE ELEVATION
STANDARD-LIFT TRACK DETAILS**
**HI-LIFT, VERTICAL LIFT, LOW HEADROOM TRACK AVAILABLE.

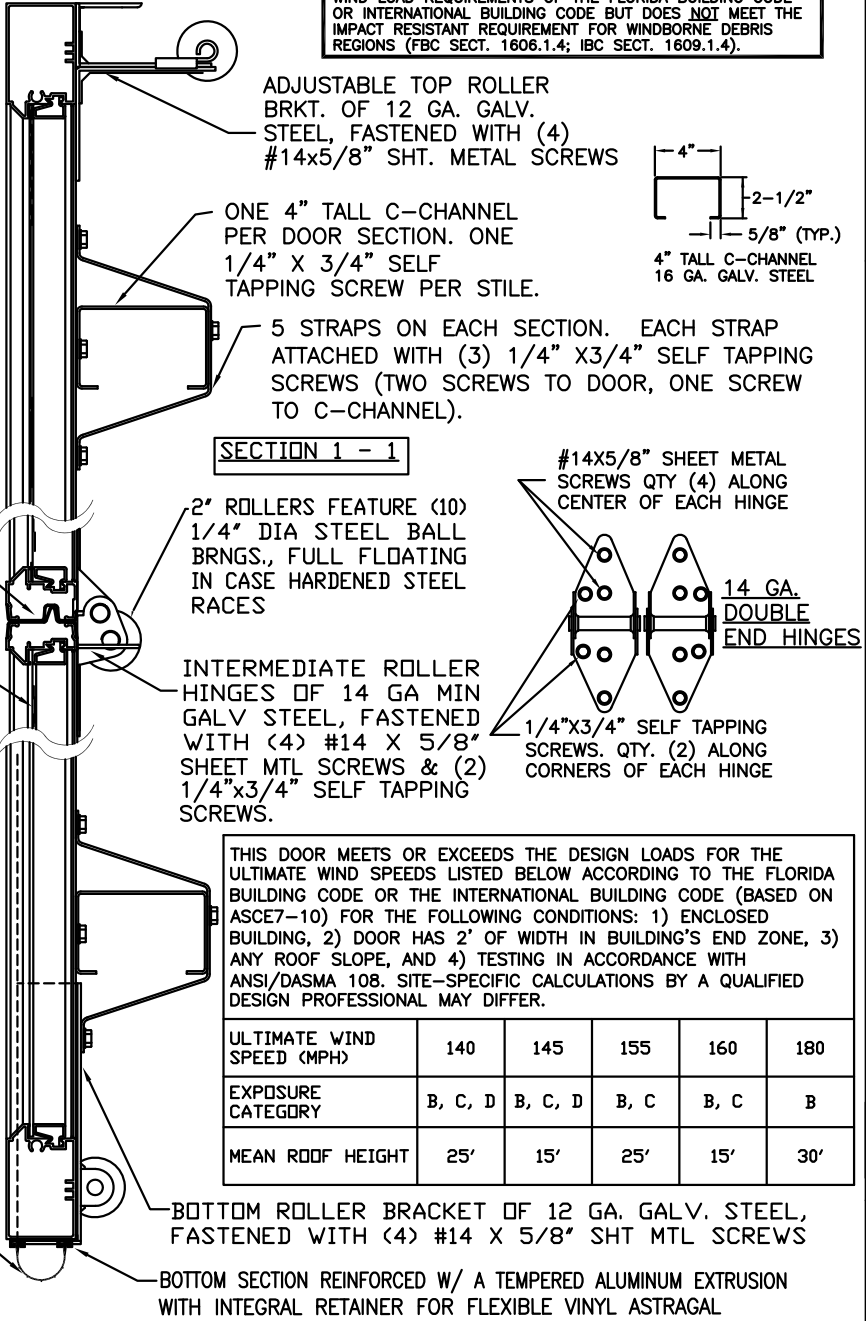


NOTE: DOUBLE TRACK LOW HEADROOM, HI-LIFT TRACK, FOLLOW-THE-ROOF TRACK, AND VERTICAL LIFT TRACK ARE AVAILABLE OPTIONS. 3" TRACK ALSO AVAILABLE.



ASTRAGAL TO BE FLEXIBLE VINYL.

THE DESIGN OF THE SUPPORTING STRUCTURAL ELEMENTS IS THE RESPONSIBILITY OF THE BUILDING ENGINEER OR ARCHITECT OF RECORD.



ULTIMATE WIND SPEED (MPH)	140	145	155	160	180
EXPOSURE CATEGORY	B, C, D	B, C, D	B, C	B, C	B
MEAN ROOF HEIGHT	25'	15'	25'	15'	30'

DESIGN ENGINEER: MARK WESTERFIELD, P.E.
FLORIDA P.E. #48495, NC P.E. #23832, TEXAS P.E. #91513
DESIGN LOADS: +32 & -32 P.S.F.
TEST LOADS +48 & -48 P.S.F.

CLOPAY CORP. ALL RIGHTS RESERVED.

Third Angle Projection

Unless Stated Otherwise TOLERANCES are

.0	= ±.031
.00	= ±.015
.000	= ±.005
.0000	= ±.001
Degrees	= ±1/2'

Unless Stated Otherwise DIMENSIONS ARE IN INCHES.

Clopay Building Products Company
8585 Duke Boulevard
Mason, OH 45040 USA
Tel. No. 513-770-4800
Fax No. 513-770-4853

WINDLOAD RATING
W5

DESCRIPTION: M/N 902 / C2AL +32PSF DES LOAD

DRAWN BY: R.J.K.	DATE: 12/8/99	SCALE: N/A	DWG. B
CHECKED BY: -	DATE: -	SHEET 1 OF 1	SIZE B

DWG. NO.: 103294