

CLOPAY MODEL 902, 903
IDEAL MODEL C2AL, C3AL

REVISIONS

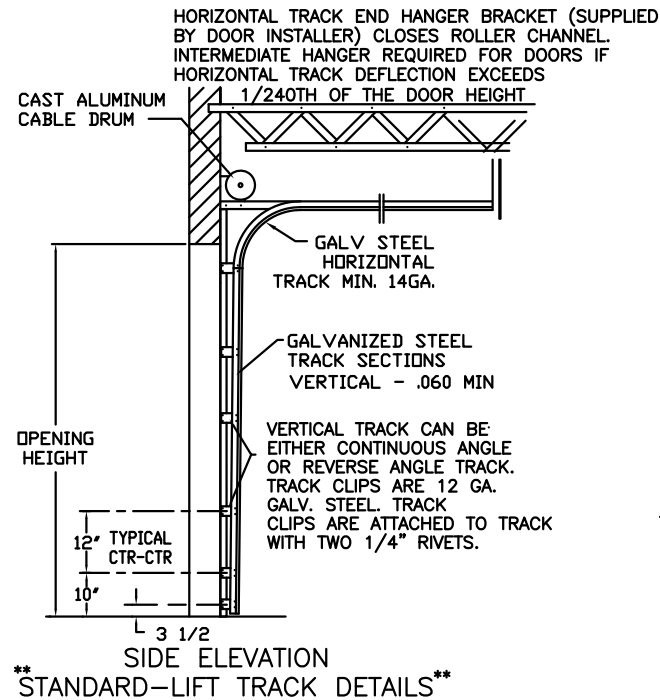
REV. NO.	ZONE:	DATE:	ECN NO.	APPVD:	DESCRIPTION
02	-	10/2005	-	SH	ADDED ROLLER OPTION
03	-	11/2008	-	SH	ADDED MPC.
04	-	02/2012	-	SH	UPDATED WINDCODE CHART

D

C

B

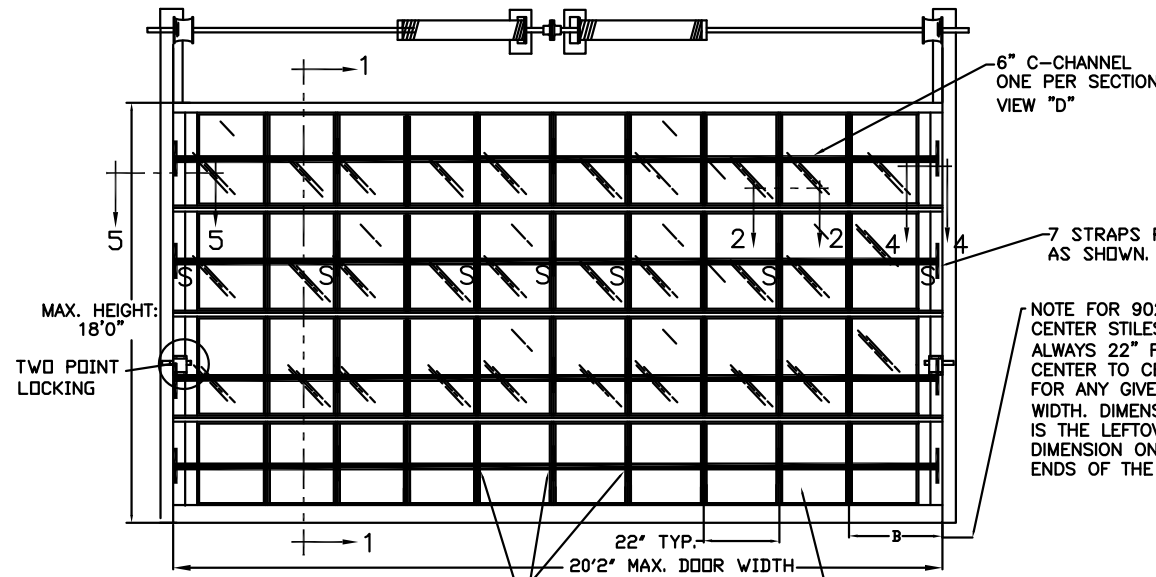
A



DOOR IS MADE OF 6063-T5 ALUMINUM EXTRUSIONS. WALL THICKNESS: TOP & BOTTOM RAILS .075 INTER. TOP & BOTTOM RAILS .075 TOP HAS .1 x 1.875\" FIN INTER. TOP RAIL CAP .040 SINGLE & DOUBLE END STILES .075 CENTER STILES .062

**NOTE: DOUBLE TRACK LOW HEADROOM, HI-LIFT TRACK, FOLLOW-THE-ROOF TRACK, AND VERTICAL LIFT TRACK ARE AVAILABLE OPTIONS. 3\" TRACK ALSO AVAILABLE.

THE OPTIONAL GLAZING SHOWN ON THIS DRAWING MEETS THE WIND LOAD REQUIREMENTS OF THE FLORIDA BUILDING CODE OR INTERNATIONAL BUILDING CODE BUT DOES NOT MEET THE IMPACT RESISTANT REQUIREMENT FOR WINDBORNE DEBRIS REGIONS (REFER TO CHAPTER 16 FBC / IBC).



CENTER STILES FASTENED TO RAILS WITH FULL LENGTH 5/16\" ALUMINUM RODS AND FLANGE NUTS

END STILES FASTENED TO RAILS WITH FULL LENGTH 5/16\" ALUMINUM RODS AND FLANGE NUTS

COR-LDOLVY CENTER HINGE OF 16 GA. GALV. STEEL, ATTACHED TO INTER. BOTTOM RAIL WITH (2) #14 x 5/8\" SHT MTL SCREWS AND TO INTER. TOP RAIL WITH (2) 1/4 - 20 x 1/2\" HEX HEAD MACHINE SCREWS & NUTS

REINFORCING FIN ON INTER. TOP RAILS ANGLE CUT AT END STILES

AT THE CENTER OF EACH C-CHANNEL ATTACH THREE 6\"x2-1/4\"x12 GA. STEEL PLATE TO THE UNDERSIDE OF THE C-CHANNEL WITH (4) 1/4\"x3/4\" SELF TAPPING SCREWS.

NOTE FOR 902/C2AL: CENTER STILES ARE ALWAYS 22\" FROM CENTER TO CENTER FOR ANY GIVEN DOOR WIDTH. DIMENSION 'B' IS THE LEFTOVER DIMENSION ON BOTH ENDS OF THE DOOR.

7 STRAPS PER SECTION AS SHOWN.

6\" C-CHANNEL ONE PER SECTION VIEW \"D\"

MEETING RAILS FORM A TONGUE AND GROOVE JOINT

FULL-VISION SECTIONS TO BE 1/8\" DSB GLASS OR 1/8\" ACRYLIC, HELD IN PLACE WITH SNAP-IN GLAZING BEAD AND HOT MELT. OPTIONAL ACRYLIC GLAZING IS PLASKOLITE OPTIX, AN APPROVED CLASS CC2 PLASTIC IN COMPLIANCE WITH FBC 2604 / IBC 2606.

12 GA. GALV. STEEL TOP ROLLER BRACKET. EACH BRACKET ATTACHED W/(4) #14x5/8\" SHEET METAL SCREWS. ADJUSTABLE SLIDE ATTACHED TO TOP BRACKET WITH QTY (2) 1/4\" x 1/2\" BOLTS & NUTS PER BRACKET.

STRAPS ATTACHED WITH (3) 1/4\" x3/4\" SELF TAPPING SCREWS (TWO SCREWS TO DOOR, ONE SCREW TO C-CHANNEL). SEE REAR ELEVATION FOR PLACEMENT.

6\"x2-1/4\"x12 GA. GALV. STEEL PLATE. THREE PER C-CHANNEL. SEE VIEW \"E\".

DOUBLE END ROLLER HINGES OF 14 GA MIN GALV STEEL, FASTENED WITH (4) #14 x 5/8\" SHEET MTL SCREWS & (2) 1/4\"x3/4\" SELF TAPPING SCREWS.

14 GA. DOUBLE END HINGES

1/4\"x3/4\" SELF TAPPING SCREWS. QTY. (2) ALONG CORNERS OF EACH HINGE

BOTTOM ROLLER BRACKET OF 12 GA. GALV. STEEL, FASTENED WITH (4) #14 x 5/8\" SHT MTL SCREWS

2\" 10 BALL LONG STEM STEEL ROLLER WITH STEEL OR NYLON TIRE

BOTTOM SECTION REINFORCED WITH A TEMPERED ALUMINUM EXTRUSION WITH INTEGRAL RETAINER FOR FLEXIBLE VINYL ASTRAGAL

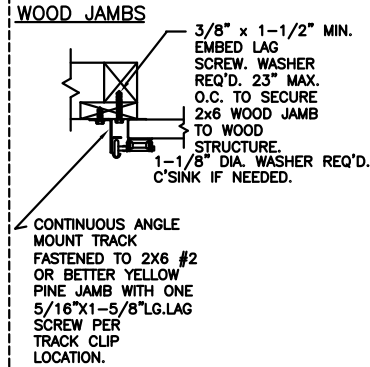
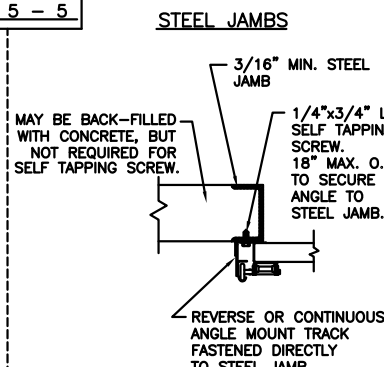
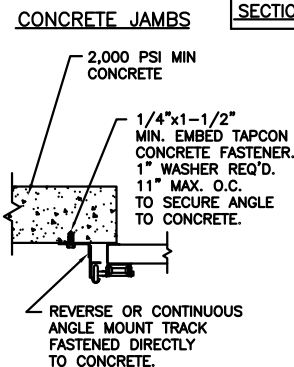
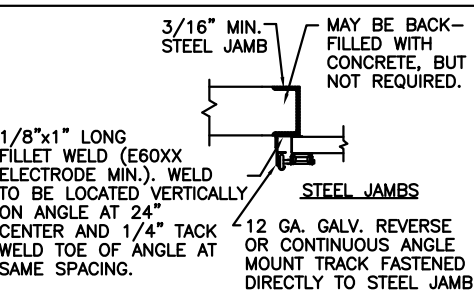
VIEW \"E\" 6\" C-CHANNEL

THIS DOOR MEETS OR EXCEEDS THE DESIGN LOADS FOR THE ULTIMATE WIND SPEEDS LISTED BELOW ACCORDING TO THE FLORIDA BUILDING CODE OR THE INTERNATIONAL BUILDING CODE (BASED ON ASCE7-10) FOR THE FOLLOWING CONDITIONS: 1) ENCLOSED BUILDING, 2) DOOR HAS 2' OF WIDTH IN BUILDING'S END ZONE, 3) ANY ROOF SLOPE, AND 4) TESTING IN ACCORDANCE WITH ANSI/DASMA 108. SITE-SPECIFIC CALCULATIONS BY A QUALIFIED DESIGN PROFESSIONAL MAY DIFFER.

ULTIMATE WIND SPEED (MPH)	135	145	150	155	175
EXPOSURE CATEGORY	B, C, D	B, C, D	B, C	B, C	B
MEAN ROOF HEIGHT	25'	15'	25'	15'	30'

DESIGN ENGINEER: MARK WESTERFIELD, P.E.
FLORIDA P.E. #48495, NC P.E. #23832, TEXAS P.E. #91513
DESIGN LOADS: +30 & -30 P.S.F.
TEST LOADS +45 & -45 P.S.F.

MANUFACTURING PRODUCT CODE:
MPC: C-AL-1F499



WOOD JAMB ON CONCRETE
2,000 PSI MIN CONCRETE
3/8\" DIA. x 1-1/2\" MIN. EMBED SLEEVE ANCHOR BOLT. WASHER INCL'D. 13\" MAX. O.C. TO SECURE 2x6 JAMB TO CONCRETE. C'SINK IF NEEDED.
CONTINUOUS ANGLE MOUNT TRACK FASTENED TO 2x6 #2 OR BETTER YELLOW PINE JAMB WITH ONE 5/16\"x1-5/8\" LG. LAG SCREW PER BRACKET OR TRACK CLIP LOCATION.

CONCRETE JAMBS
2,000 PSI MIN CONCRETE
1/4\"x1-1/2\" MIN. EMBED TAPCON CONCRETE FASTENER. 1\" WASHER REQ'D. 11\" MAX. O.C. TO SECURE ANGLE TO CONCRETE.
REVERSE OR CONTINUOUS ANGLE MOUNT TRACK FASTENED DIRECTLY TO CONCRETE.

STEEL JAMBS
3/16\" MIN. STEEL JAMB
MAY BE BACK-FILLED WITH CONCRETE, BUT NOT REQUIRED FOR SELF TAPPING SCREW.
1/4\"x3/4\" LG. SELF TAPPING SCREW. 18\" MAX. O.C. TO SECURE ANGLE TO STEEL JAMB.
REVERSE OR CONTINUOUS ANGLE MOUNT TRACK FASTENED DIRECTLY TO STEEL JAMB.

WOOD JAMBS
3/8\" x 1-1/2\" MIN. EMBED LAG SCREW. WASHER REQ'D. 23\" MAX. O.C. TO SECURE 2x6 WOOD JAMB TO WOOD STRUCTURE.
1-1/8\" DIA. WASHER REQ'D. C'SINK IF NEEDED.
CONTINUOUS ANGLE MOUNT TRACK FASTENED TO 2x6 #2 OR BETTER YELLOW PINE JAMB WITH ONE 5/16\"x1-5/8\" LG. LAG SCREW PER TRACK CLIP LOCATION.

CLOPAY CORP. ALL RIGHTS RESERVED.

Unless Stated Otherwise TOLERANCES are
.0 = ±.031
.00 = ±.015
.000 = ±.005
.0000 = ±.001
Degrees = ±1/2'

Unless Stated Otherwise DIMENSIONS ARE IN INCHES.

Third Angle Projection

Clopay Building Products Company
8585 Duke Boulevard
Mason, OH 45040 USA
Tel. No. 513-770-4800
Fax No. 513-770-4853

CLOPAY WINDLOAD RATING
W5

DESCRIPTION: M/N 902, C2AL 20'2\" WIDE DES. +30/-30 PSF

DRAWN BY: RJK DATE: 3/24/04 SCALE: NONE DWG. B
CHECKED BY: MWW DATE: 4/1/04 SHEET 1 OF 1 SIZE B

DWG. NO.: 103296 VER: IBC