

UP TO 22'-2" WIDE X 18'-0" HIGH

MODELS AVAILABLE (CLOPAY/ HOLMES/ IDEAL)
MODELS 524, 520/ 224/ C4ST, C0ST
INSULATED MODELS 524S, 520S, 524V/ 224S/ C4SS, C0SS, C4SV

REVISIONS

Table with 6 columns: REV. NO., ZONE, DATE, ECN NO., APPVD, DESCRIPTION. Contains 3 revision entries.

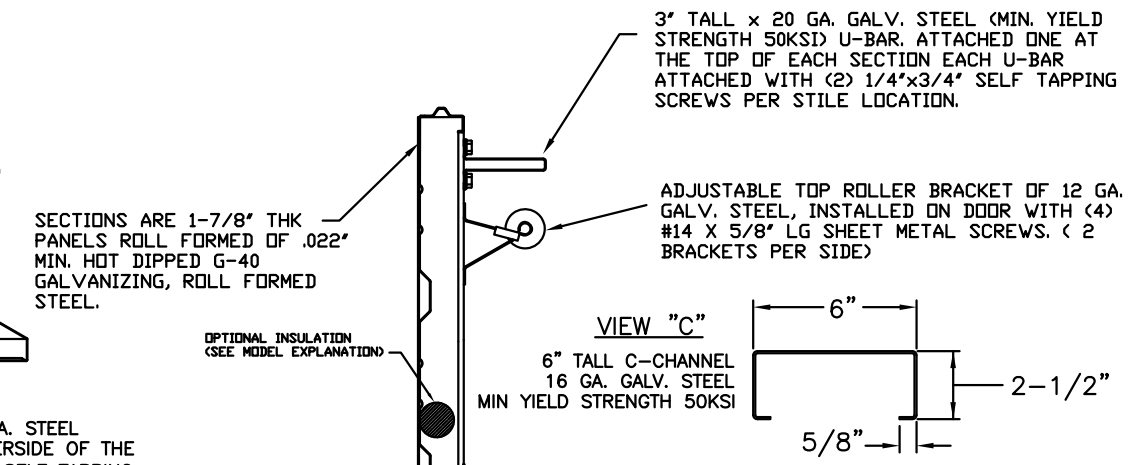
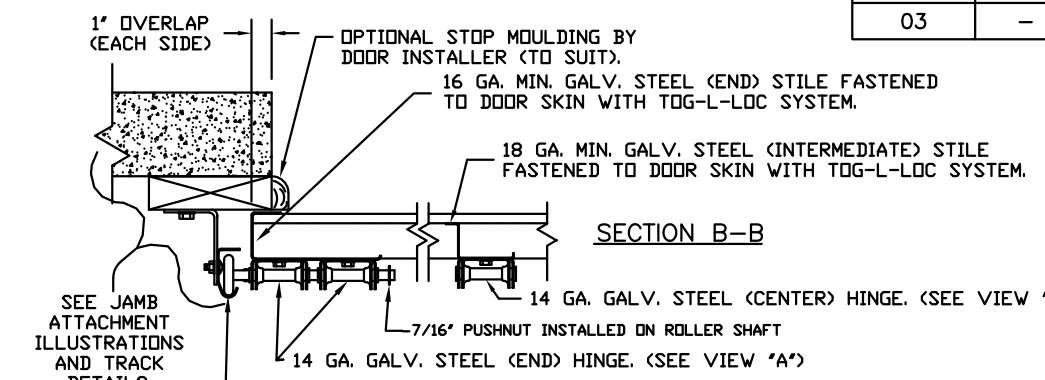
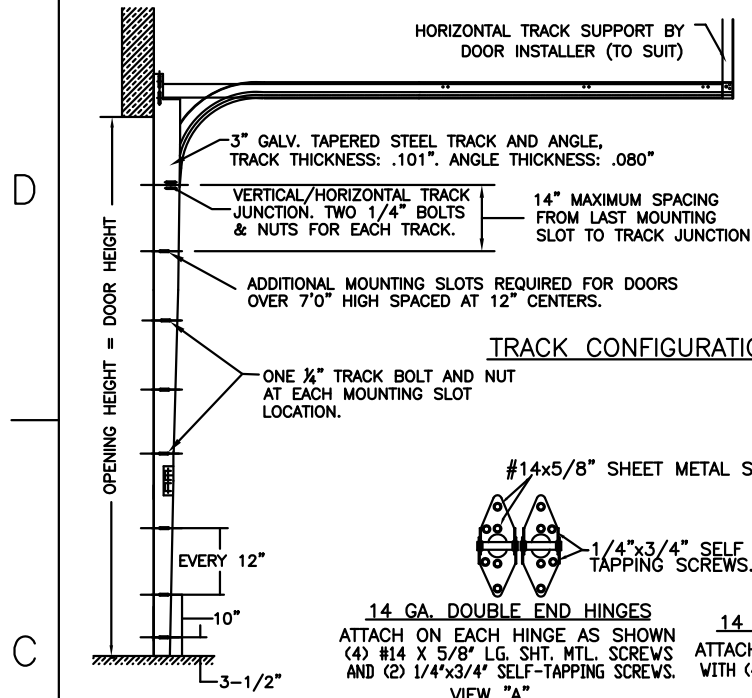
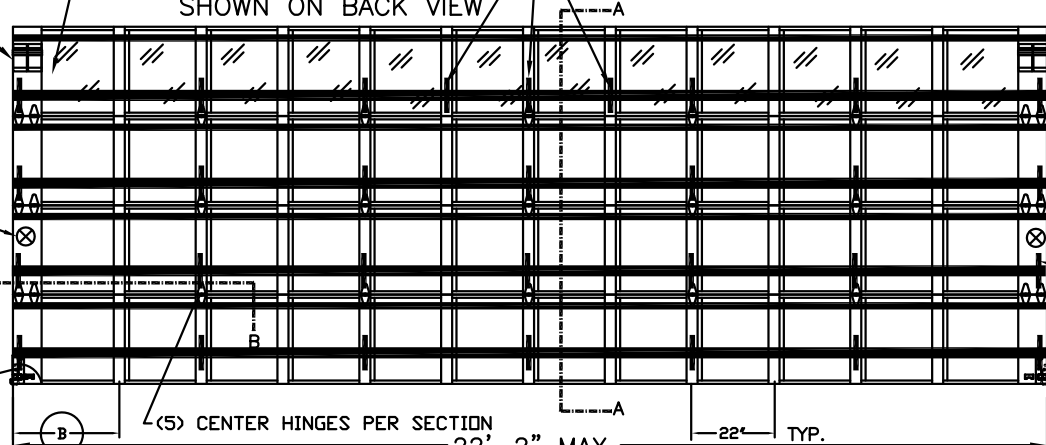
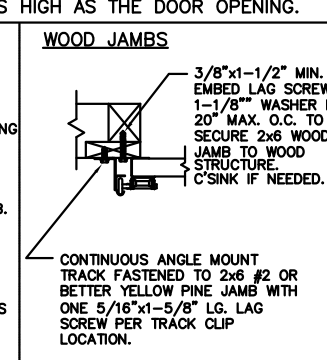
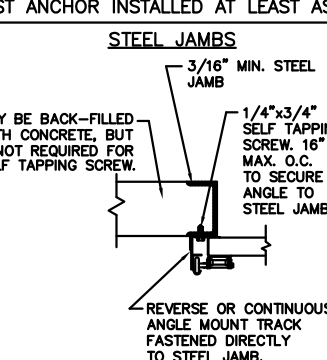
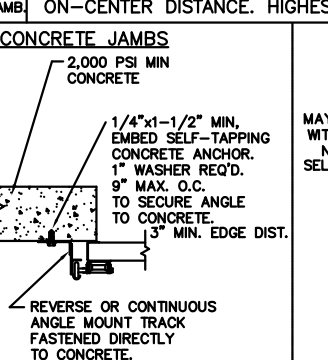
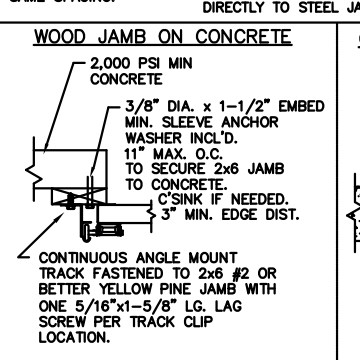
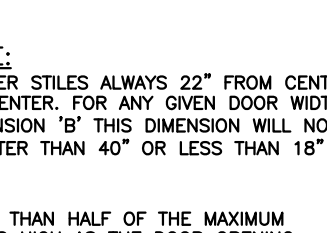
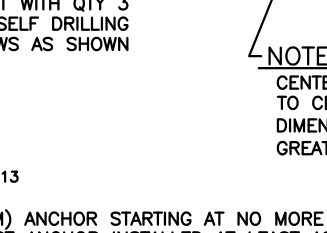
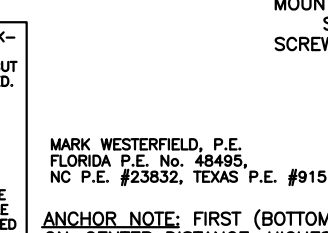
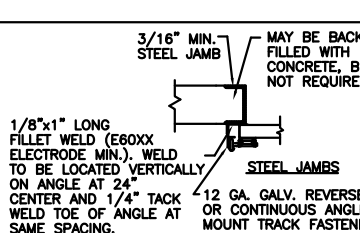


Table with 2 columns: DOOR HEIGHT 'A', NUMBER OF SECTIONS. Lists door heights from 8'-0" to 18'-0" and corresponding section counts.

Table with 2 columns: DOOR HEIGHT, 'L'. Lists door heights from 8'-0" to 18'-0" and corresponding lengths.



THE OPTIONAL GLAZING SHOWN ON THIS DRAWING MEETS THE WIND LOAD REQUIREMENTS OF THE FLORIDA BUILDING CODE OR INTERNATIONAL BUILDING CODE BUT DOES NOT MEET THE IMPACT RESISTANT REQUIREMENT FOR WINDBORNE DEBRIS REGIONS (FBC / IBC CHAPTER 16).



THIS DOOR MEETS OR EXCEEDS THE DESIGN LOADS FOR THE ULTIMATE WIND SPEEDS LISTED BELOW ACCORDING TO THE FLORIDA BUILDING CODE OR THE INTERNATIONAL BUILDING CODE (BASED ON ASCE7-10) FOR THE FOLLOWING CONDITIONS: 1) ENCLOSED BUILDING, 2) DOOR HAS 2' OF WIDTH IN BUILDING'S END ZONE, 3) ANY ROOF SLOPE, AND 4) TESTING IN ACCORDANCE WITH ANSI/DASMA 108. SITE-SPECIFIC CALCULATIONS BY A QUALIFIED DESIGN PROFESSIONAL MAY DIFFER.

Table with 6 columns: ULTIMATE WIND SPEED (MPH), EXPOSURE CATEGORY, MEAN ROOF HEIGHT. Lists wind speeds from 140 to 175 mph and corresponding exposure categories.

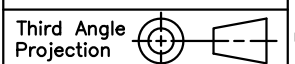
SECTION A-A (SIDE VIEW)

DESIGN LOADS: +30 & -30 P.S.F. TEST LOADS: +45 & -45 P.S.F. MANUFACTURING PRODUCT CODE: MPC: C-PAN-1E448

Company information for Clopay Building Products Company, including address, phone numbers, and product details like 'CLOPAY WINDLOAD RATING W5'.

THE DESIGN OF THE SUPPORTING STRUCTURAL ELEMENTS IS THE RESPONSIBILITY OF THE BUILDING ENGINEER OR ARCHITECT OF RECORD.

CLOPAY CORP. ALL RIGHTS RESERVED.



Unless Stated Otherwise TOLERANCES are: .0 = ±.031, .00 = ±.015, .000 = ±.005, .0000 = ±.001, Degrees = ±1/2'