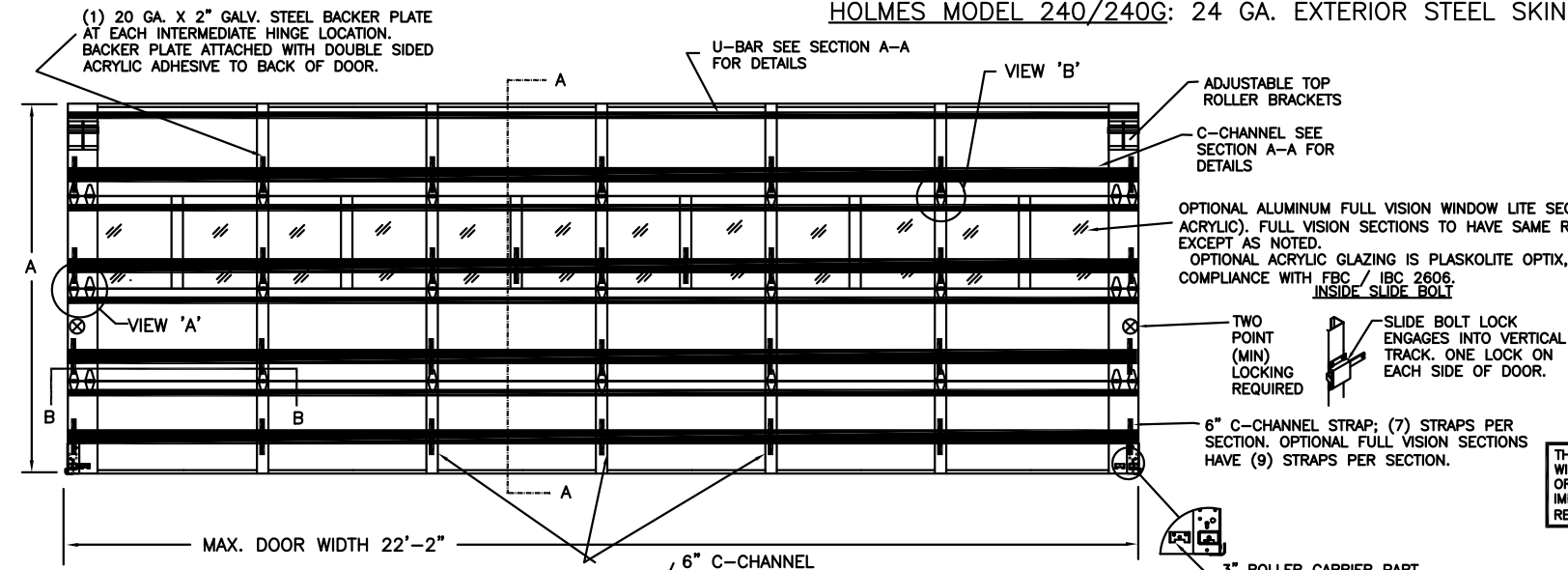


MODEL 240/3200/3220 UP TO 22'2"W x 18'0"H MAXIMUM

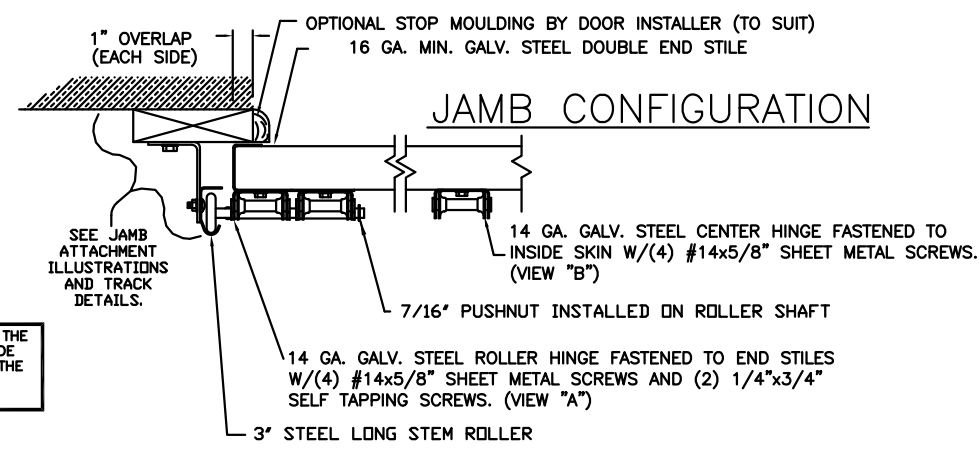
CLOPAY MODEL 3200: 24 GA. EXTERIOR STEEL SKIN
CLOPAY MODEL 3220: 20 GA. EXTERIOR STEEL SKIN

HOLMES MODEL 240/240G: 24 GA. EXTERIOR STEEL SKIN

REVISIONS					
REV. NO.	ZONE:	DATE:	ECN NO.	APPVD:	DESCRIPTION
01	-	07/07/05	ER1083	SH	UPDATED CODE REFERENCES
02	-	11/2008	-	-	ADDED MPC; UPDATED JAMB ATTACHMENT.
03	-	02/2012	-	-	UPDATED WINDCODE CHART



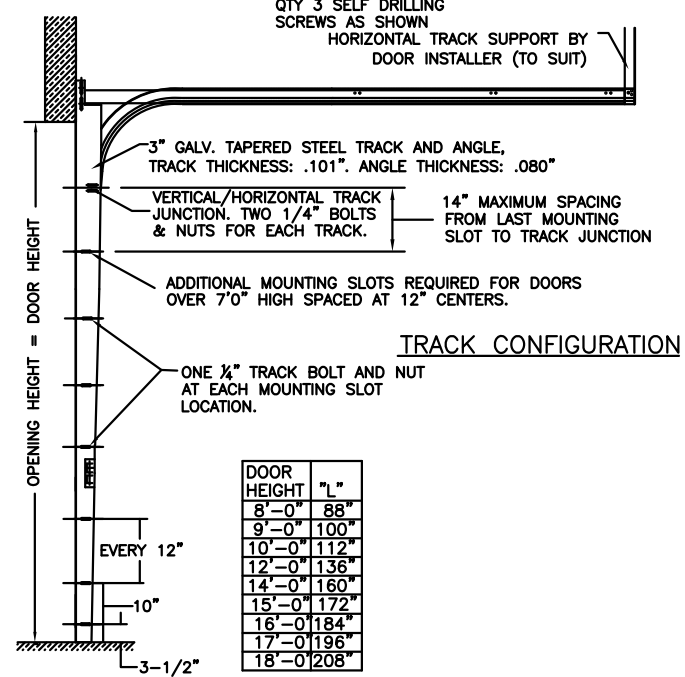
THE OPTIONAL GLAZING SHOWN ON THIS DRAWING MEETS THE WIND LOAD REQUIREMENTS OF THE FLORIDA BUILDING CODE OR INTERNATIONAL BUILDING CODE BUT DOES NOT MEET THE IMPACT RESISTANT REQUIREMENT FOR WINDBORNE DEBRIS REGIONS (FBC / IBC CHAPTER 16).



SECTION B-B

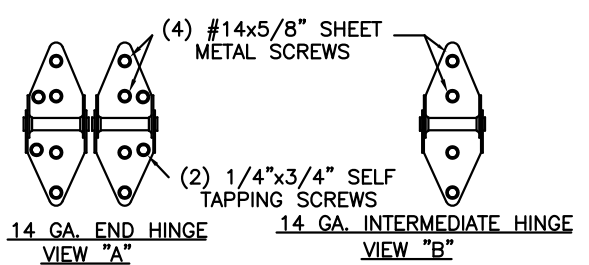
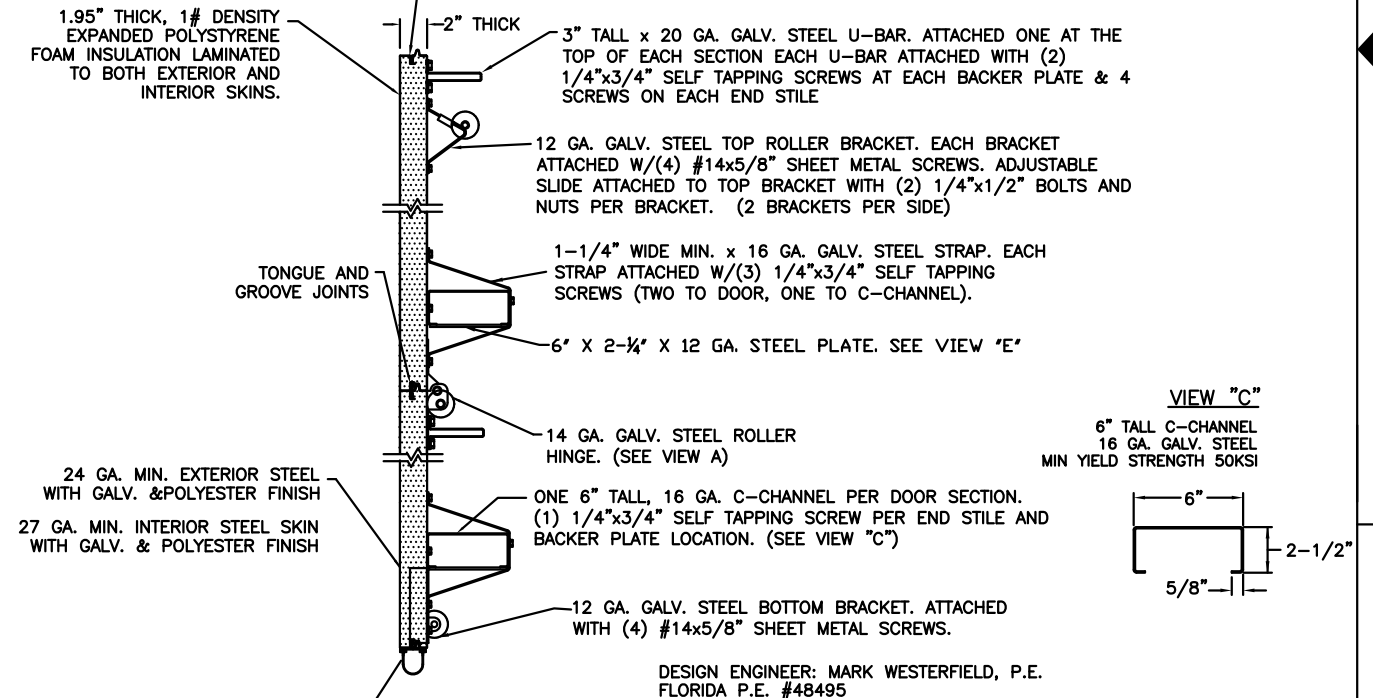
DOOR HEIGHT 'A'	NUMBER OF SECTIONS
UP TO 8'-0"	4
8'-3" THRU 10'-0"	5
10'-3" THRU 12'-0"	6
12'-3" THRU 14'-0"	7
14'-3" THRU 16'-0"	8
16'-3" THRU 18'-0"	9

VIEW "E"
ATTACH THE 6" x 2-1/4" x 12 GA. STEEL REINFORCING PLATE TO THE UNDERSIDE OF THE C-CHANNEL WITH (4) 1/4"x3/4" SELF TAPPING SCREWS AT THESE LOCATIONS.



DOOR HEIGHT	"L"
8'-0"	88"
9'-0"	100"
10'-0"	112"
12'-0"	136"
14'-0"	160"
15'-0"	172"
16'-0"	184"
17'-0"	196"
18'-0"	208"

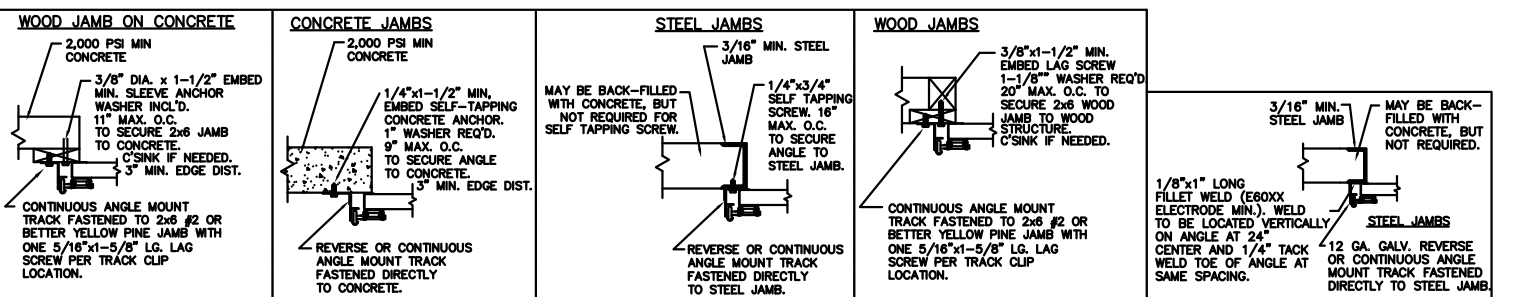
NOTE: THE DESIGN OF THE SUPPORTING STRUCTURAL ELEMENTS ARE THE RESPONSIBILITY OF THE PROFESSIONAL OF RECORD FOR THE BUILDING OR STRUCTURE AND IN ACCORDANCE WITH CURRENT BUILDING CODES FOR THE LOADS LISTED ON THIS DRAWING.



THIS DOOR MEETS OR EXCEEDS THE DESIGN LOADS FOR THE ULTIMATE WIND SPEEDS LISTED BELOW ACCORDING TO THE FLORIDA BUILDING CODE OR THE INTERNATIONAL BUILDING CODE (BASED ON ASCE7-10) FOR THE FOLLOWING CONDITIONS: 1) ENCLOSED BUILDING, 2) DOOR HAS 2' OF WIDTH IN BUILDING'S END ZONE, 3) ANY ROOF SLOPE, AND 4) TESTING IN ACCORDANCE WITH ANSI/DASMA 108. SITE-SPECIFIC CALCULATIONS BY A QUALIFIED DESIGN PROFESSIONAL MAY DIFFER.

ULTIMATE WIND SPEED (MPH)	140	145	150	160	175
EXPOSURE CATEGORY	B, C, D	B, C, D	B, C	B, C	B
MEAN ROOF HEIGHT	25'	15'	25'	15'	30'

ANCHOR NOTE: FIRST (BOTTOM) ANCHOR STARTING AT NO MORE THAN HALF OF THE MAXIMUM ON-CENTER DISTANCE. HIGHEST ANCHOR INSTALLED AT LEAST AS HIGH AS THE DOOR OPENING.



CLOPAY CORP. ALL RIGHTS RESERVED.



Unless Stated Otherwise TOLERANCES are
 .0 = ±.031
 .00 = ±.015
 .000 = ±.005
 .0000 = ±.001
 Degrees = ±1/2"
 Unless Stated Otherwise DIMENSIONS ARE IN INCHES.

DESIGN ENGINEER: MARK WESTERFIELD, P.E.
 FLORIDA P.E. #48495
 DESIGN LOADS: +30.0, -30.0 PSF
 TEST LOADS: +45.0, -45.0 PSF

MANUFACTURING PRODUCT CODE: MPC: C-DSIE-1F447

CLOPAY WINDLOAD RATING: W5

DESCRIPTION: MODEL 240/3200/3220 WINDLOAD 22'-2"

DRAWN BY: RJK DATE: 11/08/04 SCALE: NONE DWG. B

CHECKED BY: - DATE: - SHEET 1 OF 1 SIZE B

DWG. NO.: 103320 VER: IBC

8585 Duke Boulevard
 Mason, OH 45040 USA
 Tel. No. 513-770-4800
 Fax No. 513-770-4853