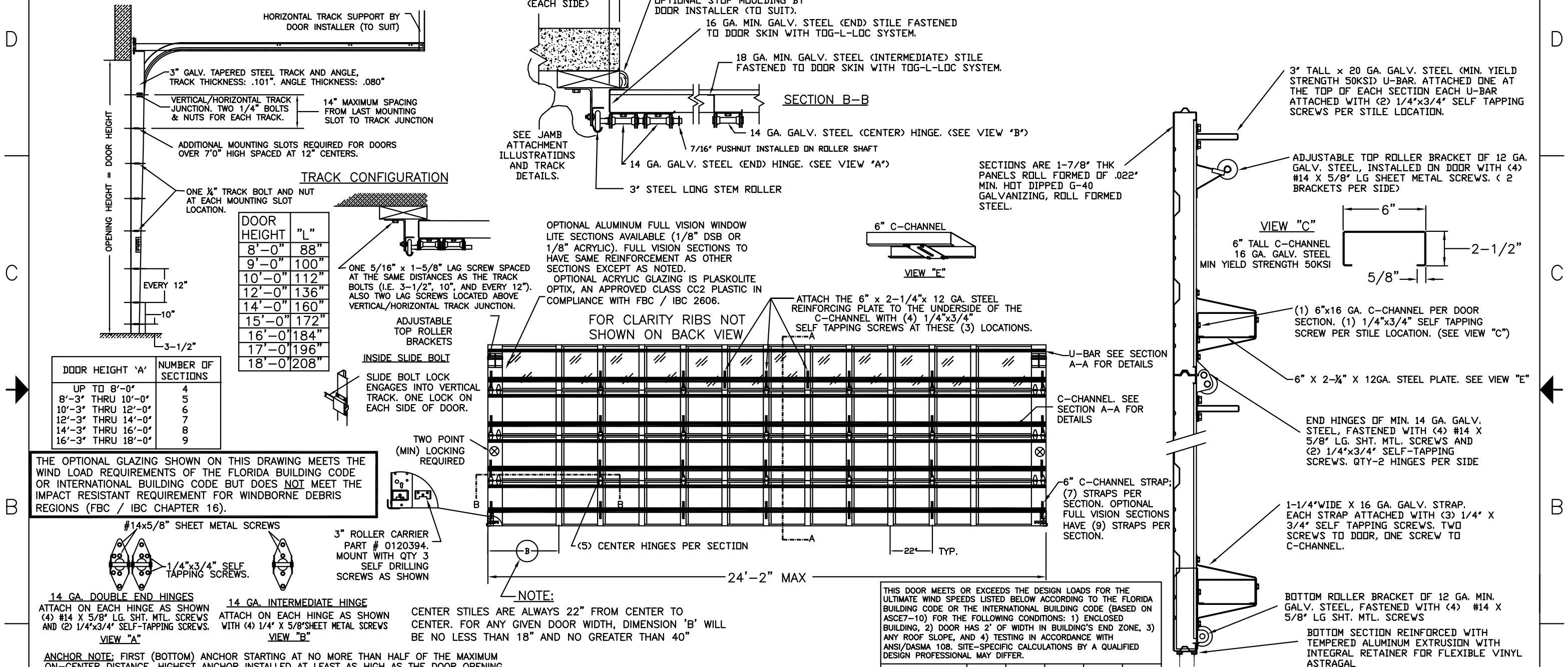


MODELS AVAILABLE (CLOPAY/ HOLMES/ IDEAL)
 MODELS 524, 520/ 224/ C4ST, C0ST
 INSULATED MODELS 524S, 520S, 524V/ 224S/ C4SS, C0SS, C4SV

UP TO 24'-2" WIDE X 18'-0" HIGH

REVISIONS

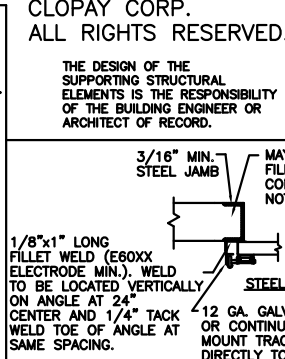
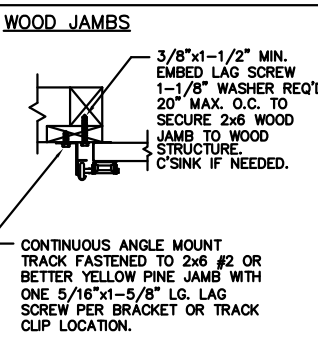
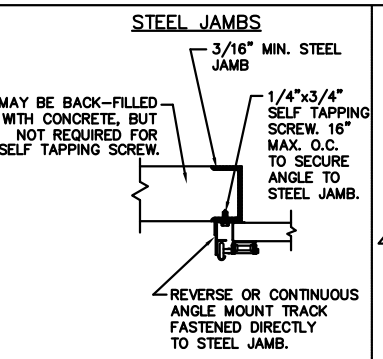
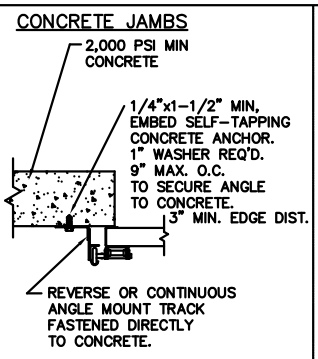
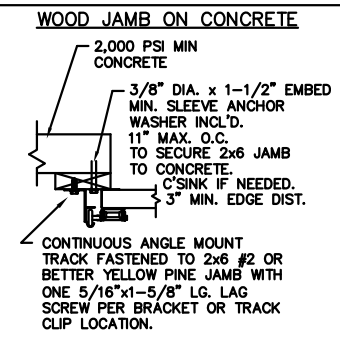
REV. NO.	ZONE:	DATE:	ECN NO.	APPVD:	DESCRIPTION
02	-	-	-	-	ADDED MPC; REVISED JAMB ATTACHMENT.
03	-	-	-	-	UPDATED WINDCODE CHART



THE OPTIONAL GLAZING SHOWN ON THIS DRAWING MEETS THE WIND LOAD REQUIREMENTS OF THE FLORIDA BUILDING CODE OR INTERNATIONAL BUILDING CODE BUT DOES NOT MEET THE IMPACT RESISTANT REQUIREMENT FOR WINDBORNE DEBRIS REGIONS (FBC / IBC CHAPTER 16).

THIS DOOR MEETS OR EXCEEDS THE DESIGN LOADS FOR THE ULTIMATE WIND SPEEDS LISTED BELOW ACCORDING TO THE FLORIDA BUILDING CODE OR THE INTERNATIONAL BUILDING CODE (BASED ON ASCE7-10) FOR THE FOLLOWING CONDITIONS: 1) ENCLOSED BUILDING, 2) DOOR HAS 2' OF WIDTH IN BUILDING'S END ZONE, 3) ANY ROOF SLOPE, AND 4) TESTING IN ACCORDANCE WITH ANSI/DASMA 108. SITE-SPECIFIC CALCULATIONS BY A QUALIFIED DESIGN PROFESSIONAL MAY DIFFER.

ULTIMATE WIND SPEED (MPH)	125	130	140	145	160
EXPOSURE CATEGORY	B, C, D	B, C, D	B, C	B, C	B
MEAN ROOF HEIGHT	25'	15'	25'	15'	30'



Unless Stated Otherwise TOLERANCES are

.0 = ±.031
 .00 = ±.015
 .000 = ±.005
 .0000 = ±.001
 Degrees = ±1/2"

Unless Stated Otherwise DIMENSIONS ARE IN INCHES.



8585 Duke Boulevard
 Mason, OH 45040 USA
 Tel. No. 513-770-4800
 Fax No. 513-770-4853

MARK WESTERFIELD, P.E.
 FLORIDA P.E. No. 48495,
 NC P.E. #23832, TEXAS P.E. #91513

MANUFACTURING PRODUCT CODE:
MPC: C-PAN-1E448

DESIGN LOADS: +25 & -25 P.S.F.
 TEST LOADS: +37.5 & -37.5 P.S.F.

DESCRIPTION: COMMERCIAL RIBBED DOOR, +25/-25 PSF DESIGN LOAD	SCALE: NONE	DWG. SIZE: B
DRAWN BY: RJK	DATE: 11/02/04	SHEET 1 OF 1
CHECKED BY: MWW	DATE: -	VER: IBC
DWG. NO.: 103333		