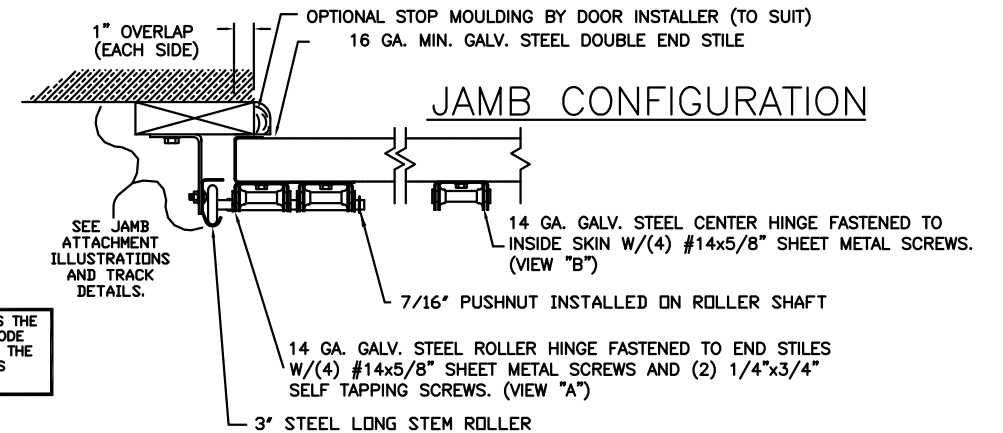
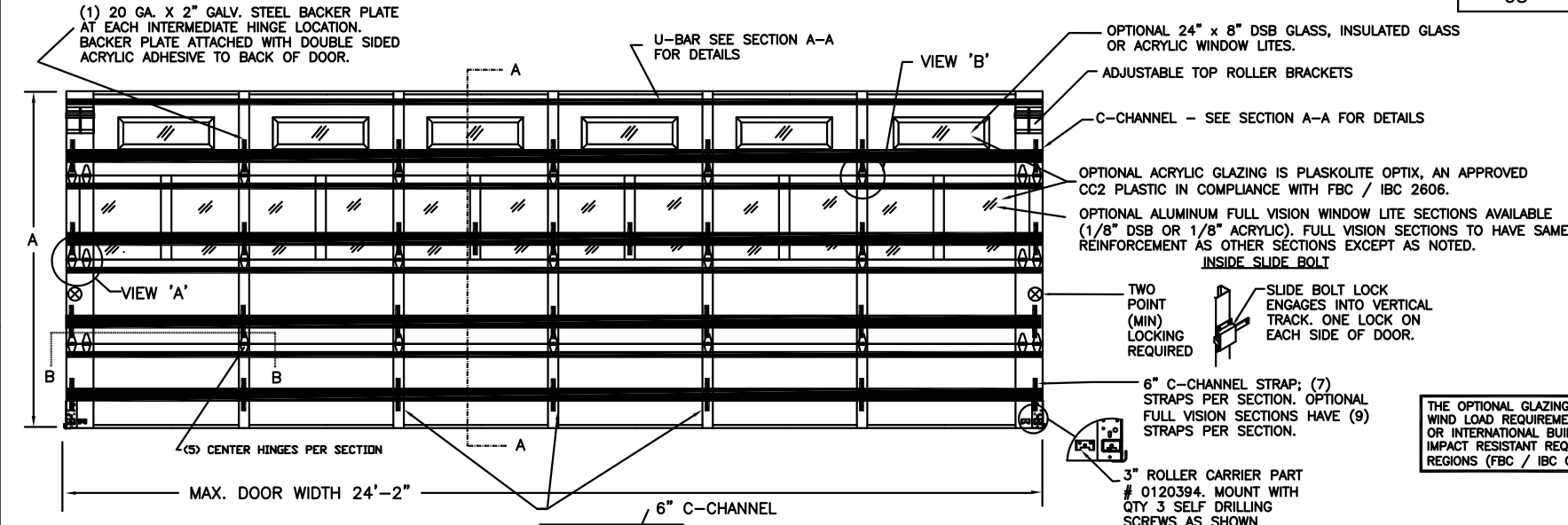


CLOPAY MODEL 3200: 24 GA. EXTERIOR STEEL SKIN
 CLOPAY MODEL 3220: 20 GA. EXTERIOR STEEL SKIN
 HOLMES MODEL 240/240G: 24 GA. EXTERIOR STEEL SKIN

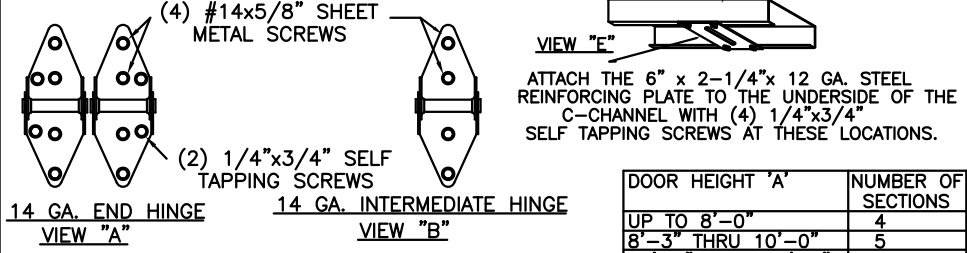
UP TO 24'2"W x 18'0"H MAXIMUM

REVISIONS

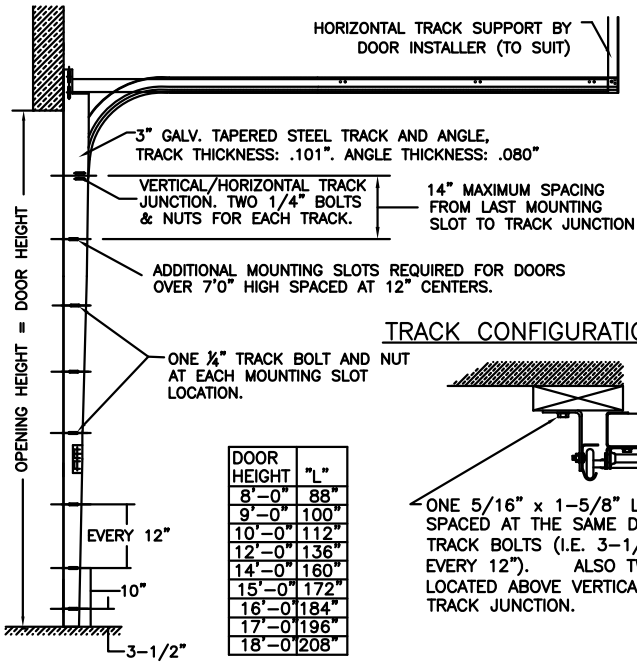
REV. NO.	ZONE:	DATE:	ECN NO.	APPVD:	DESCRIPTION
03	-	02/2012	-	-	UPDATED WINDCODE CHART



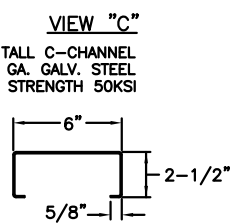
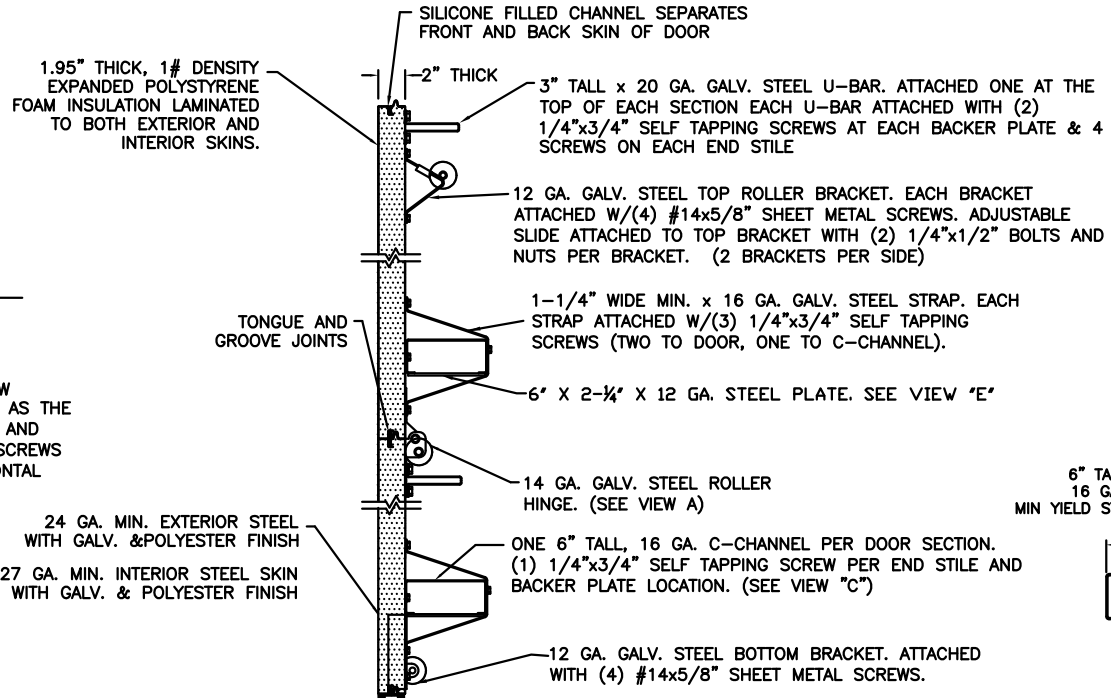
SECTION B-B



DOOR HEIGHT 'A'	NUMBER OF SECTIONS
UP TO 8'-0"	4
8'-3" THRU 10'-0"	5
10'-3" THRU 12'-0"	6
12'-3" THRU 14'-0"	7
14'-3" THRU 16'-0"	8
16'-3" THRU 18'-0"	9



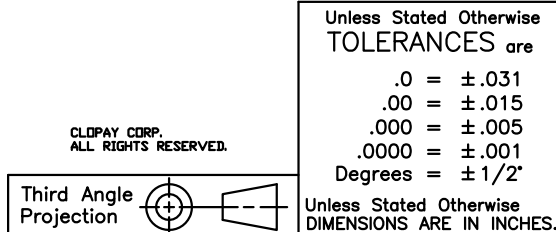
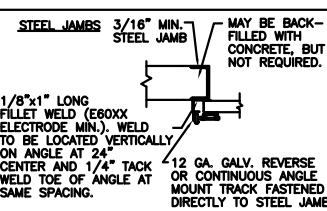
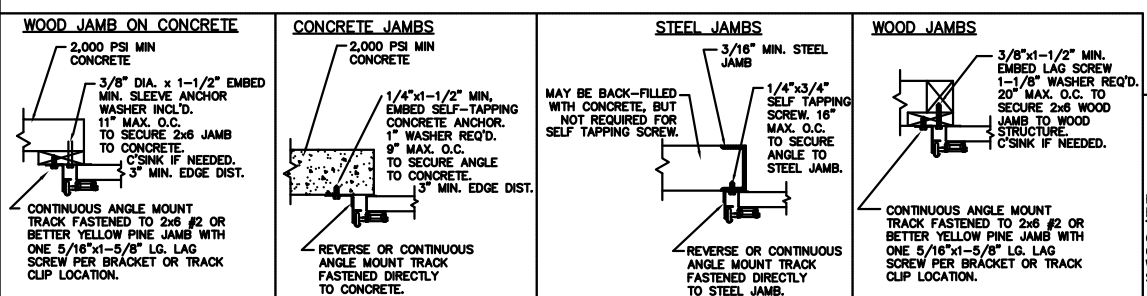
DOOR HEIGHT "L"	"L"
8'-0"	88"
9'-0"	100"
10'-0"	112"
12'-0"	136"
14'-0"	160"
15'-0"	172"
16'-0"	184"
17'-0"	196"
18'-0"	208"



THIS DOOR MEETS OR EXCEEDS THE DESIGN LOADS FOR THE ULTIMATE WIND SPEEDS LISTED BELOW ACCORDING TO THE FLORIDA BUILDING CODE OR THE INTERNATIONAL BUILDING CODE (BASED ON ASCE7-10) FOR THE FOLLOWING CONDITIONS: 1) ENCLOSED BUILDING, 2) DOOR HAS 2' OF WIDTH IN BUILDING'S END ZONE, 3) ANY ROOF SLOPE, AND 4) TESTING IN ACCORDANCE WITH ANSI/DASMA 108. SITE-SPECIFIC CALCULATIONS BY A QUALIFIED DESIGN PROFESSIONAL MAY DIFFER.

ULTIMATE WIND SPEED (MPH)	125	130	140	145	160
EXPOSURE CATEGORY	B, C, D	B, C, D	B, C	B, C	B
MEAN ROOF HEIGHT	25'	15'	25'	15'	30'

NOTE: THE DESIGN OF THE SUPPORTING STRUCTURAL ELEMENTS ARE THE RESPONSIBILITY OF THE PROFESSIONAL OF RECORD FOR THE BUILDING OR STRUCTURE AND IN ACCORDANCE WITH CURRENT BUILDING CODES FOR THE LOADS LISTED ON THIS DRAWING.



DESIGN ENGINEER: MARK WESTERFIELD, P.E.
 FLORIDA P.E. #48495, NC P.E. #23832, TEXAS P.E. #91513
 DESIGN LOADS: +25.0, -25.0 PSF
 TEST LOADS: +37.5, -37.5 PSF
 MANUFACTURING PRODUCT CODE: MPC: C-DSIE-1F447

Clopay Building Products Company
 8585 Duke Boulevard
 Mason, OH 45040 USA
 Tel. No. 513-770-4800
 Fax No. 513-770-4853

CLOPAY WINDLOAD RATING
W4

DESCRIPTION: MODEL 240/3200/3220 WINDLOAD 24'-2"

DRAWN BY: BFA DATE: 11/08/04 SCALE: NONE DWG. SIZE: B

CHECKED BY: - DATE: - SHEET 1 OF 1

DWG. NO.: 103334 VER: IBC