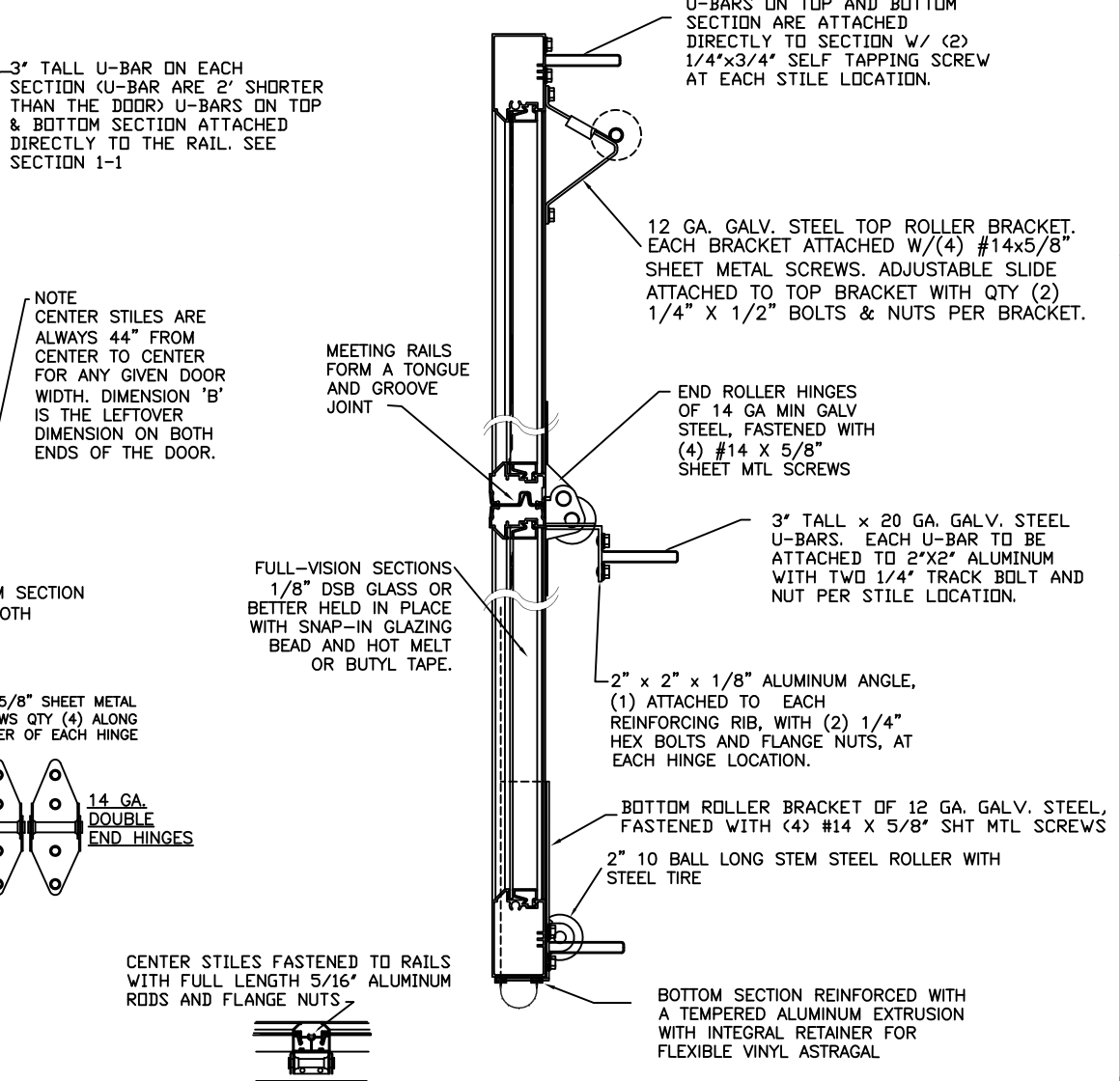
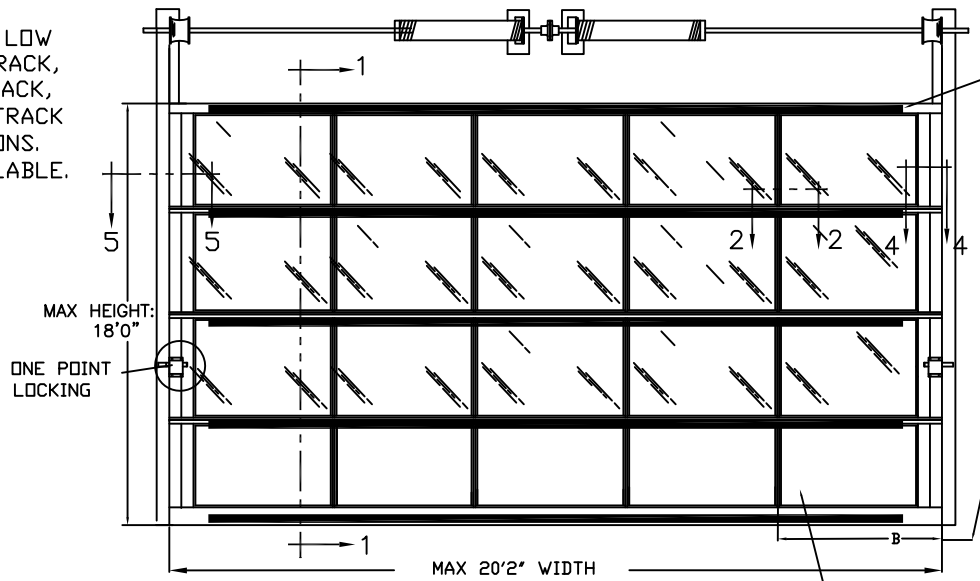
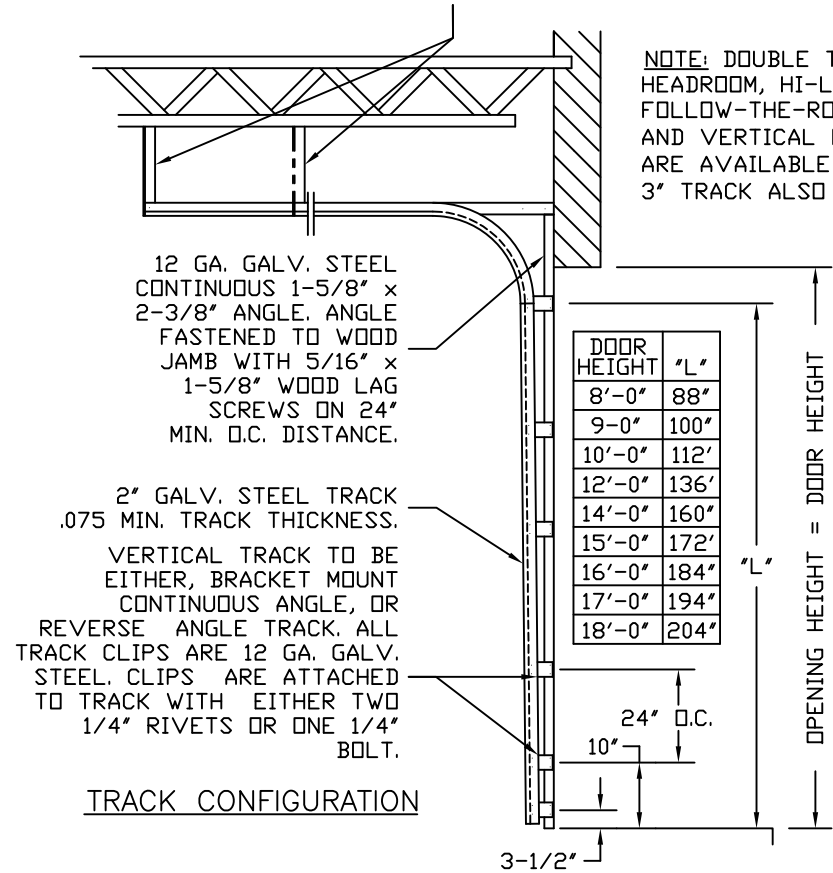


BRAND	MODEL
CLOPAY	902C, 902D, 902I 902M, 902P, 902T
IDEAL	C2ALC, C2ALD, C2ALI, C2ALM, C2ALP, C2ALT

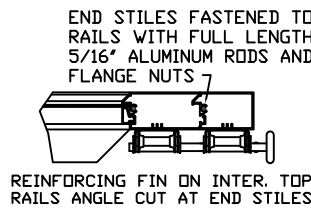
HORIZONTAL TRACK END HANGER BRACKET (SUPPLIED BY DOOR INSTALLER) CLOSES ROLLER CHANNEL. INTERMEDIATE HANGER REQ'D FOR DOORS IF HORIZONTAL TRACK DEFLECTION EXCEEDS 1/240TH OF DOOR HEIGHT.

REVISIONS					DESCRIPTION
REV. NO.	ZONE:	DATE:	ECN NO.	APPVD:	
01	-	12/01/08	-	SH	RELEASE FOR PRODUCTION

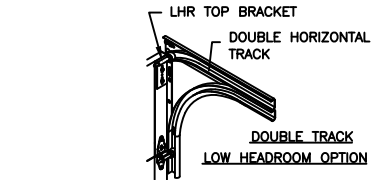
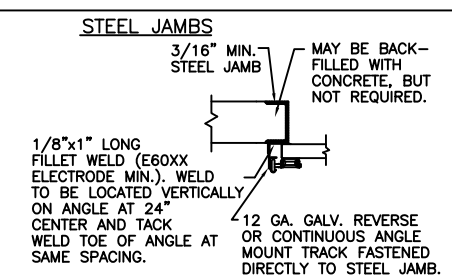
D  
C  
B  
A



DOOR IS MADE OF 6063-T5 ALUMINUM EXTRUSIONS. WALL THICKNESS:  
 TOP & BOTTOM RAILS .075  
 INTER. TOP & BOTTOM RAILS .075  
 TOP HAS .1 x 1.875" FIN  
 INTER. TOP RAIL CAP .040  
 SINGLE & DOUBLE END STILES .075  
 CENTER STILES .062

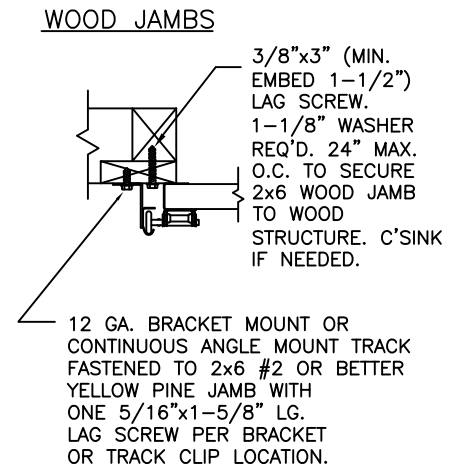
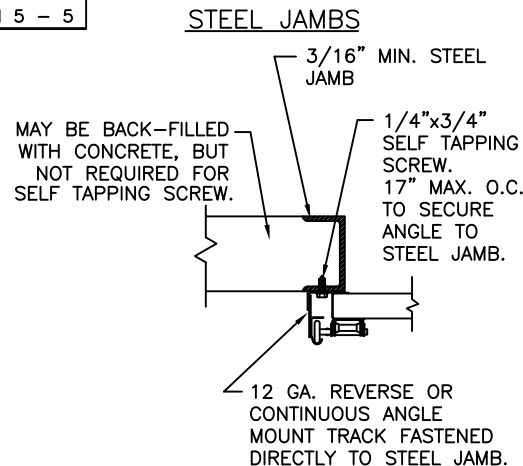
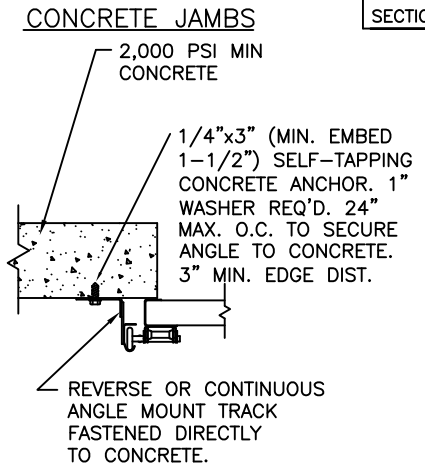
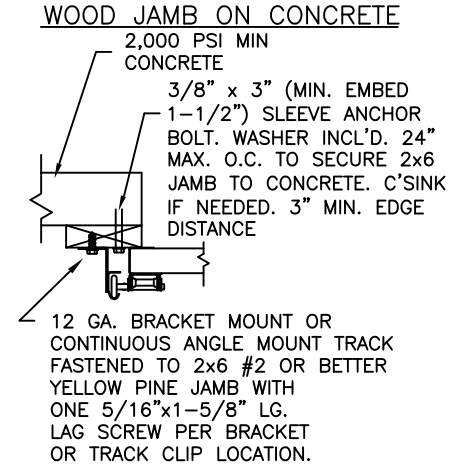


B  
A



ANCHOR NOTE: FIRST (BOTTOM) ANCHOR STARTING AT NO MORE THAN HALF OF THE MAXIMUM ON-CENTER DISTANCE. HIGHEST ANCHOR INSTALLED AT LEAST AS HIGH AS THE DOOR OPENING.

A



Third Angle Projection

Unless Stated Otherwise TOLERANCES are

.0	± .031
.00	± .015
.000	± .005
.0000	± .001
Degrees	± 1/2°

Unless Stated Otherwise DIMENSIONS ARE IN INCHES.

DESIGN ENGINEER: MARK WESTERFIELD, P.E.  
 FLORIDA P.E. #48495, NC P.E. #23832, TEXAS P.E. #91513  
 DESIGN LOADS: +13.5 & -13.5 P.S.F.  
 TEST LOADS +20 & -20 P.S.F.

**Clopay**  
 Building Products Company  
 8585 Duke Boulevard  
 Mason, OH 45040 USA  
 Tel. No. 513-770-4800  
 Fax No. 513-770-4853

MPC: C-AL-1F499  
 CLOPAY WINDLOAD RATING  
**W1**

DESCRIPTION: M/N 902, C2AL 20'2" WIDE DES. +13.5/-13.5 PSF			
DRAWN BY: NS	DATE: 12/1/08	SCALE: NONE	DWG. B
CHECKED BY: SH	DATE: 12/2/08	SHEET 1 OF 1	SIZE B
DWG. NO.: 103617	VER: -		

4

3

2

1

D  
C  
B  
A

B  
A

A