

20'-2" WIDE (MAX) X 18'-0" HIGH (MAX)

MODELS AVAILABLE (CLOPAY/ HOLMES/ IDEAL)

24GA EXTERIOR SKIN

NON-INSULATED MODELS:
 MODELS: CLOPAY - 524W1
 HOLMES - 224W1
 IDEAL - C45TW1

VINYL BACKED INSULATION MODELS:
 MODELS: CLOPAY - 524W1
 IDEAL - C45W1

STEEL BACKED INSULATED MODELS:
 MODELS: CLOPAY - 524SW1
 HOLMES - 224SW1
 IDEAL - C45SW1

20GA EXTERIOR SKIN

(RIBBED DOORS)
 NON-INSULATED MODELS:
 MODELS: CLOPAY - 520W1
 IDEAL - C05TW1

STEEL BACKED INSULATED MODELS:
 MODELS: CLOPAY - 520SW1
 IDEAL - C05SW1

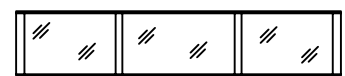
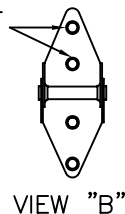
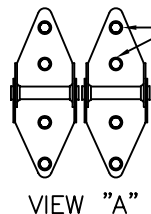
NOTE: ALL STEEL BACKED INSULATED DOORS COME WITH EITHER 31GA OR 24GA STEEL BACKER

20GA EXTERIOR SKIN

(FLUSH DOORS)
 NON-INSULATED MODELS:
 MODELS: IDEAL - C15TW1

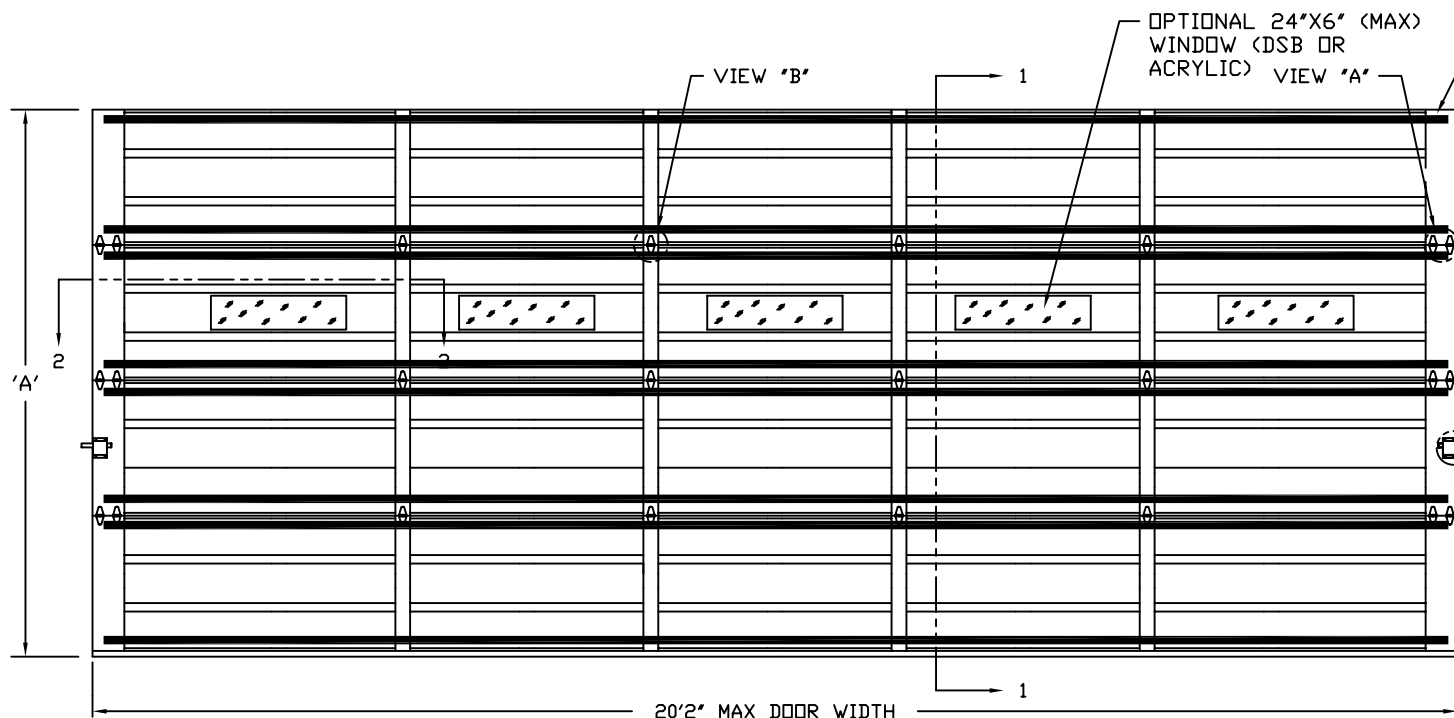
STEEL BACKED INSULATED MODELS:
 MODELS: IDEAL - C15SW1

DOOR HEIGHT 'A'	NUMBER OF SECTIONS
8'-0"	4
8'-3" THRU 10'-0"	5
10'-3" THRU 12'-0"	6
12'-3" THRU 14'-0"	7
14'-3" THRU 16'-0"	8
16'-3" THRU 18'-0"	9



SECTION 2-2

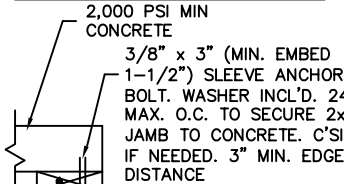
OPTIONAL ALUMINUM FULL VISION WINDOW LITE SECTIONS AVAILABLE (1/8" DSB, 1/8" PLEXI, OR 1/4" WIRE) FULL VISION SECTIONS TO HAVE 2" X 2" X 1/8" L-ANGLE HORIZONTAL WITH 3" STRUT ATTACHED REINFORCEMENT. L-ANGLES ATTACHED TO THE REINFORCING RIB WITH (2) 1/4"-20 X 5/8" HEX HEAD BOLTS AND NUTS AT EVERY HINGE LOCATION. L-ANGLE NOT REQ'D. ON TOP SECTION.



20'2" MAX DOOR WIDTH

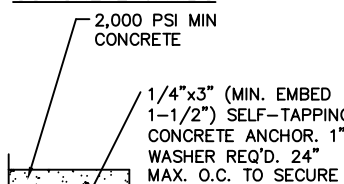
ANCHOR NOTE: FIRST (BOTTOM) ANCHOR STARTING AT NO MORE THAN HALF OF THE MAXIMUM ON-CENTER DISTANCE. HIGHEST ANCHOR INSTALLED AT LEAST AS HIGH AS THE DOOR OPENING.

WOOD JAMB ON CONCRETE



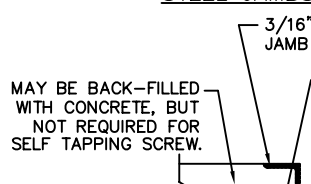
12 GA. BRACKET MOUNT OR CONTINUOUS ANGLE MOUNT TRACK FASTENED TO 2x6 #2 OR BETTER YELLOW PINE JAMB WITH ONE 5/16"x1-5/8" LG. LAG SCREW PER BRACKET OR TRACK CLIP LOCATION.

CONCRETE JAMBS



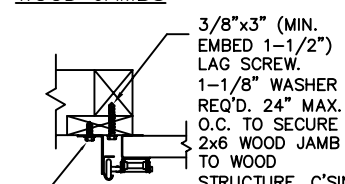
REVERSE OR CONTINUOUS ANGLE MOUNT TRACK FASTENED DIRECTLY TO CONCRETE.

STEEL JAMBS



12 GA. REVERSE OR CONTINUOUS ANGLE MOUNT TRACK FASTENED DIRECTLY TO STEEL JAMB.

WOOD JAMBS



12 GA. BRACKET MOUNT OR CONTINUOUS ANGLE MOUNT TRACK FASTENED TO 2x6 #2 OR BETTER YELLOW PINE JAMB WITH ONE 5/16"x1-5/8" LG. LAG SCREW PER BRACKET OR TRACK CLIP LOCATION.

MARK WESTERFIELD, P.E.
 FLORIDA P.E. #48495,
 NC P.E. #23832, TEXAS P.E. #91513

THE DESIGN OF THE SUPPORTING STRUCTURAL ELEMENTS IS THE RESPONSIBILITY OF THE BUILDING ENGINEER OR ARCHITECT OF RECORD.



Unless Stated Otherwise TOLERANCES are
 .0 = ±.031
 .00 = ±.015
 .000 = ±.005
 .0000 = ±.001
 Degrees = ±1/2"

Unless Stated Otherwise DIMENSIONS ARE IN INCHES.

DESIGN LOADS: +13.5 & -13.5 P.S.F.
 TEST LOADS +20 & -20 P.S.F.



8585 Duke Boulevard
 Mason, OH 45040 USA
 Tel. No. 513-770-4800
 Fax No. 513-770-4853

CLOPAY WINDLOAD RATING
W1

DESCRIPTION: COMMERCIAL RIBBED DOOR, +/- 13.5 PSF DESIGN LOAD

DRAWN BY: BFA DATE: 2/2006 SCALE: NTS DWG. B

CHECKED BY: SH DATE: 2/2006 SHEET 1 OF 1 SIZE B

DWG. NO.: 103618

REVISIONS						DESCRIPTION
REV. NO.	ZONE:	DATE:	ECN NO.	APPVD:		
01	-	12/19/07	ER1165	SH		ADDED IDEAL M/N'S

THIS DOOR MEETS OR EXCEEDS THE DESIGN LOADS FOR THE WIND SPEEDS LISTED BELOW ACCORDING TO THE INTERNATIONAL BUILDING CODE FOR THE FOLLOWING CONDITIONS: 1) ENCLOSED BUILDING, 2) DOOR HAS 2' OF WIDTH IN BUILDING'S END ZONE, 3) IMPORTANCE FACTOR OF 1.0, 4) ANY ROOF SLOPE, AND 5) 50% SAFETY FACTOR.

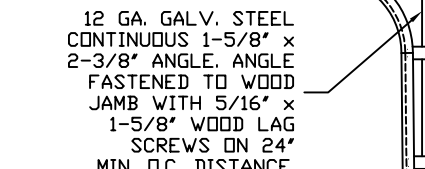
WIND SPEED (MPH)	≤ 90
EXPOSURE LEVEL	B
MEAN ROOF HEIGHT	≤ 30'

THE OPTIONAL GLAZING SHOWN ON THIS DRAWING MEETS THE WIND LOAD REQUIREMENTS OF THE FLORIDA BUILDING CODE OR INTERNATIONAL BUILDING CODE BUT DOES NOT MEET THE IMPACT RESISTANT REQUIREMENT FOR WINDBORNE DEBRIS REGIONS (REFER TO CHAPTER 16 FBC / IBC).

HORIZONTAL TRACK END HANGER BRACKET (SUPPLIED BY DOOR INSTALLER) CLOSES ROLLER CHANNEL. INTERMEDIATE HANGER REQ'D FOR DOORS IF HORIZONTAL TRACK DEFLECTION EXCEEDS 1/240TH OF DOOR HEIGHT.

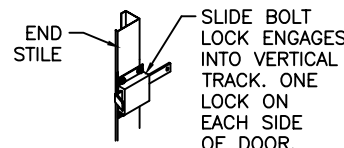
NOTE: DOUBLE TRACK LOW HEADROOM, HI-LIFT TRACK, FOLLOW-THE-ROOF TRACK, AND VERTICAL LIFT TRACK ARE AVAILABLE OPTIONS. 3' TRACK ALSO AVAILABLE.

ADJUSTABLE TOP ROLLER BRACKET OF 12 GA. GALV. STEEL. EACH BRACKET ATTACHED W/(4) #14x5/8" SHEET METAL SCREWS.



2" GALV. STEEL TRACK .075 MIN. TRACK THICKNESS. VERTICAL TRACK TO BE EITHER, BRACKET MOUNT CONTINUOUS ANGLE, OR REVERSE ANGLE TRACK. ALL TRACK CLIPS ARE 12 GA. GALV. STEEL. CLIPS ARE ATTACHED TO TRACK WITH EITHER TWO 1/4" RIVETS OR ONE 1/4" BOLT.

TRACK CONFIGURATION



INSIDE SLIDE BOLT LOCK OPTION

DOOR HEIGHT 'L'	'L'
8'-0"	88"
9'-0"	100"
10'-0"	112"
12'-0"	136"
14'-0"	160"
15'-0"	172"
16'-0"	184"
17'-0"	194"
18'-0"	204"

OPENING HEIGHT = DOOR HEIGHT

ROLLER (CENTER) HINGES OF 14 GA. GALV. STEEL. EACH FASTENED TO END STILES W/(4) #14x5/8" SHEET METAL SCREWS.

ROLLER (END) HINGE OF 14 GA. GALV. STEEL. EACH FASTENED TO END STILES W/(4) #14x5/8" SHEET METAL SCREWS

2" ROLLERS W/ (10) 1/4" STEEL BALL BEARINGS FULL FLOATING IN CASE HARDENED STEEL RACES

BOTTOM ROLLER BRACKET OF 12 GA. GALV. STEEL FASTENED W/ (4) #14x5/8" SHEET METAL SCREWS

ALUMINUM EXTRUSION AND VINYL WEATHERSTRIP

SECTION 1-1