

10'-2" WIDE (MAX) X 18'-0" HIGH (MAX)

CLOPAY/IDEAL/HOLMES

- 3717/C7X17 - 27GA 1-3/4" THICK RIBBED DOOR
- 3718/C7X18 - 27GA 1-3/4" THICK FLUSH DOOR
- 3720/C7X20/240U - 27GA 2" THICK RIBBED DOOR
- 3722/COX22 - 20GA 2" THICK FLUSH DOOR

REVISIONS					
REV. NO.	ZONE:	DATE:	ECN NO.	APPVD:	DESCRIPTION
01	-	11/2008	-	-	ADDED MPC; REVISED JAMB ATTACHMENT.
02	-	02/2012	-	-	UPDATED WINDCODE CHART

HORIZONTAL TRACK END HANGER BRACKET (SUPPLIED BY DOOR INSTALLER) CLOSES ROLLER CHANNEL. INTERMEDIATE HANGER REQUIRED FOR DOORS 12'-0" AND HIGHER

NOTE: DOUBLE TRACK LOW HEADROOM, HI-LIFT TRACK, FOLLOW-THE-ROOF TRACK, AND VERTICAL LIFT TRACK ARE AVAILABLE OPTIONS.

THE OPTIONAL GLAZING SHOWN ON THIS DRAWING MEETS THE WIND LOAD REQUIREMENTS OF THE FLORIDA BUILDING CODE OR INTERNATIONAL BUILDING CODE BUT DOES NOT MEET THE IMPACT RESISTANT REQUIREMENT FOR WINDBORNE DEBRIS REGIONS (REF. CHAPTER 16 FBC/IBC)

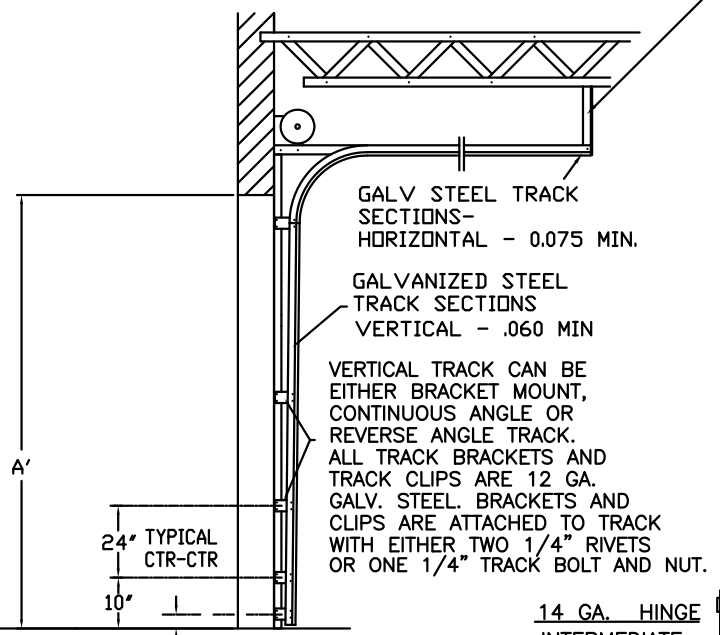
THIS DOOR MEETS OR EXCEEDS THE DESIGN LOADS FOR THE ULTIMATE WIND SPEEDS LISTED BELOW ACCORDING TO THE FLORIDA BUILDING CODE OR THE INTERNATIONAL BUILDING CODE (BASED ON ASCE7-10) FOR THE FOLLOWING CONDITIONS: 1) ENCLOSED BUILDING, 2) DOOR HAS 2' OF WIDTH IN BUILDING'S END ZONE, 3) ANY ROOF SLOPE, AND 4) TESTING IN ACCORDANCE WITH ANSI/DASMA 108. SITE-SPECIFIC CALCULATIONS BY A QUALIFIED DESIGN PROFESSIONAL MAY DIFFER.

ULTIMATE WIND SPEED (MPH)	120	125	130	140	155
EXPOSURE CATEGORY	B, C, D	B, C, D	B, C	B, C	B
MEAN ROOF HEIGHT	25'	15'	25'	15'	30'

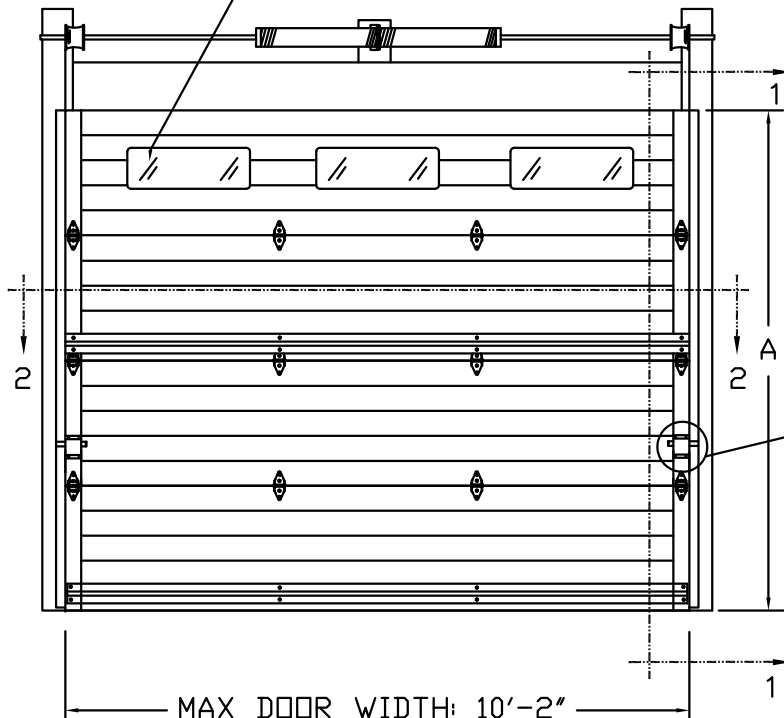
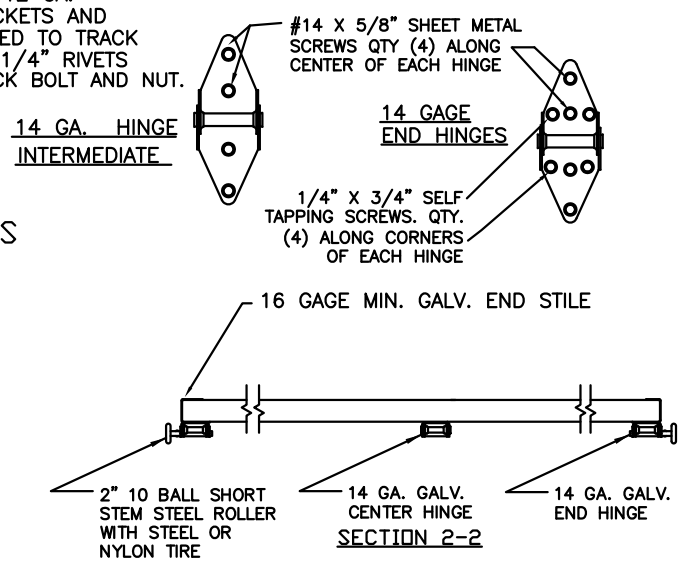
DOOR HEIGHT 'A'	NUMBER OF SECTIONS
UP TO 8'-0"	4
8'-3" THRU 10'-0"	5
10'-3" THRU 12'-0"	6
12'-3" THRU 14'-0"	7
14'-3" THRU 16'-0"	8
16'-3" THRU 18'-0"	9

OPTIONAL ALUMINUM FULL VISION WINDOW LITE SECTIONS AVAILABLE (1/8" DSB, 1/8" ACRYLIC, 1/4" WIRE, 1/2" INSUL.). FULL VISION SECTIONS TO HAVE SAME REINFORCEMENT AS OTHER SECTIONS. OPTIONAL ACRYLIC IS PLASKOLITE OPTIX, AN APPROVED CC2 PLASTIC IN COMPLIANCE WITH IBC/FBC 2606.

OPTIONAL 24 X 8 DSB OR INSULATED WINDOW LITES AVAILABLE



HINGE DETAIL

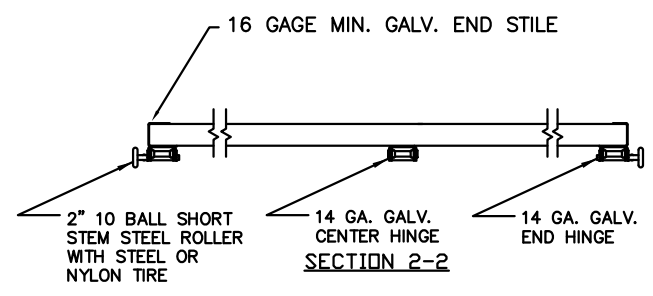
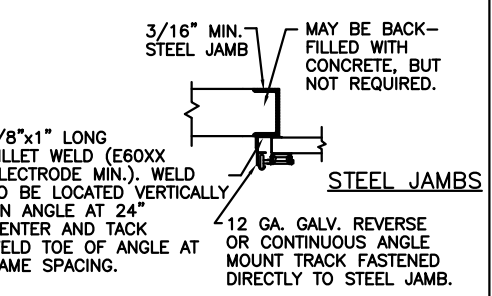


SECTIONS ARE 1-3/4" THICK (MIN.) PANELS. EXTERIOR 27 GA. MIN. GALV. STEEL. INTERIOR 27 GA. MIN. GALV. STEEL. THE STUCCO EMBOSSED STEEL TEXTURE IS PREPAINTED WITH A BAKED POLYESTER PAINT. OPTIONAL MINOR RIBS ARE PLACED EVERY 4 INCHES ALONG THE WIDTH OF THE EXTERIOR PANELS.

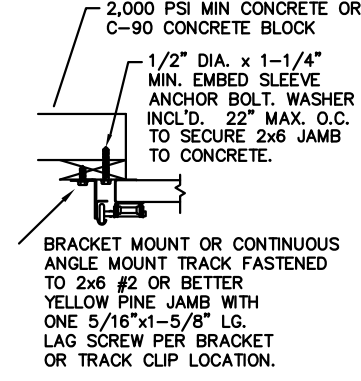
12 GA. GALV. STEEL TOP ROLLER BRACKET. EACH BRACKET ATTACHED W/(4) #14x5/8" SHEET METAL SCREWS. ADJUSTABLE SLIDE ATTACHED TO TOP BRACKET WITH (2) 1/4"x1/2" BOLTS AND NUTS PER BRACKET.

(1) 2 1/4" TALL x 20 GA. GALV. STEEL U-BAR ON THE BOTTOM OF EVERY OTHER SECTION, STARTING WITH THE BOTTOM. EACH U-BAR TO BE ATTACHED WITH TWO 1/4"x3/4" SELF TAPPING SCREWS PER STILE LOCATION.

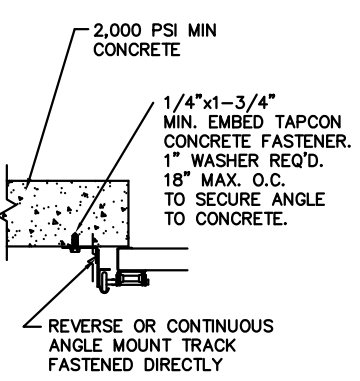
SIDE ELEVATION STANDARD-LIFT TRACK DETAILS



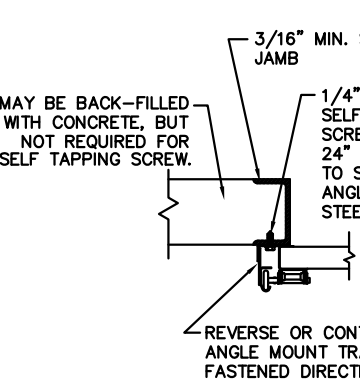
WOOD JAMB ON CONCRETE



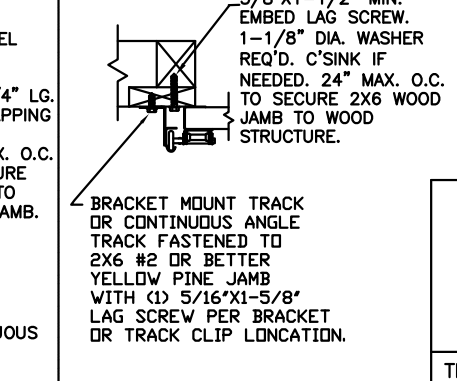
CONCRETE JAMBS



STEEL JAMBS



WOOD JAMBS



THE DESIGN OF THE SUPPORTING STRUCTURAL ELEMENTS IS THE RESPONSIBILITY OF THE BUILDING ENGINEER OR

DESIGN ENGINEER: MARK WESTERFIELD, P.E. FLORIDA P.E. #48495, NC P.E. #23832, TEXAS P.E. #91513

SECTION 1 - 1 DESIGN LOADS: +25.0 & -25.0 PSF TEST LOADS +37.5 & -37.5 PSF

MPC: C-DSIU-1D477

CLOPAY CORP. ALL RIGHTS RESERVED.

Unless Stated Otherwise TOLERANCES are
 .0 = ±.031
 .00 = ±.015
 .000 = ±.005
 .0000 = ±.001
 Degrees = ±1/2'

Unless Stated Otherwise DIMENSIONS ARE IN INCHES.

Third Angle Projection

Glopay Building Products Company

8585 Duke Boulevard
 Mason, OH 45040 USA
 Tel. No. 513-770-4800
 Fax No. 513-770-4853

WINDLOAD RATING
 W4

DESCRIPTION: MODEL 37XX URETHANE INSULATED DOOR

DRAWN BY: BFA	DATE: 11/26/07	SCALE: N/A	DWG. SIZE B
CHECKED BY: S.HAMILTON	DATE: 11/26/07	SHEET 1 OF 1	

DWG. NO.: 104040 VER: IBC