

CLOPAY/IDEAL/HOLMES

- 3717/C7X17 - 27GA 1-3/4" THICK RIBBED DOOR
- 3718/C7X18 - 27GA 1-3/4" THICK FLUSH DOOR
- 3720/C7X20/240U - 27GA 2" THICK RIBBED DOOR
- 3722/COX22 - 20GA 2" THICK FLUSH DOOR

14'-2" WIDE (MAX) X 18'-0" HIGH (MAX)

REVISIONS

REV. NO.	ZONE:	DATE:	ECN NO.	APPVD:	DESCRIPTION
00	-	12/26/07	-	SH	INITIAL RELEASE
01	-	11/2008	-	-	ADDED MPC; UPDATED JAMB ATTACHMENT.
02	-	02/2012	-	-	UPDATED WINDCODE CHART

HORIZONTAL TRACK END HANGER BRACKET (SUPPLIED BY DOOR INSTALLER) CLOSES ROLLER CHANNEL. INTERMEDIATE HANGER REQUIRED FOR DOORS 12'-0" AND HIGHER

GALV STEEL TRACK SECTIONS- HORIZONTAL - 0.075 MIN.

GALVANIZED STEEL TRACK SECTIONS VERTICAL - .075 MIN

VERTICAL TRACK CAN BE EITHER BRACKET MOUNT, CONTINUOUS ANGLE OR REVERSE ANGLE TRACK. ALL TRACK BRACKETS AND TRACK CLIPS ARE 12 GA. GALV. STEEL. BRACKETS AND CLIPS ARE ATTACHED TO TRACK WITH EITHER TWO 1/4" RIVETS OR ONE 1/4" TRACK BOLT AND NUT.

DOOR HEIGHT 'A'	NUMBER OF SECTIONS
UP TO 8'-0"	4
8'-3" THRU 10'-0"	5
10'-3" THRU 12'-0"	6
12'-3" THRU 14'-0"	7
14'-3" THRU 16'-0"	8
16'-3" THRU 18'-0"	9

NOTE: DOUBLE TRACK LOW HEADROOM, HI-LIFT TRACK, FOLLOW-THE-ROOF TRACK, AND VERTICAL LIFT TRACK ARE AVAILABLE OPTIONS.

THE OPTIONAL GLAZING SHOWN ON THIS DRAWING MEETS THE WIND LOAD REQUIREMENTS OF THE FLORIDA BUILDING CODE OR INTERNATIONAL BUILDING CODE BUT DOES NOT MEET THE IMPACT RESISTANT REQUIREMENT FOR WINDBORNE DEBRIS REGIONS (REF. CHAPTER 16 FBC/IBC)

OPTIONAL ALUMINUM FULL VISION WINDOW LITE SECTIONS AVAILABLE (1/8" DSB, 1/8" ACRYLIC, 1/4" WIRE, 1/2" INSUL.). FULL VISION SECTIONS TO HAVE SAME REINFORCEMENT AS OTHER SECTIONS. OPTIONAL ACRYLIC IS PLASKOLITE OPTIX, AN APPROVED CC2 PLASTIC IN COMPLIANCE WITH IBC/FBC 2606.

OPTIONAL 24 X 8 DSB OR INSULATED WINDOW LITES AVAILABLE

SECTIONS ARE 1-3/4" THICK (MIN.) PANELS. EXTERIOR 27 GA. MIN. GALV. STEEL. INTERIOR 27 GA. MIN. GALV. STEEL. THE STUCCO EMBOSSED STEEL TEXTURE IS PREPAINTED WITH A BAKED POLYESTER PAINT. OPTIONAL MINOR RIBS ARE PLACED EVERY 4 INCHES ALONG THE WIDTH OF THE EXTERIOR PANELS.

12 GA. GALV. STEEL TOP ROLLER BRACKET. EACH BRACKET ATTACHED W/ (4) #14x5/8" SHEET METAL SCREWS. ADJUSTABLE SLIDE ATTACHED TO TOP BRACKET WITH (2) 1/4"x1/2" BOLTS AND NUTS PER BRACKET.

3' TALL x 20 GA. GALV. STEEL U-BARS, 2 PER SECTION. EACH U-BAR TO BE ATTACHED WITH TWO 1/4"x3/4" SELF TAPPING SCREWS PER STILE LOCATION.

URETHANE CORE DENSITY 2.4 P.C.F.

INTERMEDIATE ROLLER HINGES. SEE HINGE DETAIL FOR SPECIFICATIONS.

TWO POINT LOCKING

THIS DOOR MEETS OR EXCEEDS THE DESIGN LOADS FOR THE ULTIMATE WIND SPEEDS LISTED BELOW ACCORDING TO THE FLORIDA BUILDING CODE OR THE INTERNATIONAL BUILDING CODE (BASED ON ASCE7-10) FOR THE FOLLOWING CONDITIONS: 1) ENCLOSED BUILDING, 2) DOOR HAS 2' OF WIDTH IN BUILDING'S END ZONE, 3) ANY ROOF SLOPE, AND 4) TESTING IN ACCORDANCE WITH ANSI/DASMA 108. SITE-SPECIFIC CALCULATIONS BY A QUALIFIED DESIGN PROFESSIONAL MAY DIFFER.

ULTIMATE WIND SPEED (MPH)	160	165	175	185	200
EXPOSURE CATEGORY	B, C, D	B, C, D	B, C	B, C	B
MEAN ROOF HEIGHT	25'	15'	25'	15'	30'

D

C

B

A

D

C

B

A

SIDE ELEVATION STANDARD-LIFT TRACK DETAILS

HINGE DETAIL

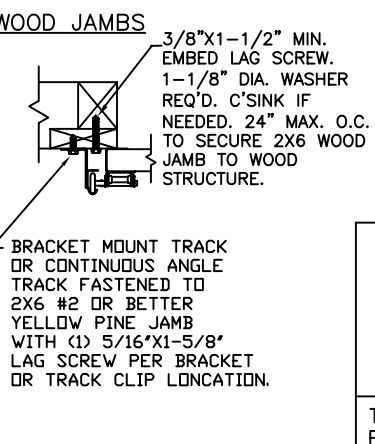
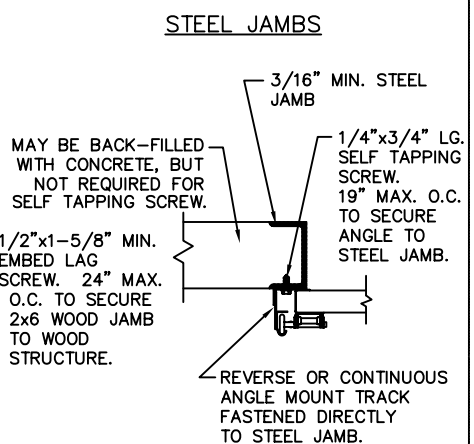
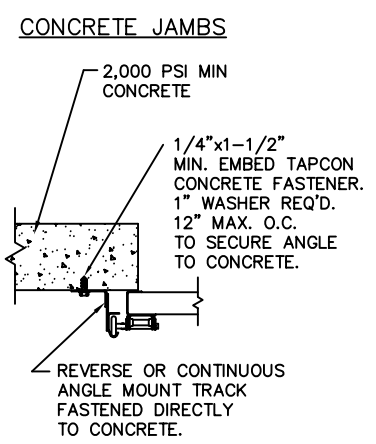
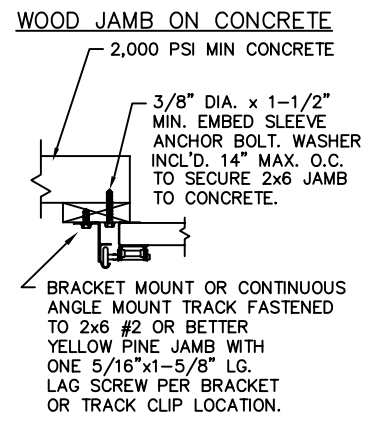
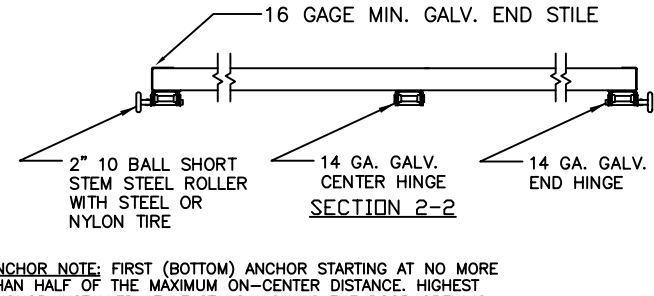
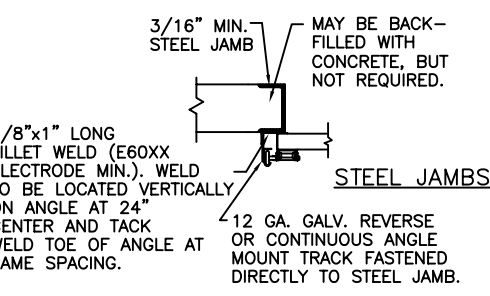
DOOR WIDTH: 14'-2"

SECTION 1 - 1

DESIGN LOADS: +37.0 & -42.0 PSF  
TEST LOADS +55.5 & -63.0 PSF

DESIGN ENGINEER: MARK WESTERFIELD, P.E.  
FLORIDA P.E. #48495, NC P.E. #23832, TEXAS P.E. #91513

MPC: C-DSIU-1D477



THE DESIGN OF THE SUPPORTING STRUCTURAL ELEMENTS IS THE RESPONSIBILITY OF THE BUILDING ENGINEER OR ARCHITECT OF RECORD.

CLOPAY CORP. ALL RIGHTS RESERVED.

Third Angle Projection

Unless Stated Otherwise TOLERANCES are

.0	= ±.031
.00	= ±.015
.000	= ±.005
.0000	= ±.001
Degrees	= ± 1/2'

Unless Stated Otherwise DIMENSIONS ARE IN INCHES.

**Glopay** Building Products Company  
8585 Duke Boulevard  
Mason, OH 45040 USA  
Tel. No. 513-770-4800  
Fax No. 513-770-4853

WINDLOAD RATING

**W6**

DESCRIPTION: MODEL 37XX URETHANE INSULATED DOOR	SCALE: N/A	DWG. SIZE: B
DRAWN BY: BFA	DATE: 12/07/07	SHEET 1 OF 1
CHECKED BY: S.HAMILTON	DATE: 12/07/07	DWG. NO.: 104043