

CLOPAY/IDEAL/HOLMES
 3717/C7X17 - 27GA 1-3/4" THICK RIBBED DOOR
 3718/C7X18 - 27GA 1-3/4" THICK FLUSH DOOR
 3720/C7X20/240U - 27GA 2" THICK RIBBED DOOR
 3722/COX22 - 20GA 2" THICK FLUSH DOOR

14'-2" WIDE (MAX) X 18'-0" HIGH (MAX)

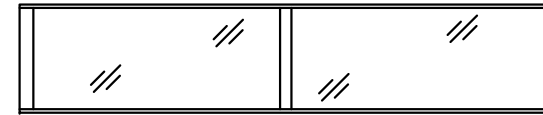
REVISIONS

REV. NO.	ZONE:	DATE:	ECN NO.	APPVD:	DESCRIPTION
00	-	12/26/07	-	SH	INITIAL RELEASE
01	-	11/2008	-	-	ADDED MPC; UPDATED JAMB ATTACHMENT.
02	-	02/2012	-	-	UPDATED WINDCODE CHART

THE OPTIONAL GLAZING SHOWN ON THIS DRAWING MEETS THE WIND LOAD REQUIREMENTS OF THE FLORIDA BUILDING CODE OR INTERNATIONAL BUILDING CODE BUT DOES NOT MEET THE IMPACT RESISTANT REQUIREMENT FOR WINDBORNE DEBRIS REGIONS (REF. CHAPTER 16 FBC/IBC)

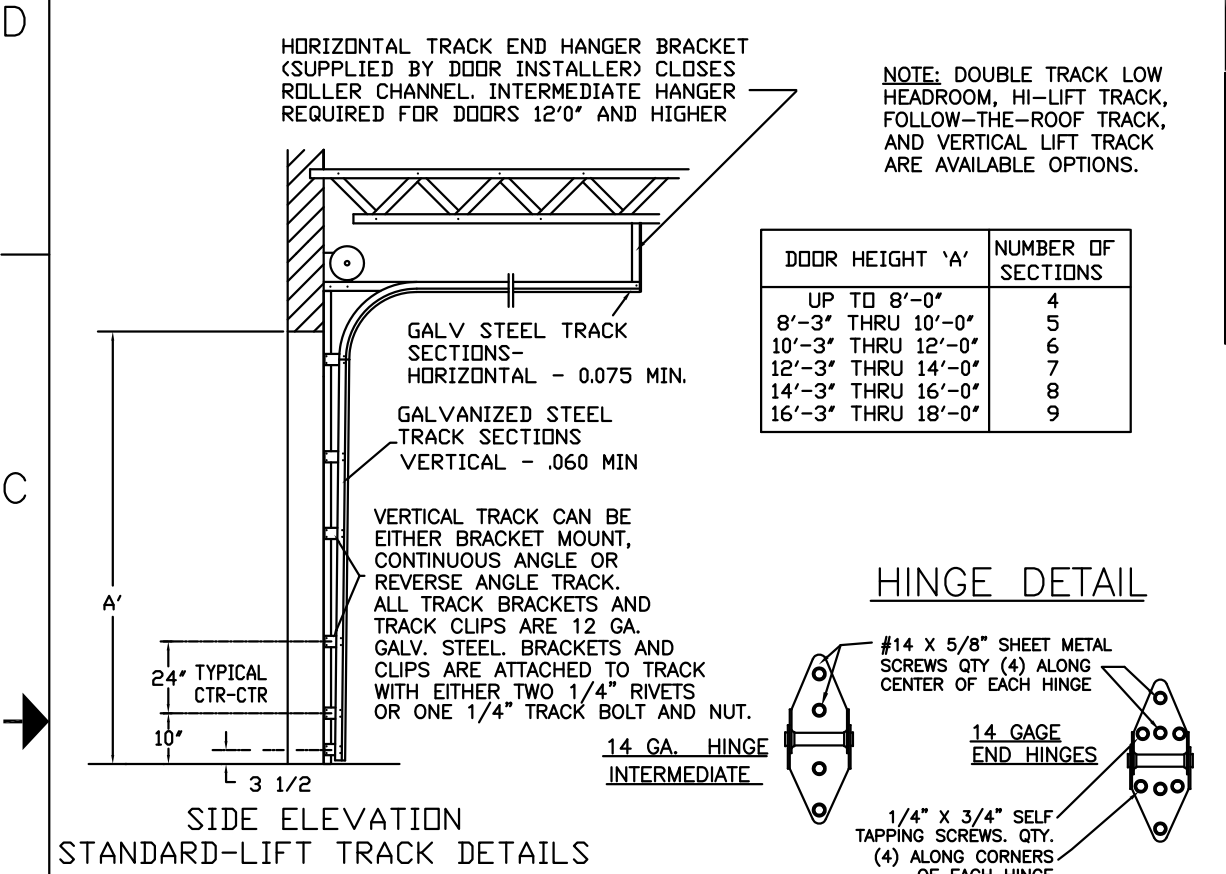
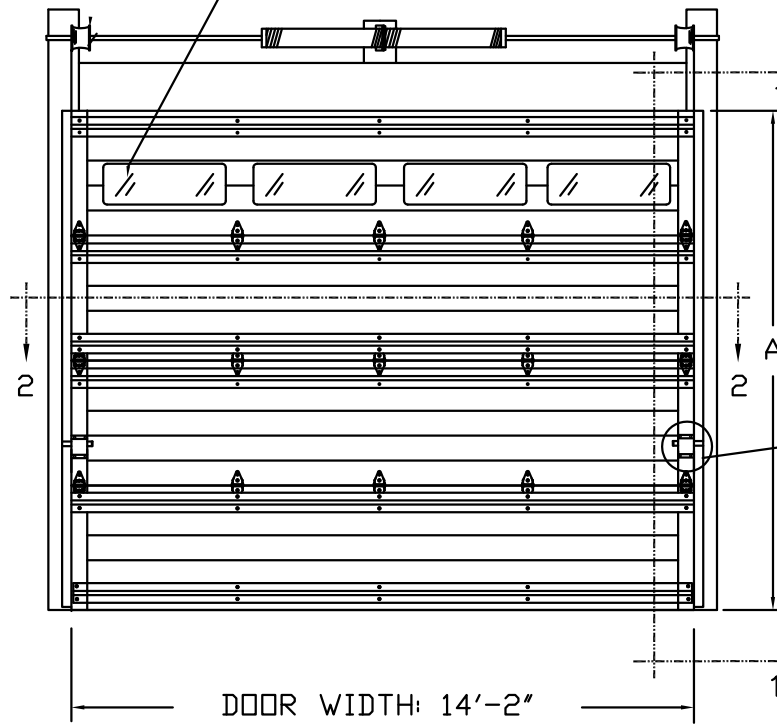
THIS DOOR MEETS OR EXCEEDS THE DESIGN LOADS FOR THE ULTIMATE WIND SPEEDS LISTED BELOW ACCORDING TO THE FLORIDA BUILDING CODE OR THE INTERNATIONAL BUILDING CODE (BASED ON ASCE7-10) FOR THE FOLLOWING CONDITIONS: 1) ENCLOSED BUILDING, 2) DOOR HAS 2' OF WIDTH IN BUILDING'S END ZONE, 3) ANY ROOF SLOPE, AND 4) TESTING IN ACCORDANCE WITH ANSI/DASMA 108. SITE-SPECIFIC CALCULATIONS BY A QUALIFIED DESIGN PROFESSIONAL MAY DIFFER.

ULTIMATE WIND SPEED (MPH)	145	150	160	165	185
EXPOSURE CATEGORY	B, C, D	B, C, D	B, C	B, C	B
MEAN ROOF HEIGHT	25'	15'	25'	15'	30'



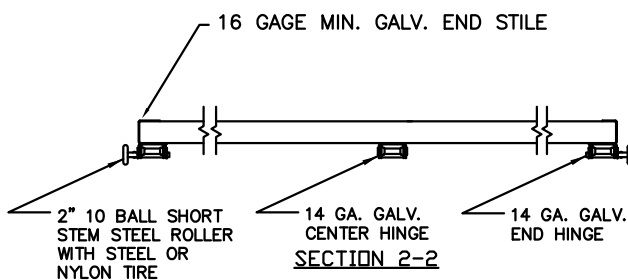
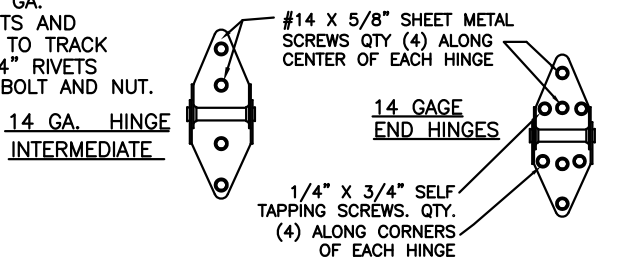
OPTIONAL ALUMINUM FULL VISION WINDOW LITE SECTIONS AVAILABLE (1/8" DSB, 1/8" ACRYLIC, 1/4" WIRE, 1/2" INSUL.). FULL VISION SECTIONS TO HAVE SAME REINFORCEMENT AS OTHER SECTIONS. OPTIONAL ACRYLIC IS PLASKOLITE OPTIX, AN APPROVED CC2 PLASTIC IN COMPLIANCE WITH IBC/FBC 2606.

OPTIONAL 24 X 8 DSB OR INSULATED WINDOW LITES AVAILABLE



DOOR HEIGHT 'A'	NUMBER OF SECTIONS
UP TO 8'-0"	4
8'-3" THRU 10'-0"	5
10'-3" THRU 12'-0"	6
12'-3" THRU 14'-0"	7
14'-3" THRU 16'-0"	8
16'-3" THRU 18'-0"	9

HINGE DETAIL



SECTIONS ARE 1-3/4" THICK (MIN.) PANELS. EXTERIOR 27 GA. MIN. GALV. STEEL INTERIOR 27 GA. MIN. GALV. STEEL. THE STUCCO EMBOSSED STEEL TEXTURE IS PREPAINTED WITH A BAKED POLYESTER PAINT. OPTIONAL MINOR RIBS ARE PLACED EVERY 4 INCHES ALONG THE WIDTH OF THE EXTERIOR PANELS.

URETHANE CORE DENSITY 2.4 P.C.F.

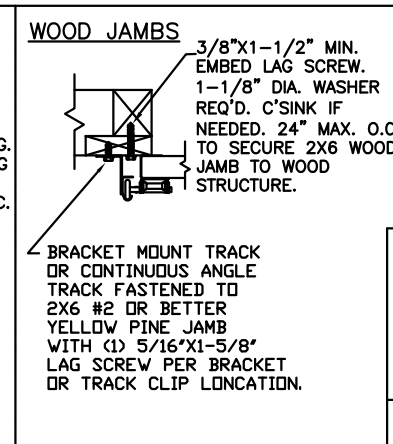
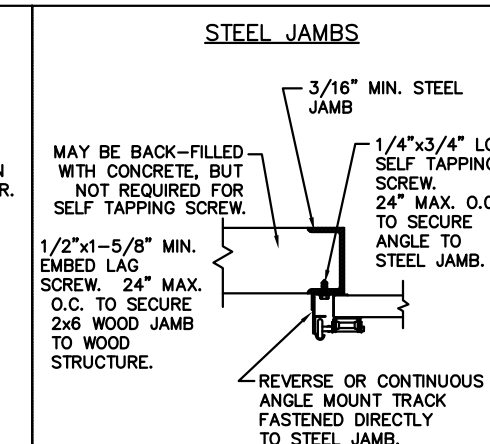
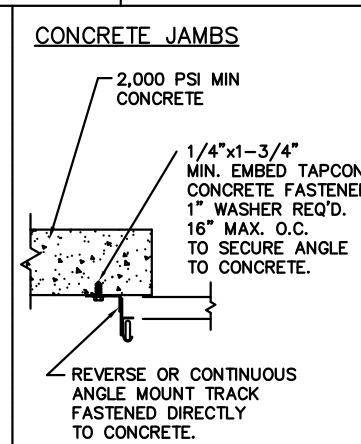
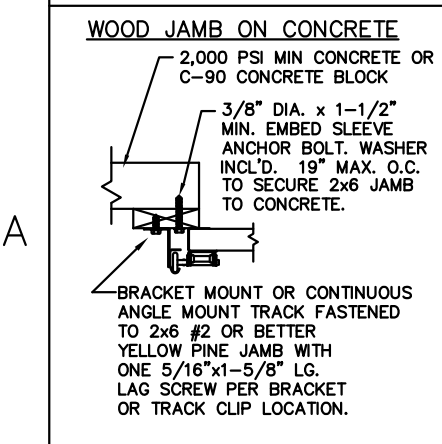
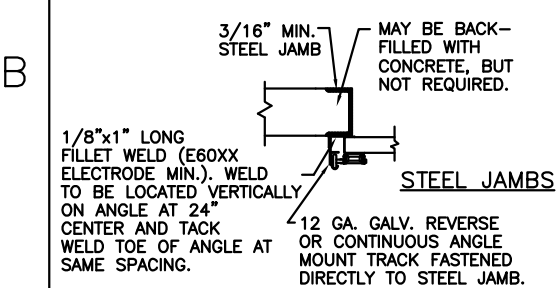
12 GA. GALV. STEEL TOP ROLLER BRACKET. EACH BRACKET ATTACHED W/(4) #14x5/8" SHEET METAL SCREWS. ADJUSTABLE SLIDE ATTACHED TO TOP BRACKET WITH (2) 1/4"x1/2" BOLTS AND NUTS PER BRACKET.

(1) 3" TALL x 20 GA. GALV. STEEL U-BAR AT THE TOP OF EACH SECTION; A SECOND U-BAR IS PLACED AT THE BOTTOM OF EVERY OTHER SECTION STARTING WITH THE BOTTOM SECTION. EACH U-BAR TO BE ATTACHED WITH TWO 1/4"x3/4" SELF TAPPING SCREWS PER STILE LOCATION.

INTERMEDIATE ROLLER HINGES. SEE HINGE DETAIL FOR SPECIFICATIONS.

SECTION 1 - 1

BOTTOM SECTION USES ALUM. EXTRUDED RETAINER FOR FLEXIBLE VINYL ASTRAGAL



THE DESIGN OF THE SUPPORTING STRUCTURAL ELEMENTS IS THE RESPONSIBILITY OF THE BUILDING ENGINEER OR ARCHITECT OF RECORD.

DESIGN ENGINEER: MARK WESTERFIELD, P.E. FLORIDA P.E. #48495, NC P.E. #23832, TEXAS P.E. #91513

DESIGN LOADS: +30.0 & -34.0 PSF TEST LOADS +45.0 & -51.0 PSF

CLOPAY CORP. ALL RIGHTS RESERVED.	Unless Stated Otherwise TOLERANCES are		8585 Duke Boulevard Mason, OH 45040 USA Tel. No. 513-770-4800 Fax No. 513-770-4853	MPC: C-DSIU-1D477	
	.0 = ±.031	.00 = ±.015		WINDLOAD RATING W5	
Third Angle Projection	Unless Stated Otherwise DIMENSIONS ARE IN INCHES.		DESCRIPTION: MODEL 37XX URETHANE INSULATED DOOR		
	DRAWN BY: BFA	DATE: 12/18/07	SCALE: N/A	DWG. B	
	CHECKED BY: S.HAMILTON	DATE: 12/18/07	SHEET 1 OF 1	SIZE	
	DWG. NO.: 104044	VER: IBC			