

4

3

2

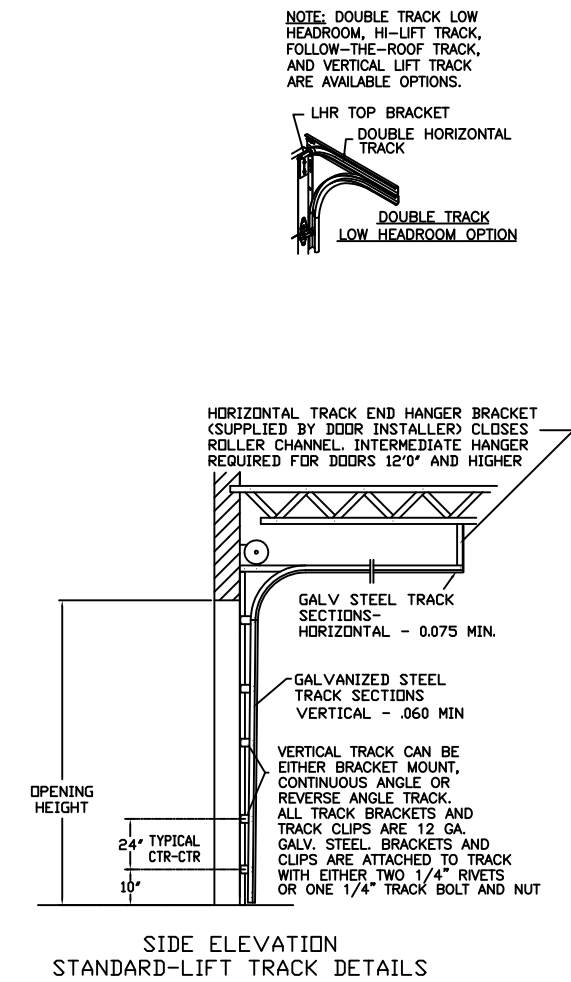
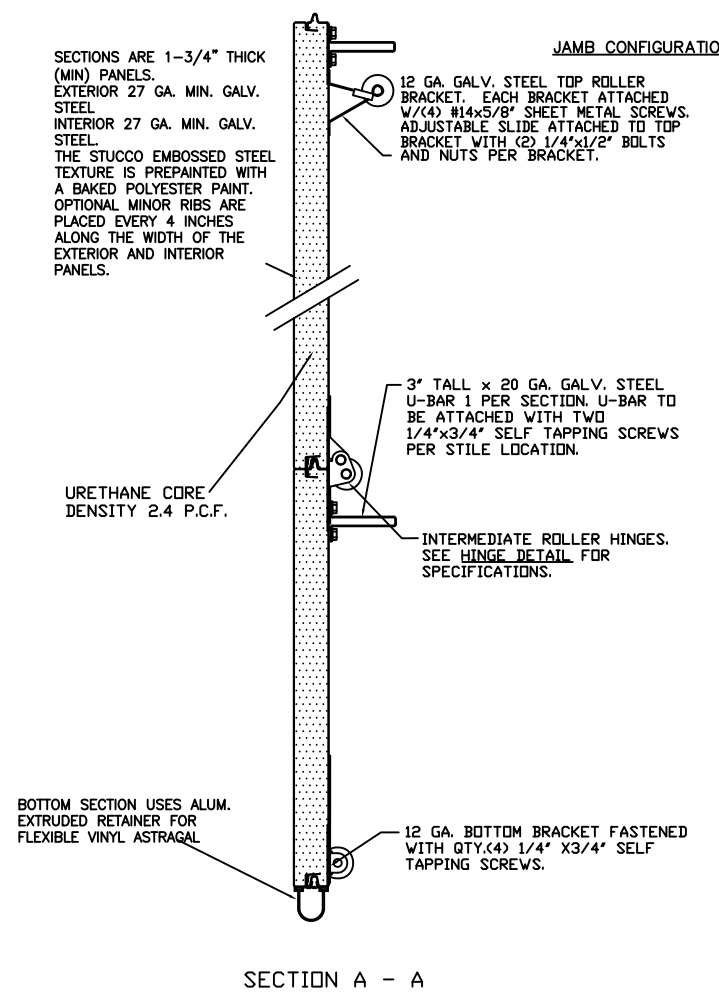
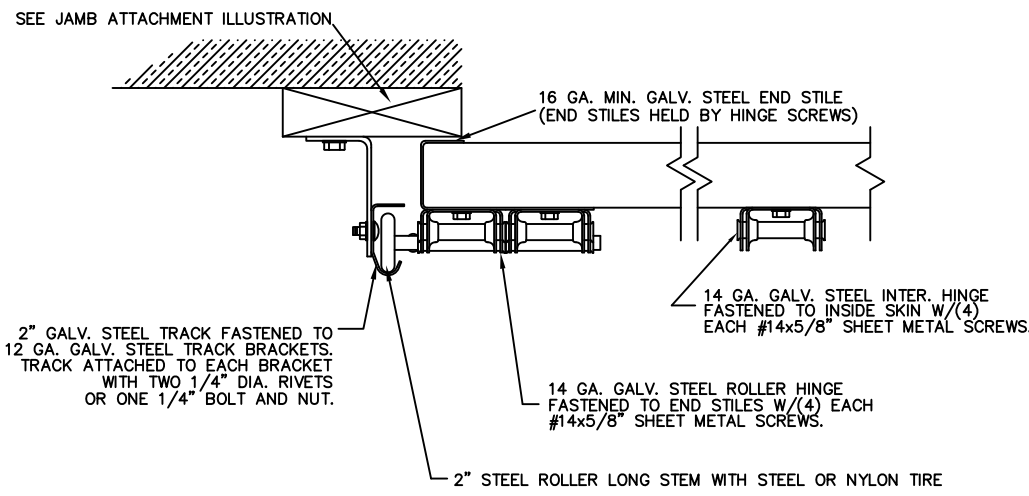
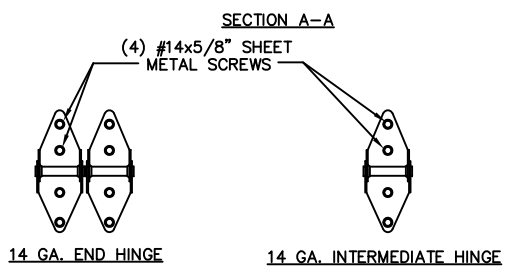
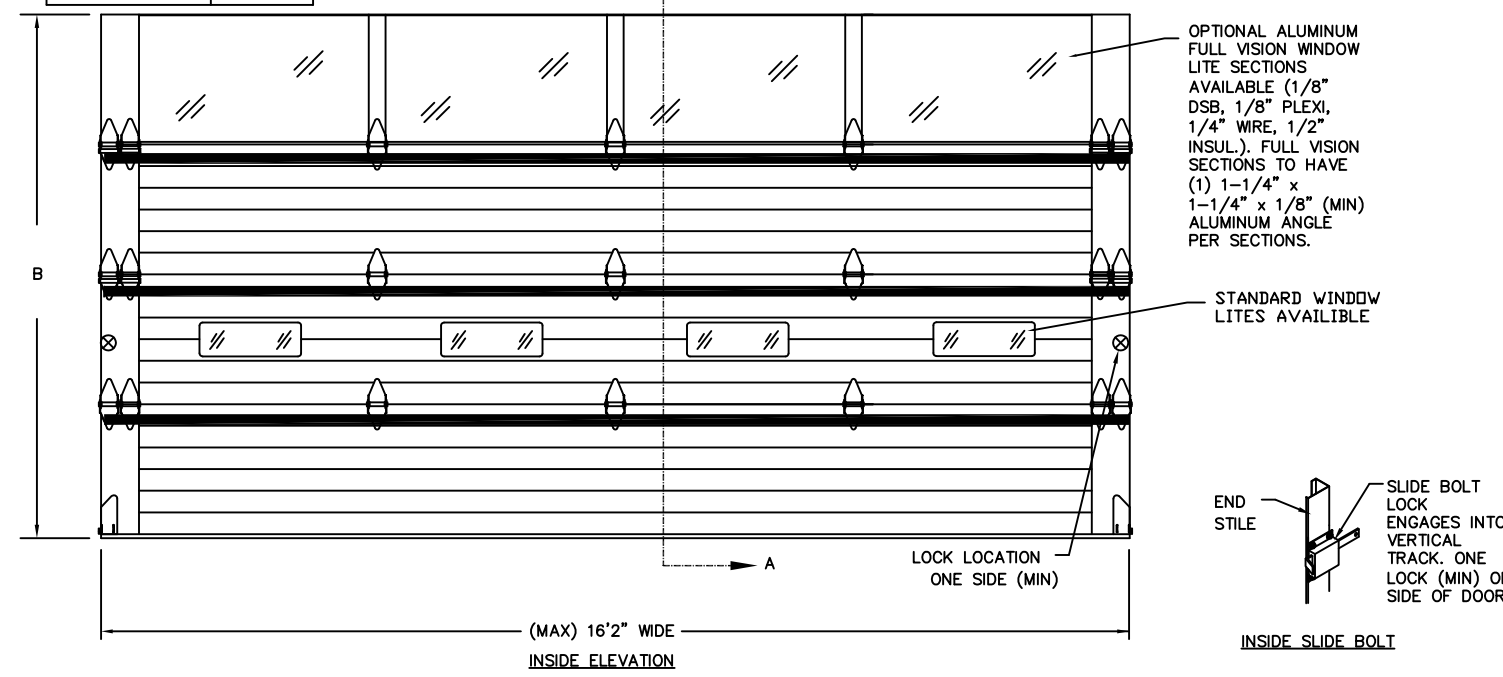
DOOR HEIGHT 'B'	NUMBER OF SECTIONS
3'-0" THRU 4'-0"	2
4'-6" THRU 6'-0"	3
6'-3" THRU 8'-0"	4
8'-3" THRU 10'-0"	5
10'-3" THRU 12'-0"	6
12'-3" THRU 14'-0"	7
14'-3" THRU 16'-0"	8
16'-3" THRU 18'-0"	9

MAX DOOR SIZE 16'2"W x 18'0"H

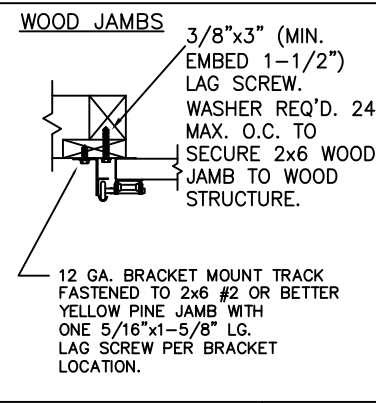
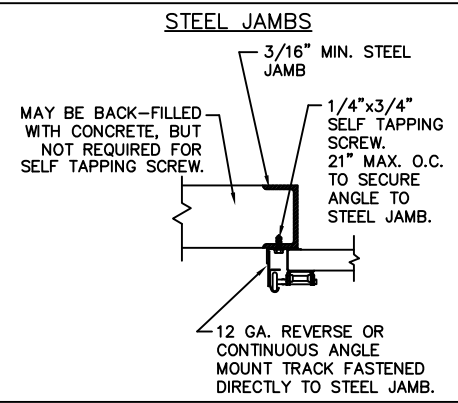
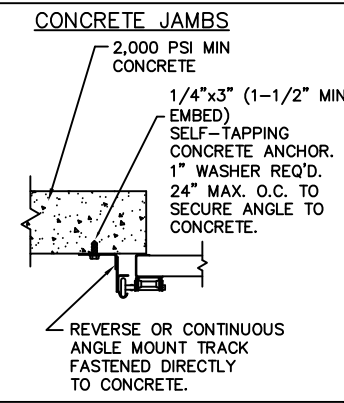
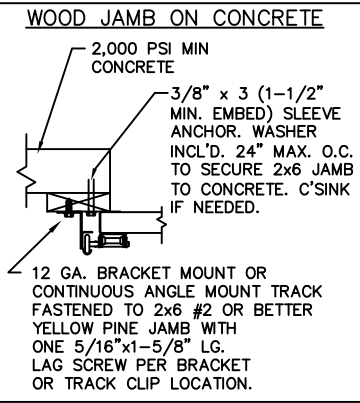
BRAND	1 3/4" THICK MODELS	2" THICK MODELS
CLOPAY	3717W1, 3718W1	3720W1, 3722W1
HOLMES	-	240UW1
IDEAL	C7X17W1, C7X18W1	C7X20W1, C0X22W1

REVISIONS					
REV. NO.	ZONE:	DATE:	ECN NO.	APPVD:	DESCRIPTION
00	-	03/31/08	ER1173	SH	INITIAL RELEASE

D
B
C



ANCHOR NOTE: FIRST (BOTTOM) ANCHOR STARTING AT NO MORE THAN HALF OF THE MAXIMUM ON-CENTER DISTANCE. HIGHEST ANCHOR INSTALLED AT LEAST AS HIGH AS THE DOOR OPENING.



Unless Stated Otherwise TOLERANCES are

.0 = ±.03

.00 = ±.015

.000 = ±.005

.0000 = ±.001

Degrees = ±1/2"

Third Angle Projection

Unless Stated Otherwise DIMENSIONS ARE IN INCHES.

Clopay Building Products Company

8585 Duke Boulevard Mason, OH 45040
Tel. No. 1-513-381-4800
Fax No. 1-513-762-3519

DESIGN ENGINEER: MARK WESTERFIELD, P.E.
FLORIDA P.E. #48495
NC P.E. #23832
TEXAS P.E. #91513

DESIGN LOADS: +13.5 PSF & -13.5 PSF
TEST LOADS: +20.0 PSF & -20.0 PSF

DESCRIPTION: MODEL 3717W1 16' WIDE

DRAWN BY: BFA DATE: 1/31/08 SCALE: NTS DWG. B

CHECKED BY: SH DATE: 1/31/08 SHEET 1 OF 1 SIZE B

DWG. NO.: 104083 REV: 00

PART NO.:

CLOPAY WINDLOAD RATING

W1

4

3

2

1

D
B
C

A