

4

3

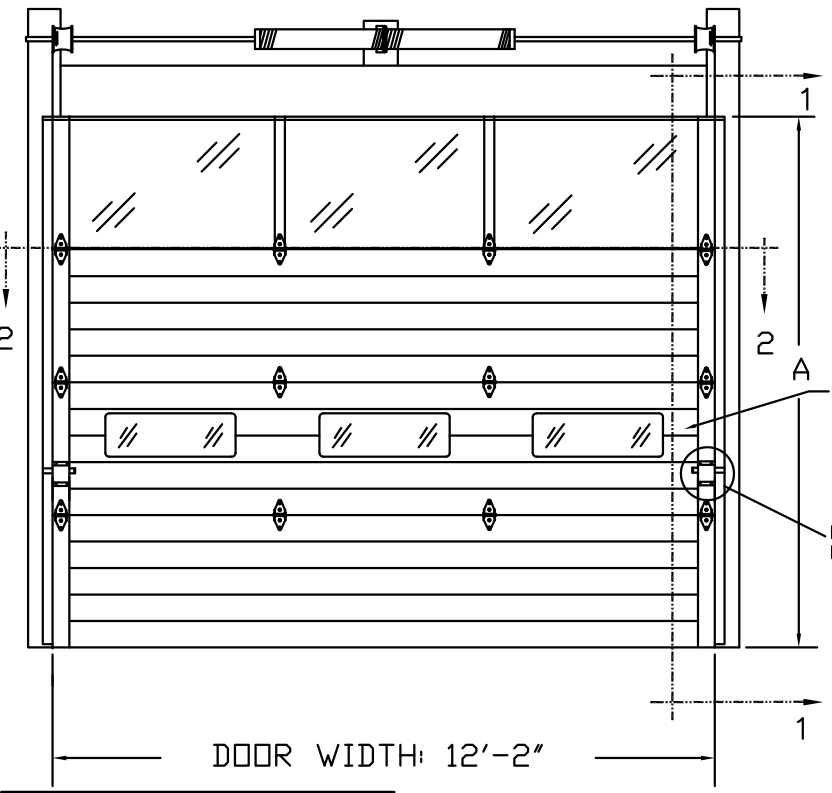
2

1

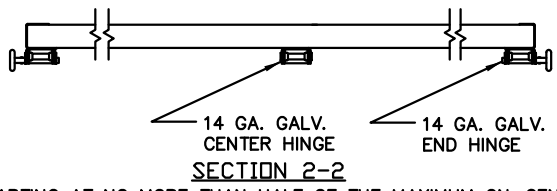
BRAND	1 3/4" THICK MODELS	2" THICK MODELS
CLOPAY	3717W1, 3718W1	3720W1, 3722W1
HOLMES	-	240UW1
IDEAL	C7X17W1, C7X18W1	C7X20W1, C0X22W1

MAX DOOR SIZE  
12'-2" WIDE X 18'-0" HIGH

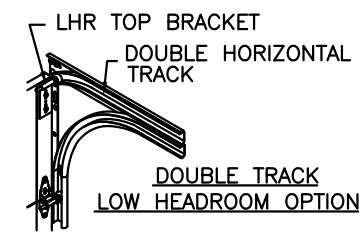
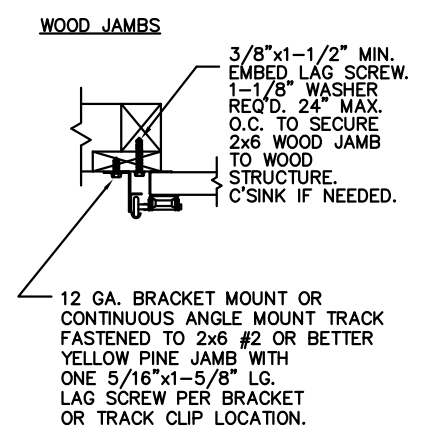
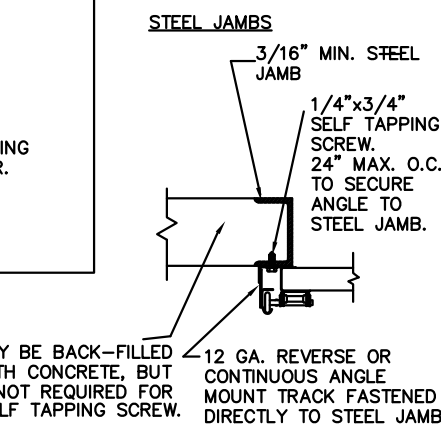
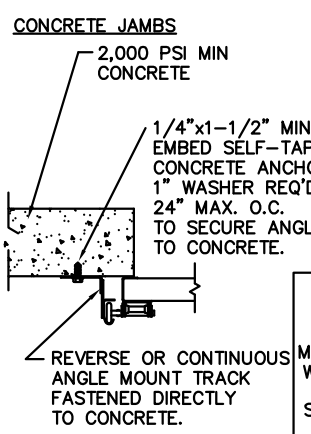
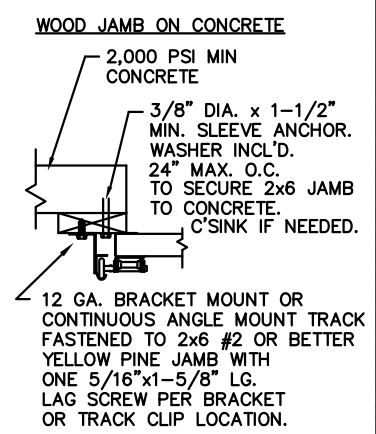
REVISIONS					
REV. NO.	ZONE:	DATE:	ECN NO.	APPVD:	DESCRIPTION
00	-	03/31/08	ER1173	SH	INITIAL RELEASE



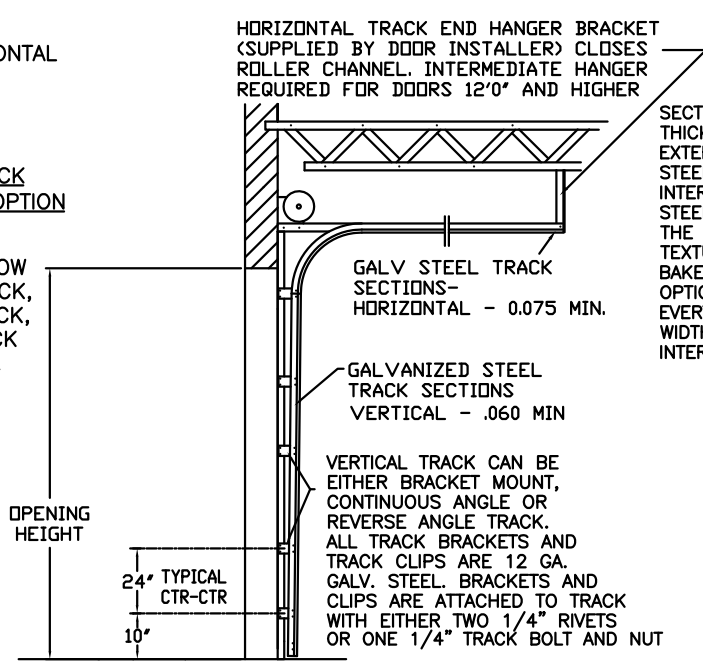
DOOR HEIGHT 'A'	NUMBER OF SECTIONS
3'-0" THRU 4'-0"	2
4'-6" THRU 6'-0"	3
6'-3" THRU 8'-0"	4
8'-3" THRU 10'-0"	5
10'-3" THRU 12'-0"	6
12'-3" THRU 14'-0"	7
14'-3" THRU 16'-0"	8
16'-3" THRU 18'-0"	9



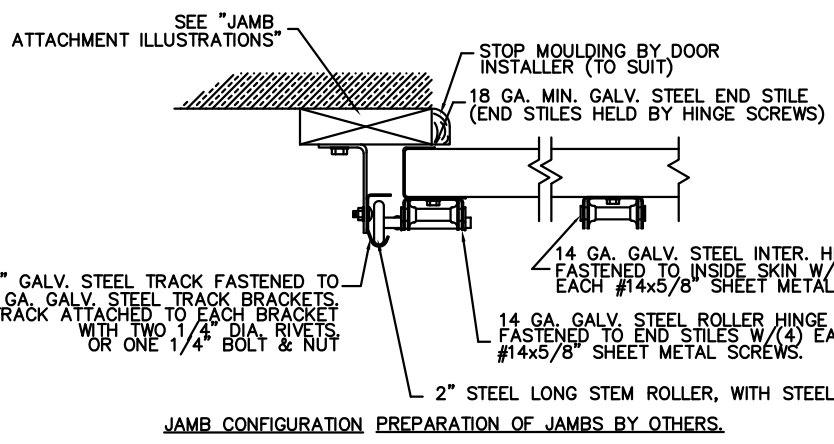
ANCHOR NOTE: FIRST (BOTTOM) ANCHOR STARTING AT NO MORE THAN HALF OF THE MAXIMUM ON-CENTER DISTANCE. HIGHEST ANCHOR INSTALLED AT LEAST AS HIGH AS THE DOOR OPENING.



NOTE: DOUBLE TRACK LOW HEADROOM, HI-LIFT TRACK, FOLLOW-THE-ROOF TRACK, AND VERTICAL LIFT TRACK ARE AVAILABLE OPTIONS.



SIDE ELEVATION STANDARD-LIFT TRACK DETAILS

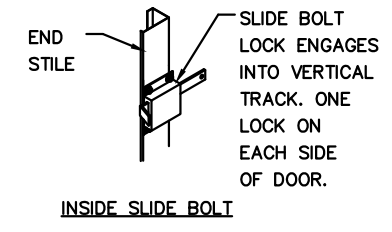


JAMB CONFIGURATION PREPARATION OF JAMBS BY OTHERS.

SECTIONS ARE 1-3/4" (MIN) THICK PANELS. EXTERIOR 27 GA. MIN. GALV. STEEL INTERIOR 27 GA. MIN. GALV. STEEL. THE STUCCO EMBOSSED STEEL TEXTURE IS PREPAINTED WITH A BAKED POLYESTER PAINT. OPTIONAL MINOR RIBS ARE PLACED EVERY 4 INCHES ALONG THE WIDTH OF THE EXTERIOR AND INTERIOR PANELS.

URETHANE CORE DENSITY 2.4 P.C.F.

12 GA. GALV. STEEL TOP ROLLER BRACKET. EACH BRACKET ATTACHED W/(3) #14x5/8" SHEET METAL SCREWS. ADJUSTABLE SLIDE ATTACHED TO TOP BRACKET WITH (1) 1/4"x1/2" BOLT AND NUT PER BRACKET.



INTERMEDIATE ROLLER HINGES. SEE HINGE DETAIL FOR SPECIFICATIONS.

DESIGN ENGINEER: MARK WESTERFIELD, P.E. FLORIDA P.E. #48495 NC P.E. #23832 TEXAS P.E. #91513

12 GA. BOTTOM BRACKET FASTENED WITH QTY.(4) 1/4" X3/4" SELF TAPPING SCREWS.

DESIGN LOADS: +13.5 & -13.5 PSF TEST LOADS +20 & -20 PSF

SECTION 1 - 1

PART NO.: -

CLOPAY WINDLOAD RATING W1

NOTICE: Confidential/Proprietary information of CLOPAY BUILDING PRODUCTS CO. is contained herein and may not be disclosed, used, duplicated, made available, or distributed without its prior consent. Failure to observe this notice may result in liability for any damages and losses resulting therefrom.

Third Angle Projection

Unless Stated Otherwise TOLERANCES are  
.0 = ±.031  
.00 = ±.015  
.000 = ±.005  
.0000 = ±.001  
Degrees = ±1/2"

Unless Stated Otherwise DIMENSIONS ARE IN INCHES.

		8585 Duke Boulevard Mason, OH 45040 USA Tel. No. 513-770-4800 Fax No. 513-770-4853	
DESCRIPTION: MODEL 3717W1 12' WIDE			
DRAWN BY: BFA	DATE: 2/12/08	SCALE: N/A	DWG. SIZE B
CHECKED BY: SH	DATE: 2/12/08	SHEET 1 OF 1	REV. NO. 00
DWG. NO.: 104091			

4

3

2

1