

CLOPAY / IDEAL / HOLMES / BRAND
 3720 / C7X20 / 240U / 27GA 2" THICK RIBBED MODELS
 3722 / COX22 / -- / 20GA 2" THICK FLUSH MODELS

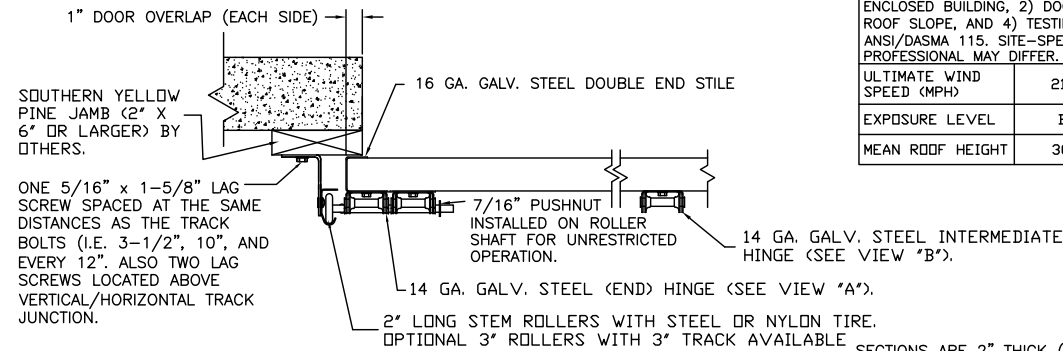
THIS DOOR MEETS THE REQUIREMENTS OF THE
 LARGE MISSILE IMPACT AND CYCLIC TESTING.

| REV | DATE | DESCRIPTION |
|-----|---------|---|
| 00 | 1/2009 | PRE-RELEASE VERSION. |
| 01 | 12/2011 | CLARIFIED SECTION A-A; UPDATED WIND SPEEDS. |

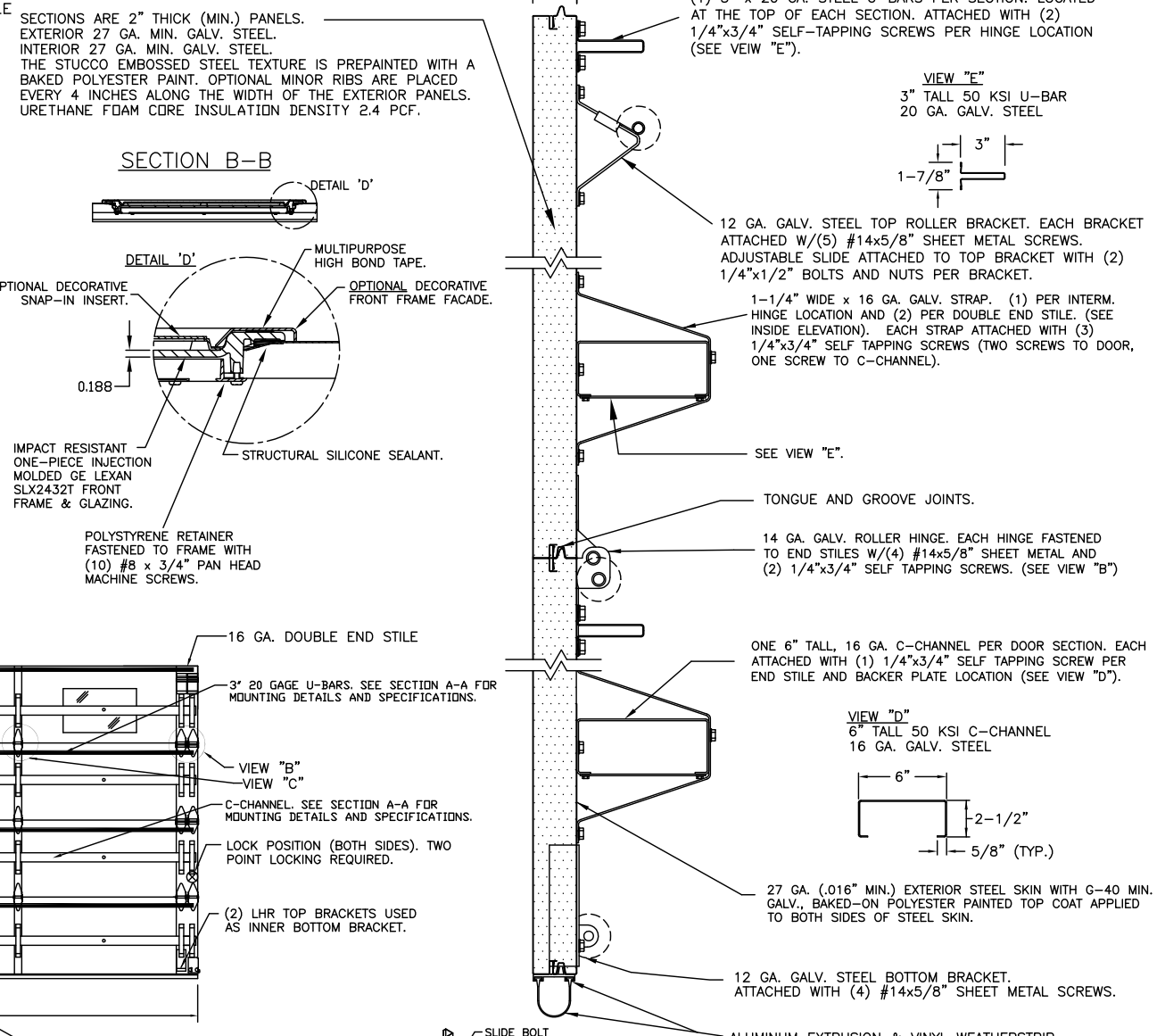
THIS DOOR MEETS OR EXCEEDS THE DESIGN LOADS FOR THE ULTIMATE WIND SPEEDS LISTED BELOW ACCORDING TO THE FLORIDA BUILDING CODE OR THE INTERNATIONAL BUILDING CODE (BASED ON ASCE7-10) FOR THE FOLLOWING CONDITIONS: 1) ENCLOSED BUILDING, 2) DOOR HAS 2' OF WIDTH IN BUILDING'S END ZONE, 3) ANY ROOF SLOPE, AND 4) TESTING IN ACCORDANCE WITH ANSI/DASMA 108 AND ANSI/DASMA 115. SITE-SPECIFIC CALCULATIONS BY A QUALIFIED DESIGN PROFESSIONAL MAY DIFFER.

| ULTIMATE WIND SPEED (MPH) | 210 | 205 | 190 | 185 | 175 |
|---------------------------|-----|-----|-----|-----|-----|
| EXPOSURE LEVEL | B | C | C | D | D |
| MEAN ROOF HEIGHT | 30' | 15' | 30' | 15' | 30' |

JAMB CONFIGURATION



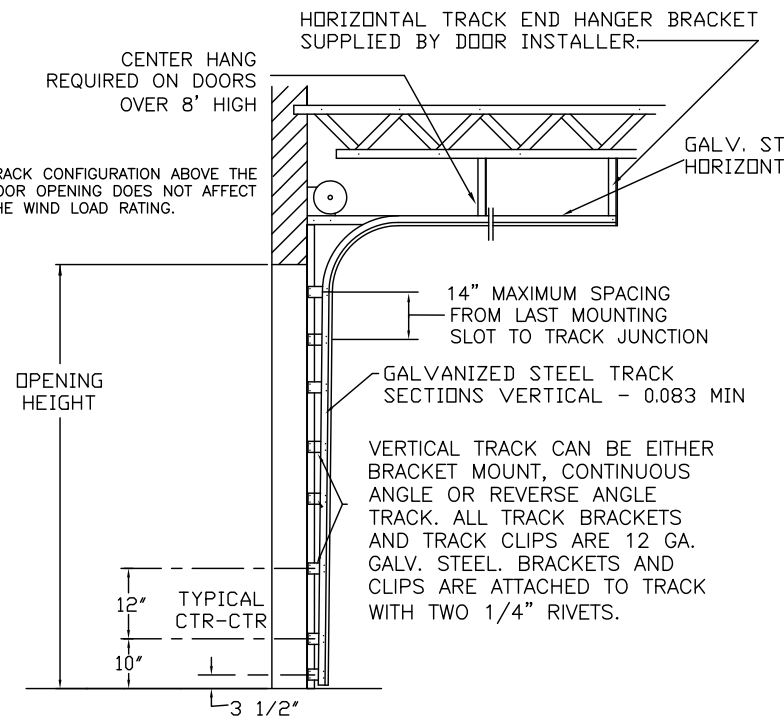
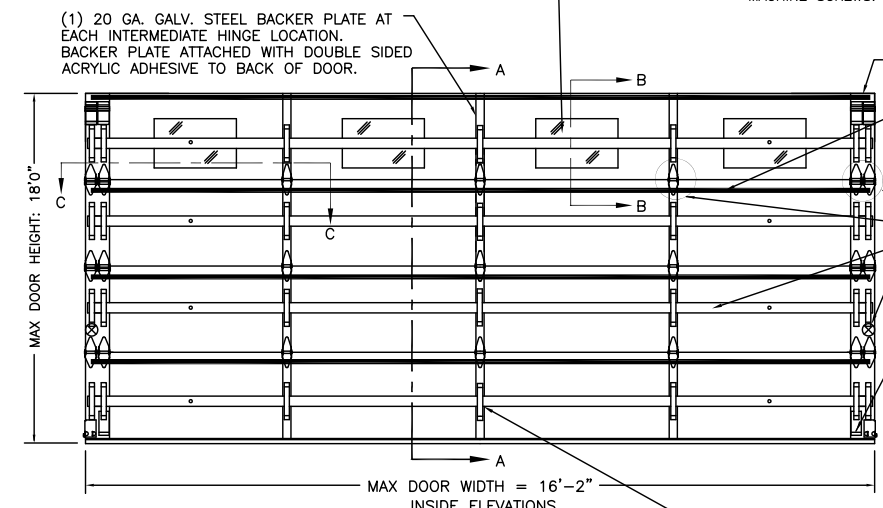
SECTION A-A (SIDE VIEW)



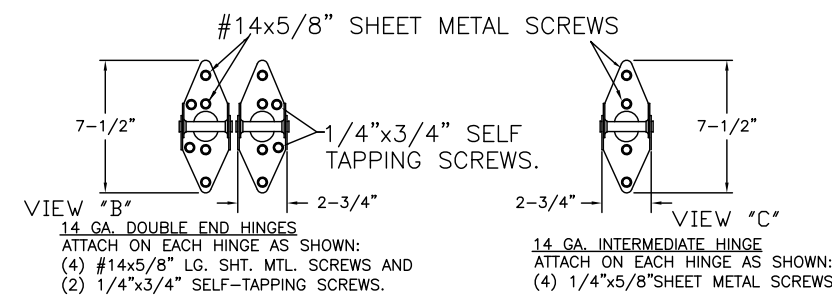
| DOOR HEIGHT 'A' | NUMBER OF SECTIONS |
|--------------------|--------------------|
| 8'-0" | 4 |
| 8'-3" THRU 10'-0" | 5 |
| 10'-3" THRU 12'-0" | 6 |
| 12'-3" THRU 14'-0" | 7 |
| 14'-3" THRU 16'-0" | 8 |
| 16'-3" THRU 18'-0" | 9 |

MAX. SECTION HEIGHT = 24"

OPTIONAL: ONE ROW OF IMPACT-RESISTANT GLAZING IN EITHER TOP SECTION (SHOWN) OR INTERMEDIATE SECTION (NOT SHOWN). MAX. GLAZING SIZE IS 18-1/2" x 11". GLAZING IS INJECTION MOLDED GE LEXAN SLX2432T, AN APPROVED CC2 PLASTIC IN ACCORDANCE WITH IBC/FBC 2606. SEE SECTION B-B FOR ASSEMBLY DETAILS.



AVAILABLE IN 3" TAPERED ANGLE TRACK (0.101" TRACK AND 0.101" X 3-1/4" X 2-3/4" ANGLE). TRACK BOLT AND LAG SCREW SPACING 3-1/2", 10" AND EVERY 12" AS NOTED ABOVE.



2x6 JAMB (OR LARGER) TO SUPPORTING STRUCTURE ATTACHMENT

FASTENER NOTE: FOR DOORS WITH BRACKET MOUNT TRACK, TRACK MUST BE MOUNTED TO WOOD JAMBS. FOR DOORS WITH CONTINUOUS ANGLE MOUNT TRACK, TRACK MAY BE MOUNTED TO WOOD JAMB OR DIRECTLY TO WALL USING THE FASTENERS PRESCRIBED IN THE TABLE BELOW.

| BUILDING TYPE | FASTENER TYPE | MAXIMUM ON-CENTER SPACING | STEEL WASHERS REQ'D WITH WOOD JAMBS? |
|--------------------------------|---|---------------------------|--------------------------------------|
| C-90 BLOCK (HOLLOW OR GROUDED) | 1/4" x 3" (1-1/4" EMBED) TAPCON CONCRETE ANCHOR (2-1/2" MIN. EDGE DISTANCE) | 4-1/2" | 1" O.D. |
| 3,000 PSI MIN. CONCRETE | 1/4" x 4" (1-3/4" EMBED) TAPCON CONCRETE ANCHOR (2-1/2" MIN. EDGE DISTANCE) | 12-1/2" | 1" O.D. |
| 3,000 PSI MIN. CONCRETE | 1/2" x 4" (2-1/4" EMBED) WEDGE ANCHOR (2" MIN. EDGE DISTANCE) | 12-1/2" | INCLUDED |
| WOOD FRAME | 1/2" x 4" (1-5/8" EMBED) LAG SCREW (ASTM A307, GRADE A) (2-1/2" MIN. EDGE DISTANCE) | 14-1/2" | 1" O.D. |
| 2,000 PSI MIN. CONCRETE | 1/2" x 4" (2-1/2" EMBED) SLEEVE ANCHOR (2-1/2" MIN. EDGE DISTANCE) | 14" | INCLUDED |

ANCHOR NOTE: FIRST (BOTTOM) ANCHOR STARTING AT NO MORE THAN HALF OF THE MAXIMUM ON-CENTER DISTANCE. HIGHEST ANCHOR INSTALLED AT LEAST AS HIGH AS THE DOOR OPENING.

AT THE CENTER OF EACH SECTION ATTACH THE 6"x2-1/4"x12 GA. STEEL PLATE TO THE UNDERSIDE OF THE THE C-CHANNEL WITH (4) 1/4"x3/4" SELF TAPPING SCREWS.



CLOPAY BUILDING PRODUCTS COMPANY
 8585 DUKE BLVD.
 MASON, OH 45040
 (513) 770-4800

MANUFACTURING PRODUCT CODE: C-DSIU-1F471
 DATE: 5/16/08
 DRAWN BY: BFA
 CHECKED BY: SH

DESIGN ENGINEER: SCOTT HAMILTON
 FLORIDA P.E. #63286

DESIGN LOADS: +50.0 P.S.F. & -56.0 P.S.F.
 TEST LOADS: +75.0 P.S.F. & -84.0 P.S.F.

| CLOPAY WINDLOAD RATING | MAX DOOR SIZE |
|------------------------|-----------------|
| W8 | 16'2"W x 18'0"H |

DESCRIPTION: COMMERCIAL URETHANE INSULATED GARAGE DOOR +50.0/-56.0 PSF DESIGN LOAD

| DRAWING NUMBER | VER. |
|----------------|------|
| B 104112 | IBC |

Clopay Corporation All Rights Reserved.