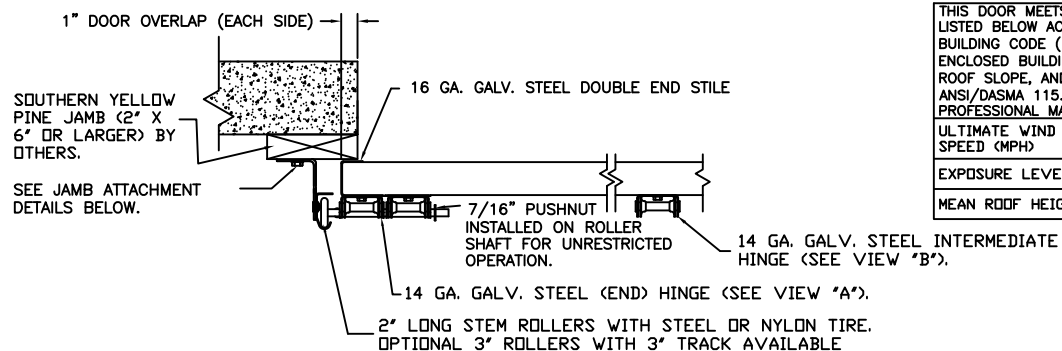


CLOPAY / IDEAL / HOLMES			
3717 / C7X17 / --	/ 27GA 1.75" THICK MINOR RIB DOOR		
3718 / C7X18 / --	/ 27GA 1.75" THICK FLUSH DOOR		
3720 / C7X20 / 240U	/ 27GA 2" THICK RIBBED MODELS		
3722 / COX22 / --	/ 20GA 2" THICK FLUSH MODELS		

JAMB CONFIGURATION



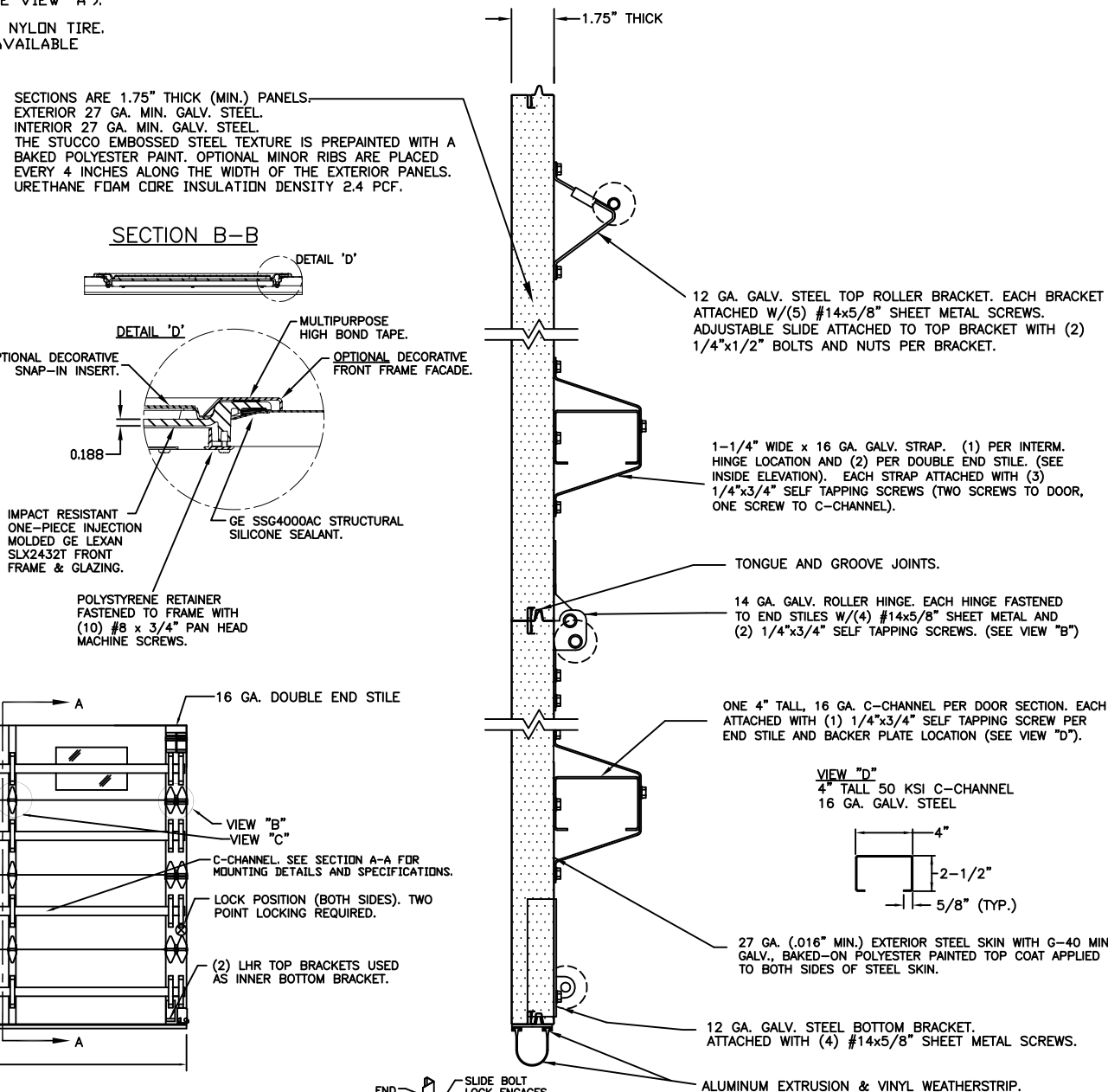
THIS DOOR MEETS THE REQUIREMENTS OF THE LARGE MISSILE IMPACT AND CYCLIC TESTING.

THIS DOOR MEETS OR EXCEEDS THE DESIGN LOADS FOR THE ULTIMATE WIND SPEEDS LISTED BELOW ACCORDING TO THE FLORIDA BUILDING CODE OR THE INTERNATIONAL BUILDING CODE (BASED ON ASCE7-10) FOR THE FOLLOWING CONDITIONS: 1) ENCLOSED BUILDING, 2) DOOR HAS 2' OF WIDTH IN BUILDING'S END ZONE, 3) ANY ROOF SLOPE, AND 4) TESTING IN ACCORDANCE WITH ANSI/DASMA 108 AND ANSI/DASMA 115. SITE-SPECIFIC CALCULATIONS BY A QUALIFIED DESIGN PROFESSIONAL MAY DIFFER.

ULTIMATE WIND SPEED (MPH)	210	210	195	190	180
EXPOSURE LEVEL	B	C	C	D	D
MEAN ROOF HEIGHT	30'	15'	30'	15'	30'

REV	DATE	DESCRIPTION
00	4/2009	PRE-RELEASE VERSION.
01	12/2011	ADDED 2-IN THK MODELS; REVISED WIND SPEEDS.
02	1/2012	REMOVED EXTRANEIOUS U-BAR CALLOUT.

SECTION A-A (SIDE VIEW)

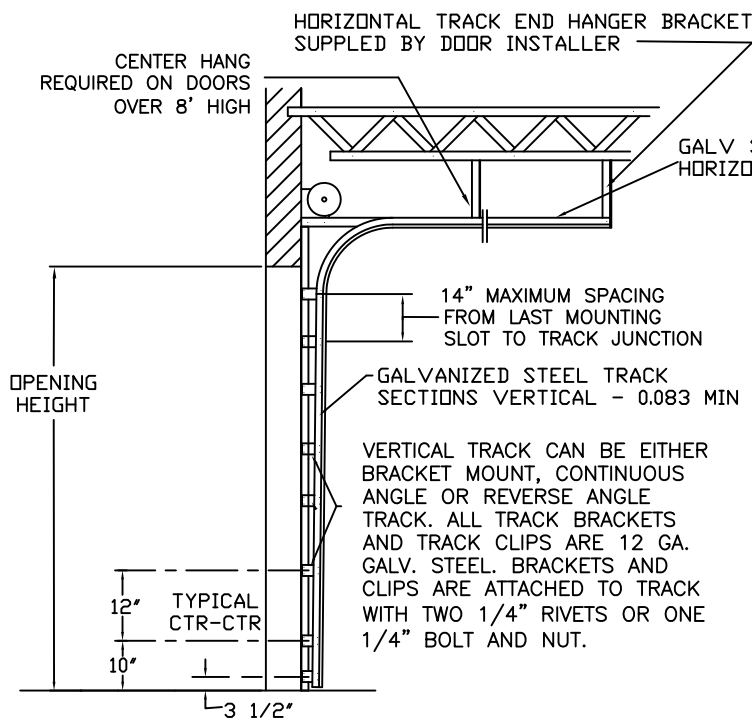
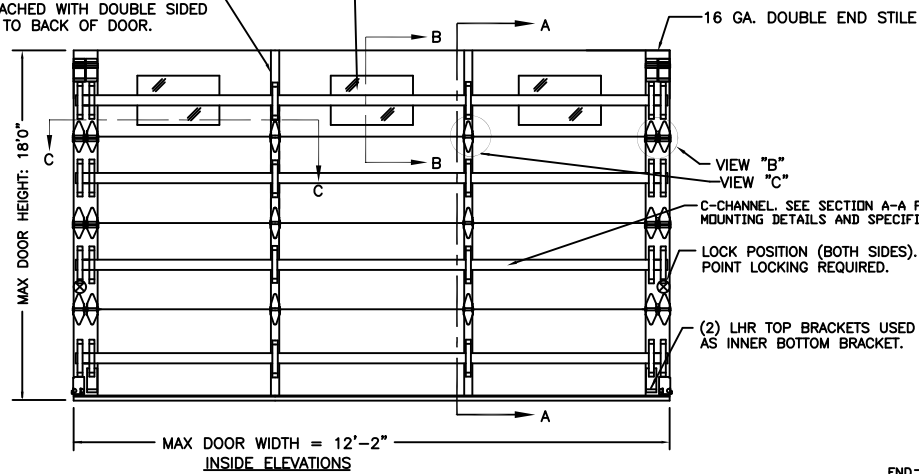


DOOR HEIGHT 'A'	NUMBER OF SECTIONS
8'-0"	4
8'-3" THRU 10'-0"	5
10'-3" THRU 12'-0"	6
12'-3" THRU 14'-0"	7
14'-3" THRU 16'-0"	8
16'-3" THRU 18'-0"	9

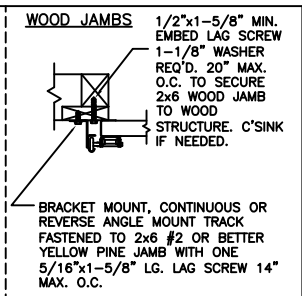
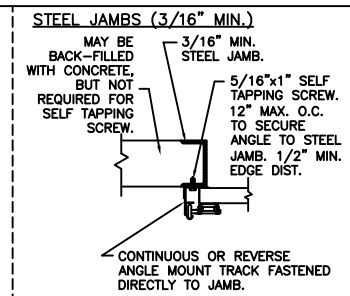
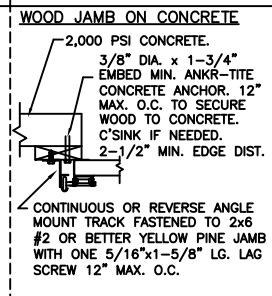
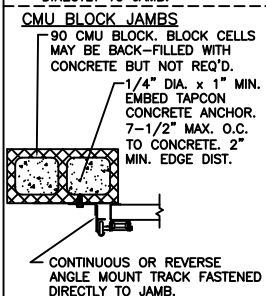
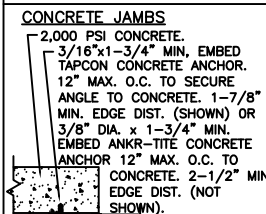
MAX. SECTION HEIGHT = 24'

OPTIONAL: ONE ROW OF IMPACT-RESISTANT GLAZING. GLAZING SIZE IS 18-1/2" X 11". GLAZING IS INJECTION MOLDED GE LEXAN SLX2432T, AN APPROVED CC2 PLASTIC IN ACCORDANCE WITH IBC/FBC 2606. SEE SECTION B-B FOR ASSEMBLY DETAILS.

(1) 20 GA. GALV. STEEL BACKER PLATE AT EACH INTERMEDIATE HINGE LOCATION. BACKER PLATE ATTACHED WITH DOUBLE SIDED ACRYLIC ADHESIVE TO BACK OF DOOR.



AVAILABLE IN 3" TAPERED ANGLE TRACK (0.101" TRACK AND 0.101" X 3-1/4" X 2-3/4" ANGLE). TRACK BOLT AND LAG SCREW SPACING 3-1/2", 10" AND EVERY 12" AS NOTED ABOVE.



ANCHOR NOTE: FIRST (BOTTOM) ANCHOR SHALL BE INSTALLED AT NO MORE THAN HALF OF THE MAXIMUM ON-CENTER DISTANCE. HIGHEST ANCHOR SHALL BE INSTALLED AT LEAST AS HIGH AS THE DOOR OPENING. HORIZONTAL JAMBS DO NOT TRANSFER LOAD.

DESIGN ENGINEER
MARK W. WESTERFIELD, P.E.
FLORIDA P.E. #48495, NC P.E. #23832, TEXAS P.E. #91513

DESIGN LOADS: +52.0 P.S.F. & -58.0 P.S.F.
TEST LOADS: +78.0 P.S.F. & -87.0 P.S.F.



CLOPAY BUILDING PRODUCTS COMPANY
8585 DUKE BLVD.
MASON, OH 45040
(513) 770-4800

SCALE:	N/A
DATE:	04/03/09
DRAWN BY:	SH
CHECKED BY:	SH

CLOPAY WINDLOAD RATING	W8	MAX DOOR SIZE:	12'2"W x 18'0"H
DESCRIPTION:	COMMERCIAL URETHANE INSULATED GARAGE DOOR +52.0/-58.0 PSF DESIGN LOAD		
DRAWING NUMBER:	B	104245	VER: IBC

Clopay Corporation All Rights Reserved.