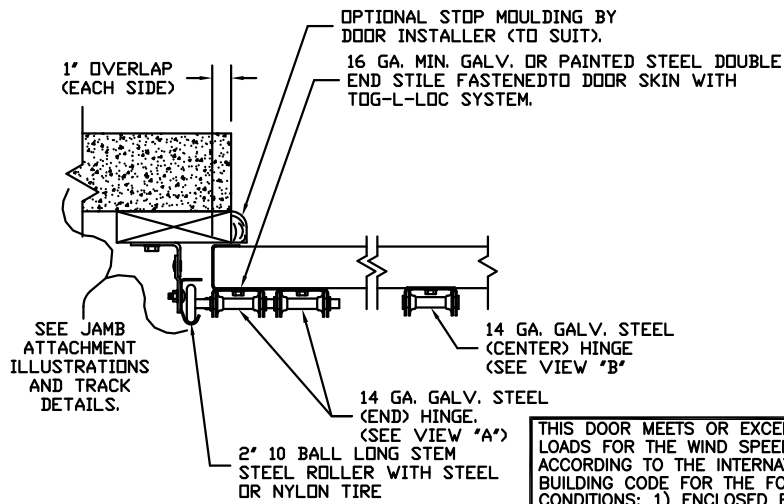
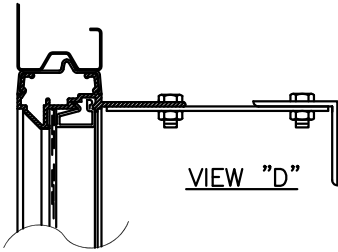


MAX 24'-2" WIDE X 18'-0" HIGH

CLOPAY / IDEAL / HOLMES	27GA 1.75" THICK MINOR RIB DOOR
3717 / C7X17 / --	27GA 1.75" THICK FLUSH DOOR
3718 / C7X18 / --	27GA 2" THICK RIBBED MODELS
3720 / C7X20 / 240U	20GA 2" THICK FLUSH MODELS
3722 / COX22 / --	

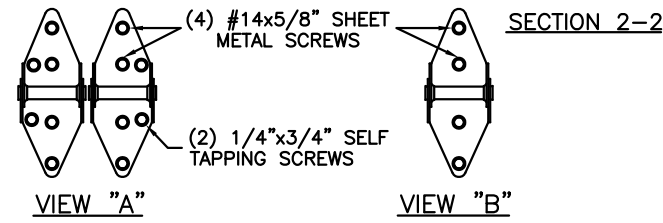
**FULL VISIONS SECTION REINFORCEMENT:**  
 1/8" X 4" X 6" ALUMINUM OFF-SET PLATE BOLTED TO EACH REINFORCING RIB WITH (2) 1/4" HEX BOLTS & FLANGE NUTS AT EACH OFFSET PLATE LOCATION. 2" X 2" X 1/8" ALUMINUM ANGLES BOLTED TO PLATES AS SHOWN WITH 1/4" HEX BOLTS & FLANGE NUTS AT EACH OFFSET PLATE LOCATION. OFFSET PLATES LOCATED AT EACH HINGE & AT CENTER OF EACH PANEL.



THIS DOOR MEETS OR EXCEEDS THE DESIGN LOADS FOR THE WIND SPEEDS LISTED BELOW ACCORDING TO THE INTERNATIONAL BUILDING CODE FOR THE FOLLOWING CONDITIONS: 1) ENCLOSED BUILDING, 2) DOOR HAS 2' OF WIDTH IN BUILDING'S END ZONE, 3) IMPORTANCE FACTOR OF 1.0, 4) ANY ROOF SLOPE, AND 5) 50% SAFETY FACTOR.

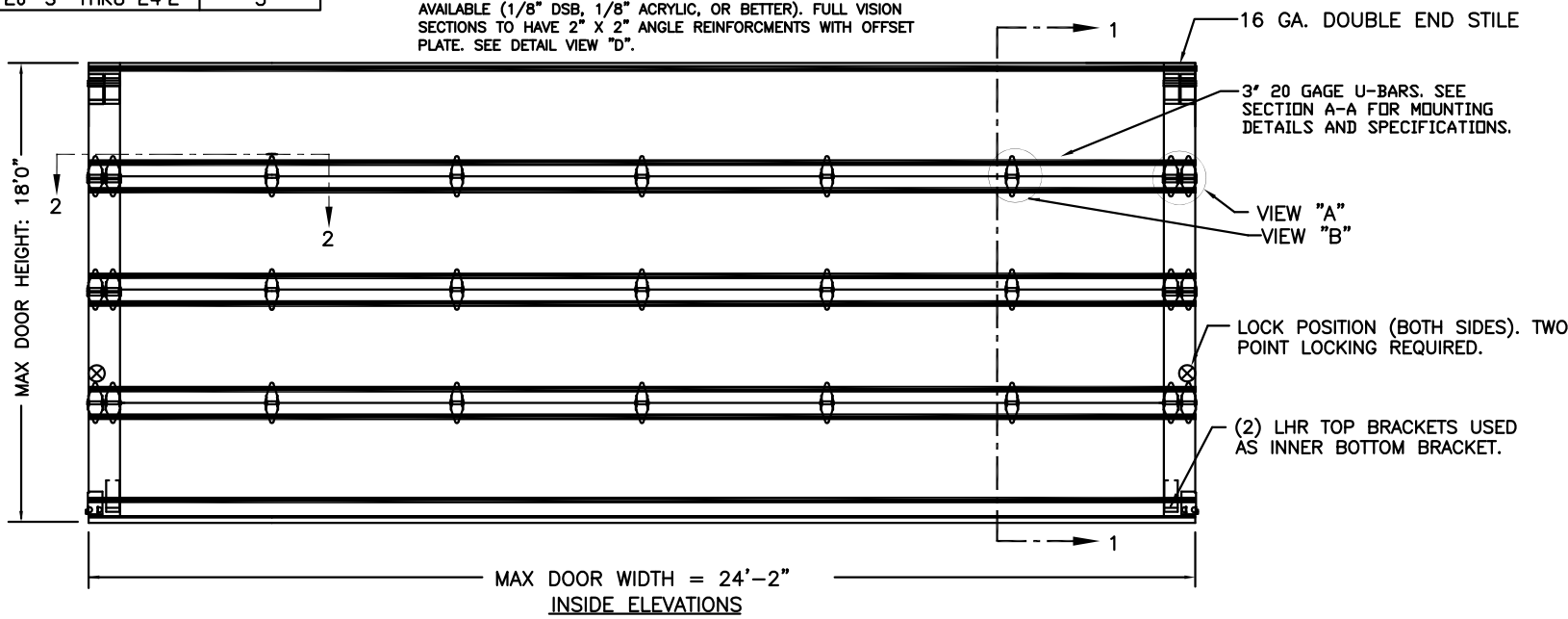
WIND SPEED (MPH)	≤ 90
EXPOSURE LEVEL	B
MEAN ROOF HEIGHT	≤ 30'

THE OPTIONAL GLAZING SHOWN ON THIS DRAWING MEETS THE WIND LOAD REQUIREMENTS OF THE FLORIDA BUILDING CODE OR INTERNATIONAL BUILDING CODE BUT DOES NOT MEET THE IMPACT RESISTANT REQUIREMENT FOR WINDBORNE DEBRIS REGIONS (FBC / IBC CHAPTER 16).

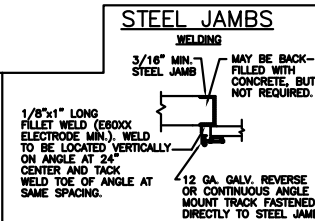
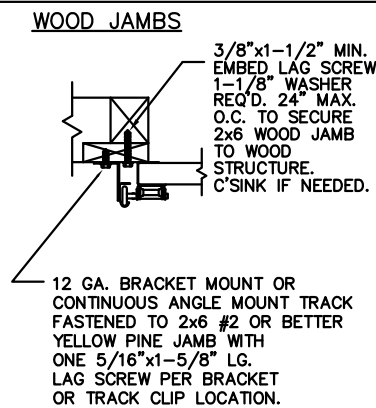
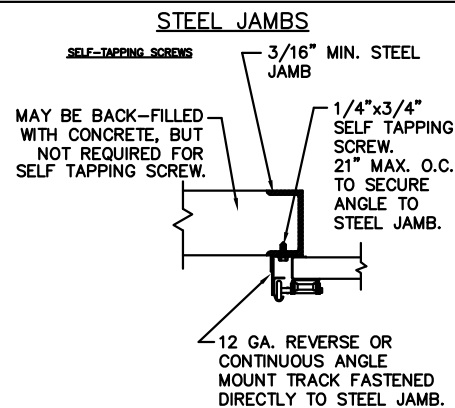
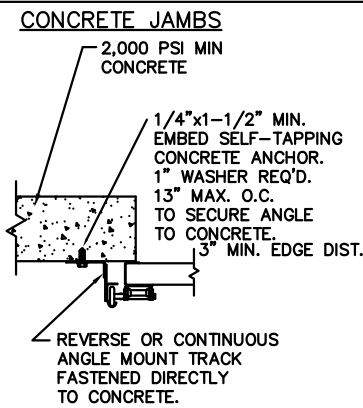
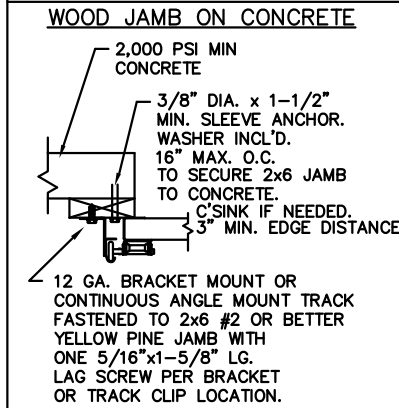


OPTIONAL ALUMINUM FULL VISION WINDOW LITE SECTIONS AVAILABLE (1/8" DSB, 1/8" ACRYLIC, OR BETTER). FULL VISION SECTIONS TO HAVE 2" X 2" ANGLE REINFORCEMENTS WITH OFFSET PLATE. SEE DETAIL VIEW "D".

DOOR HEIGHT 'A'	NUMBER OF SECTIONS
UP TO 8'-0"	4
8'-3" THRU 10'-0"	5
10'-3" THRU 12'-0"	6
12'-3" THRU 14'-0"	7
14'-3" THRU 16'-0"	8
16'-3" THRU 18'-0"	9
DOOR WIDTH	NUMBER OF CTR HINGES PER JOINT
20'-3" THRU 24'-2"	5



**ANCHOR NOTE:** FIRST (BOTTOM) ANCHOR STARTING AT NO MORE THAN HALF OF THE MAXIMUM ON-CENTER DISTANCE. HIGHEST ANCHOR INSTALLED AT LEAST AS HIGH AS THE DOOR OPENING.



CLOPAY CORP. ALL RIGHTS RESERVED.  
 Third Angle Projection

Unless Stated Otherwise TOLERANCES are  
 .0 = ±.031  
 .00 = ±.015  
 .000 = ±.005  
 .0000 = ±.001  
 Degrees = ±1/2'  
 Unless Stated Otherwise DIMENSIONS ARE IN INCHES.

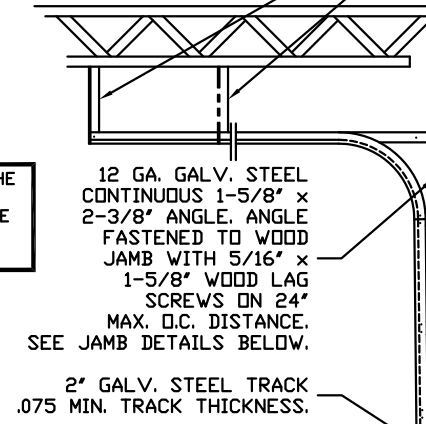
MARK WESTERFIELD, P.E. FLORIDA P.E. #48495, NC P.E. #23832, TEXAS P.E. #91513  
 SECTION 1 - 1  
 DESIGN LOADS: +13.3 & -13.3 P.S.F. TEST LOADS +20.0 & -20.0 P.S.F.  
 MANUFACTURING PRODUCT CODE: MPC: C-PAN-1E448

CLOPAY Building Products Company		8585 Duke Boulevard Mason, OH 45040 USA Tel. No. 513-770-4800 Fax No. 513-770-4853		CLOPAY WINDLOAD RATING W1	
DESCRIPTION: COMMERCIAL PUR DOOR, +/- 14 PSF DESIGN LOAD					
DRAWN BY: SH		DATE: 10/11/10		SCALE: NTS	
CHECKED BY: SH		DATE: 10/11/10		SHEET 1 OF 1	
DWG. NO.: 104368		VER: IBC		DWG. SIZE B	

REVISIONS					
REV. NO.	ZONE	DATE	ECN NO.	APPVD	DESCRIPTION
00	--	10/10	-	-	INITIAL RELEASE.

THE DESIGN OF THE SUPPORTING STRUCTURAL ELEMENTS IS THE RESPONSIBILITY OF THE BUILDING ENGINEER OR ARCHITECT OF RECORD.

HORIZONTAL TRACK END HANGER BRACKET (SUPPLIED BY DOOR INSTALLER) CLOSES ROLLER CHANNEL. INTERMEDIATE HANGER REQ'D FOR DOORS IF HORIZONTAL TRACK DEFLECTION EXCEEDS 1/240TH OF DOOR HEIGHT.  
 NOTE: DOUBLE TRACK LOW HEADROOM, HI-LIFT TRACK, FOLLOW-THE-ROOF TRACK, AND VERTICAL LIFT TRACK ARE AVAILABLE OPTIONS. 3" TRACK ALSO AVAILABLE.



DOOR HEIGHT 'L'	'L'
8'-0"	88"
9'-0"	100"
10'-0"	112"
12'-0"	136"
14'-0"	160"
15'-0"	172"
16'-0"	184"
17'-0"	194"
18'-0"	204"

