

CLOPAY/IDEAL/HOLMES

- 3717/C7X17 - 27GA 1-3/4" THICK RIBBED DOOR
- 3718/C7X18 - 27GA 1-3/4" THICK FLUSH DOOR
- 3720/C7X20/240U - 27GA 2" THICK RIBBED DOOR
- 3722/COX22 - 20GA 2" THICK FLUSH DOOR
- 3724/C7X24/244U - 24GA 2" THICK RIBBED DOOR

12'-2" WIDE (MAX) X 18'-0" HIGH (MAX)

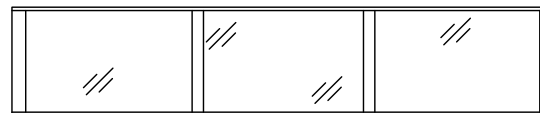
REVISIONS

REV. NO.	ZONE:	DATE:	ECN NO.	APPVD:	DESCRIPTION
01	-	11/2008	-	-	ADDED MPC; REVISED JAMB ATTACHMENT.
02	-	02/2012	-	-	UPDATED WINDCODE CHART

HORIZONTAL TRACK END HANGER BRACKET (SUPPLIED BY DOOR INSTALLER) CLOSES ROLLER CHANNEL. INTERMEDIATE HANGER REQUIRED FOR DOORS 12'-0" AND HIGHER

NOTE: DOUBLE TRACK LOW HEADROOM, HI-LIFT TRACK, FOLLOW-THE-ROOF TRACK, AND VERTICAL LIFT TRACK ARE AVAILABLE OPTIONS.

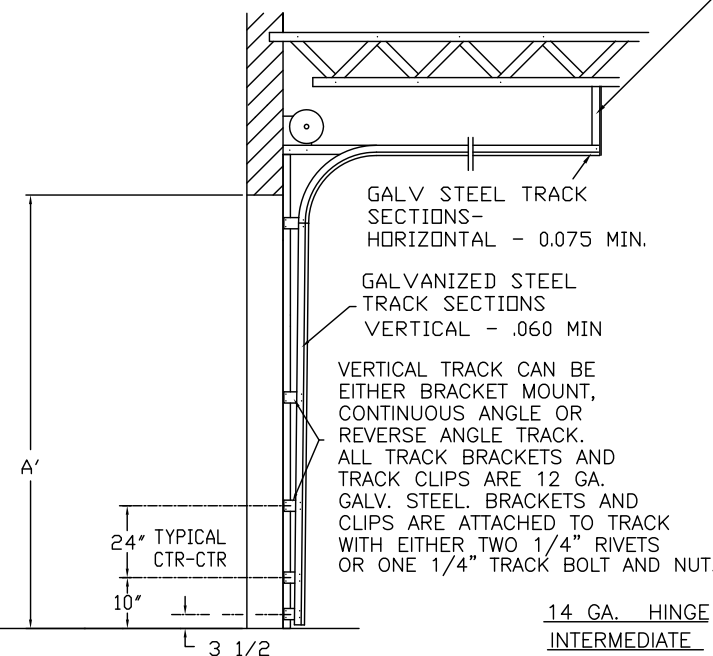
THE OPTIONAL GLAZING SHOWN ON THIS DRAWING MEETS THE WIND LOAD REQUIREMENTS OF THE FLORIDA BUILDING CODE OR INTERNATIONAL BUILDING CODE BUT DOES NOT MEET THE IMPACT RESISTANT REQUIREMENT FOR WINDBORNE DEBRIS REGIONS (REF. CHAPTER 16 FBC/IBC)



OPTIONAL ALUMINUM FULL VISION WINDOW LITE SECTIONS AVAILABLE (1/8" DSB, 1/8" ACRYLIC, 1/4" WIRE, 1/2" INSUL.). FULL VISION SECTIONS TO HAVE SAME REINFORCEMENT AS OTHER SECTIONS. OPTIONAL ACRYLIC IS PLASKOLITE OPTIX, AN APPROVED CC2 PLASTIC IN COMPLIANCE WITH IBC/FBC 2606.

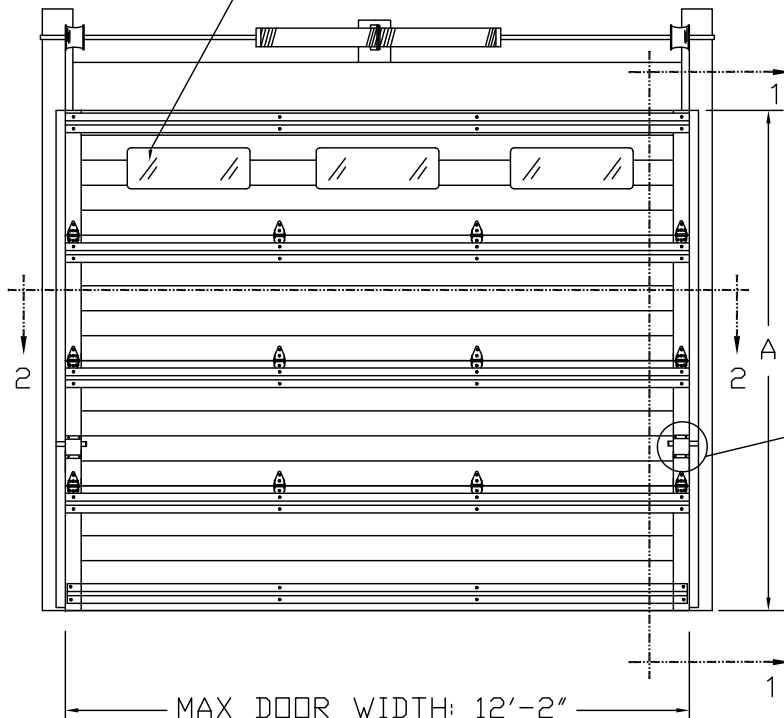
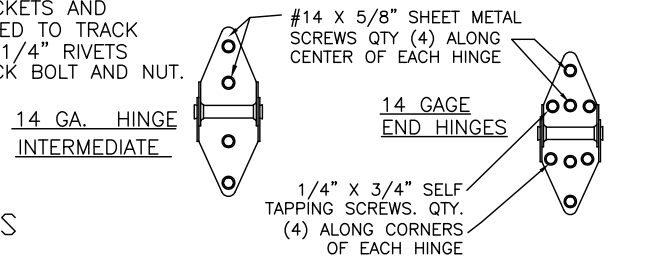
OPTIONAL 24 X 8 DSB OR INSULATED WINDOW LITES AVAILABLE

DOOR HEIGHT 'A'	NUMBER OF SECTIONS
UP TO 8'-0"	4
8'-3" THRU 10'-0"	5
10'-3" THRU 12'-0"	6
12'-3" THRU 14'-0"	7
14'-3" THRU 16'-0"	8
16'-3" THRU 18'-0"	9



SIDE ELEVATION STANDARD-LIFT TRACK DETAILS

HINGE DETAIL



MAX DOOR WIDTH: 12'-2"

SECTIONS ARE 1-3/4" THICK (MIN.) PANELS. EXTERIOR 27 GA. MIN. GALV. STEEL INTERIOR 27 GA. MIN. GALV. STEEL. THE STUCCO EMBOSSED STEEL TEXTURE IS PREPAINTED WITH A BAKED POLYESTER PAINT. OPTIONAL MINOR RIBS ARE PLACED EVERY 4 INCHES ALONG THE WIDTH OF THE EXTERIOR PANELS.

URETHANE CORE DENSITY 2.4 P.C.F.

TWO POINT LOCKING

12 GA. GALV. STEEL TOP ROLLER BRACKET. EACH BRACKET ATTACHED W/ (4) #14x5/8" SHEET METAL SCREWS. ADJUSTABLE SLIDE ATTACHED TO TOP BRACKET WITH (2) 1/4"x1/2" BOLTS AND NUTS PER BRACKET.

(1) 2 1/4" TALL x 20 GA. GALV. STEEL U-BAR ON THE TOP OF EVERY SECTION AND ON AT THE BOTTOM OF THE BOTTOM SECTION. EACH U-BAR TO BE ATTACHED WITH TWO 1/4"x3/4" SELF TAPPING SCREWS PER HINGE LOCATION.

INTERMEDIATE ROLLER HINGES. SEE HINGE DETAIL FOR SPECIFICATIONS.

THIS DOOR MEETS OR EXCEEDS THE DESIGN LOADS FOR THE ULTIMATE WIND SPEEDS LISTED BELOW ACCORDING TO THE FLORIDA BUILDING CODE OR THE INTERNATIONAL BUILDING CODE (BASED ON ASCE-10) FOR THE FOLLOWING CONDITIONS: 1) ENCLOSED BUILDING, 2) DOOR HAS 2' OF WIDTH IN BUILDING'S END ZONE, 3) ANY ROOF SLOPE, AND 4) TESTING IN ACCORDANCE WITH ANSI/DASMA 108. SITE-SPECIFIC CALCULATIONS BY A QUALIFIED DESIGN PROFESSIONAL MAY DIFFER.

ULTIMATE WIND SPEED (MPH)	130	135	140	150	165
EXPOSURE CATEGORY	B, C, D	B, C, D	B, C	B, C	B
MEAN ROOF HEIGHT	25'	15'	25'	15'	30'

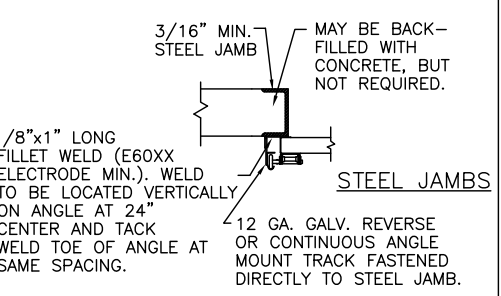
12 GA. BOTTOM BRACKET FASTENED WITH QTY. (4) 1/4" X3/4" SELF TAPPING SCREWS.

BOTTOM SECTION USES ALUM. EXTRUDED RETAINER FOR FLEXIBLE VINYL ASTRAGAL

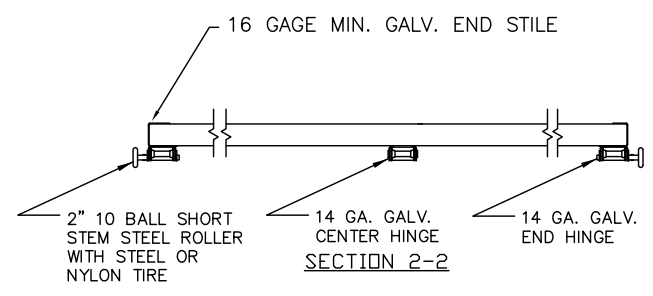
SECTION 1 - 1 DESIGN LOADS: +25.0 & -28.0 PSF TEST LOADS +37.5 & -37.5 PSF

DESIGN ENGINEER: MARK WESTERFIELD, P.E. FLORIDA P.E. #48495, NC P.E. #23832, TEXAS P.E. #91513

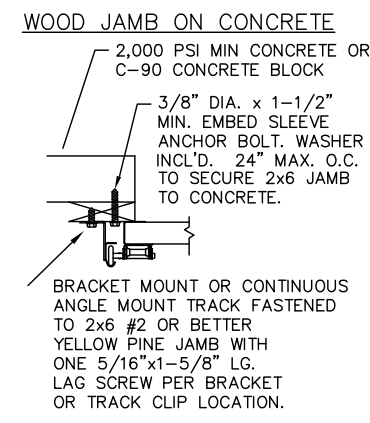
MPC: C-DSIU-1D477



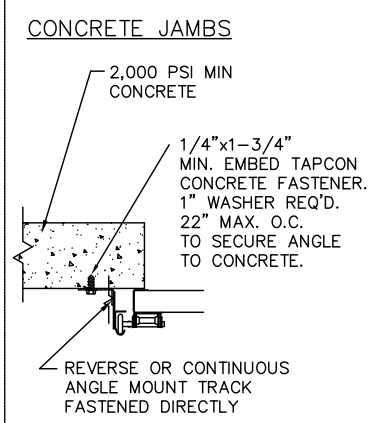
STEEL JAMBS



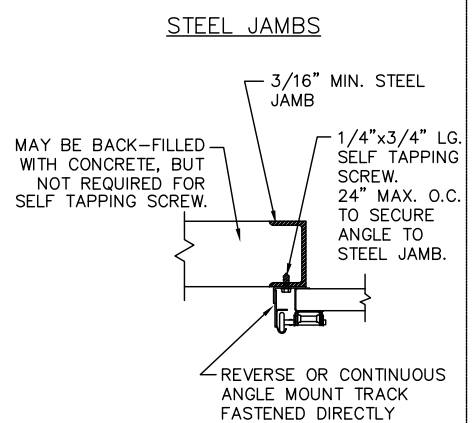
SECTION 2-2



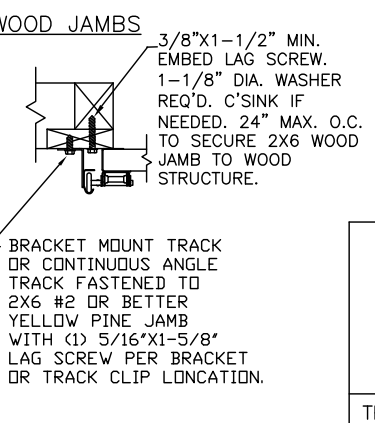
WOOD JAMB ON CONCRETE



CONCRETE JAMBS



STEEL JAMBS



WOOD JAMBS

THE DESIGN OF THE SUPPORTING STRUCTURAL ELEMENTS IS THE RESPONSIBILITY OF THE BUILDING ENGINEER OR

CLOPAY CORP. ALL RIGHTS RESERVED.

Third Angle Projection

Unless Stated Otherwise TOLERANCES are  
 .0 = ±.031  
 .00 = ±.015  
 .000 = ±.005  
 .0000 = ±.001  
 Degrees = ±1/2'

Unless Stated Otherwise DIMENSIONS ARE IN INCHES.

**Glopay**  
 Building Products Company

8585 Duke Boulevard  
 Mason, OH 45040 USA  
 Tel. No. 513-770-4800  
 Fax No. 513-770-4853

WINDLOAD RATING  
 W4

DESCRIPTION: MODEL 37XX URETHANE INSULATED DOOR

DRAWN BY: BFA

DATE: 11/26/07

SCALE: N/A

DWG. SIZE B

CHECKED BY: S.HAMILTON

DATE: 11/26/07

SHEET 1 OF 1

DWG. NO.: 104640

VER: IBC