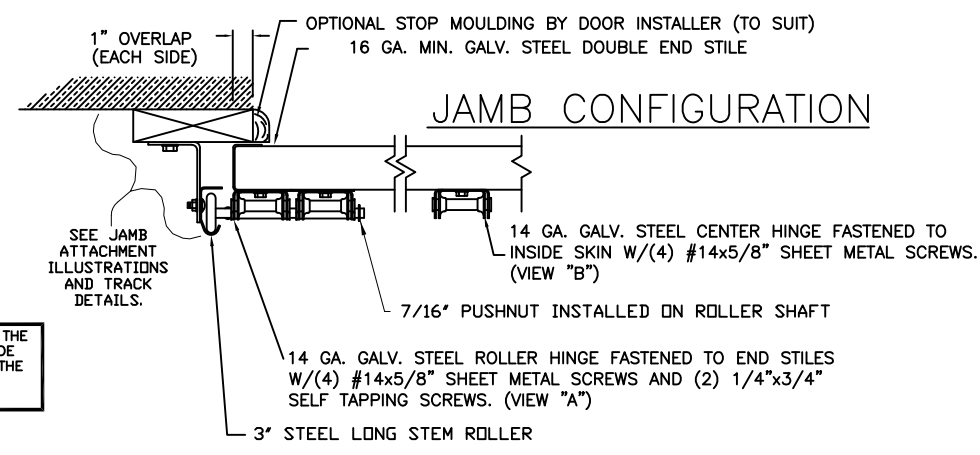
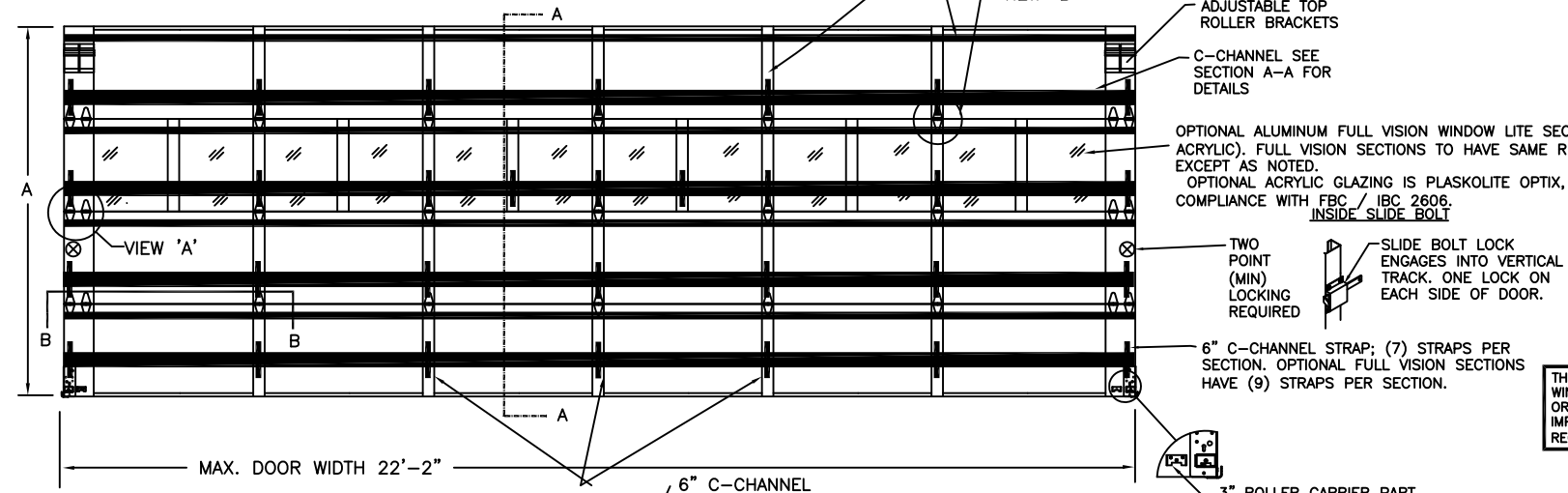


CLOPAY / IDEAL / HOLMES	INTELLICORE DOORS UP TO 22' 2" W x 18' 0" H MAXIMUM
3717 / C7X17 / --	/ 27GA 1.75" THICK MINOR RIB
3718 / C7X18 / --	/ 27GA 1.75" THICK FLUSH
3720 / C7X20 / 240U	/ 27GA 2" THICK MINOR RIB
3722 / COX22 / --	/ 20GA 2" THICK FLUSH
3724 / C7X24 / 244U	/ 24GA 2" THICK MINOR RIB

REVISIONS					
REV. NO.	ZONE	DATE	ECN NO.	APPVD:	DESCRIPTION
00	-	01/28/13	ER1290	SH	INITIAL RELEASE.

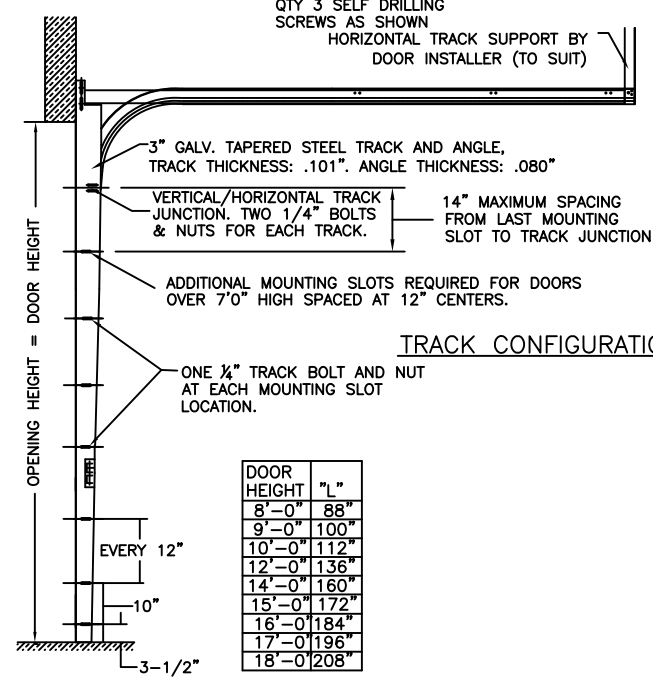


THE OPTIONAL GLAZING SHOWN ON THIS DRAWING MEETS THE WIND LOAD REQUIREMENTS OF THE FLORIDA BUILDING CODE OR INTERNATIONAL BUILDING CODE BUT DOES NOT MEET THE IMPACT RESISTANT REQUIREMENT FOR WINDBORNE DEBRIS REGIONS (FBC / IBC CHAPTER 16).

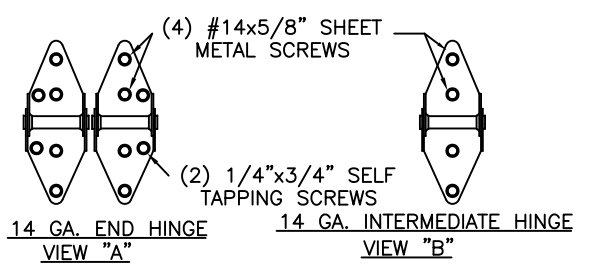
SECTION B-B

DOOR HEIGHT 'A'	NUMBER OF SECTIONS
UP TO 8'-0"	4
8'-3" THRU 10'-0"	5
10'-3" THRU 12'-0"	6
12'-3" THRU 14'-0"	7
14'-3" THRU 16'-0"	8
16'-3" THRU 18'-0"	9

VIEW "E"
ATTACH THE 6" x 2-1/4" x 12 GA. STEEL REINFORCING PLATE TO THE UNDERSIDE OF THE C-CHANNEL WITH (4) 1/4"x3/4" SELF TAPPING SCREWS AT THESE LOCATIONS.



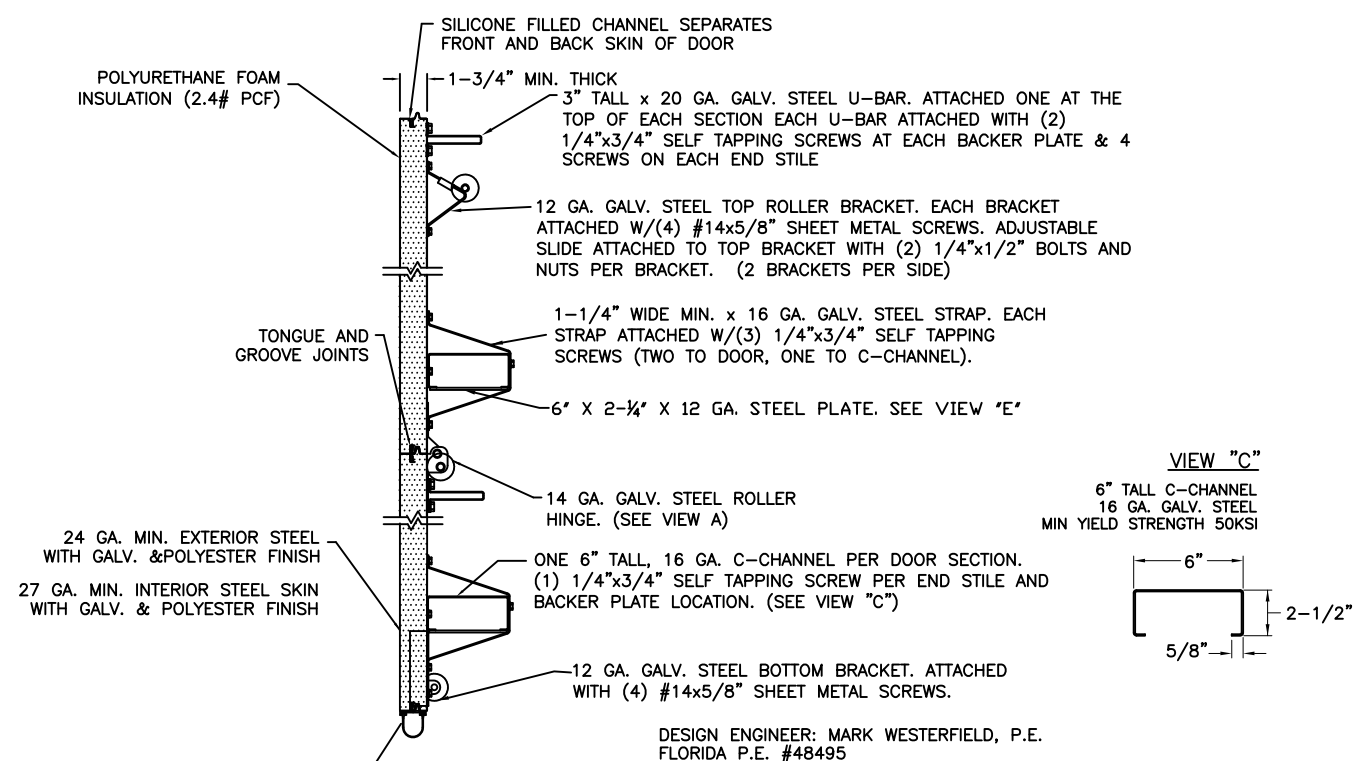
DOOR HEIGHT	"L"
8'-0"	88"
9'-0"	100"
10'-0"	112"
12'-0"	136"
14'-0"	160"
15'-0"	172"
16'-0"	184"
17'-0"	196"
18'-0"	208"



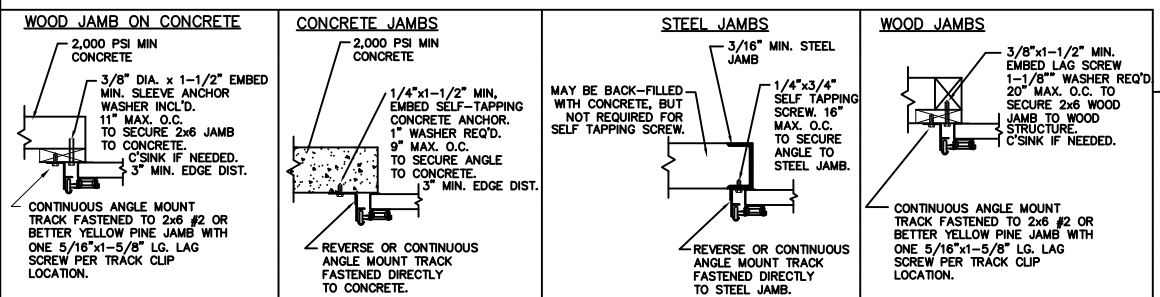
THIS DOOR MEETS OR EXCEEDS THE DESIGN LOADS FOR THE WIND SPEEDS LISTED BELOW ACCORDING TO THE FLORIDA BLDG. CODE OR IBC (ASCE7) FOR THE FOLLOWING CONDITIONS: 1) ENCLOSED BUILDING, 2) DOOR HAS 2' OF WIDTH IN BUILDING'S END ZONE, 3) IMPORTANCE FACTOR OF 1.0, 4) ROOF SLOPE LESS THAN 10°, AND 5) 50% SAFETY FACTOR. IF THESE (5) CONDITIONS ARE NOT MET, A LICENSED ENGINEER SHOULD BE EMPLOYED TO DETERMINE IF THIS PRODUCT MEETS THE REQUIRED WIND SPEED.

WIND SPEED (MPH)	≤ 110	120	120	130
EXPOSURE LEVEL	B or C	B	C	B
MEAN ROOF HEIGHT	30'	30'	20'	30'

NOTE: THE DESIGN OF THE SUPPORTING STRUCTURAL ELEMENTS ARE THE RESPONSIBILITY OF THE PROFESSIONAL OF RECORD FOR THE BUILDING OR STRUCTURE AND IN ACCORDANCE WITH CURRENT BUILDING CODES FOR THE LOADS LISTED ON THIS DRAWING.



ANCHOR NOTE: FIRST (BOTTOM) ANCHOR STARTING AT NO MORE THAN HALF OF THE MAXIMUM ON-CENTER DISTANCE. HIGHEST ANCHOR INSTALLED AT LEAST AS HIGH AS THE DOOR OPENING.



CLOPAY CORP. ALL RIGHTS RESERVED.



Unless Stated Otherwise TOLERANCES are
 .0 = ±.031
 .00 = ±.015
 .000 = ±.005
 .0000 = ±.001
 Degrees = ±1/2°
 Unless Stated Otherwise DIMENSIONS ARE IN INCHES.

DESIGN ENGINEER: MARK WESTERFIELD, P.E.
 FLORIDA P.E. #48495
 DESIGN LOADS: +30.0, -30.0 PSF
 TEST LOADS: +45.0, -45.0 PSF

MANUFACTURING PRODUCT CODE: MPC: C-DSIU-1D447

CLOPAY WINDLOAD RATING W5

DESCRIPTION: 1-3/4" INTELLICORE WINDLOAD 22'-2"

DRAWN BY: RJK	DATE: 1/28/13	SCALE: NONE	DWG. B
CHECKED BY: -	DATE: -	SHEET 1 OF 1	SIZE B
DWG. NO.: 104644	VER: IBC		