

4

3

2

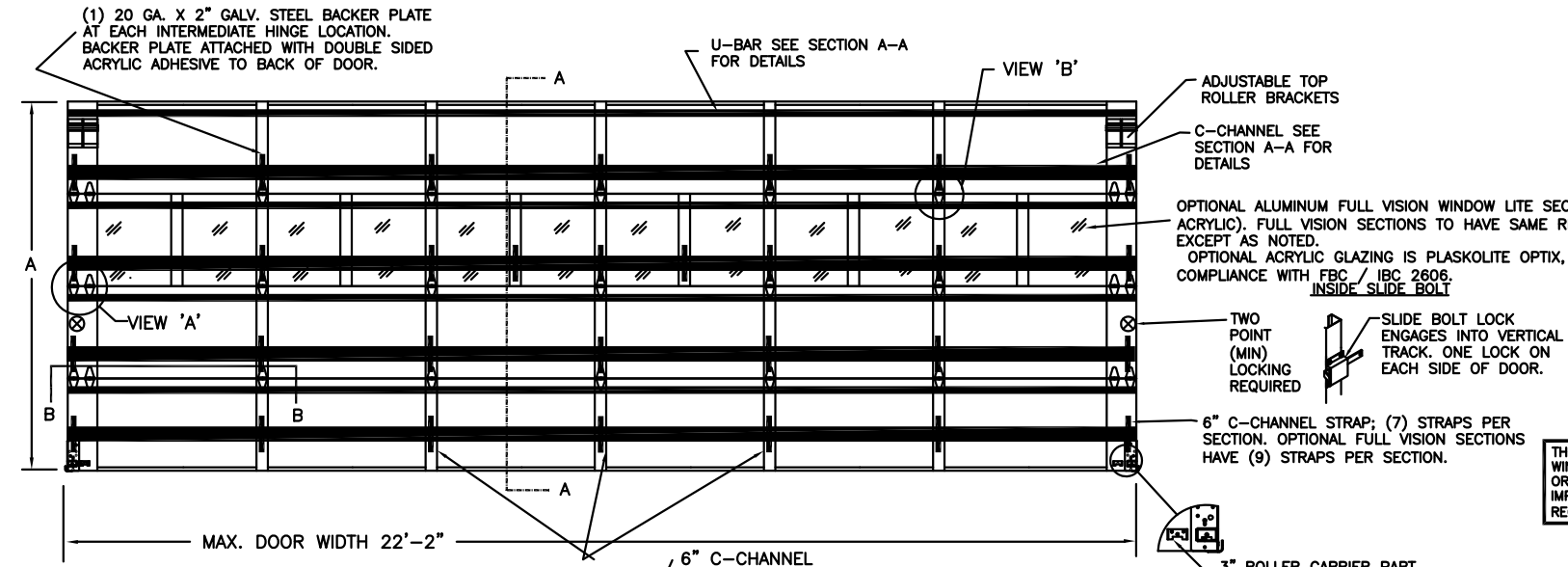
1

MODEL 37XX UP TO 22'2"W x 18'0"H MAXIMUM

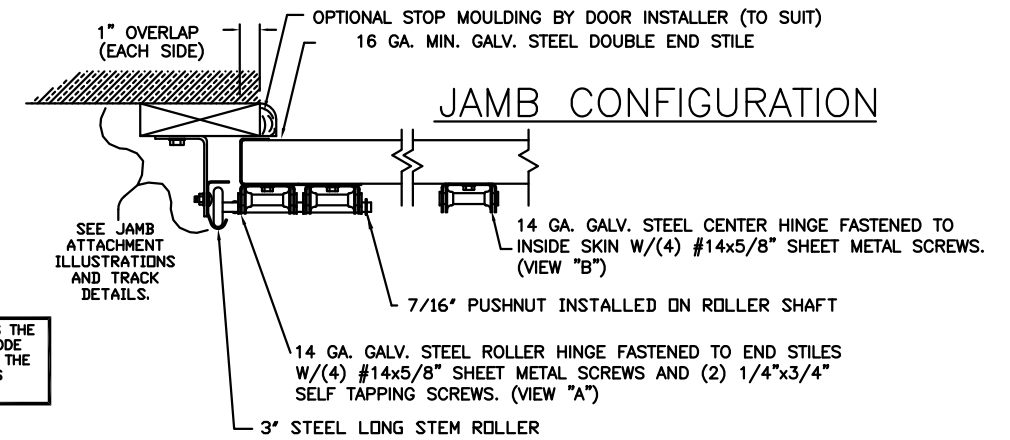
CLOPAY: 3717W5, 3718W5, 3720W5, 3722W5
HOLMES: 240UW5
IDEAL: C7X17W5, C7X18W5, C7X20W5, COX22W5

REVISIONS

REV. NO.	ZONE	DATE	ECN NO.	APPVD:	DESCRIPTION
00	-	01/31/12	-	-	RELEASE



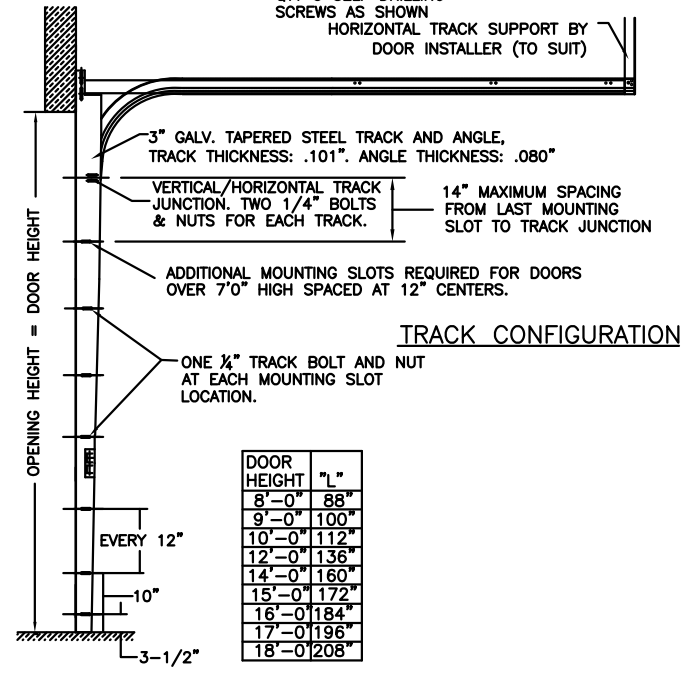
THE OPTIONAL GLAZING SHOWN ON THIS DRAWING MEETS THE WIND LOAD REQUIREMENTS OF THE FLORIDA BUILDING CODE OR INTERNATIONAL BUILDING CODE BUT DOES NOT MEET THE IMPACT RESISTANT REQUIREMENT FOR WINDBORNE DEBRIS REGIONS (FBC / IBC CHAPTER 16).



SECTION B-B

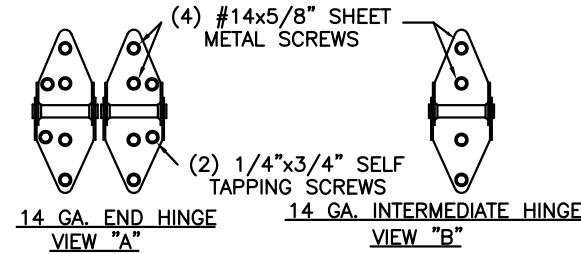
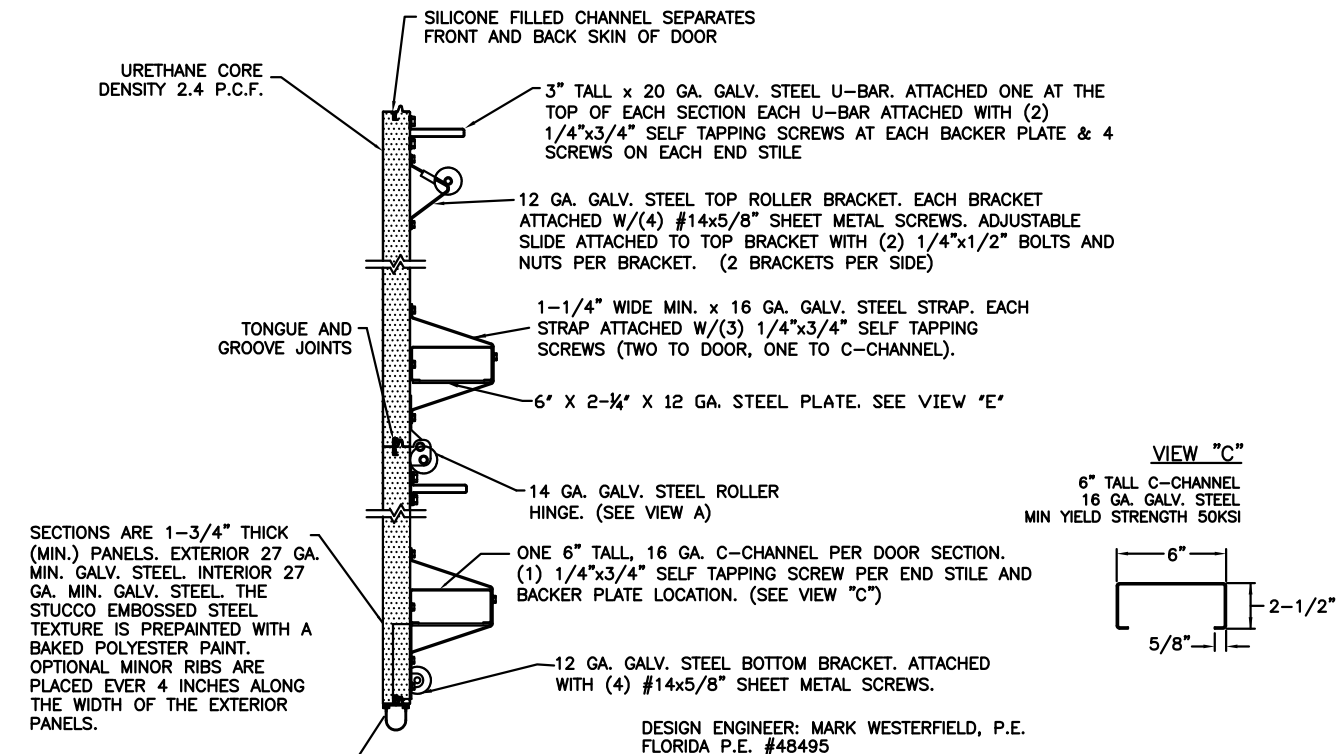
DOOR HEIGHT 'A'	NUMBER OF SECTIONS
UP TO 8'-0"	4
8'-3" THRU 10'-0"	5
10'-3" THRU 12'-0"	6
12'-3" THRU 14'-0"	7
14'-3" THRU 16'-0"	8
16'-3" THRU 18'-0"	9

VIEW "E"
ATTACH THE 6" x 2-1/4" x 12 GA. STEEL REINFORCING PLATE TO THE UNDERSIDE OF THE C-CHANNEL WITH (4) 1/4"x3/4" SELF TAPPING SCREWS AT THESE LOCATIONS.

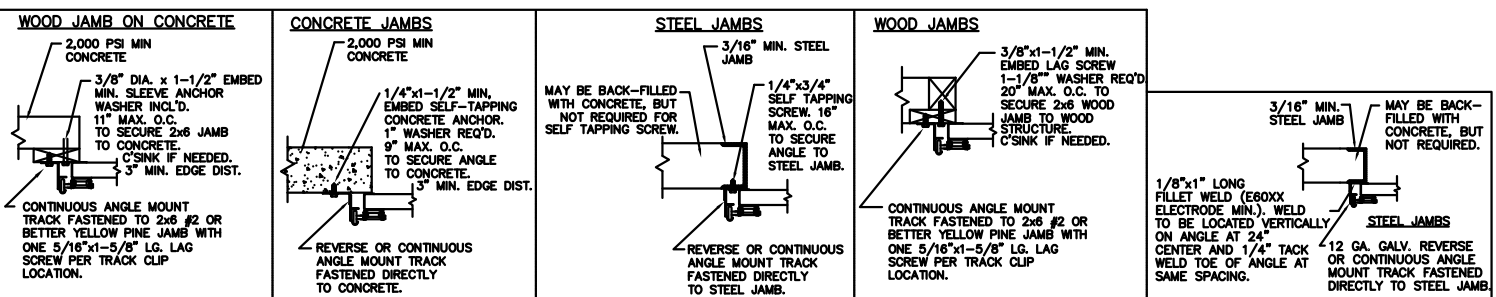


DOOR HEIGHT	"L"
8'-0"	88"
9'-0"	100"
10'-0"	112"
12'-0"	136"
14'-0"	160"
15'-0"	172"
16'-0"	184"
17'-0"	196"
18'-0"	208"

NOTE: THE DESIGN OF THE SUPPORTING STRUCTURAL ELEMENTS ARE THE RESPONSIBILITY OF THE PROFESSIONAL OF RECORD FOR THE BUILDING OR STRUCTURE AND IN ACCORDANCE WITH CURRENT BUILDING CODES FOR THE LOADS LISTED ON THIS DRAWING.



ANCHOR NOTE: FIRST (BOTTOM) ANCHOR STARTING AT NO MORE THAN HALF OF THE MAXIMUM ON-CENTER DISTANCE. HIGHEST ANCHOR INSTALLED AT LEAST AS HIGH AS THE DOOR OPENING.



CLOPAY CORP. ALL RIGHTS RESERVED.



Unless Stated Otherwise TOLERANCES are
.0 = ±.031
.00 = ±.015
.000 = ±.005
.0000 = ±.001
Degrees = ±1/2"
Unless Stated Otherwise DIMENSIONS ARE IN INCHES.

Clopay Building Products Company
8585 Duke Boulevard
Mason, OH 45040 USA
Tel. No. 513-770-4800
Fax No. 513-770-4853

MANUFACTURING PRODUCT CODE: MPC: C-DSIU-1D447
CLOPAY WINDLOAD RATING W5

DESCRIPTION: MODEL 37XX URETHANE INSULATED DOOR
DRAWN BY: NTH DATE: 01/31/12 SCALE: NONE DWG. B
CHECKED BY: - DATE: - SHEET 1 OF 1 SIZE B
DWG. NO.: 104644 VER: IBC

4

3

2

1