

4

3

2

1

HEADROOM, HI-LIFT TRACK, FOLLOW-THE-ROOF TRACK, AND VERTICAL LIFT TRACK ARE AVAILABLE OPTIONS. 3" TRACK ALSO AVAILABLE.

9'-2" WIDE (MAX) X 18'-0" HIGH (MAX)

REVISIONS

REV. NO.	ZONE:	DATE:	ECN NO.	APPVD:	DESCRIPTION
00	-	11/12/13	EN2052	--	RELEASED

HORIZONTAL TRACK END HANGER BRACKET (SUPPLIED BY DOOR INSTALLER) CLOSES ROLLER CHANNEL. INTERMEDIATE HANGER REQUIRED FOR DOORS IF HORIZONTAL TRACK DEFLECTION EXCEEDS 1/240TH OF THE DOOR HEIGHT

SECTIONS ARE 1-7/8" THK PANELS ROLL FORMED OF .022" MIN. HOT DIPPED GALVANIZING, ROLL FORMED STEEL.

D

D

24GA EXTERIOR SKIN

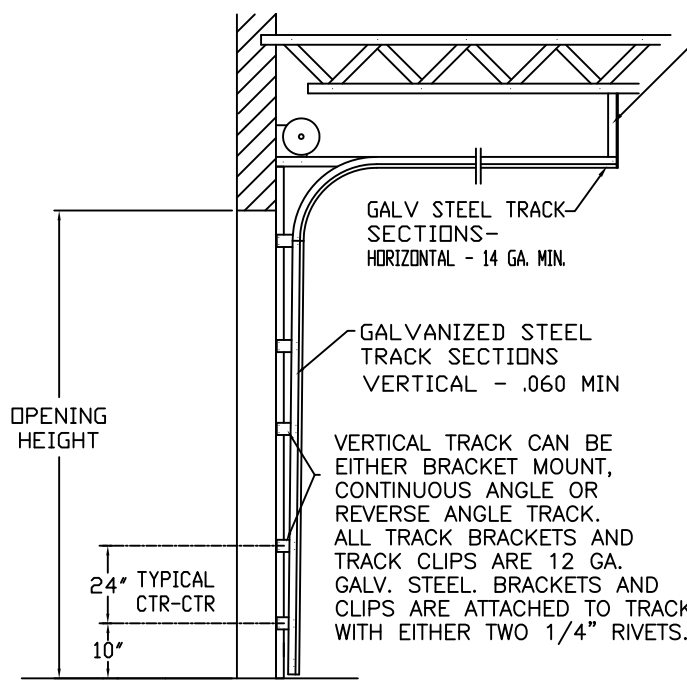
20GA EXTERIOR SKIN (FLUSH DOORS)

20GA EXTERIOR SKIN (RIBBED DOORS)

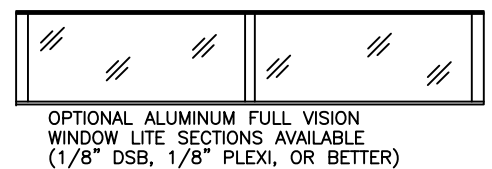
NON-INSULATED MODELS:
 MODELS: CLOPAY - 524W1, 224W1
 IDEAL - C4STW1
 VINYL BACKED INSULATION MODELS:
 MODELS: CLOPAY - 524VW1
 IDEAL - C4SVW1
 STEEL BACKED INSULATED MODELS:
 MODELS: CLOPAY - 524SW1, 224SW1
 IDEAL - C4SSW1

NON-INSULATED MODELS:
 MODELS: IDEAL - C1STW1
 STEEL BACKED INSULATED MODELS:
 MODELS: IDEAL - C1SSW1

NON-INSULATED MODELS:
 MODELS: CLOPAY - 520W1
 IDEAL - C0STW1
 STEEL BACKED INSULATION MODELS:
 MODELS: CLOPAY - 520SW1
 IDEAL - C0SSW1

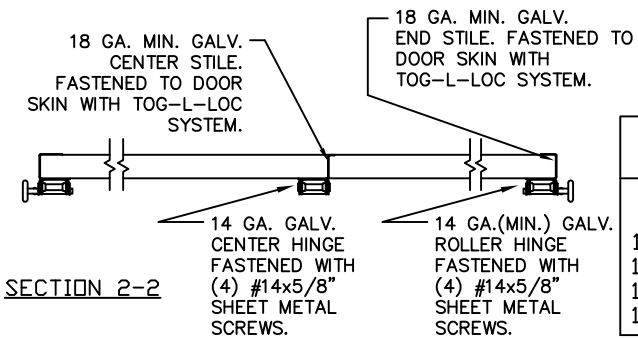


DOOR WIDTH	NUMBER OF CENTER STILES
UP TO 9'-2"	1

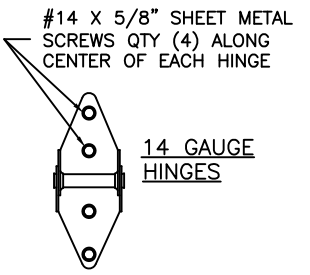


OPTIONAL INSULATION (SEE MODEL EXPLANATION)

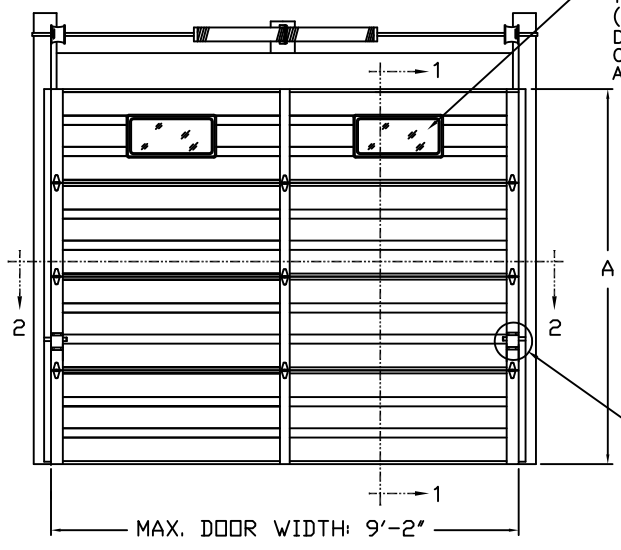
SIDE ELEVATION STANDARD-LIFT TRACK DETAILS



DOOR HEIGHT 'A'	NUMBER OF SECTIONS
8'-0"	4
8'-3" THRU 10'-0"	5
10'-3" THRU 12'-0"	6
12'-3" THRU 14'-0"	7
14'-3" THRU 16'-0"	8
16'-3" THRU 18'-0"	9



NO STRUTS.



OPTIONAL POLYPROPYLENE SCREW TOGETHER FRAME (MAX 24" x 12") TYPE DSB OR 1/8" PLEXI OR BETTER WINDOW LITES AVAILABLE.

BOTTOM SECTION REINFORCED WITH TEMPERED ALUMINUM EXTRUSION WITH INTEGRAL RETAINER FOR FLEXIBLE VINYL ASTRAGAL

ADJUSTABLE TOP ROLLER BRACKET OF 12 GA. GALV. STEEL, INSTALLED ON DOOR WITH (4) #14 X 5/8" LG SHEET METAL SCREWS

END ROLLER HINGES OF 14 GA. GALV. STEEL, FASTENED WITH (4) #14 X 5/8" LG. SHT. MTL. SCREWS

2" ROLLERS FEATURE (10) 1/4" DIA. STEEL BALL BEARINGS FULL FLOATING IN CASE HARDENED STEEL RACES

BOTTOM ROLLER BRACKET OF 13 GA. GALV. STEEL, FASTENED WITH (4) #14 X 5/8" LG SHT. MTL. SCREWS

20 GAUGE:
 DESIGN LOAD: +16.5 PSF, -16.5 PSF.
 TEST LOAD: +25 PSF, -25 PSF.

24 GAUGE:
 DESIGN LOAD: +13.5 PSF, -13.5 PSF.
 TEST LOAD: +20 PSF, -20 PSF.

VERTICAL TRACK ATTACHMENT METHODS

VERTICAL 2" X 6" WOOD JAMB ON WOOD FRAME CONST.

VERTICAL 2" X 6" JAMB ON MASONRY CONST.

VERTICAL JAMB STEEL FRAME CONST.

OPTION 1 1-1/2" EMBED 3/8" X 3" LAG SCREWS ON 24" CENTERS. 1" O.D. MIN. WASHER REQUIRED. LAG SCREW MAY BE COUNTERSUNK 1/4" TO PROVIDE A FLUSH MOUNT IF REQUIRED.

OPTION 1. 2000 PSI CONCRETE 1/2" X 3" SELF TAPPING CONCRETE ANCHORS EMBED 1-1/2" INTO MASONRY AND 24" ON CENTER SPACING. FIRST (BOTTOM) ANCHOR 6" FROM FLOOR.

5/16" X 3/4" SELF TAPPING SCREWS MOUNT TRACK DIRECTLY TO 12 GAGE MIN. STEEL JAMBS. SPACING 24" ON CENTER. FIRST (BOTTOM) SCREW NO MORE THAN 6" FROM FLOOR.

3/8" X 3" SLEEVE ANCHOR 1-1/2" EMBED 24" ON CENTER SPACING. MINIMUM EDGE DISTANCE 3"

OPTION 2. 16D X 3-1/2" COMMON WIRE NAILS ON 13" CENTERS. SPACE FIRST NAIL (BOTTOM) NOT LESS THAN 6" FROM END.

OPTION 2. GROUT FILLED CMU BLOCK 1/4" X 3" SELF TAPPING CONCRETE 1-1/2" EMBED ANCHORS 24" ON CENTER SPACING

THE DESIGN OF THE SUPPORTING STRUCTURAL ELEMENTS IS THE RESPONSIBILITY OF THE BUILDING ENGINEER OR ARCHITECT OF RECORD.

MARK WESTERFIELD, P.E.
 FLORIDA P.E. #48495, NC P.E. #23832,
 TEXAS P.E. #91513

NOTICE: Confidential/Proprietary information of CLOPAY BUILDING PRODUCTS CO. is contained herein and may not be disclosed, used, duplicated, made available, or distributed without its prior consent. Failure to observe this notice may result in liability for any damages and losses resulting therefrom.

Unless Stated Otherwise TOLERANCES are
 .0 = ±.031
 .00 = ±.015
 .000 = ±.005
 .0000 = ±.001
 Degrees = ±1/2"

Third Angle Projection

Unless Stated Otherwise DIMENSIONS ARE IN INCHES.

SECTION 1-1

PART NO.: N/A



8585 Duke Boulevard
 Mason, OH 45040 USA
 Tel. No. 513-770-4800
 Fax No. 513-770-4853

CLOPAY WINDLOAD RATING
 W1

DESCRIPTION: 524W1, 9'2" WIDE

DRAWN BY: SH

DATE: 10/21/13

SCALE: N/A

DWG. B

CHECKED BY: SH

DATE: 10/22/13

SHEET 1 OF 1

DWG. NO.: 104853

REV. NO. 00

4

3

2

1

A

A