

CLOPAY MODEL 3200 (24 GA MIN EXT SKIN)
 CLOPAY MODEL 3220 (20 GA MIN EXT SKIN)
 HOLMES MODEL 240/240G (24 GA MIN EXT SKIN)
 MAX 16'-2" WIDE X 18'-0" HIGH

THE OPTIONAL GLAZING SHOWN ON THIS DRAWING MEETS THE WIND LOAD REQUIREMENTS OF THE FLORIDA BUILDING CODE OR INTERNATIONAL BUILDING CODE BUT DOES NOT MEET THE IMPACT RESISTANT REQUIREMENT FOR WINDBORNE DEBRIS REGIONS (REF. CHAPTER 16 FBC/IBC)

REV	DATE	DESCRIPTION
1	5/95	ADD MODEL 3202 AND 3203
2	8/95	CONCRETE MASONRY OPTIONS
3	4/96	ADDED MODEL 3220, WELDING/JAMB OPTION
4	9/97	MOVED 12'2"W DOORS TO DWG #101687
05	3/2000	ADDED FULL VISION NOTE; REVISE JAMB NOTE
06	3/2000	ADD TRACK OPTIONS NOTE
07	8/24/00	ADD PUSHNUTS; OLD DESIGN LOADS +/-30 PSF
8	10/2003	UPDATED TRACK AND JAMB ATTACHMENT INFO
9	05/2005	UPDATED CODE REF., SPECIFIED OPT. ACRYLIC.
10	08/2005	ADDED M/N 240 (WAS ON D/N 102079)
11	10/2005	ADDED ROLLER OPTION
12	11/2008	UPDATED JAMB ATTACH.; ADDED MPC, 240G.
13	02/2012	UPDATED WINDCODE CHART

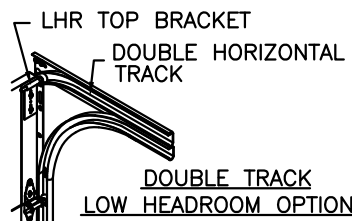
NOTE: THE DESIGN OF THE SUPPORTING STRUCTURAL ELEMENTS ARE THE RESPONSIBILITY OF THE PROFESSIONAL OF RECORD FOR THE BUILDING OR STRUCTURE AND IN ACCORDANCE WITH CURRENT BUILDING CODES FOR THE LOADS LISTED ON THIS DRAWING.



OPTIONAL ALUMINUM FULL VISION WINDOW LITE SECTIONS AVAILABLE (1/8" DSB, 1/8" ACRYLIC, 1/4" WIRE, 1/2" INSUL.). FULL VISION SECTIONS TO HAVE SAME REINFORCEMENT AS OTHER SECTIONS. OPTIONAL ACRYLIC IS PLASKOLITE OPTIX, AN APPROVED CC2 PLASTIC IN COMPLIANCE WITH IBC/FBC 2606.

STEEL SKINS ARE ROLL FORMED OF .016" MIN. (INTERIOR) AND .022" MIN. (EXTERIOR) COMMERCIAL QUALITY STEEL, STUCCO EMBOSSED, G-40 MIN. GALVANIZING.

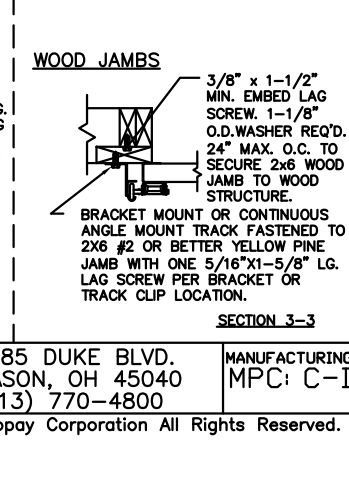
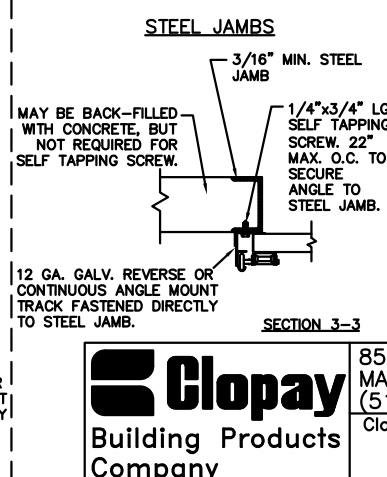
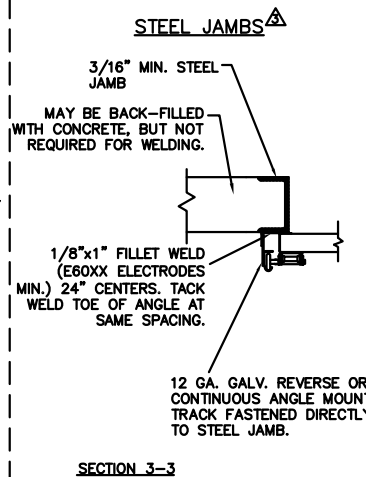
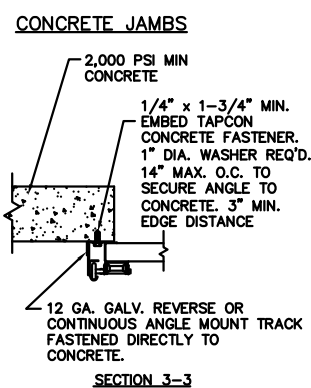
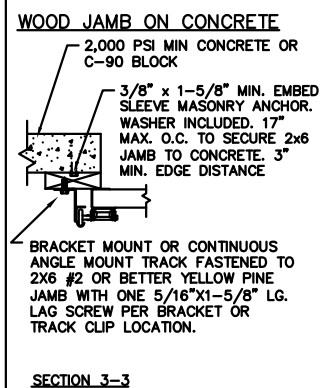
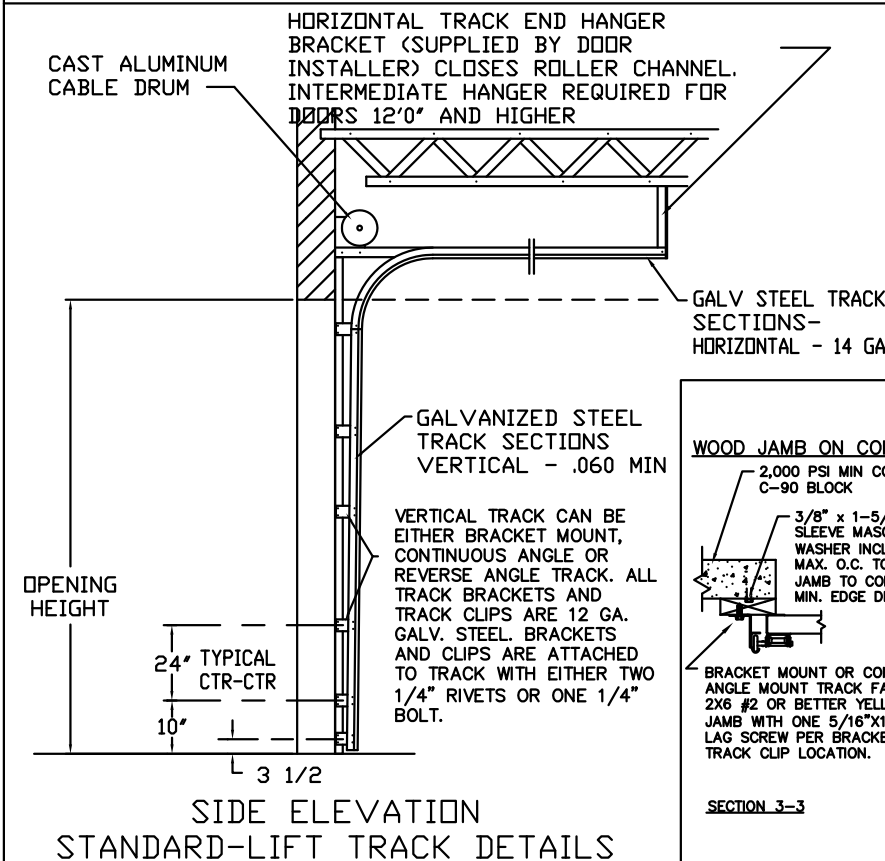
SECTIONS ARE 2" THICK SANDWICH CONSTRUCTION CONSISTING OF EXTERIOR & INTERIOR STEEL SKINS PRESSURE BONDED TO AN EXPANDED POLYSTYRENE CORE.



NOTE: DOUBLE TRACK LOW HEADROOM, HI-LIFT TRACK, FOLLOW-THE-ROOF TRACK, AND VERTICAL LIFT TRACK ARE AVAILABLE OPTIONS. 3" TRACK ALSO AVAILABLE.

DESIGN ENGINEER: MARK W. WESTERFIELD, P.E.
 FLORIDA P.E. #48495, NC P.E. #23832, TEXAS P.E. #91513

ORIGINAL DRAWINGS ARE SIGNED IN BLUE INK WITH A RAISED SEAL (EMBOSS).



THIS DOOR MEETS OR EXCEEDS THE DESIGN LOADS FOR THE ULTIMATE WIND SPEEDS LISTED BELOW ACCORDING TO THE FLORIDA BUILDING CODE OR THE INTERNATIONAL BUILDING CODE (BASED ON ASCE7-10) FOR THE FOLLOWING CONDITIONS: 1) ENCLOSED BUILDING, 2) DOOR HAS 2' OF WIDTH IN BUILDING'S END ZONE, 3) ANY ROOF SLOPE, AND 4) TESTING IN ACCORDANCE WITH ANSI/DASMA 108. SITE-SPECIFIC CALCULATIONS BY A QUALIFIED DESIGN PROFESSIONAL MAY DIFFER.

ULTIMATE WIND SPEED (MPH)	140	145	155	160	175
EXPOSURE CATEGORY	B, C, D	B, C, D	B, C	B, C	B
MEAN ROOF HEIGHT	25'	15'	25'	15'	30'

DESIGN LOADS: +30.0 PSF, -32.0 PSF
 TEST LOADS: +45.0 PSF, -48.0 PSF

Clopay
 Building Products
 Company

8585 DUKE BLVD.
 MASON, OH 45040
 (513) 770-4800

MANUFACTURING PRODUCT CODE:
 MPC: C-DSIE-1F447

DATE: 3-27-92
 DRAWN BY: LEG

WINDLOAD RATING	MANUFACTURED / PURCHASED
W5	MANUFACT.
DESCRIPTION: WIND LOAD 3200, 3220	DRAWING NUMBER: 200040