

MODEL #:

SECTION TYPE:
TONGUE & GROOVE

- 3158 FLUSH
- 3159 MINOR RIBBED

- VINYL TOP SEAL:**
- YES (OPTION)
 - NO

FOAM TAPE THERMAL BREAK

POLYSTYRENE INSULATION
R= 6.5; U=.15

SKIN MATERIAL:

- 24 GA. BLACK EXTERIOR
- 27 GA. ALL OTHER COLORS EXTERIOR
- 29 GA. PRE-PAINTED WHITE INTERIOR

REINFORCING STRUTS:

SEE TABLE #4

- NONE
- 2 1/4" STRUT
- 3" STRUT

AIRCRAFT CABLE:
7:1 SAFETY FACTOR

BOTTOM ASTRAGAL:

- 3 1/2" (STANDARD)
- 7" (OPTIONAL)

END STILES: (PRE-PAINTED)

- 21 GA. SINGLE END STILES (STANDARD ALL WIDTHS)
- 16 GA. DOUBLE END STILES (OPTIONAL)

STEEL BALL BEARING ROLLER:

CENTER HINGE:
14 GA.

BACKUP PLATES:
19 GA. PRIMED

BOTTOM BRACKET:
12 GA. MIN.

TOP BRACKET:
12 GA.

ROLLER HINGE:
14 GA. MIN.

EXTERIOR COLOR:

- SNOWMIST WHITE
- CHOCOLATE BROWN
- BLACK
- TRINAR WHITE
- GRAY
- GLACIER WHITE
- MOCHA BROWN

LOCK:

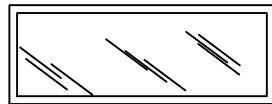
- #2 END STILE
- #7 CYLINDER LOCK - NOT AVAILABLE IN FULL VISION SECTION
- NONE

WINDOW SIZE AVAILABILITY:
SEE TABLE #3

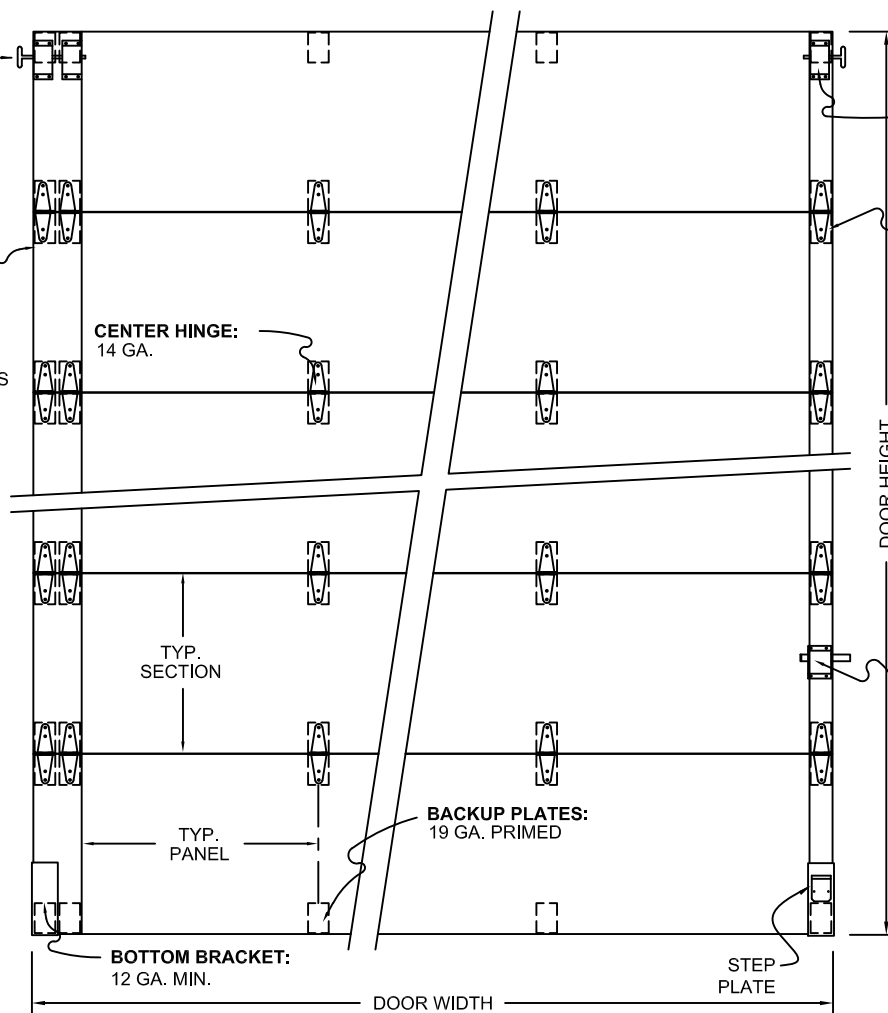
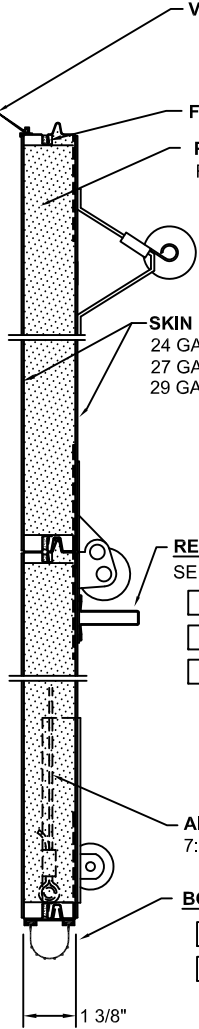
- 19-1/2" X 16" (PLAIN SHORT)
- SQ22
- REC12
- 42" X 16" (PLAIN LONG)
- SQ24
- REC14
- DECORATIVE LEADED WINDOWS

GLAZING OPTIONS:

- SOLID-NO GLAZING
- 1/8" TEMPERED CLEAR
- 1/8" TEMPERED OBSCURE
- 1/8" TEMPERED FROSTED
- 1/8" TEMPERED NARROW REED
- 3/4" INSULATED TEMPERED CLEAR
- 3/4" INSULATED TEMPERED OBSCURE
- 3/4" INSULATED TEMPERED FROSTED
- 3/4" INSULATED TEMPERED NARROW REED



WINDOW FRAME CONSISTS OF AN EXTERIOR FRAME AND AN INTERIOR RETAINER, MADE OF POLYPROPYLENE



1 3/8"



CUST:	MODEL #:	QTY:	# OF SECTIONS HIGH (SEE TABLE #1)	SECTIONS TO GLAZE:	DATE: _____
JOB:	DOOR WIDTH:				BID #: _____
ARCH:	DOOR HEIGHT:		# OF PANELS WIDE (SEE TABLE #2)	PANELS TO GLAZE:	PAGE _____ of _____
CONT:					

MODEL #'S 3158, 3159

**TABLE #1
SECTION CHART**

DOOR HEIGHT	NUMBER OF SECTIONS
6'0"	3
6'3" - 8'0"	4
8'3" - 10'0"	5
10'3" - 12'0"	6
12'3" - 14'0"	7
14'3" - 16'0"	8
16'3" - 18'0"	9

NOTE: DOOR HEIGHT IS AVAILABLE IN 3" INCREMENTS

**TABLE #2
PANEL CHART**

DOOR WIDTH	NUMBER OF PANELS
6'-2" - 7'-6"	3
7'8" - 11'8"	2
11'10" - 14'10"	3
15'0" - 19'0"	4
19'2" - 20'2"	5

NOTE: DOOR WIDTH IS AVAILABLE IN 2" INCREMENTS

**TABLE #3
LITE AVAILABILITY CHART
(LITES PER SECTION)**

	WINDOW SIZE		WINDOW SIZE
DOOR WIDTH	42" X 16"	DOOR WIDTH	19-1/2" X 16"
7'8" - 11'8"	2	6'2" - 7'6"	3
11'10" - 14'10"	3	7'8" - 11'8"	4
15'0" - 19'0"	4	11'10" - 14'10"	5
19'2" - 20'2"	5	15'0" - 19'0"	6
		19'2" - 20'2"	6

**TABLE #4 A
REINFORCEMENT CHART
SOLID AND SINGLE PANE GLASS**

	DOOR HEIGHT			
DOOR WIDTH	UP to 8'	8'3" to 10'0"	10'3" to 14'	14'3" to 16'0"
UP TO 14'2"	NONE	NONE	NONE	NONE
14'4"- 15'2"	3 ea. 2-1/4"	3 ea. 2-1/4"	4 ea. 2-1/4"	5 ea. 2-1/4"
15'4"- 16'2"	3 ea. 2-1/4"	3 ea. 2-1/4"	4 ea. 2-1/4"	5 ea. 2-1/4"
16'4"- 18'2"	3 ea. 3"	3 ea. 3"	4 ea. 3"	5 ea. 3"

**TABLE #4 B
REINFORCEMENT CHART
DOUBLE PANE GLASS**

	DOOR HEIGHT			
DOOR WIDTH	UP to 8'	8'3" to 10'0"	10'3" to 14'	14'3" to 16'0"
UP TO 12'2"	NONE	NONE	NONE	NONE
12'4"- 16'2"	3 ea. 3"	1 - 3" per sec	1 - 3" per sec	1 - 3" per sec
16'4"- 18'2"	1 - 3" per sec	1 - 3" per sec	1 - 3" per sec	1 - 3" per sec