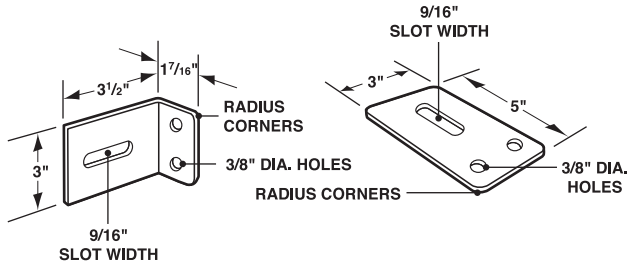
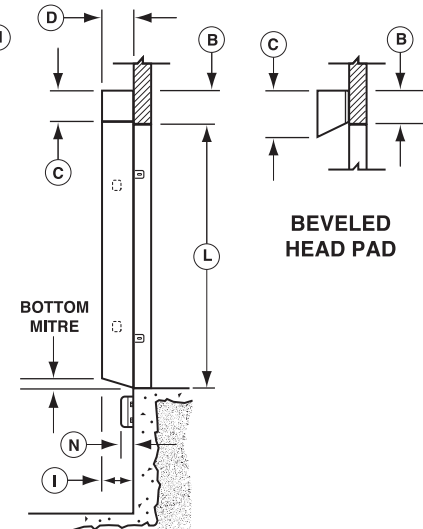
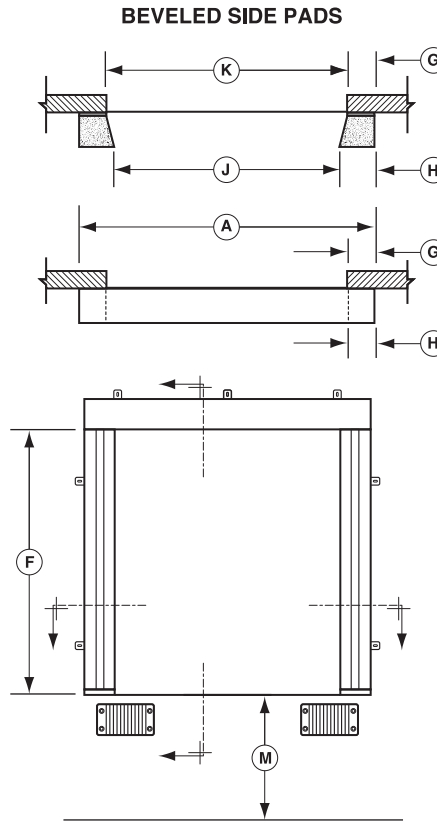
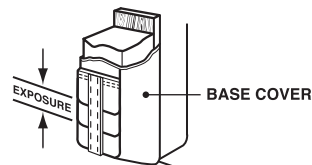
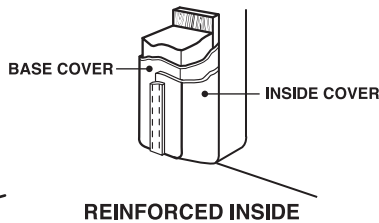
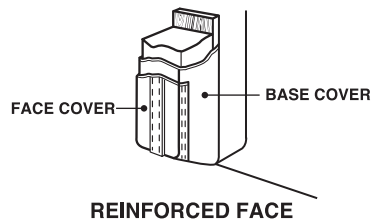
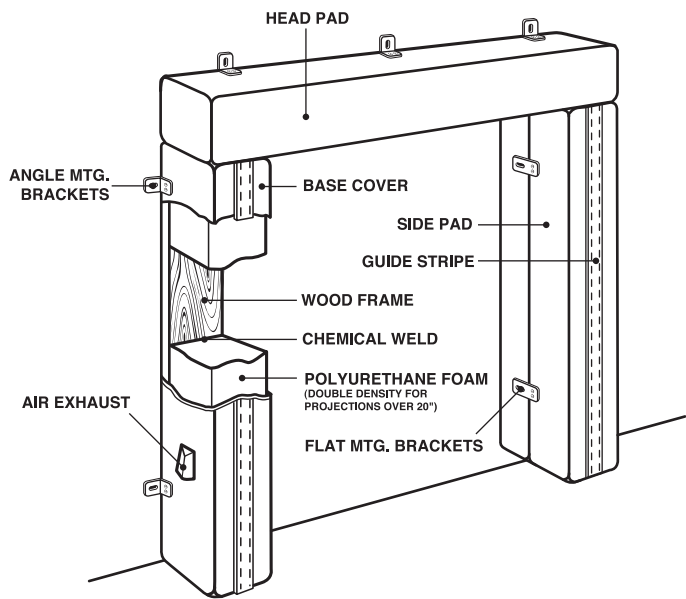
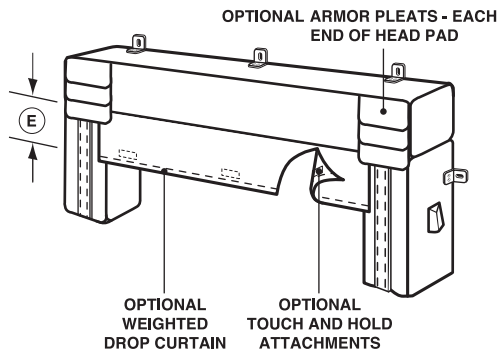


**MODEL DS100 DOCK SEAL**



**ANGLE AND FLAT MOUNTING BRACKETS**



**ARMOR PLEATS**

- 4" EXPOSURE
- 8" EXPOSURE
- 16" EXPOSURE

**HEAD PAD DATA**

- MOUNTING:  OVER SIDE PADS  
 BETWEEN SIDE PADS
- \_\_\_\_ "A" WIDTH AT REAR  
 \_\_\_\_ "B" HEIGHT  
 \_\_\_\_ "C" HEIGHT AT FACE  
 \_\_\_\_ "D" TOTAL PROJECTION  
 \_\_\_\_ BASE FABRIC COLOR
- BLOCKOUT (IF REQUIRED) PROJECTION  
 \_\_\_\_ FABRIC COLOR
- FACE REINFORCEMENT  
 \_\_\_\_ FABRIC COLOR
- UNDERSIDE REINFORCEMENT  
 \_\_\_\_ FABRIC COLOR
- ARMOR ENDS  
 \_\_\_\_ FABRIC COLOR  
 \_\_\_\_ PLEAT EXPOSURE
- FORMED STEEL BACK  
 PAINTED  GALVANIZED

- NON-ROT BACK  
 WEIGHTED DROP CURTAIN  
 \_\_\_\_ "E" HEIGHT  
 \_\_\_\_ FABRIC COLOR
- TOUCH & HOLD ATTACHMENT  
 ROPE/PULLEY SYSTEM

**SIDE PAD DATA**

- \_\_\_\_ "F" LENGTH AT REAR  
 \_\_\_\_ "G" WIDTH AT REAR  
 \_\_\_\_ "H" WIDTH AT FACE  
 \_\_\_\_ "D" TOTAL PROJ. AT TOP  
 \_\_\_\_ "I" TOTAL PROJ. AT BOTTOM  
 \_\_\_\_ "J" SIDE PAD FACE I.D.  
 \_\_\_\_ BASE FABRIC COLOR
- BLOCKOUT (IF REQUIRED) PROJ: \_\_\_\_ TOP \_\_\_\_ BOTTOM  
 \_\_\_\_ FABRIC COLOR
- FACE REINFORCEMENT  
 \_\_\_\_ FABRIC COLOR

- INSIDE EDGE REINFORCEMENT  
 \_\_\_\_ FABRIC COLOR
- ARMOR PLEATS  
 \_\_\_\_ FABRIC COLOR  
 \_\_\_\_ "PLEAT EXPOSURE"
- FORMED STEEL BACK  
 PAINTED  GALVANIZED
- NON-ROT BACK

**GENERAL INFORMATION**

- \_\_\_\_ "K" DOOR WIDTH  
 \_\_\_\_ "L" DOOR HEIGHT  
 \_\_\_\_ "M" DOCK HEIGHT  
 \_\_\_\_ "N" DOCK BUMPER/LEDGE COMBINED PROJECTION

**DRIVE APPROACH:**

- LEVEL  DECLINED  INCLINED

FB- \_\_\_\_ QTY. \_\_\_\_ SHEET \_\_\_\_ OF \_\_\_\_



8585 DUKE BLVD.  
 MASON, OH 45040  
 800-526-4301  
 VISIT US AT WWW.CLOPAYCOMMERCIAL.COM

JOB: \_\_\_\_\_

LOCATION: \_\_\_\_\_

CONTRACTOR: \_\_\_\_\_ ARCHITECT: \_\_\_\_\_

APPROVED BY SIGNATURE: \_\_\_\_\_