

Clopay® BUILDING PRODUCTS A Griffon Company

TECHNICAL BULLETIN

WINDCODE® Drawings for Florida

With the introduction of the Florida Product Approval process in October 2003, Florida created a web site to manage and maintain drawings for all products that meet the state testing and quality standards defined by Rule 9B-72. All Clopay WINDCODE® doors that are offered in Florida have drawings available for downloading and printing from this web site.

In February 2006, Florida updated the website. This Bulletin provides detailed step-by-step instructions on how to navigate the new website to find Clopay WINDCODE® drawings.

The drawings are available in Adobe PDF format. Please make sure that you have the most recent version of the Adobe Acrobat Reader program (currently version 7.0). It can be downloaded for free from <http://www.adobe.com>.

The Florida Department of Community Affairs Building Code Information Systems web site can be found at <http://www.floridabuilding.org>. On the left side of the main page is a "Product Approval" button. You do not need to click this button. Move your mouse over this button to bring up the Product Approval menu.

If you do click on the "Product Approval" button, it will open a new page with the same menu options described in the next step..




Select 'Find a Product or Application' from the menu.

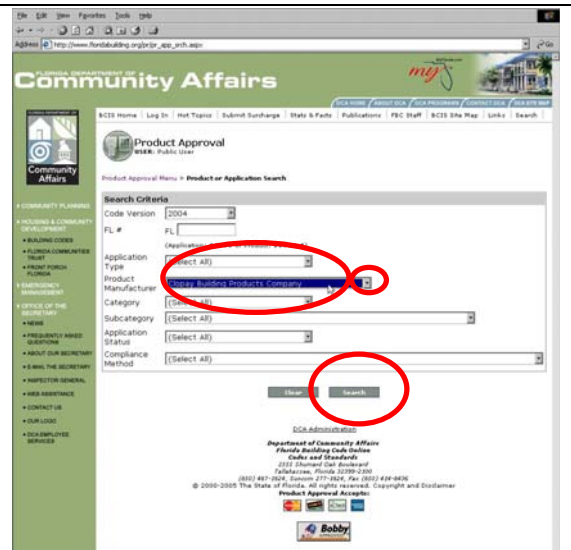
Note that this new website has many new features and options, most of which don't work just yet.




Clipay® BUILDING PRODUCTS
 A Griffon Company
TECHNICAL BULLETIN
WINDCODE® Drawings for Florida

On the search screen, select **Clipay Building Products Company** as the Product Manufacturer by clicking on the gray drop down button  to display the list of Product Manufacturers. Then click on the search button on the bottom right.

Note that the system defaults to search only products complying with the 2004 Florida Building Code, which went into effect on October 1, 2005.



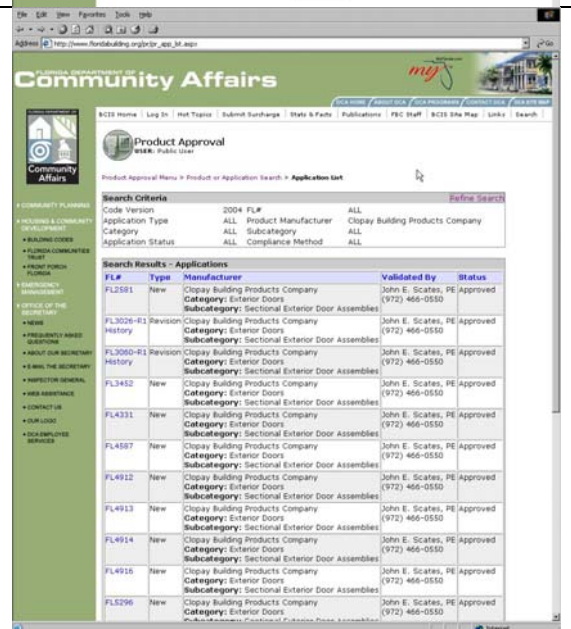
All Clipay product approvals will be listed. Note that the far right column shows the status of the approval.

Currently, most residential doors can be found in the FL5675 Approval and most commercial doors can be found in the FL5678 Approval. High Velocity Hurricane Zone approvals can be found in FL5684.

This website, once it is fully operational, should allow manufacturers to add new products to existing approvals. At that point, CBPC will consolidate all product approvals into three lists (residential, commercial, and HVHZ).

Until then, a list of all current Florida Product Approval numbers for Clipay doors can be found at www.clipaydoor.com

For this example, click on the link for the FL5675 Approval (not shown in the figure – scroll down to find it).



Clopay BUILDING PRODUCTS
 A Griffon Company
TECHNICAL BULLETIN
WINDCODE® Drawings for Florida

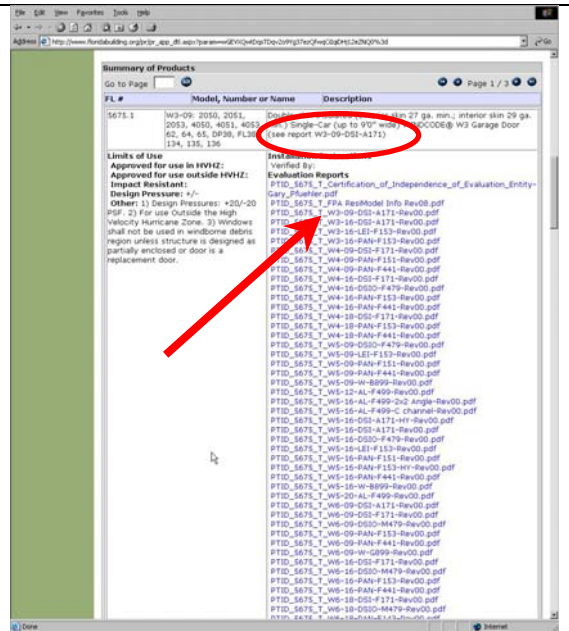
The FL5675 Approval contains the Evaluation Reports for the Models covered by this Approval. The Evaluation Reports contain the approved drawings.

All Product Approvals approved before March, 2006 were imported into the new website. All evaluation reports for imported approvals are related to the first product listed on the approval.

Once the new system is fully updated, the proper evaluation report will be listed next to the appropriate models. Until then, the report is listed in the model description.

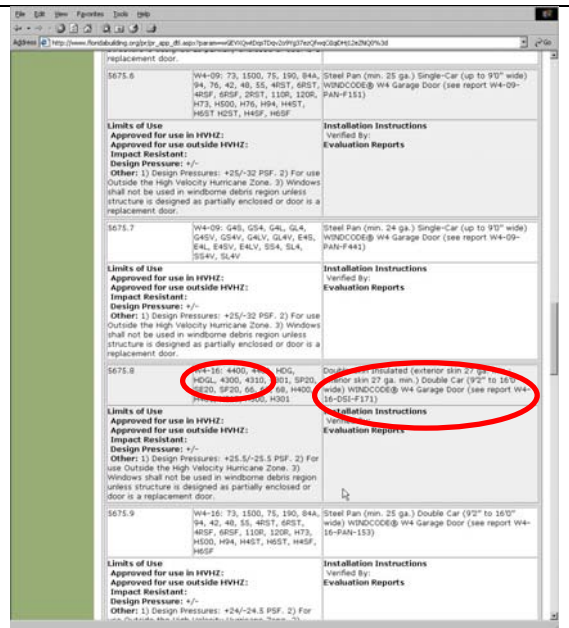
The report title is based on the group name. Following these instructions is a list of what models are included in which groups.

In this example, the W3-09-DSI-A171 report is highlighted.



This screenshot shows some of the other line items on FL5675.

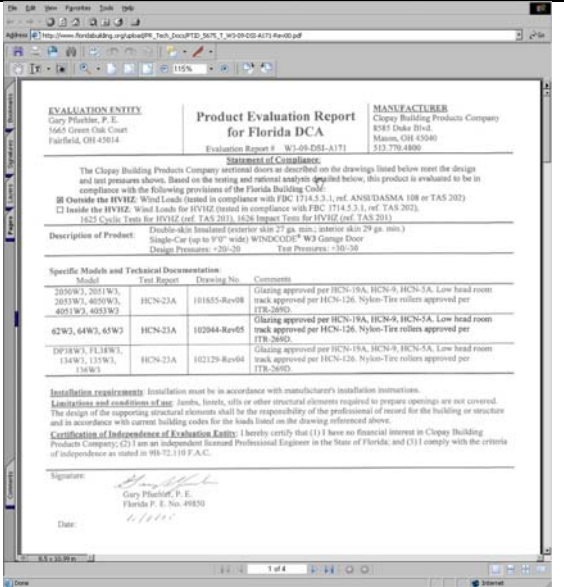
Note that because all the evaluation reports are associated with the first item, you may not be able to see them. But if you are looking for the approval drawing for a double-car 4300W4, line item 5675.8 leads you to report W4-16-DSI-F171.



Clopay® BUILDING PRODUCTS
 A Griffon Company

TECHNICAL BULLETIN
WINDCODE® Drawings for Florida

The W3-09-DSI-A171 report will open in a new window. The specific models covered by this report are listed in the first column and the drawing for those models is listed in the third column. The drawings are on the following pages of the report. In this case, the report is four pages long – one cover page and three drawings.



In general, **Residential Models W3 thru W6** can be found in **FL5675**.

In general, **Commercial Models W3 thru W6** can be found in **FL5678**.

Residential and Commercial Models W7 thru W9 can be found in **FL5684**

Exceptions can be found in FL6218.

TECHNICAL BULLETIN

WINDCODE® Drawings for Florida

Residential Models W3 and higher

| Door Type | Group Name | Clopay | Home Depot | Holmes | Ideal | Other | Extended Height |
|---|------------|------------------------------|----------------------|----------------------|--------------------------------|------------|--|
| Pan | PAN-F151 | 73, 76, 93, 94, 1500* | 75, 84A | 42, 48 | 4RST, 6RST, 4RSF*, 6RSF*, 2RST | 110R, 120R | H73, H76, H94, H500*, H4ST, H6ST, H4SF*, H6SF*, H2ST |
| Insulated Pan | LEI-F153 | 1000, 1001 | 183, 187 | 52 | P2GF | | |
| Pan Carriage House | PAN-F441 | G4S, G4SV, G4L, G4LV | GS4, GS4V, GL4, GL4V | SS4, SS4V, SL4, SL4V | E4S, E4SV, E4L, E4LV | | |
| 1-3/8" double-skin-insulated | DSI-A171 | 4050, 4051, 4053 | 2050, 2051 | 62, 64, 65 | DP38, FL38 | | |
| 1-3/8" double-skin-insulated with overlay | DSIO-F479 | Cnn, CDnn | CFnn | SFnn | ADnn | | HCnn |
| 2" double-skin-insulated with overlay | DSIO-M479 | CPnn, CGnn | CXnn | SXnn | AGnn | | HPnn |
| 2" double-skin-insulated | DSI-F171 | 4300, 4310, 4301, 4400, 4401 | HDG, HDGL | 66, 67, 68 | | | H400, H401, H300, H310, H301 |
| Aluminum | AL-F499 | Avante | | | | | |
| Wood | W-B899 | RHnn, RRnn, RCnn | | | | | |

* Note that these Pan Door models have stuffed-in EPS insulation.

Commercial Models W3 and higher

| Door Type | Group Name | Clopay | Home Depot | Holmes | Ideal |
|----------------------------|------------|----------------------------|------------|-----------|------------------------------|
| Ribbed Insulated EPS | C-DSI-F448 | 3200, 3220 | 240 | | |
| Panel Insulated EPS | C-DSI-F173 | 3203 | 250 | | |
| Insulated Urethane | C-DSI-D468 | 3602, 3603, 3622 | | | C6X17, C0X17, C6X20 |
| Ribbed Pan & Pan Insulated | C-PAN-F448 | 524, 524V, 524S, 520, 520S | | 224, 224S | C4ST, C4SV, C4SS, C0ST, C0SS |
| Panel Pan | C-PAN-F141 | 692 | | | |
| Aluminum | C-AL-F499 | 902 | | | C2AL |



TECHNICAL BULLETIN
WINDCODE® Drawings for Florida

As a final note: the Florida Building Commission has issued a Declaratory Statement that affirms that local jurisdictions cannot require signed and sealed drawings for products with State approval that are to be used in a manner consistent with the limitations of use identified in the approval file. The Declaratory Statement can be downloaded from

http://www.floridabuilding.org/upload/CodeID_1812_DEC03-296.pdf