

# LOW-HEADROOM FRONT MOUNT TRACK

## HEADROOM REQUIREMENTS:

- 2" TRACK: 10"
- 3" TRACK: 13"
- 4" ADDITIONAL HEADROOM REQUIRED FOR TROLLEY OPERATOR

- INTERMEDIATE HORIZONTAL TRACK SUPPORT: (BY INSTALLER)
- NO (DOORS TO 120" HIGH)
  - YES (DOORS FROM 123" HIGH)

STARTER ANGLE:  
12 GA.

REAR HANGER:  
(SUPPLIED BY INSTALLER)

TROLLEY OPERATOR:

- YES
- NO
- BY OTHERS

REINFORCING KIT ATTACHES TO DOOR

- YES
- NO
- BY OTHERS

SPRING BUMPER:

- YES (OPTIONAL)
- NO

HORIZONTAL TRACK:

- 2" 16 GA. UPPER  
14 GA. MINI LOWER
- 3" 12 GA. UPPER  
12 GA. LOWER

RADIUS:

- 12" R. UPPER
- 15" R. LOWER

BACK ROOM  
DOOR HEIGHT + 23" (2" TRACK)  
DOOR HEIGHT + 25" (3" TRACK)

OPERATOR BACKROOM  
DOOR HEIGHT + 4'-0"

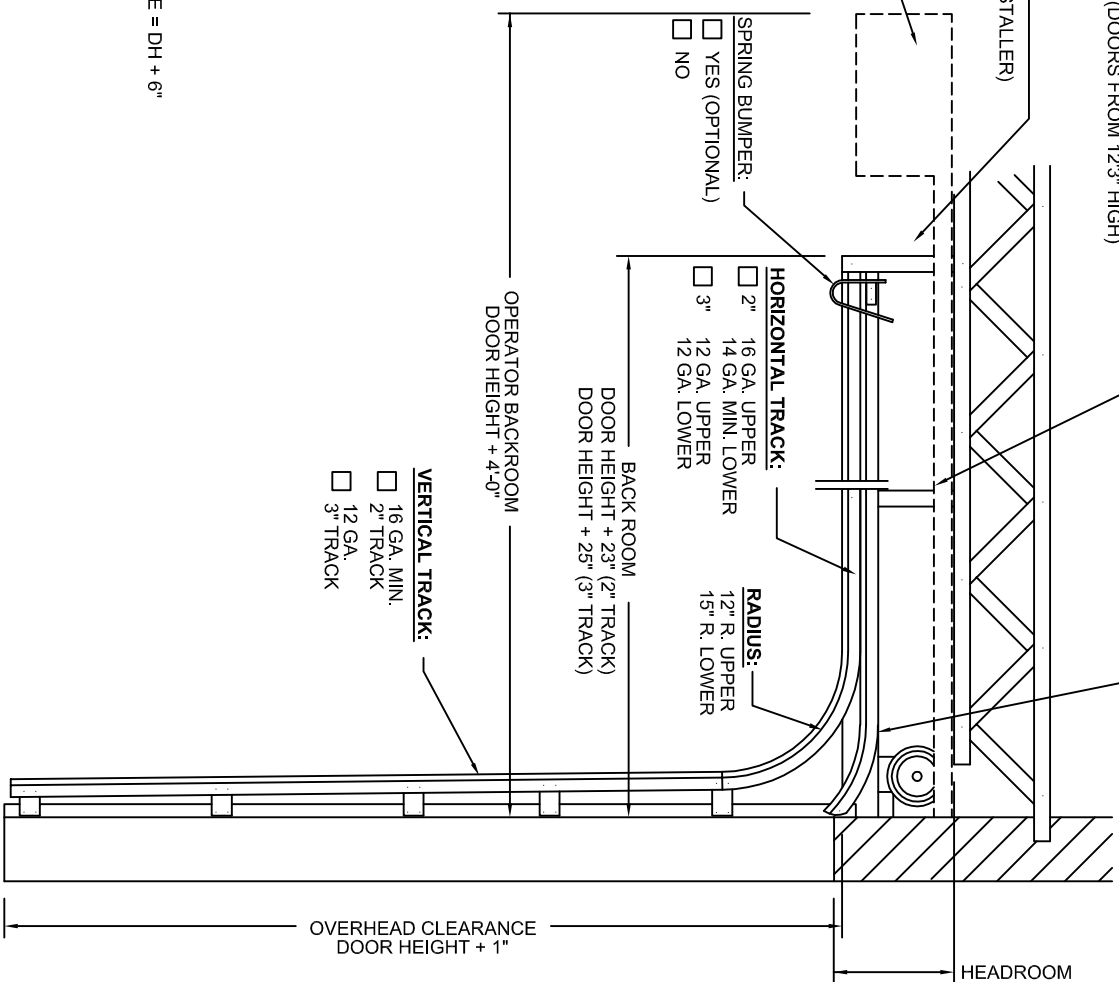
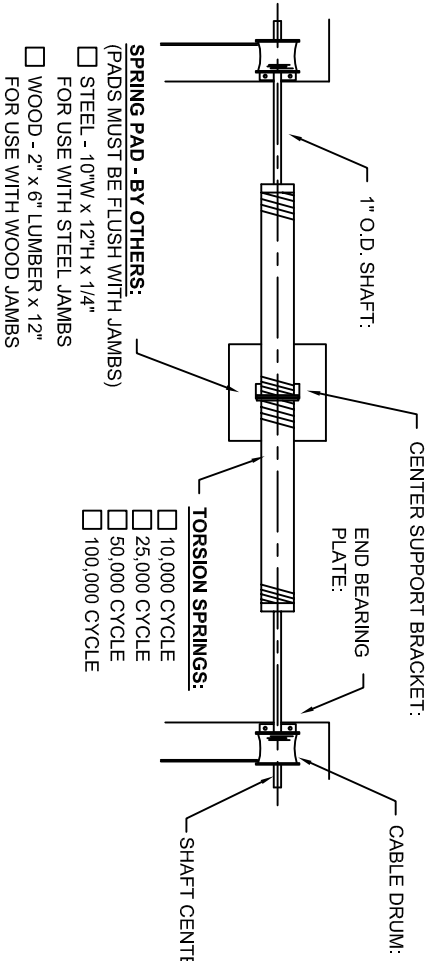
VERTICAL TRACK:

- 16 GA. MIN.
- 2" TRACK
- 12 GA.
- 3" TRACK

OVERHEAD CLEARANCE  
DOOR HEIGHT + 1'

HEADROOM

NOTE:  
SPRING SIZE AND CONFIGURATION INDIVIDUALLY CALCULATED TO COUNTERBALANCE DOOR LOAD. AN EXACT SPRING LAYOUT CAN BE FURNISHED UPON APPROVAL OF BID. SOME DOORS MAY REQUIRE 6" SPRINGS OR DOUBLE SHAFTS.



CUST: _____	LOW-HEADROOM FRONT MOUNT	TRACK SIZE: _____	OPERATOR MODEL #: _____	OVERHEAD CLEARANCE: _____	SHEET '1-2'
JOB: _____	OPENING SIZE: _____" W x _____" H	DOOR SIZE: _____" W x _____" H	OPERATOR BACKROOM: _____	AVAILABLE HEADROOM: _____	
ARCH: _____			BACK ROOM: _____	HEADROOM REQUIREMENT: _____	DATE: _____
CONT: _____					BID #: _____
					PAGE _____ of _____