

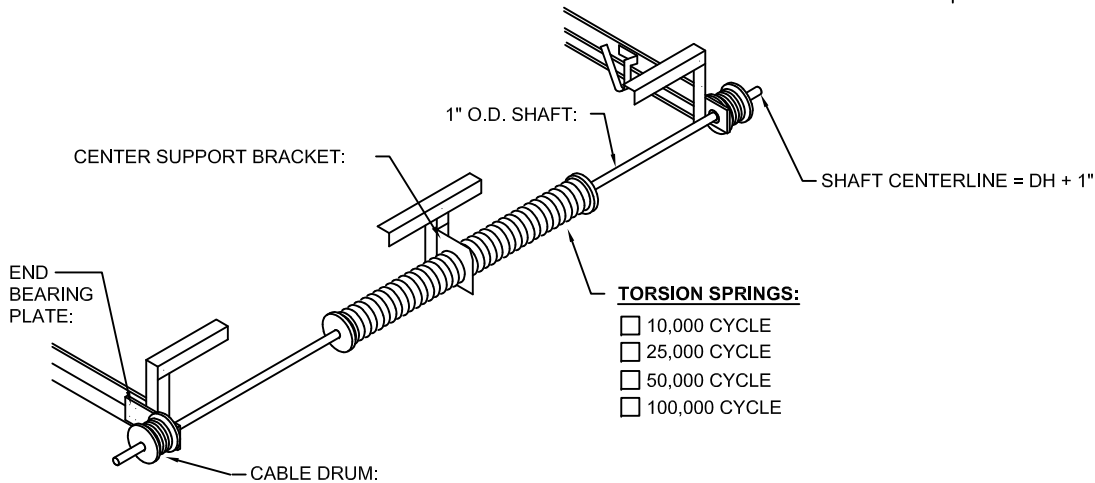
LOW-HEADROOM REAR MOUNT TRACK

HEADROOM REQUIREMENTS

- 2" TRACK: 6 1/2"
- 3" TRACK: 10"
- 4" ADDITIONAL HEADROOM FOR TROLLEY OPERATOR

NOTE:

SPRING SIZE AND CONFIGURATION INDIVIDUALLY CALCULATED TO COUNTERBALANCE DOOR LOAD. AN EXACT SPRING LAYOUT CAN BE FURNISHED UPON APPROVAL OF BID. SOME DOORS MAY REQUIRE 6" SPRINGS.



INTERMEDIATE HORIZONTAL TRACK SUPPORT: (BY INSTALLER)

- NO (DOORS THRU 12'0" HIGH)
- YES (DOORS OVER 12'0" HIGH)

REAR HANGER: (SUPPLIED BY INSTALLER)

STARTER ANGLE: 12 GA.

TROLLEY OPERATOR:

- YES
- NO
- BY OTHERS

REINFORCING KIT: ATTACHED TO DOOR

- YES
- NO
- BY OTHERS

SPRING BUMPER:

- YES (OPTIONAL)
- NO

HORIZONTAL TRACK:

- 2" 16 GA. UPPER
14 GA. MIN. LOWER
- 3" 12 GA. UPPER
12 GA. LOWER

RADIUS:

- 12" R. UPPER
- 15" R. LOWER

BACK ROOM

- DOOR HEIGHT + 30" (2" TRACK)
- DOOR HEIGHT + 32" (3" TRACK)

OPERATOR BACKROOM

DOOR HEIGHT + 5'-0"

VERTICAL TRACK:

- 16 GA. MIN. 2" TRACK
- 12 GA. 3" TRACK

OVERHEAD CLEARANCE
DOOR HEIGHT + 1"

HEADROOM



CUST: _____
 JOB: _____
 ARCH: _____
 CONT: _____

LOW-HEADROOM REAR MOUNT TRACK SIZE:
 OPENING SIZE: _____' _____" W x _____' _____" H
 DOOR SIZE: _____' _____" W x _____' _____" H

OPERATOR MODEL #: _____
 OPERATOR BACKROOM: _____
 BACK ROOM: _____

OVERHEAD CLEARANCE: _____
 AVAILABLE HEADROOM: _____
 HEADROOM REQUIREMENT: _____

SHEET 'T-3'
 DATE: _____
 BID #: _____
 PAGE _____ of _____